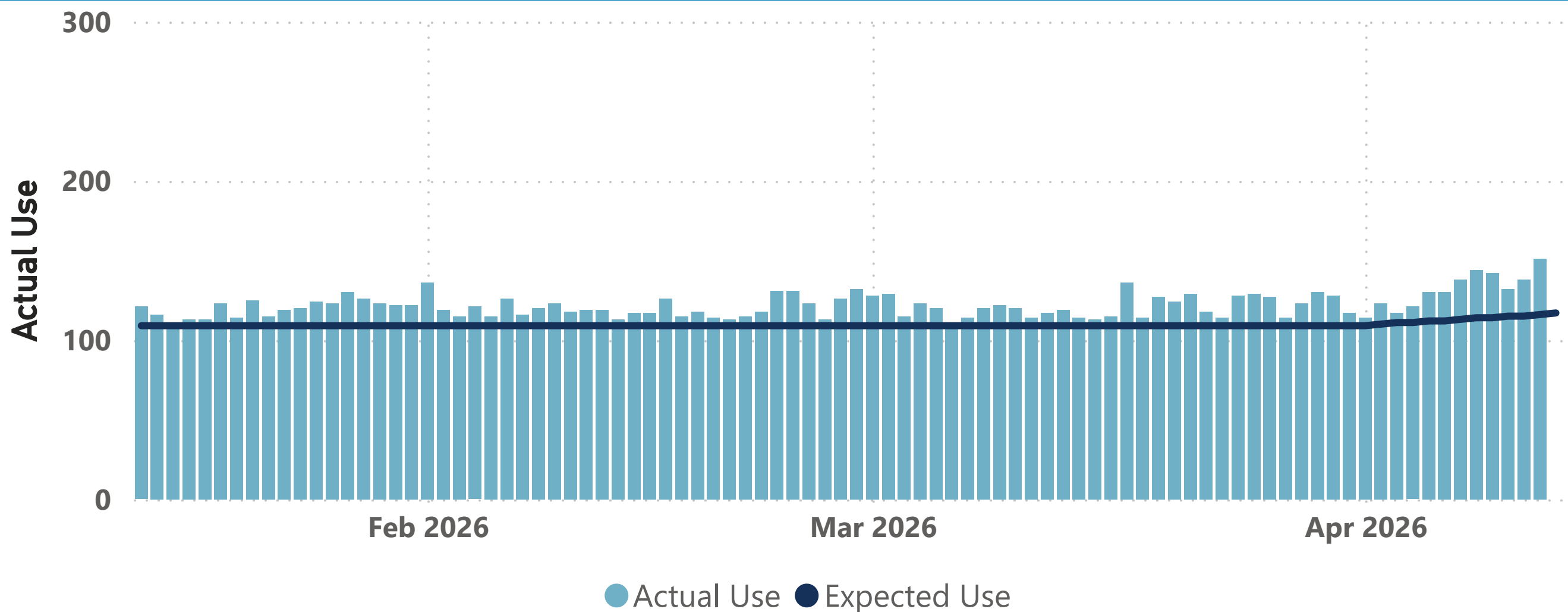


Supply Reservoir Contents

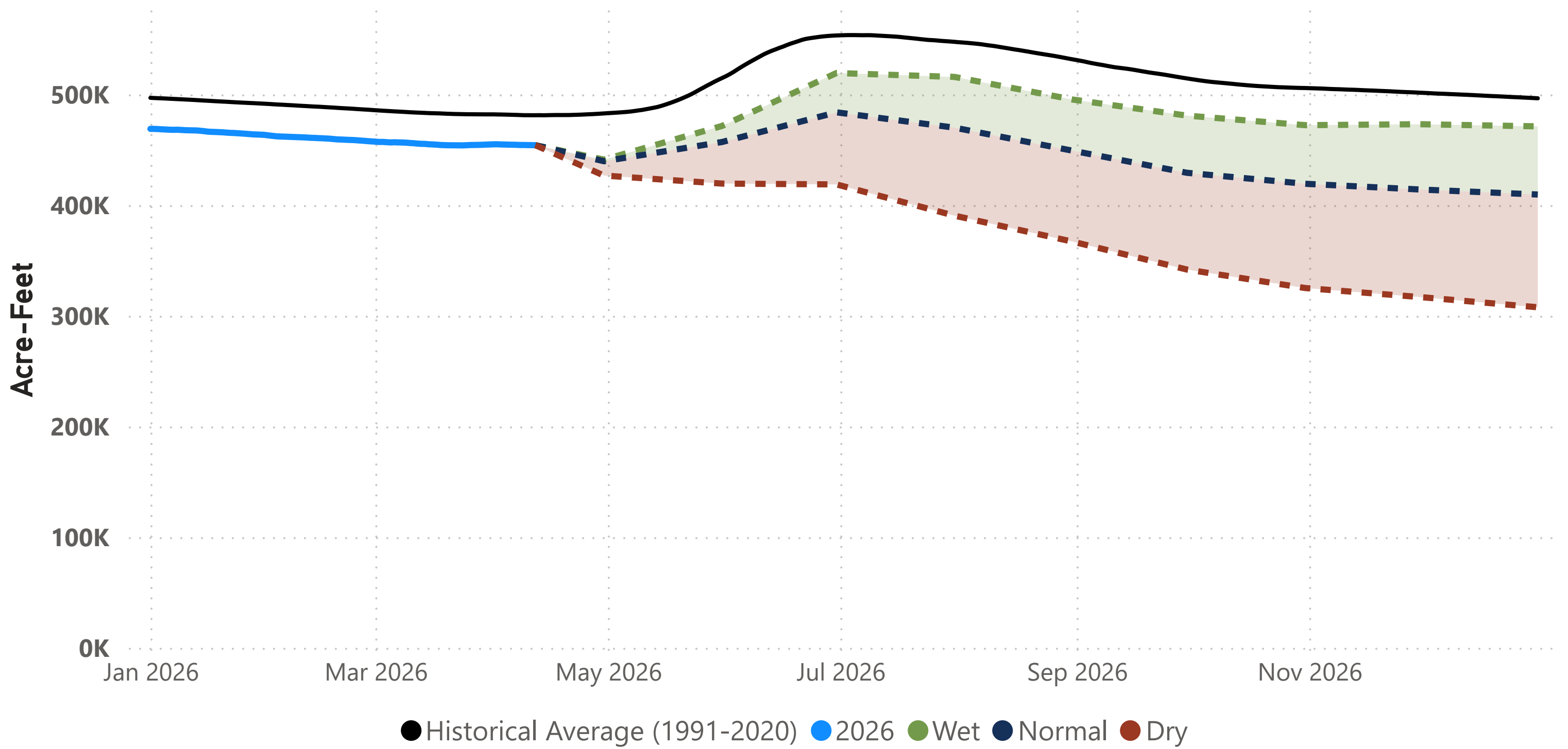
Reservoir	Current Contents	Last Year Contents	Reservoir Capacity	Current % Full	Last Year % Full	Hist Avg % Full
Antero	17,898	18,964	20,122	88	94	78
Chatfield	27,354	28,550	30,342	90	94	87
Cheesman	62,108	70,026	79,064	78	89	84
Dillon	197,802	207,272	257,304	76	81	85
Eleven Mile	99,555	99,521	97,779	101	102	102
Gross*	18,651	15,902	41,811	44	38	56
Marston	15,387	15,437	19,108	80	81	73
Meadow Creek	588	608	5,370	10	11	34
Ralston	7,571	8,108	10,776	70	75	72
Strontia Springs	7,153	6,856	7,863	90	87	89
TOTAL	454,067	471,244	569,539	80	83	84

Note: *Gross Reservoir storage is limited to 29,938 acre feet in total storage during construction activities.

Daily Use – Actual vs. Expected

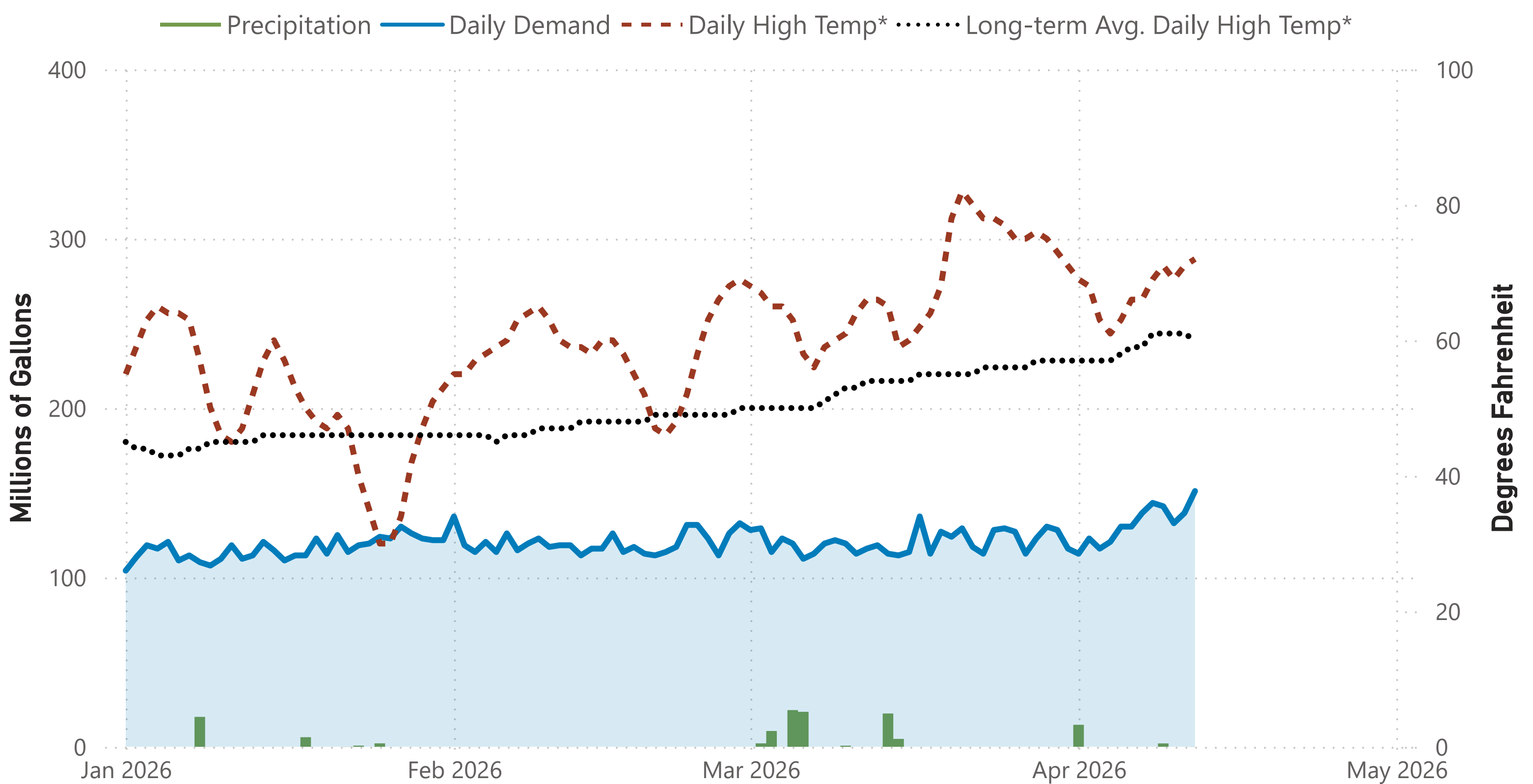


Total Supply Reservoir Contents and Forecasts



Notes: 1) Total system supply reservoir contents are shown in acre-feet (AF). 2) The solid blue line represents actual 2026 storage to date. 3) The dotted lines represent the **most probable forecast, wet conditions, and dry conditions** based on current conditions.

2026 Water Use and Weather Conditions



2026 Denver Water Daily Use Heatmap

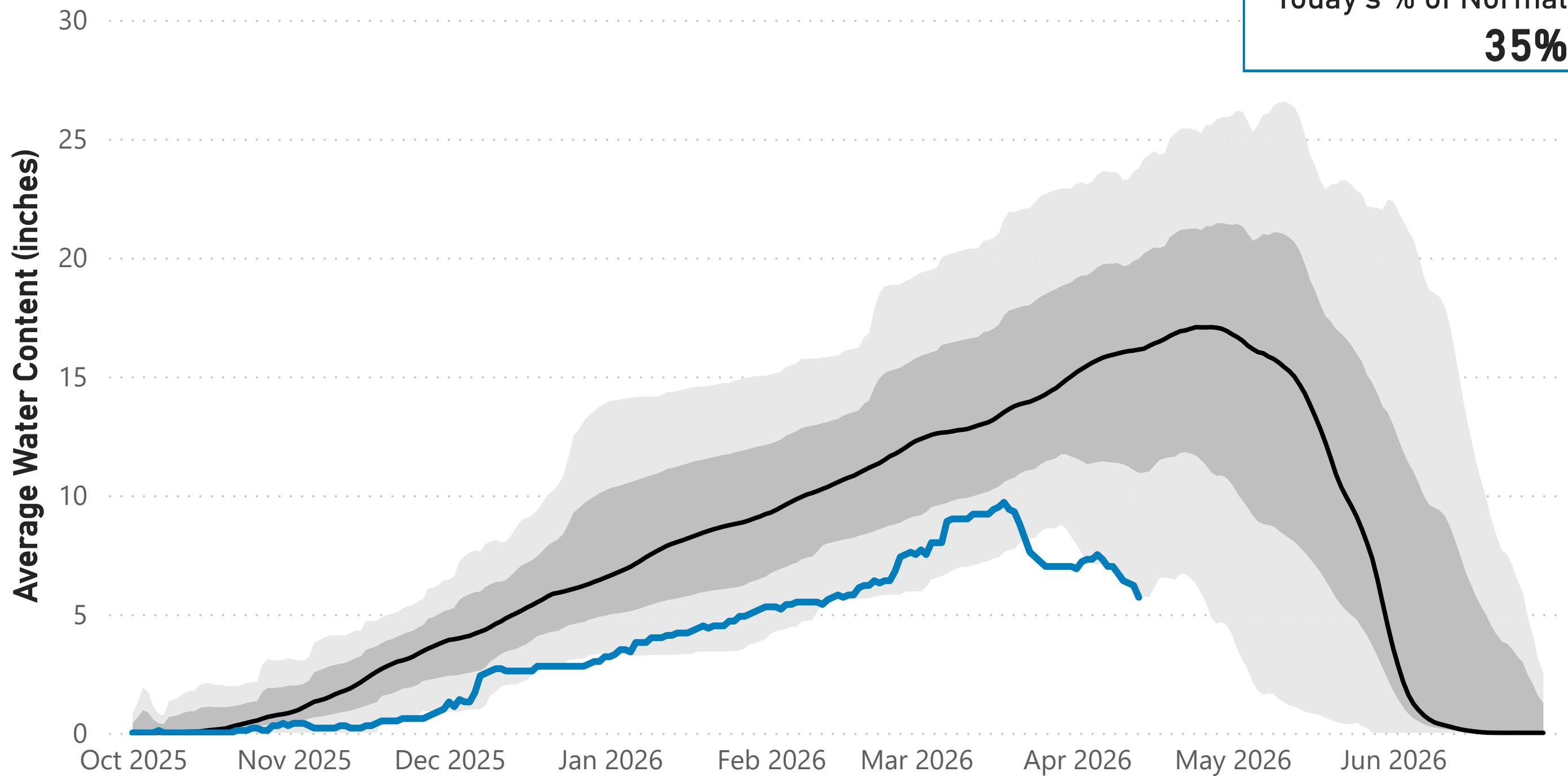
Day of Month	Jan	Feb	Mar	Apr	May	Jun	Jul	Aug	Sep	Oct	Nov	Dec	
1	104	136	128	114									
2	112	119	129	123									
3	119	115	115	117									
4	117	121	123	121									
5	121	115	120	130									
6	110	126	111	130									
7	113	116	114	138									
8	109	120	120	144									
9	107	123	122	142									
10	111	118	120	132									
11	119	119	114	138									
12	111	119	117	151									
13	113	113	119										
14	121	117	114										
15	116	117	113										
16	110	126	115										
17	113	115	136										
18	113	118	114										
19	123	114	127										
20	114	113	124										
21	125	115	129										
22	115	118	118										
23	119	131	114										
24	120	131	128										
25	124	123	129										
26	123	113	127										
27	130	126	114										
28	126	132	123										
29	123		130										
30	122		128										
31	122		117										
													YTD-Avg
Monthly Average	117	120	121	132									121
Expected Daily Use	109	109	109	120	175	261	300	288	263	170	114	107	110
% of Expected Daily Use	107	110	111	110									110

Notes: 1) Values are in million gallons (MG). 2) Expected Daily Use is based on historical use with normal weather conditions. 3) Cell colors represent deviations from **daily** expected use: **white** = expected, **red** = above expected, **blue** = below expected. 4) Values are daily totals by calendar day and month 2026.

Snowpack: Colorado River Watershed

● Median (1991-2020) ● Historical Range (1980-2025) ● 2025-2026

Today's % of Normal
35%

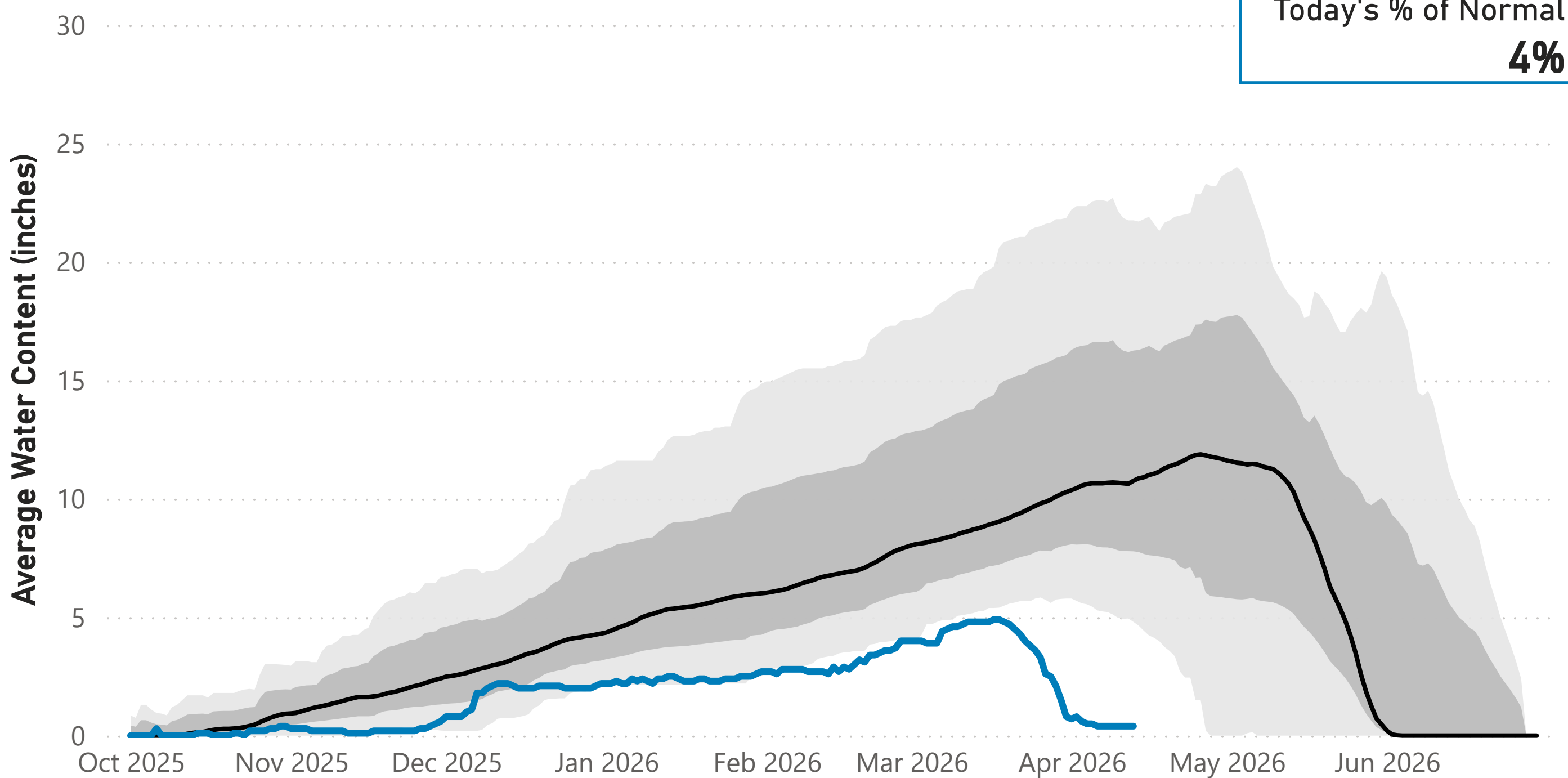


Data are from the 9 SNOTEL stations above Denver Water's Upper Colorado River diversion facilities.

Snowpack: South Platte River Watershed

● Median (1991-2020) ● Historical Range (1980-2025) ● 2025-2026

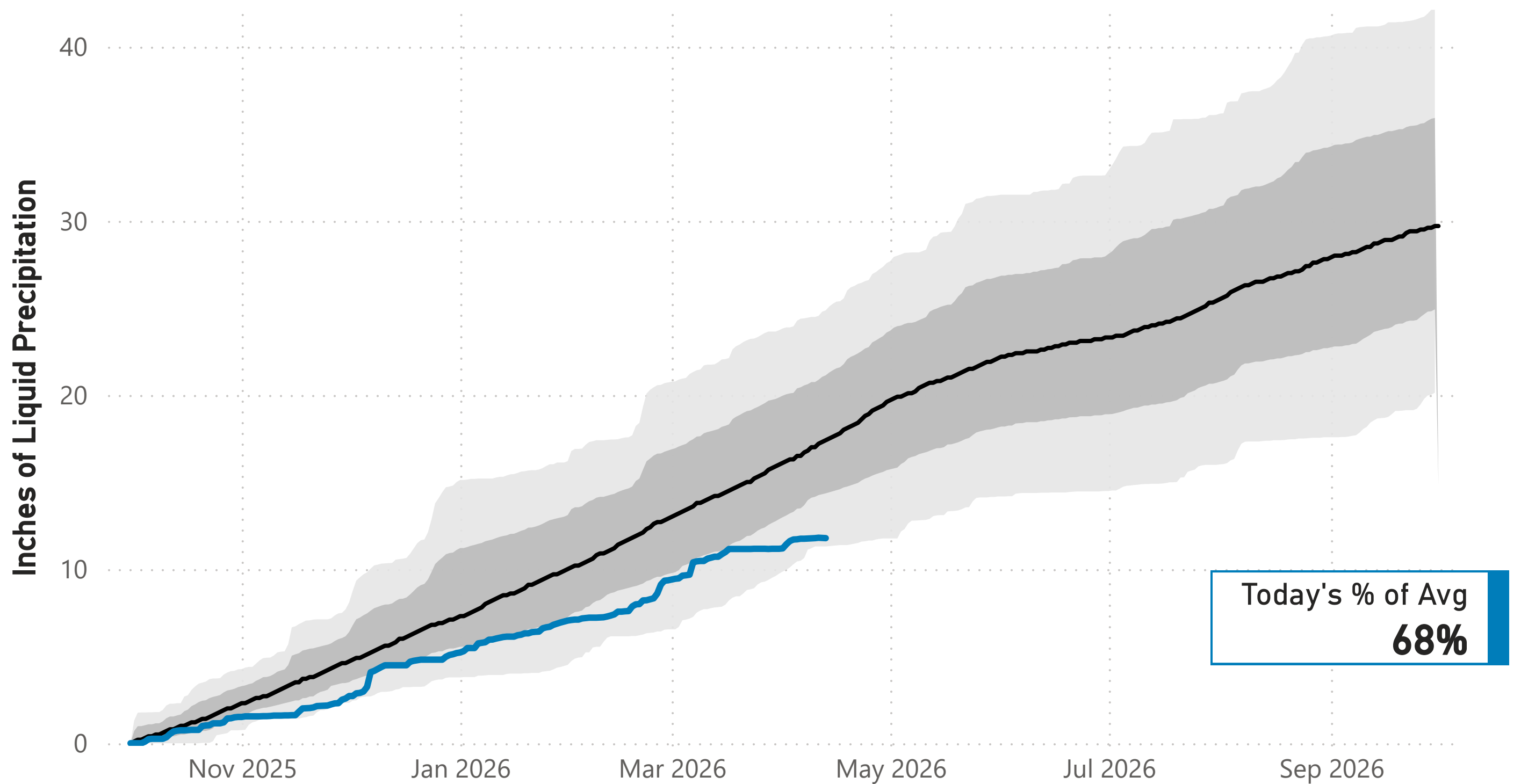
Today's % of Normal
4%



Data are from the 7 SNOTEL stations above Denver Water's Upper South Platte diversion facilities.

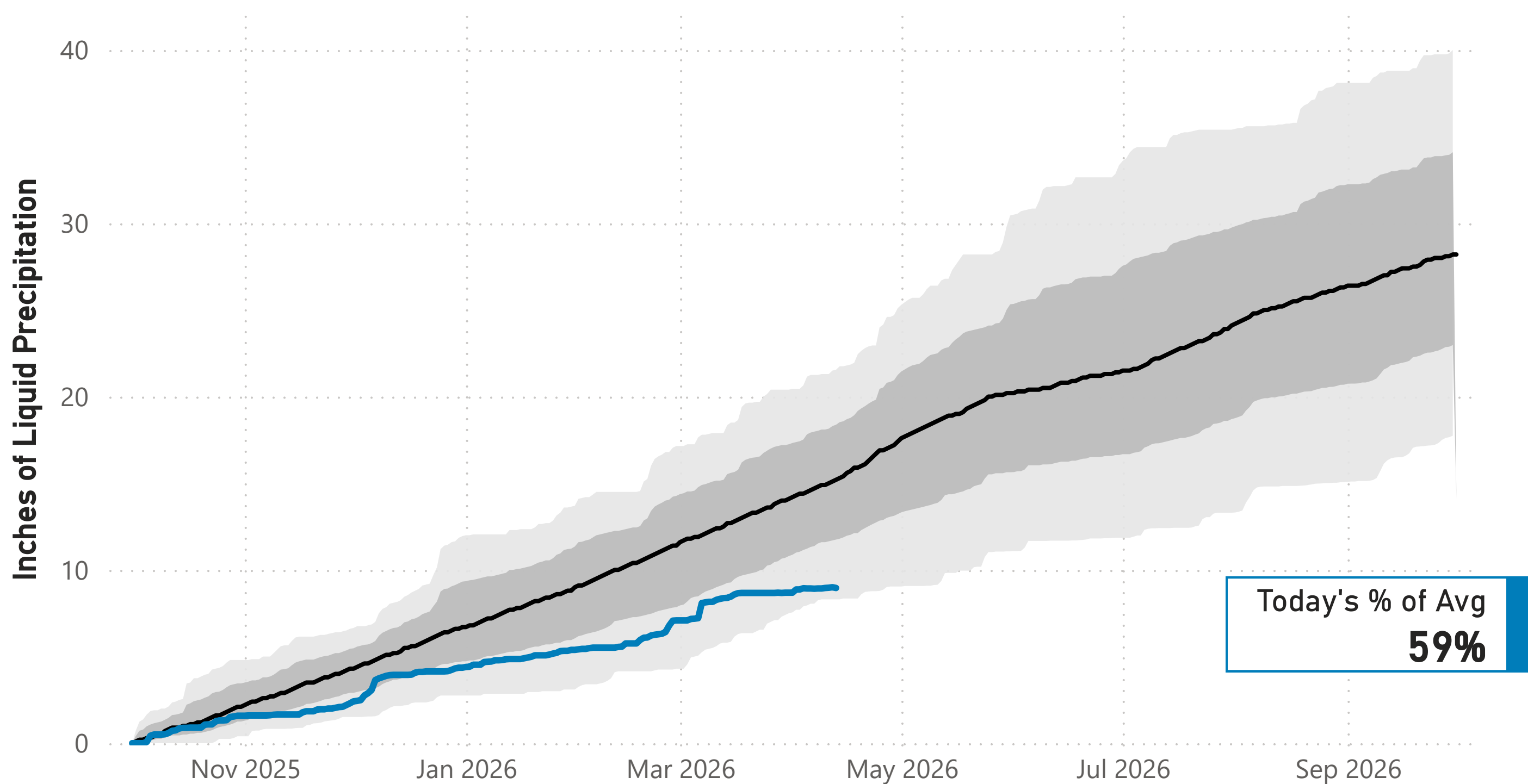
Cumulative Precipitation: Colorado River Watershed

● Average (1991-2020) ● Historical Range (1980-2025) ● 2025-2026



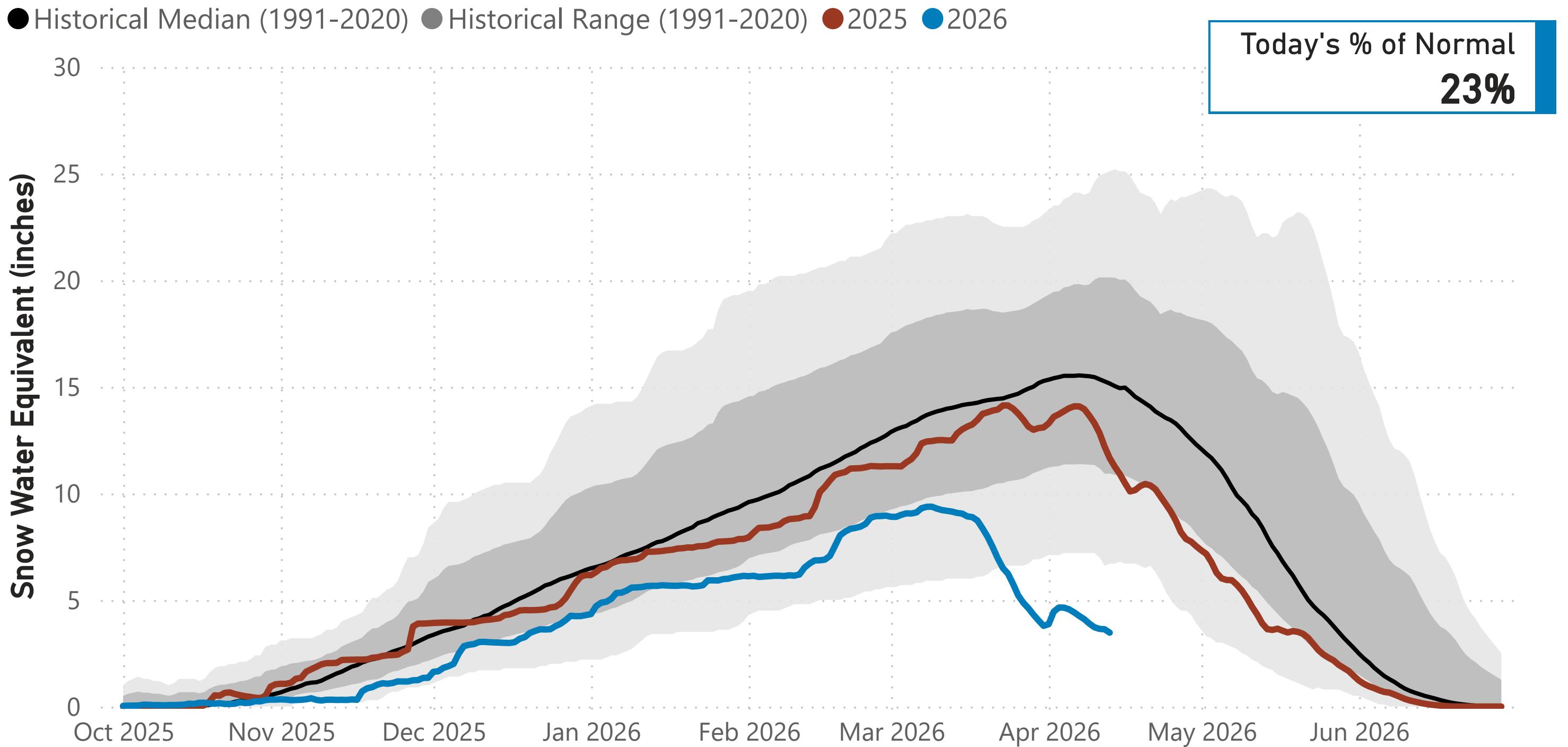
Cumulative Precipitation: South Platte Watershed

● Average (1991-2020) ● Historical Range (1980-2025) ● 2025-2026



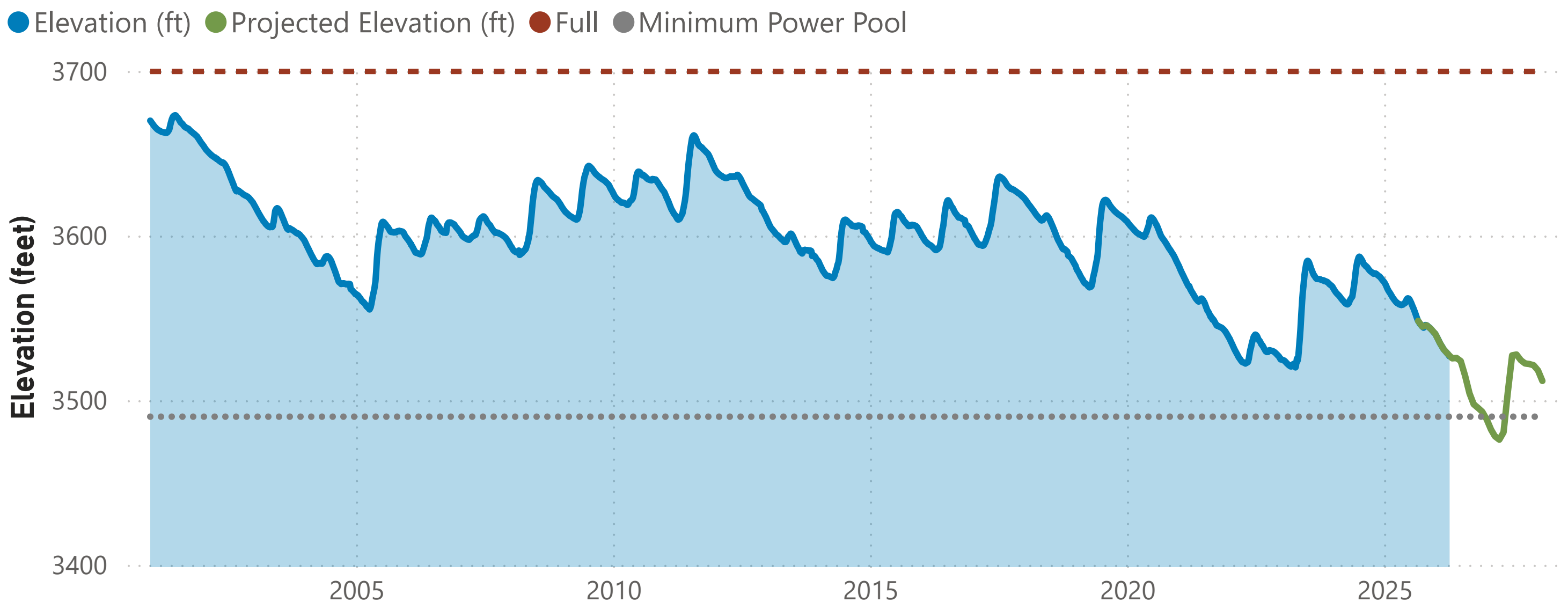
Lake Powell Report*

Colorado River Above Lake Powell Snowpack



Data are from the 104 SNOTEL stations above Lake Powell.

Lake Powell Elevation (2001-Current)



The historical and current Lake Powell elevation data come from the U.S. Bureau of Reclamation website. The projected elevation data are based on the 24-Month Study from the Bureau's Operating Plan for Colorado River System Reservoirs.

Note: * Denver Water gets half of its water supply from the Colorado River and closely monitors conditions at Lake Powell and within the greater Colorado River Basin.