



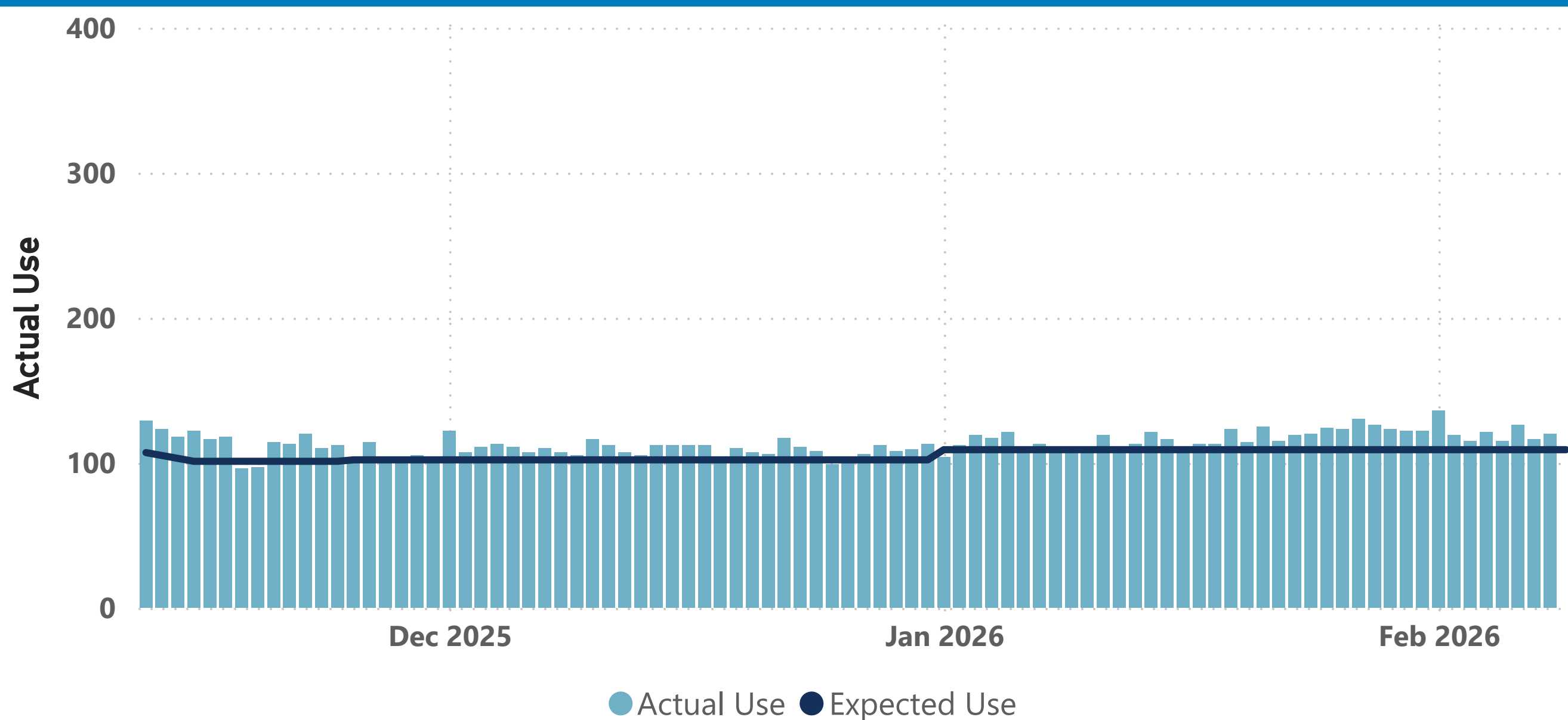
DENVER WATER

Supply Reservoir Contents

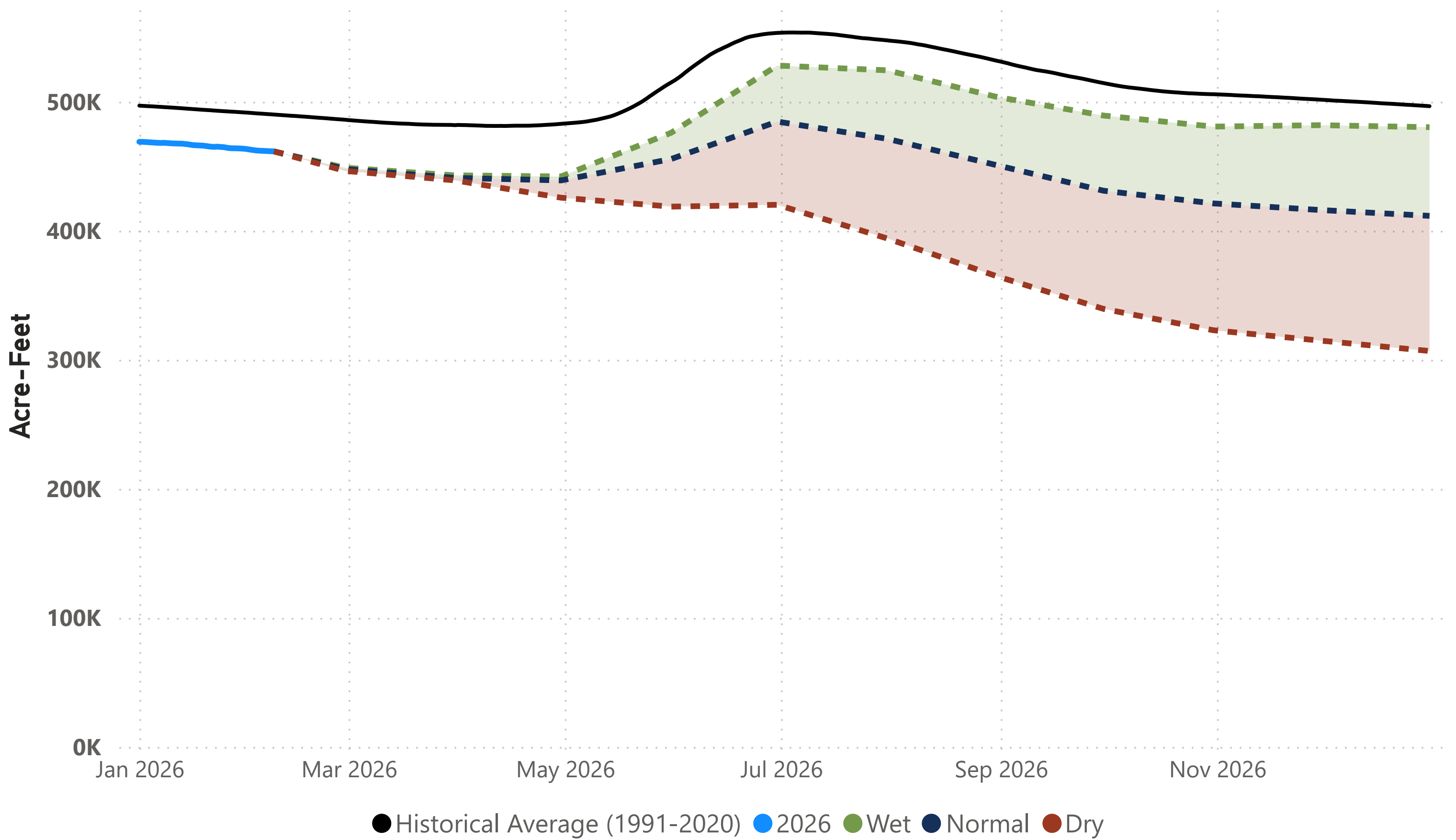
Reservoir	Current Contents	Last Year Contents	Reservoir Capacity	Current % Full	Last Year % Full	Hist Avg % Full
Antero	18,293	18,753	20,122	90	93	78
Chatfield	27,979	27,128	30,342	92	89	85
Cheesman	65,807	73,601	79,064	83	93	81
Dillon	198,473	206,418	257,304	77	80	88
Eleven Mile	99,521	99,795	97,779	101	102	102
Gross*	20,755	19,666	41,811	49	47	67
Marston	15,368	17,634	19,108	80	92	68
Meadow Creek	282	608	5,370	5	11	34
Ralston	7,772	7,295	10,776	72	68	71
Strontia Springs	7,153	7,017	7,863	90	89	91
TOTAL	461,402	477,915	569,539	81	84	86

Note: *Gross Reservoir storage is limited to 29,938 acre feet in total storage during construction activities.

Daily Use – Actual vs. Expected



Total Supply Reservoir Contents and Forecasts



Notes: 1) Total system supply reservoir contents are shown in acre-feet (AF). 2) The solid blue line represents actual 2025 storage to date. 3) The dotted lines represent the **most probable forecast, wet conditions, and dry conditions** based on current conditions.

2026 Denver Water Daily Use Heatmap

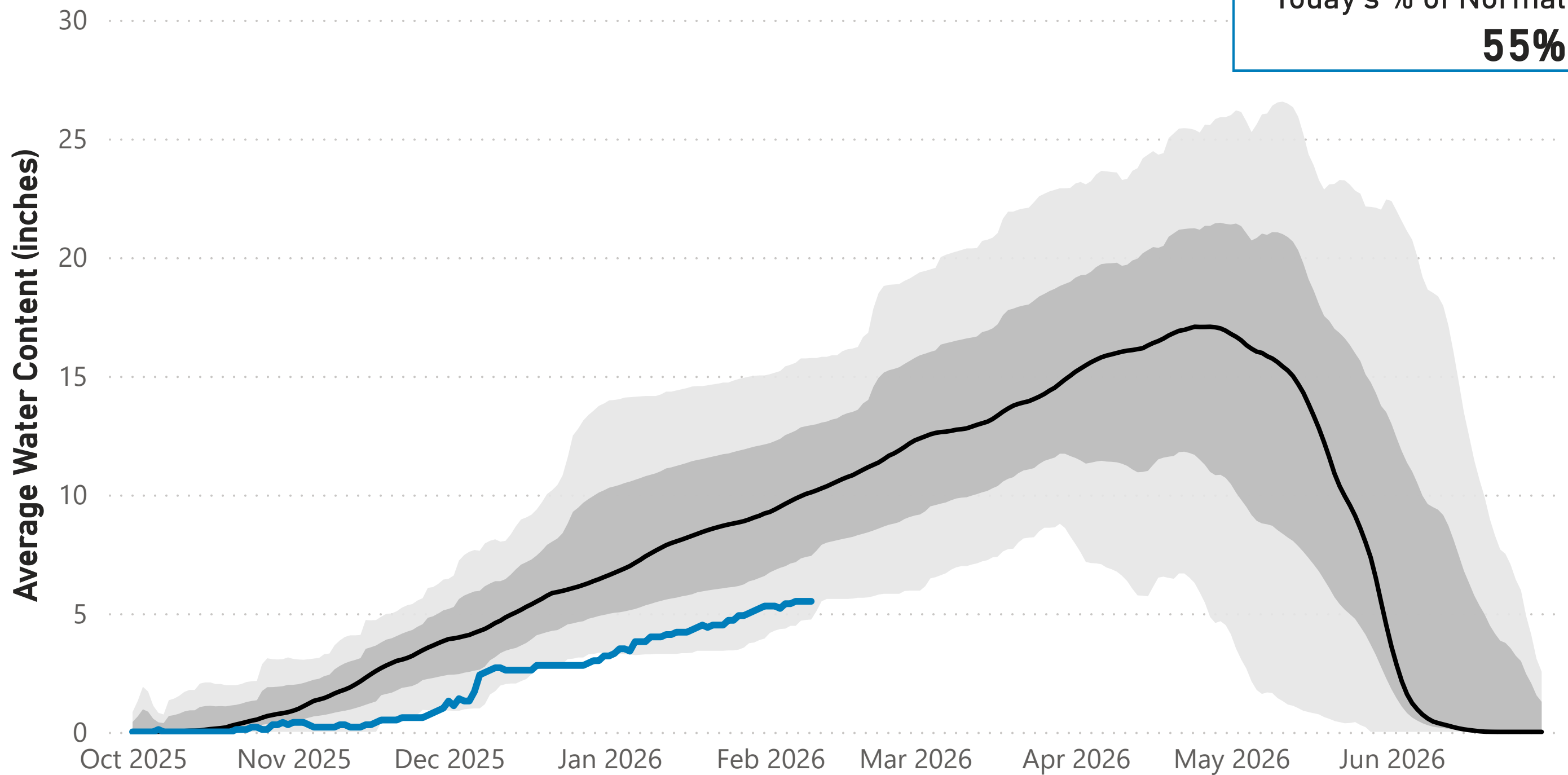
Day of Month	Jan	Feb	Mar	Apr	May	Jun	Jul	Aug	Sep	Oct	Nov	Dec	
1	104	136											
2	112	119											
3	119	115											
4	117	121											
5	121	115											
6	110	126											
7	113	116											
8	109	120											
9	107												
10	111												
11	119												
12	111												
13	113												
14	121												
15	116												
16	110												
17	113												
18	113												
19	123												
20	114												
21	125												
22	115												
23	119												
24	120												
25	124												
26	123												
27	130												
28	126												
29	123												
30	122												
31	122												
													YTD-Avg
% of Expected Daily Use	107	111											108
Expected Daily Use	109	109	109	120	175	261	300	288	263	170	114	107	109
Monthly Average	117	121											118

Notes: 1) Values are in million gallons (MG). 2) Expected Daily Use is based on historical use with normal weather conditions. 3) Cell colors represent deviations from **daily** expected use: **white** = expected, **red** = above expected, **blue** = below expected. 4) Values are daily totals by calendar day and month 2026.

Snowpack: Colorado River Watershed

● Median (1991-2020) ● Historical Range (1991-2020) ● 2025-2026

Today's % of Normal
55%

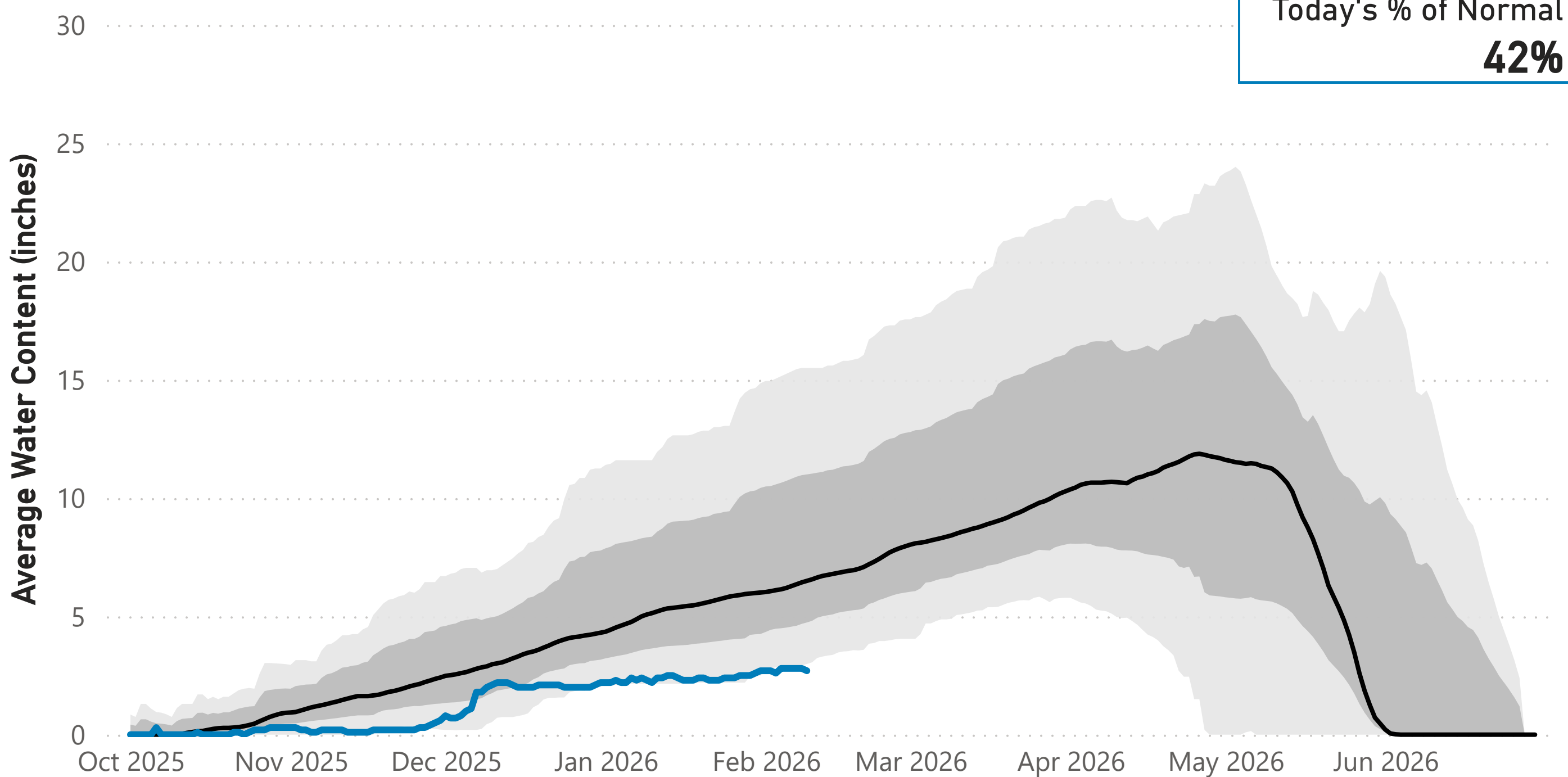


Data are from the 9 SNOTEL stations above Denver Water's Upper Colorado River diversion facilities.

Snowpack: South Platte River Watershed

● Median (1991-2020) ● Historical Range (1991-2020) ● 2025-2026

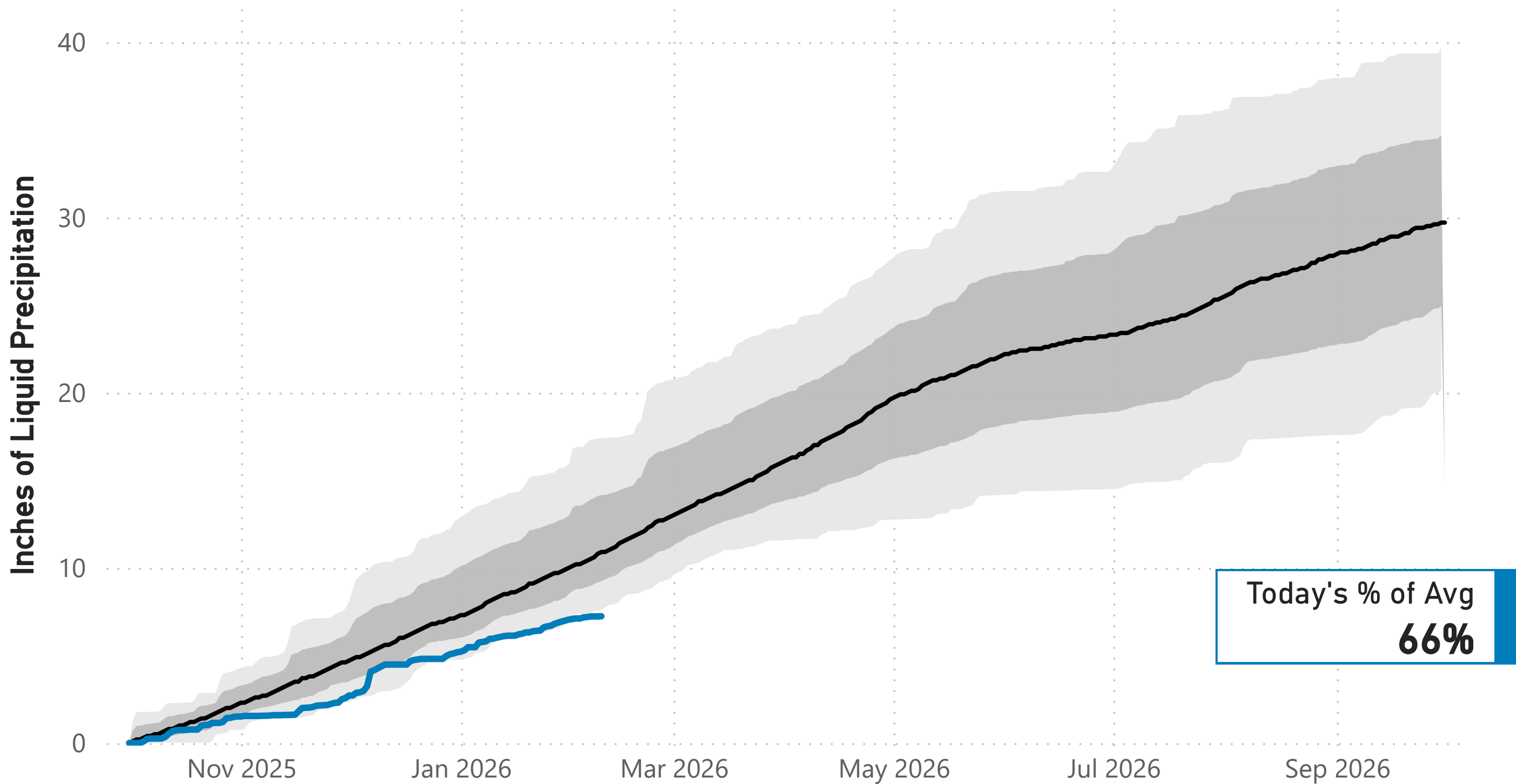
Today's % of Normal
42%



Data are from the 7 SNOTEL stations above Denver Water's Upper South Platte diversion facilities.

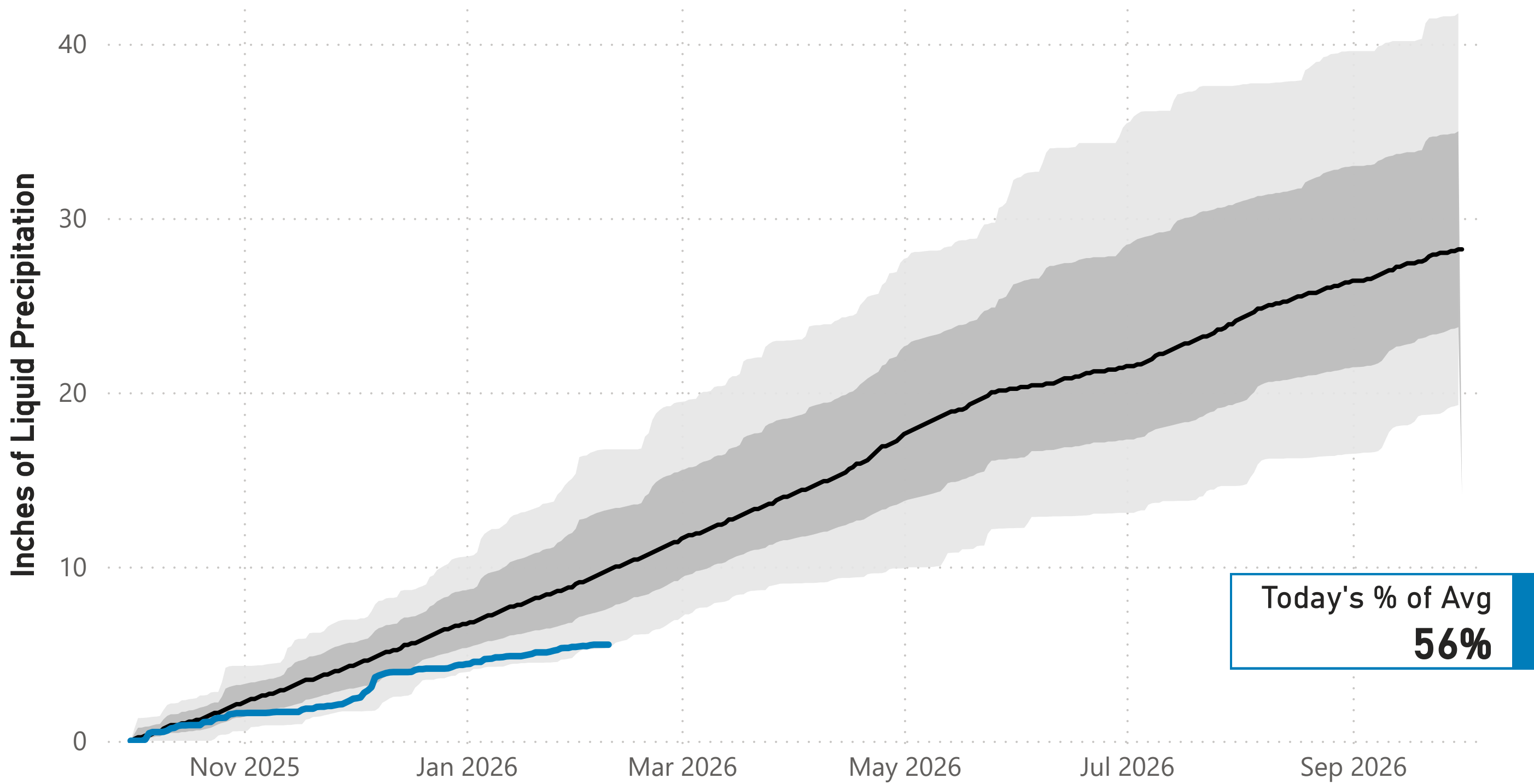
Cumulative Precipitation: Colorado River Watershed

● Average (1991-2020) ● Historical Range (1991-2020) ● 2025-2026



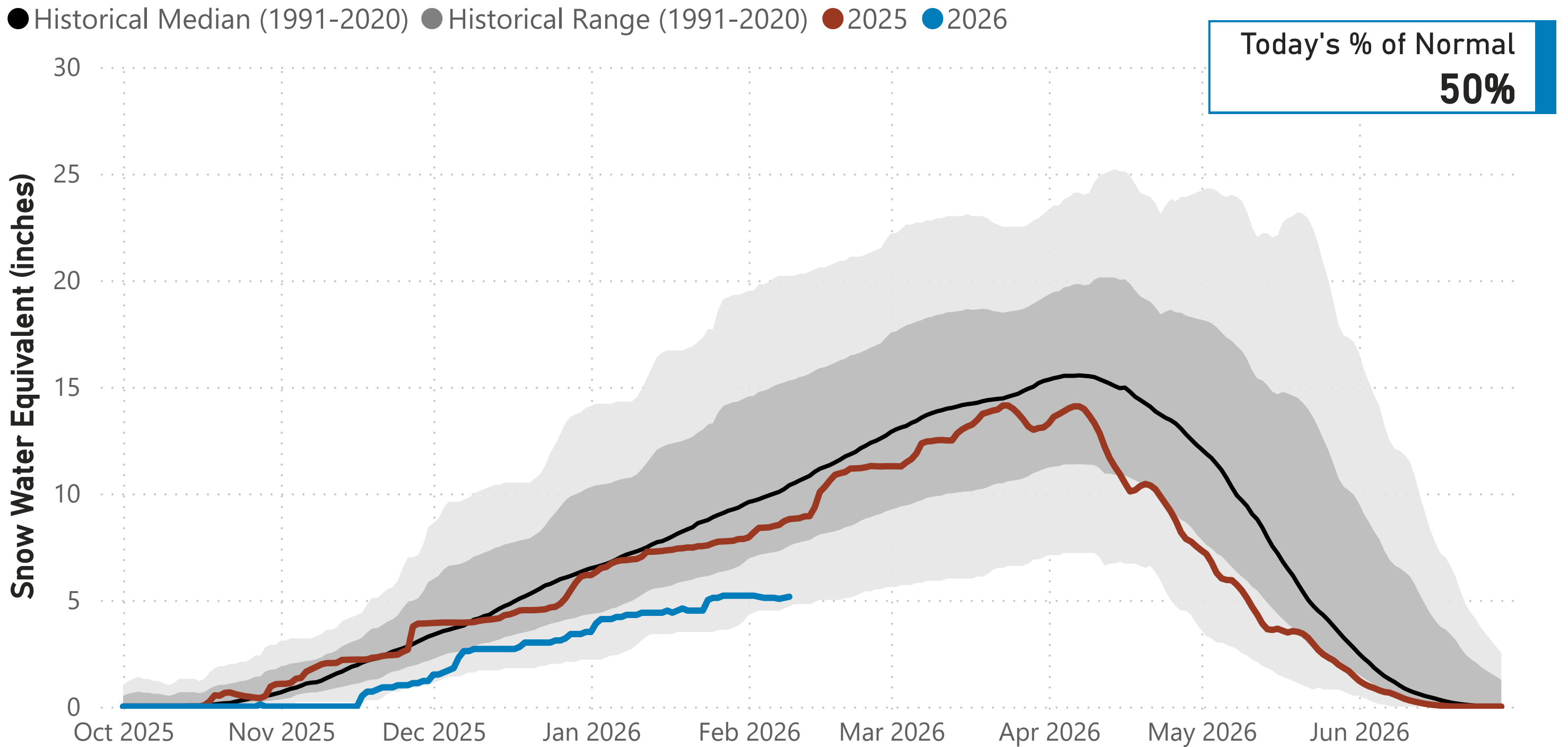
Cumulative Precipitation: South Platte Watershed

● Average (1991-2020) ● Historical Range (1991-2020) ● 2025-2026



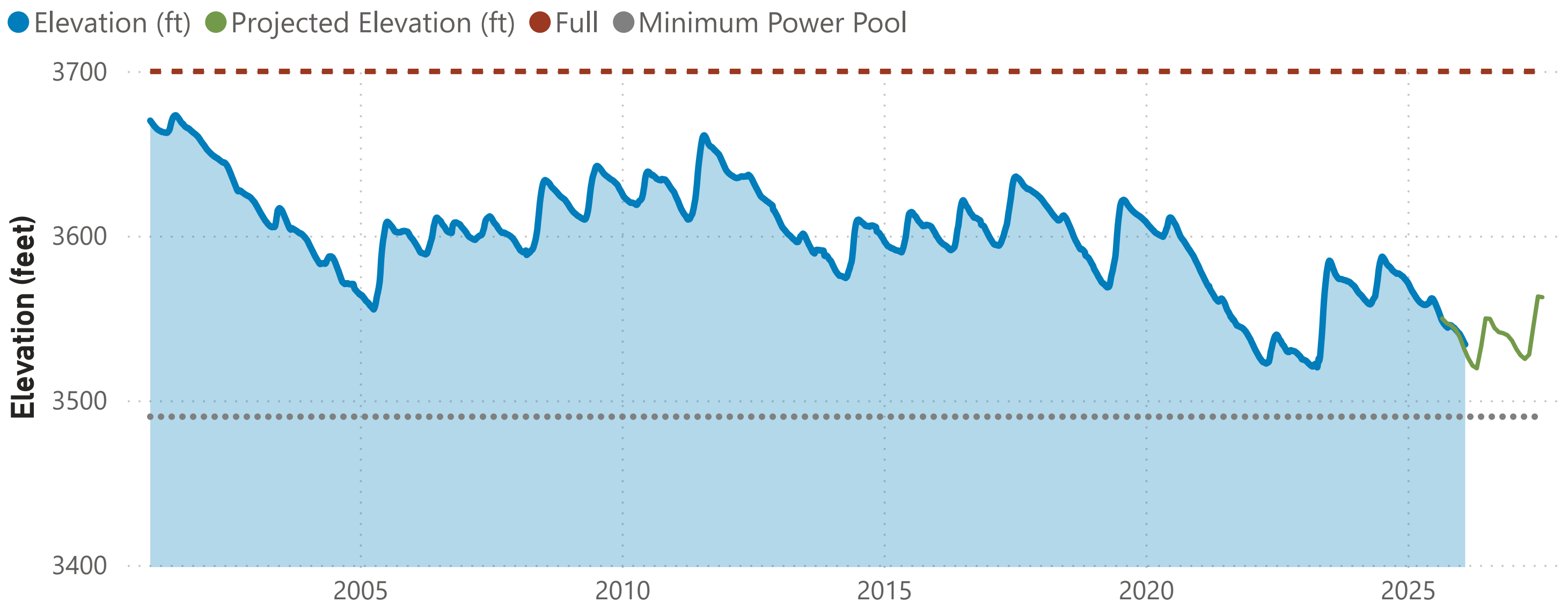
Lake Powell Report*

Colorado River Above Lake Powell Snowpack



Data are from the 104 SNOTEL stations above Lake Powell.

Lake Powell Elevation (2001-Current)



The historical and current Lake Powell elevation data come from the U.S. Bureau of Reclamation website. The projected elevation data are based on the 24-Month Study from the Bureau's Operating Plan for Colorado River System Reservoirs.

Note: * Denver Water gets half of its water supply from the Colorado River and closely monitors conditions at Lake Powell and within the greater Colorado River Basin.