



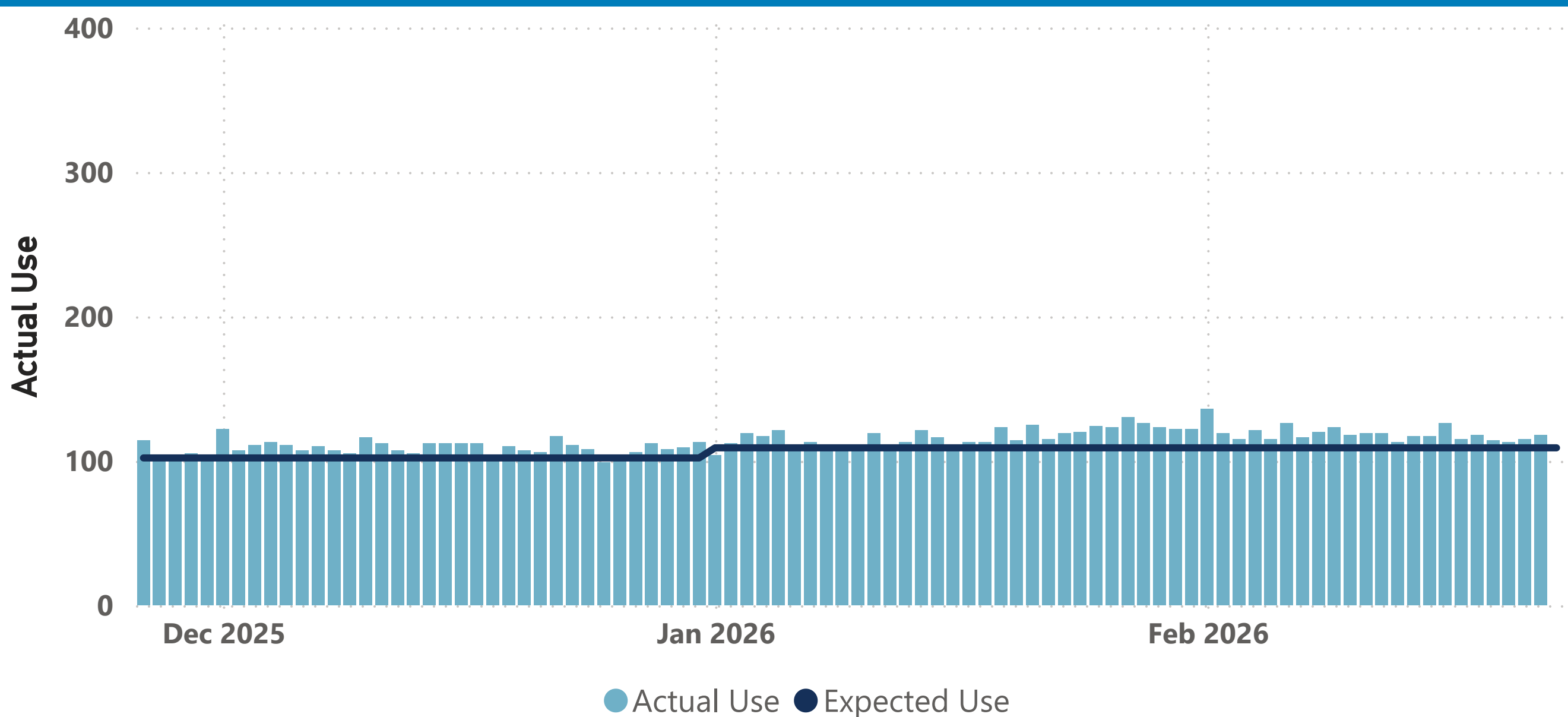
DENVER WATER

Supply Reservoir Contents

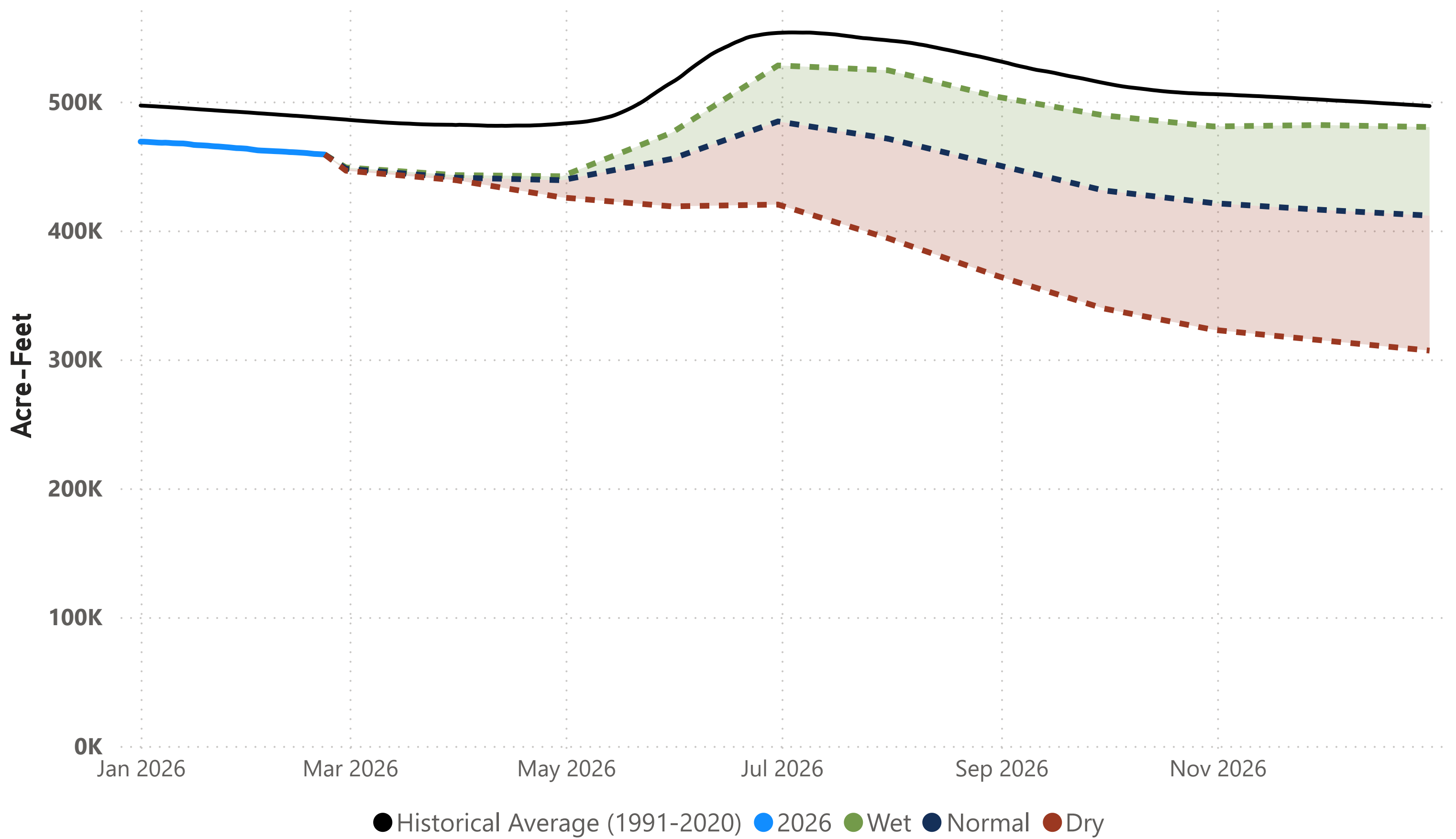
Reservoir	Current Contents	Last Year Contents	Reservoir Capacity	Current % Full	Last Year % Full	Hist Avg % Full
Antero	18,418	18,900	20,122	91	94	78
Chatfield	28,267	28,005	30,342	93	92	86
Cheesman	64,310	72,925	79,064	81	92	81
Dillon	197,570	205,966	257,304	76	80	88
Eleven Mile	99,143	100,002	97,779	101	102	102
Gross*	20,979	18,954	41,811	50	45	65
Marston	15,757	17,406	19,108	82	91	67
Meadow Creek	278	608	5,370	5	11	34
Ralston	6,834	7,340	10,776	63	68	71
Strontia Springs	7,305	6,868	7,863	92	87	91
TOTAL	458,861	476,973	569,539	81	84	86

Note: *Gross Reservoir storage is limited to 29,938 acre feet in total storage during construction activities.

Daily Use – Actual vs. Expected



Total Supply Reservoir Contents and Forecasts



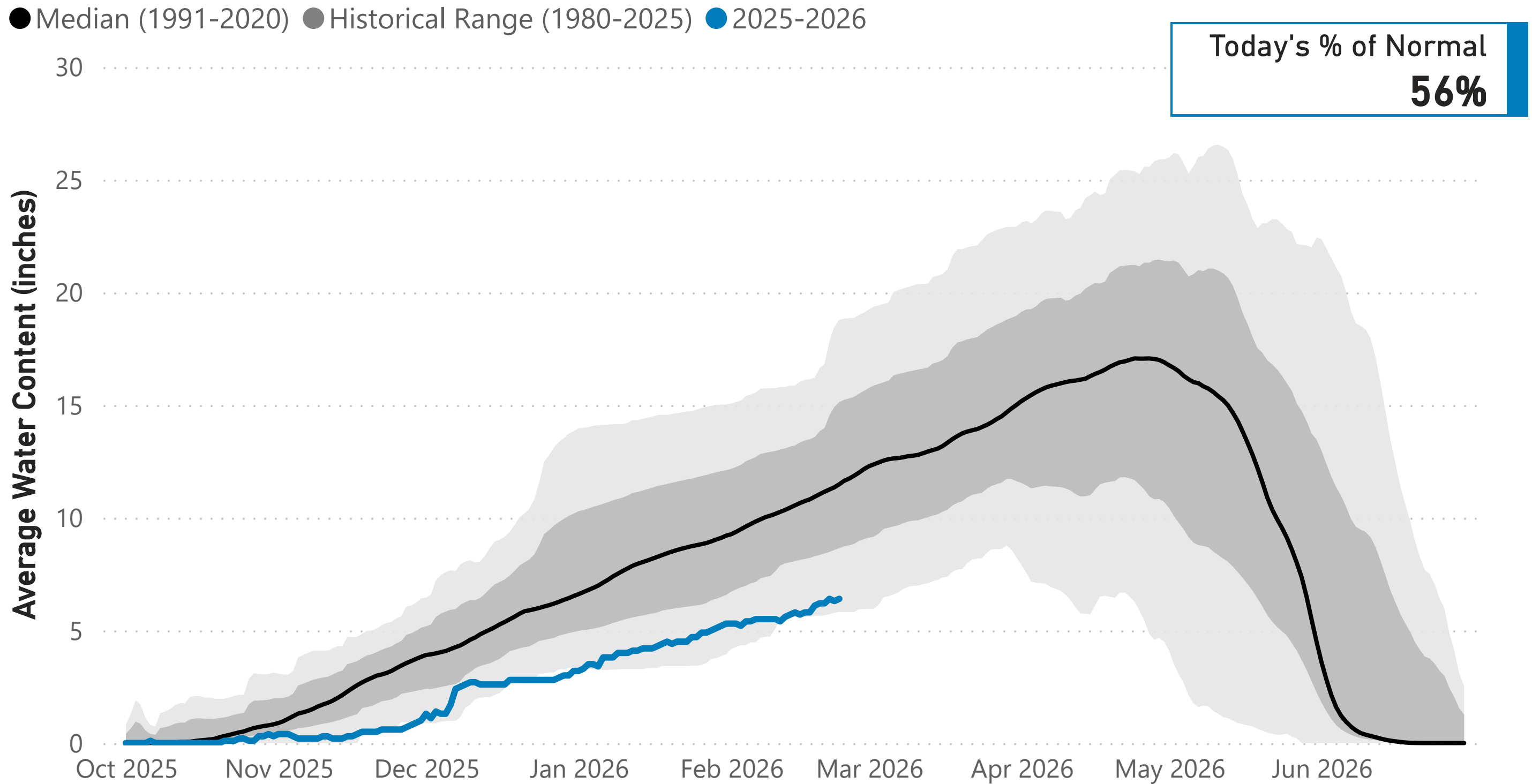
Notes: 1) Total system supply reservoir contents are shown in acre-feet (AF). 2) The solid blue line represents actual 2026 storage to date. 3) The dotted lines represent the **most probable forecast, wet conditions, and dry conditions** based on current conditions.

2026 Denver Water Daily Use Heatmap

Day of Month	Jan	Feb	Mar	Apr	May	Jun	Jul	Aug	Sep	Oct	Nov	Dec	
1	104	136											
2	112	119											
3	119	115											
4	117	121											
5	121	115											
6	110	126											
7	113	116											
8	109	120											
9	107	123											
10	111	118											
11	119	119											
12	111	119											
13	113	113											
14	121	117											
15	116	117											
16	110	126											
17	113	115											
18	113	118											
19	123	114											
20	114	113											
21	125	115											
22	115	118											
23	119												
24	120												
25	124												
26	123												
27	130												
28	126												
29	123												
30	122												
31	122												
													YTD-Avg
% of Expected Daily Use	107	109											108
Expected Daily Use	109	109	109	120	175	261	300	288	263	170	114	107	109
Monthly Average	117	119											118

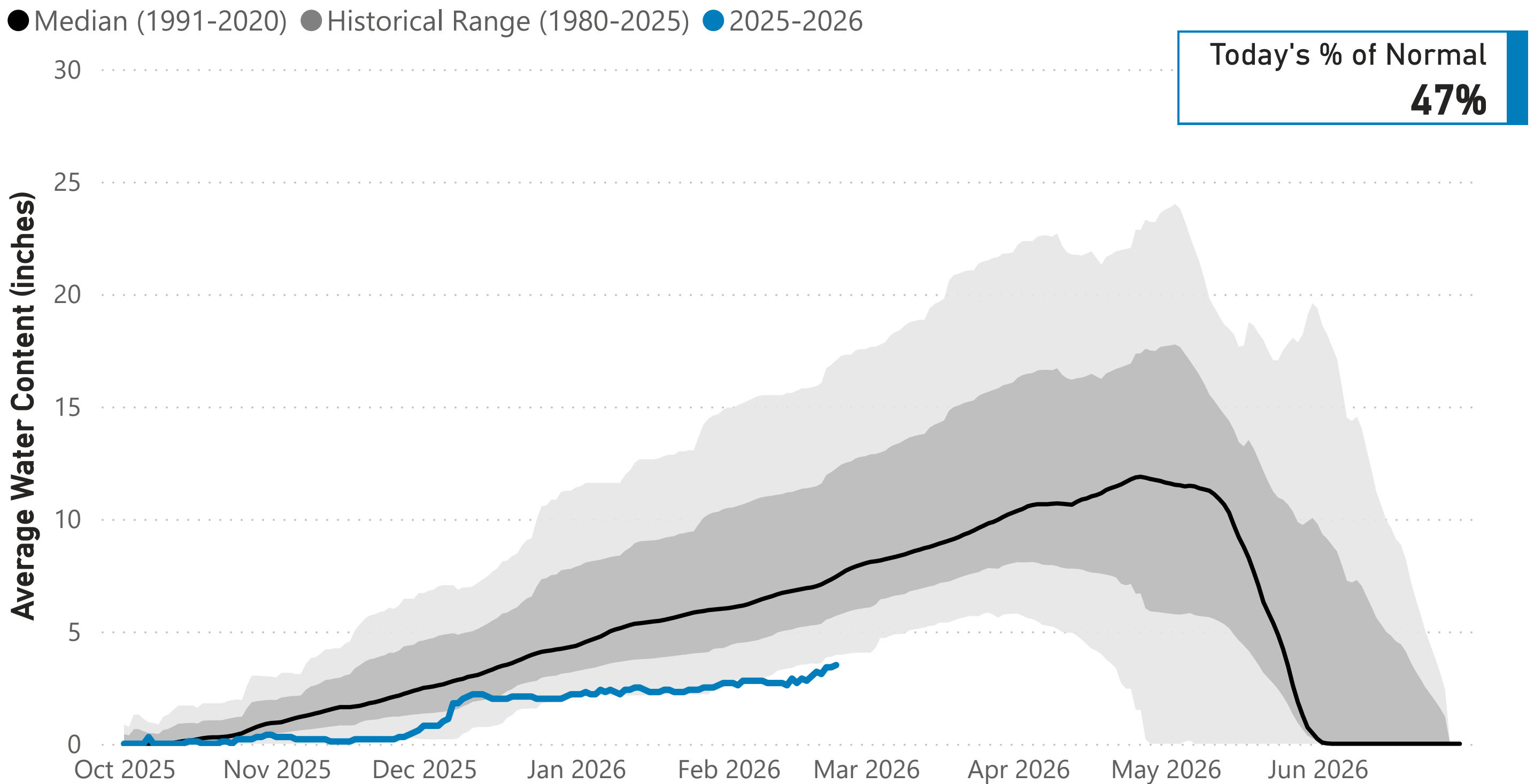
Notes: 1) Values are in million gallons (MG). 2) Expected Daily Use is based on historical use with normal weather conditions. 3) Cell colors represent deviations from **daily** expected use: **white** = expected, **red** = above expected, **blue** = below expected. 4) Values are daily totals by calendar day and month 2026.

Snowpack: Colorado River Watershed



Data are from the 9 SNOTEL stations above Denver Water's Upper Colorado River diversion facilities.

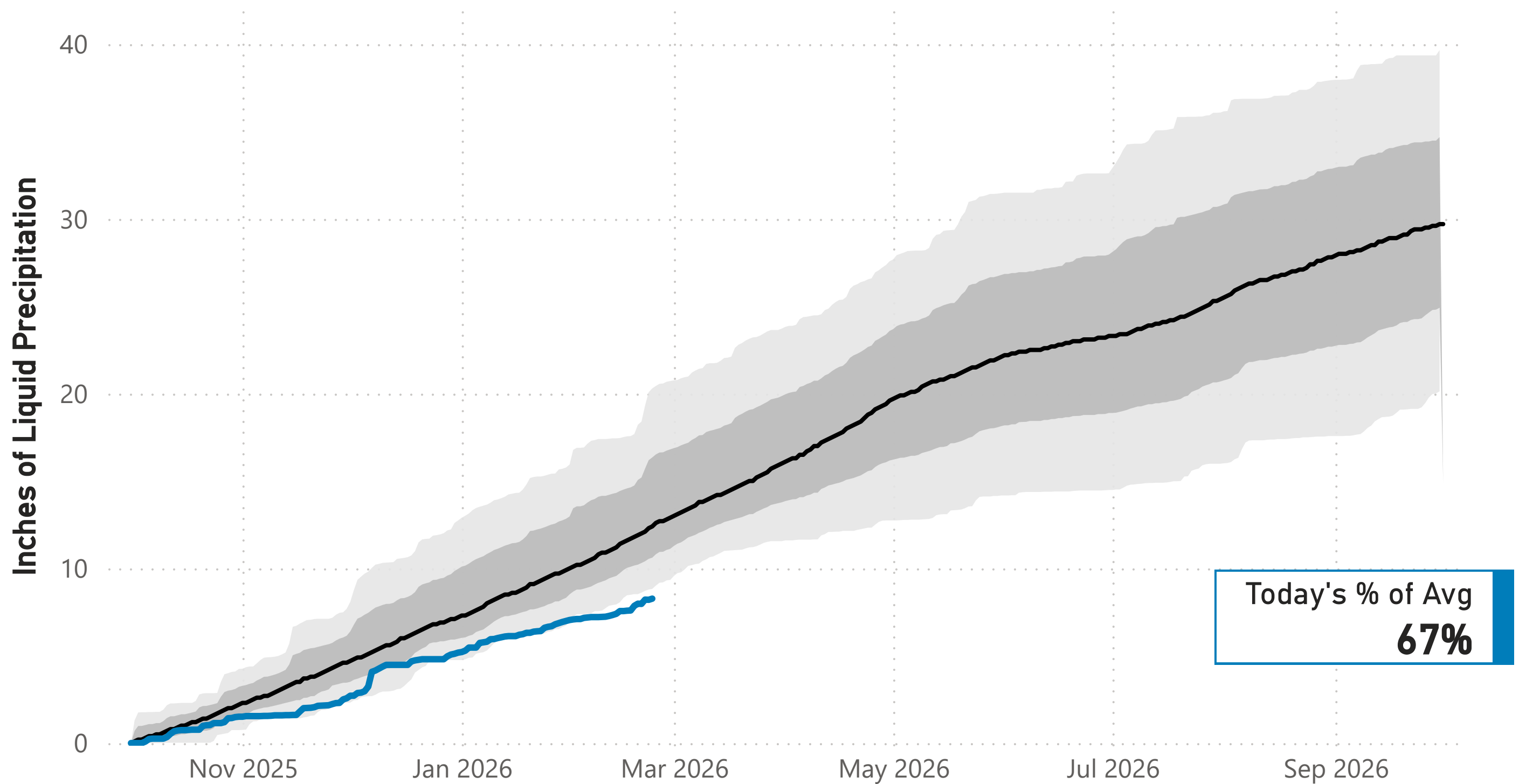
Snowpack: South Platte River Watershed



Data are from the 7 SNOTEL stations above Denver Water's Upper South Platte diversion facilities.

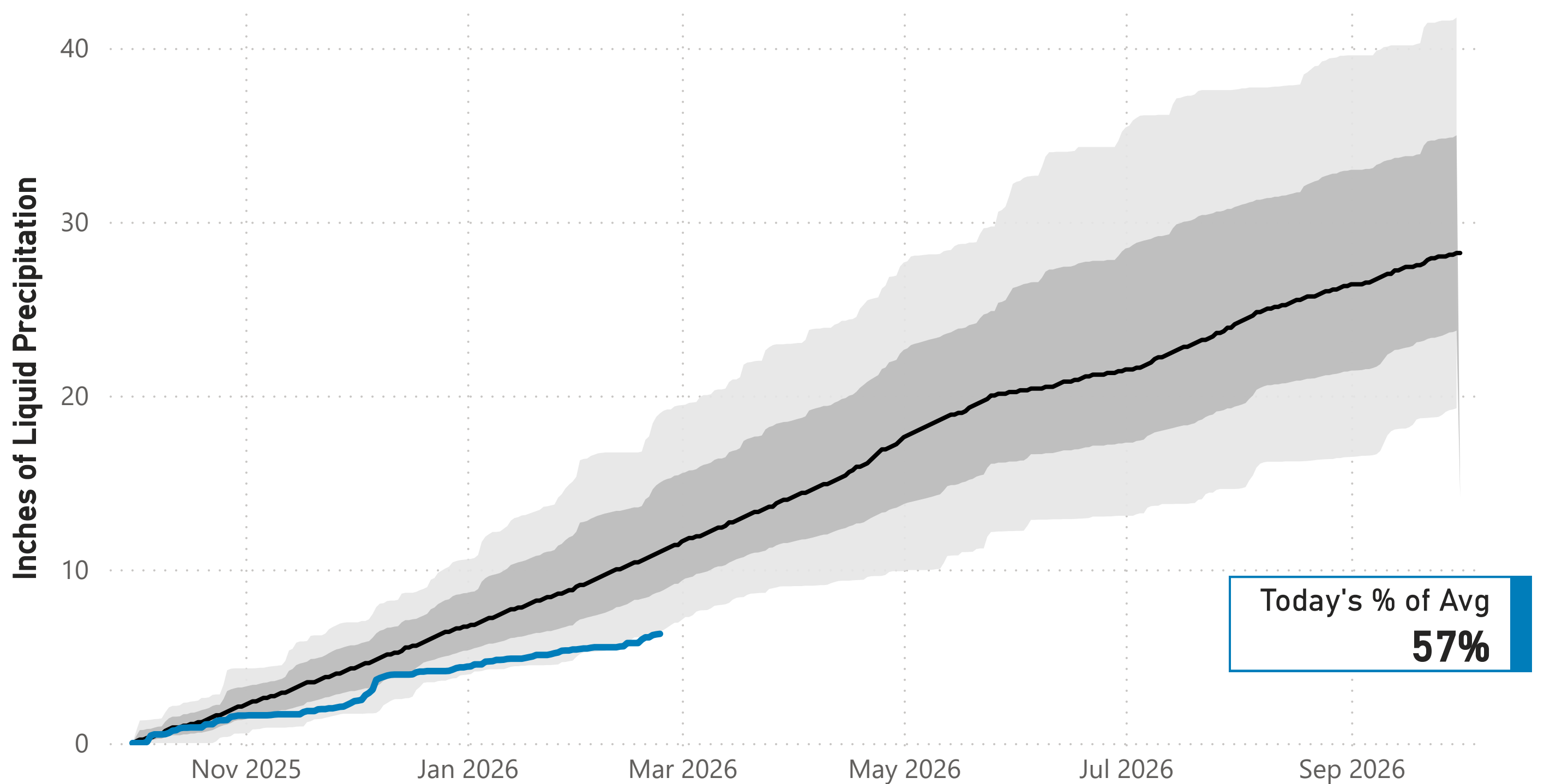
Cumulative Precipitation: Colorado River Watershed

● Average (1991-2020) ● Historical Range (1991-2020) ● 2025-2026



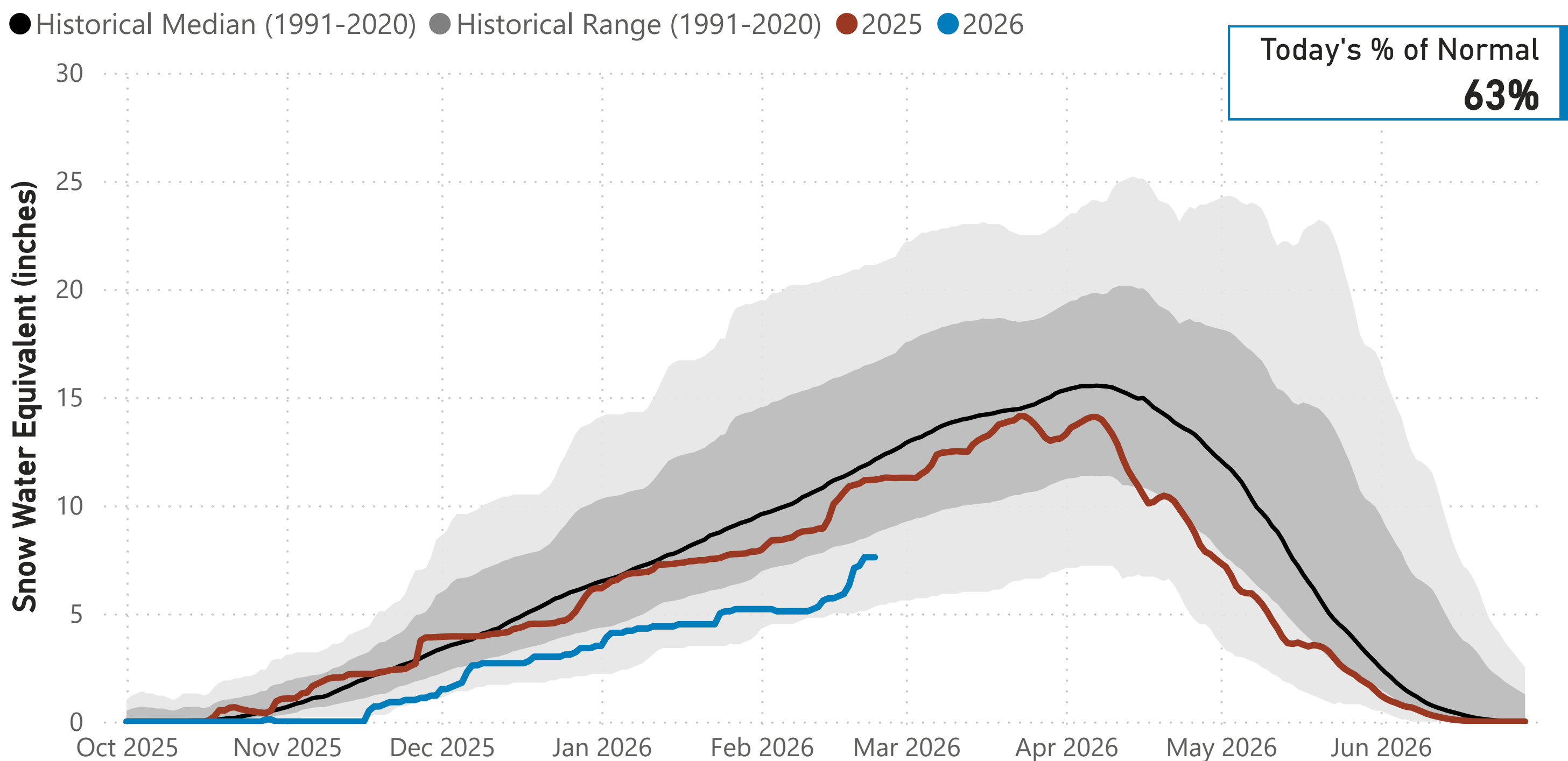
Cumulative Precipitation: South Platte Watershed

● Average (1991-2020) ● Historical Range (1991-2020) ● 2025-2026



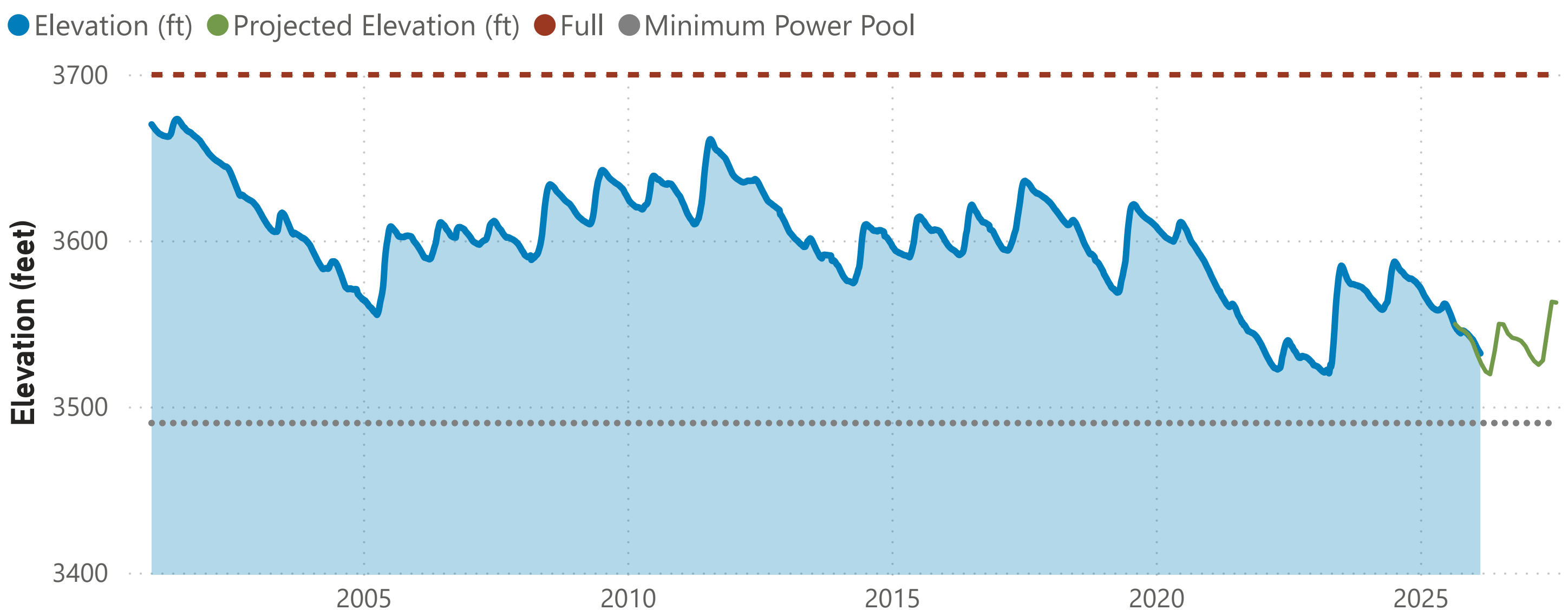
Lake Powell Report*

Colorado River Above Lake Powell Snowpack



Data are from the 104 SNOTEL stations above Lake Powell.

Lake Powell Elevation (2001-Current)



The historical and current Lake Powell elevation data come from the U.S. Bureau of Reclamation website. The projected elevation data are based on the 24-Month Study from the Bureau's Operating Plan for Colorado River System Reservoirs.

Note: * Denver Water gets half of its water supply from the Colorado River and closely monitors conditions at Lake Powell and within the greater Colorado River Basin.