



WATER WATCH REPORT

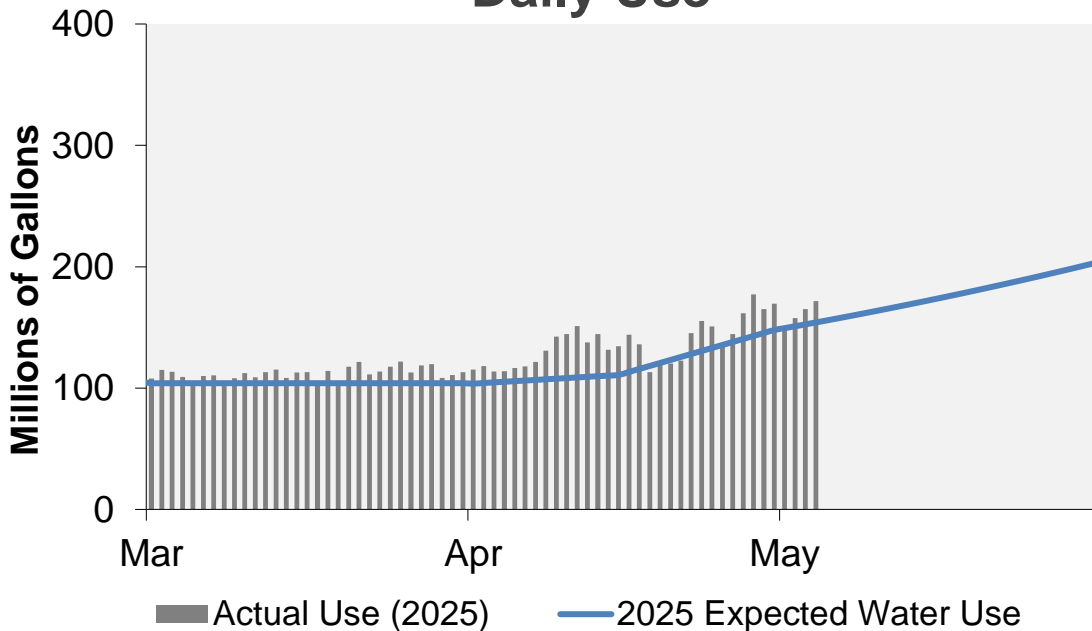
May 5, 2025

Supply Reservoir Contents

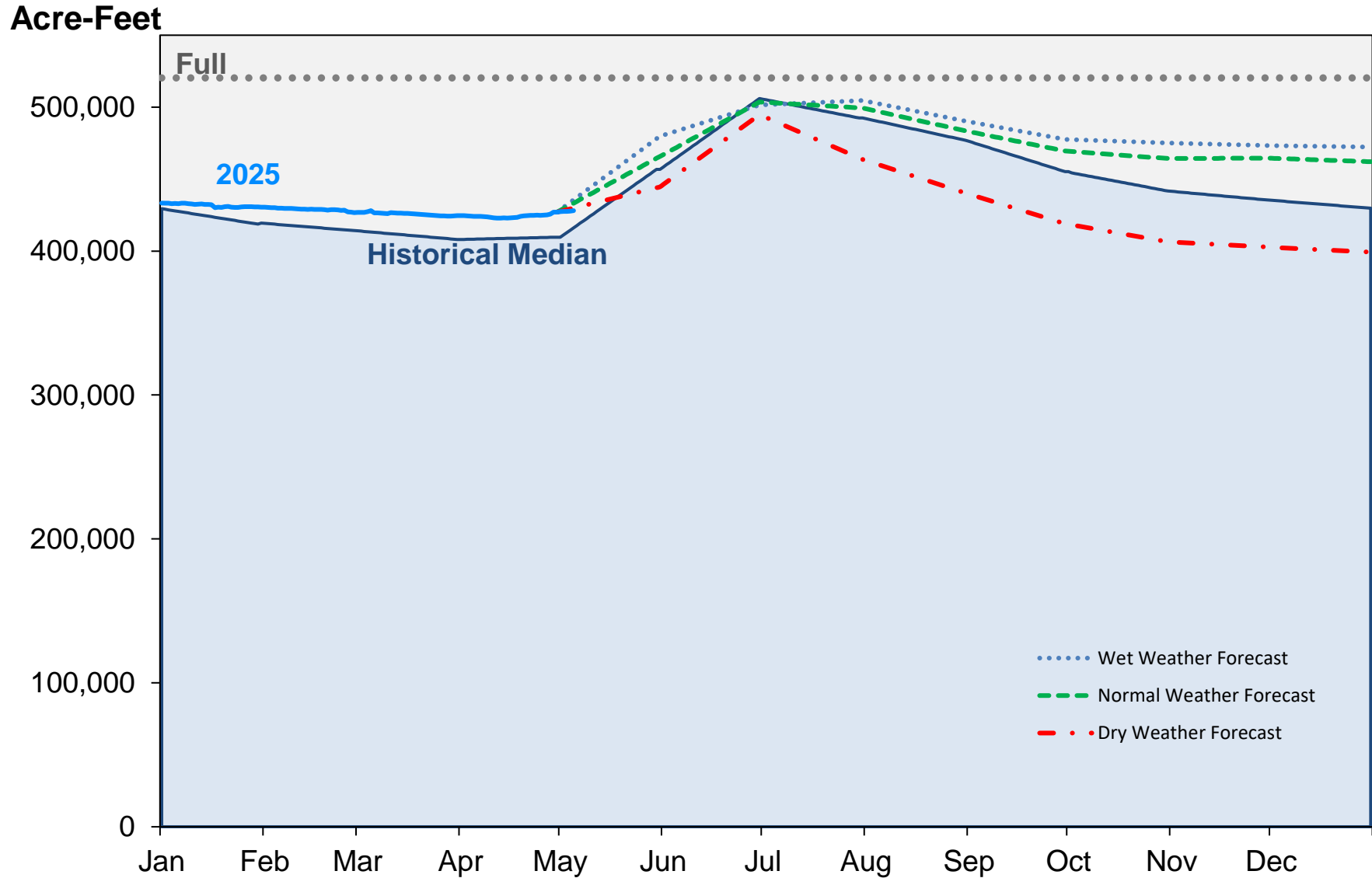
Reservoir	Capacity		Current Usable Contents (acre-feet)	Percent Full		
	(acre-feet)			Current	Last Year	Historical Median
	Total	Usable				
Antero	20,122	20,067	18,944	94%	99%	99%
Eleven Mile	97,779	97,779	99,692	102%	102%	102%
Cheesman	79,064	79,064	67,206	86%	99%	90%
Marston	19,108	13,133	7,896	60%	53%	72%
Strontia Springs	7,863	7,163	6,413	90%	87%	94%
Chatfield	28,709	12,415	12,385	100%	100%	93%
Dillon	257,304	249,095	206,051	83%	87%	86%
Gross*	41,811	29,811	6,159	21%	30%	29%
Ralston	10,776	7,276	3,270	45%	77%	71%
Meadow Creek	5,370	4,520	-	0%	0%	16%
Total	567,906	520,323	428,015	82%	87%	80%

*Gross Reservoir storage is limited to 29,938 acre feet in total storage during construction activities. The percent full figures are based on the normal usable capacity of 29,811 acre feet.

Daily Use



Supply Reservoir Contents

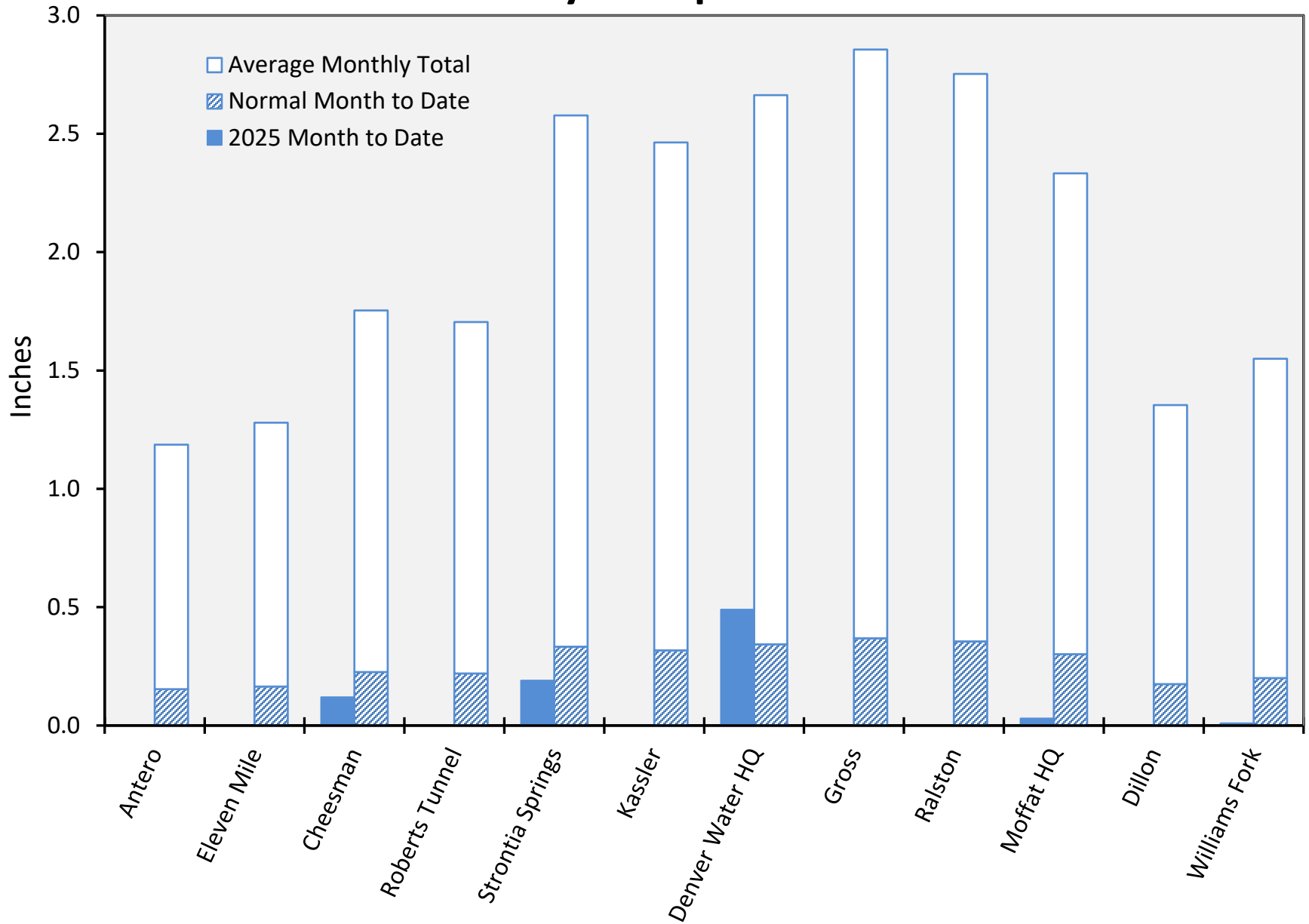


Note: Denver Water forecasts seasonal reservoir storage contents under dry future weather, normal future weather and wet future weather scenarios.

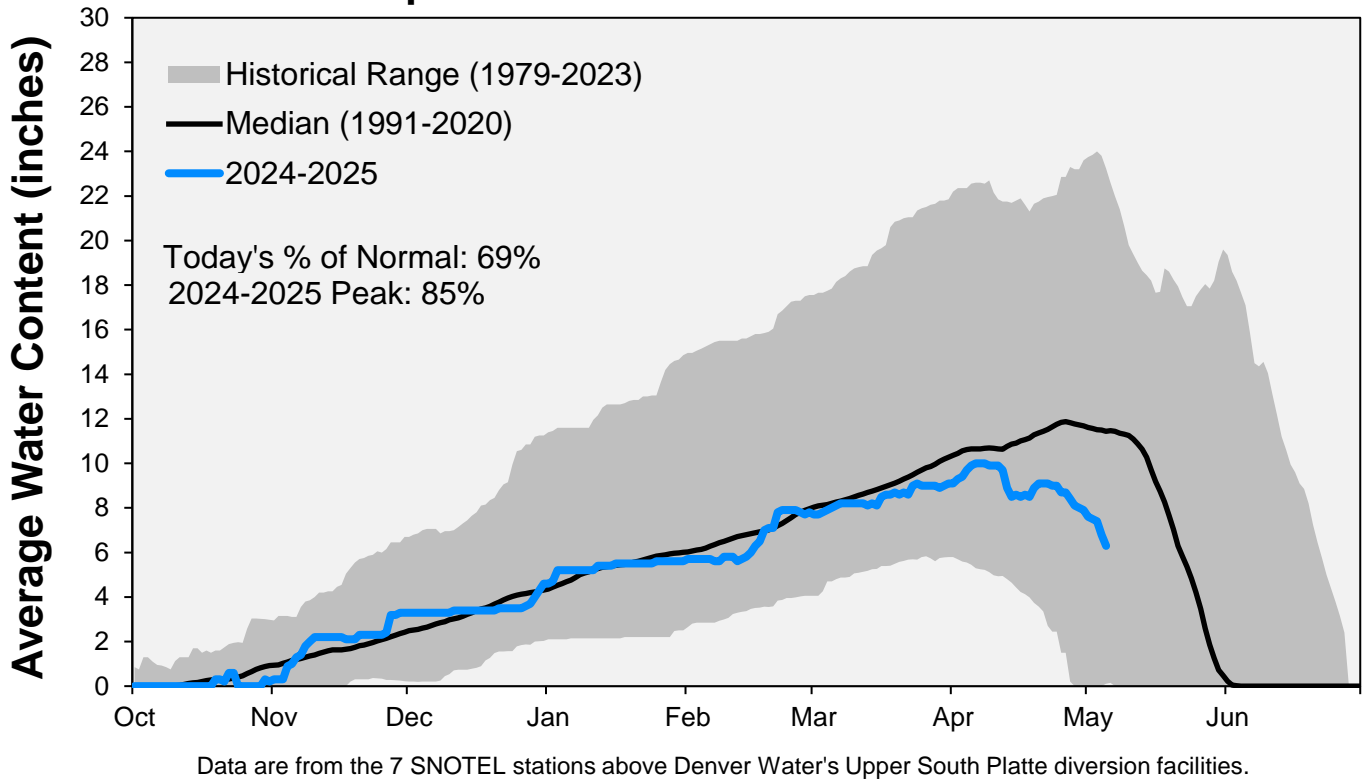
Gross Reservoir storage is limited to 29,938 acre feet in total storage during construction activities. The percent full figures are based on the normal usable capacity of 29,811 acre feet.

May 5, 2025

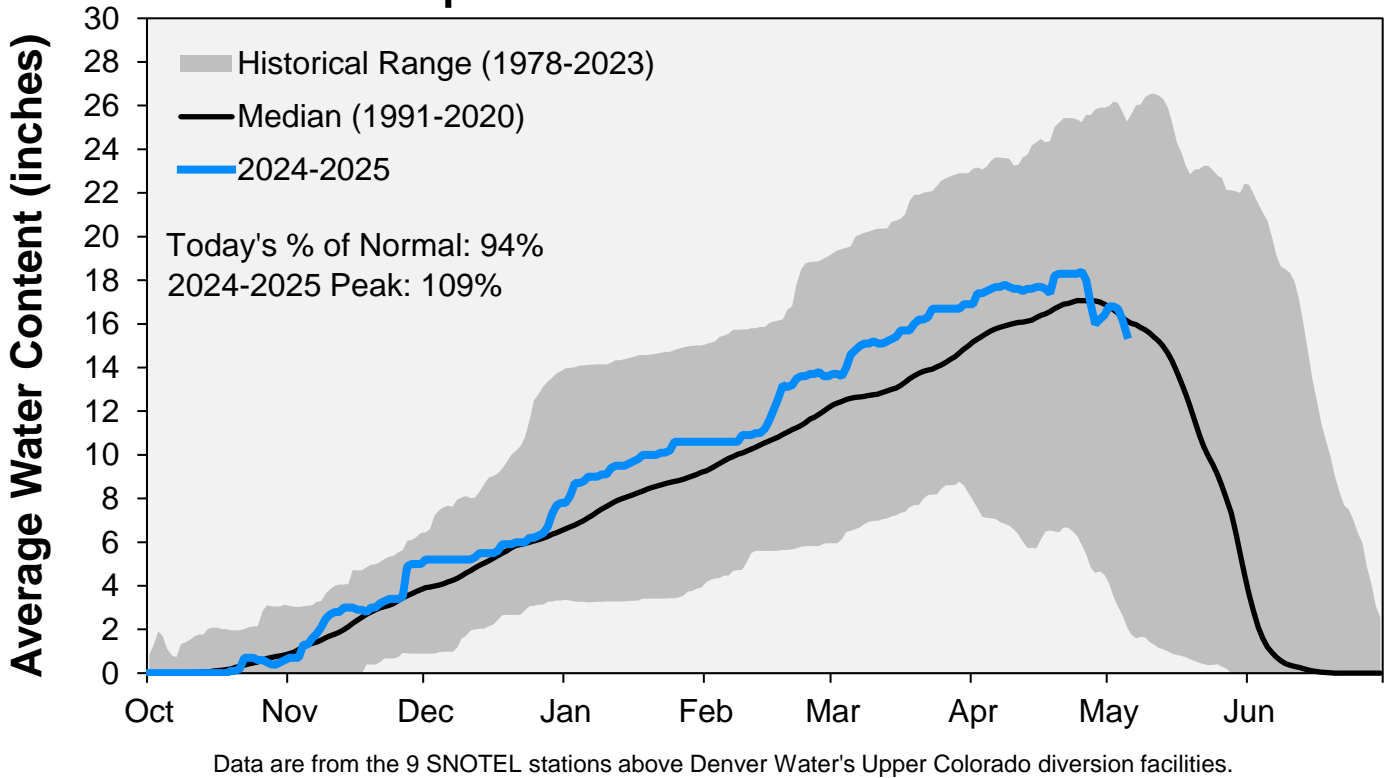
May Precipitation



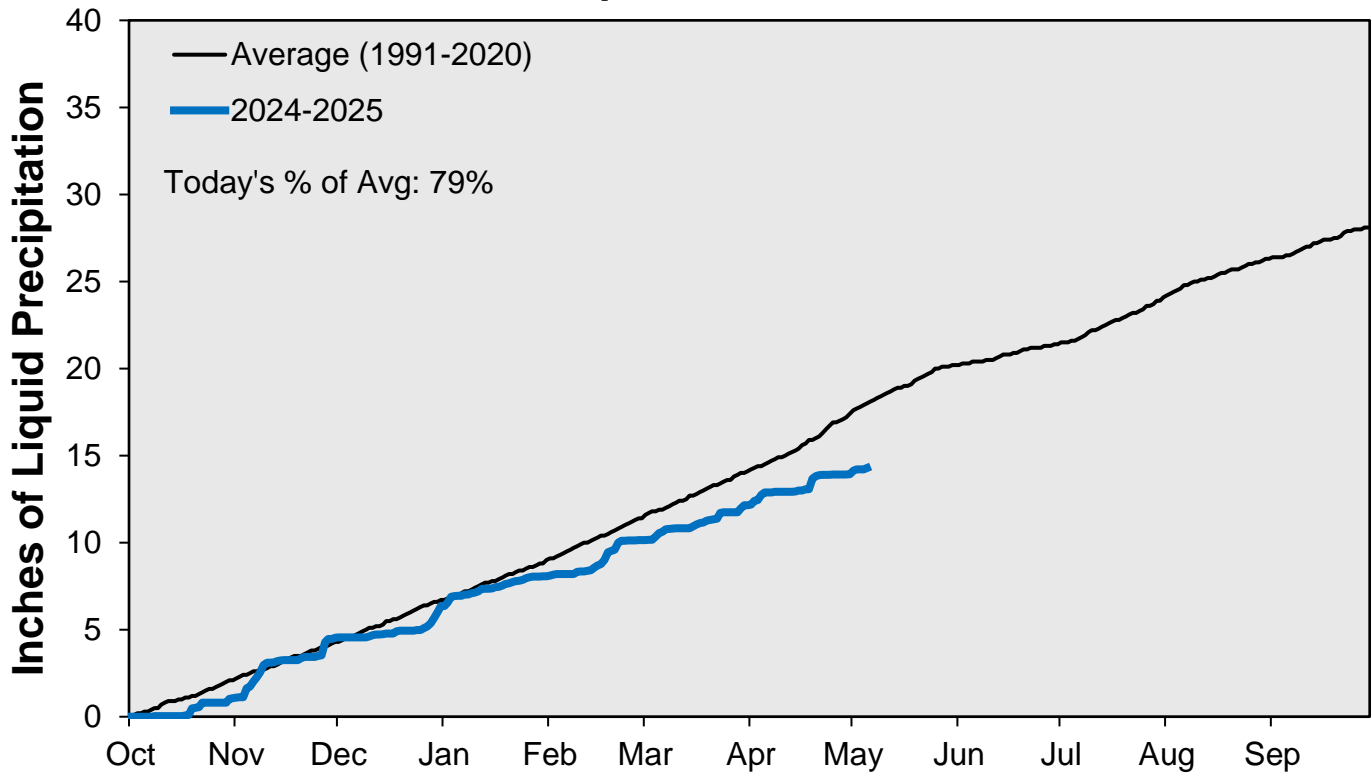
Snowpack: South Platte River Watershed



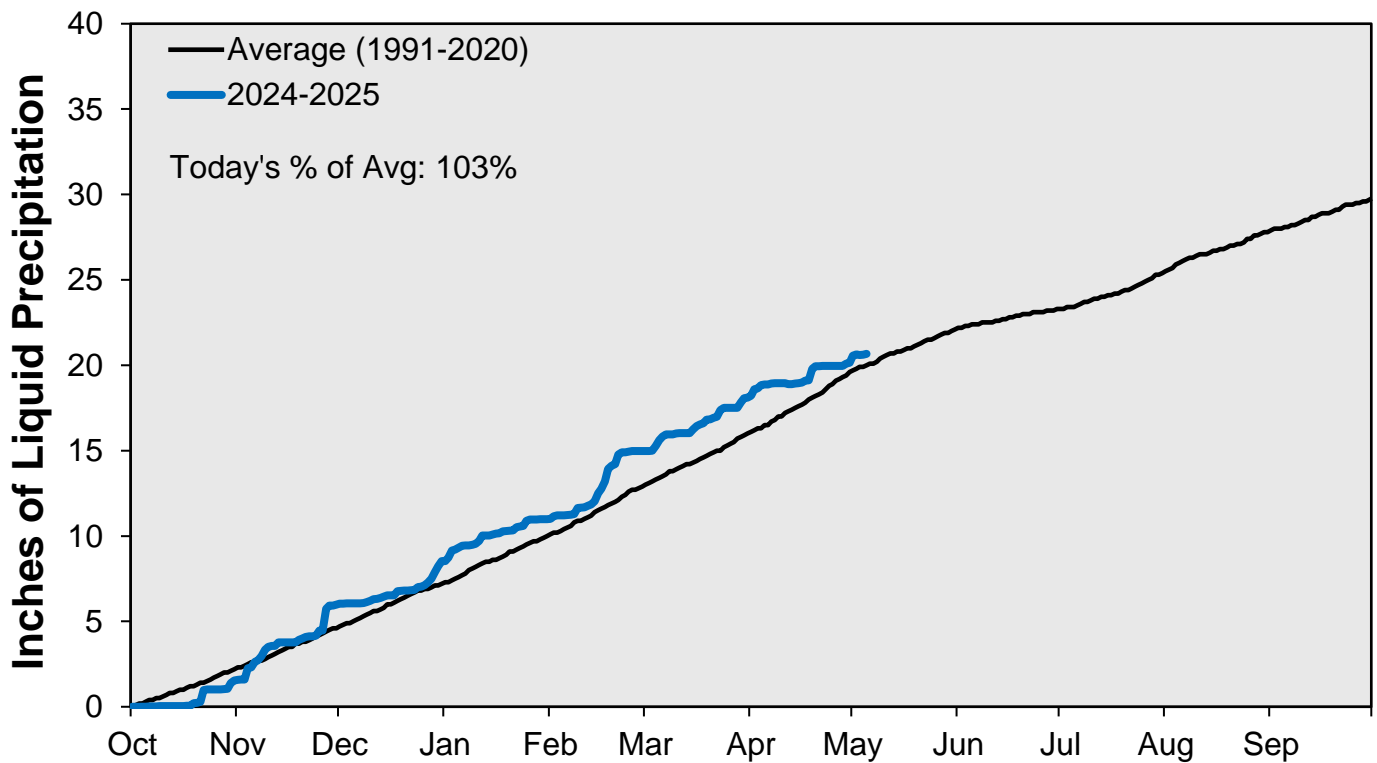
Snowpack: Colorado River Watershed



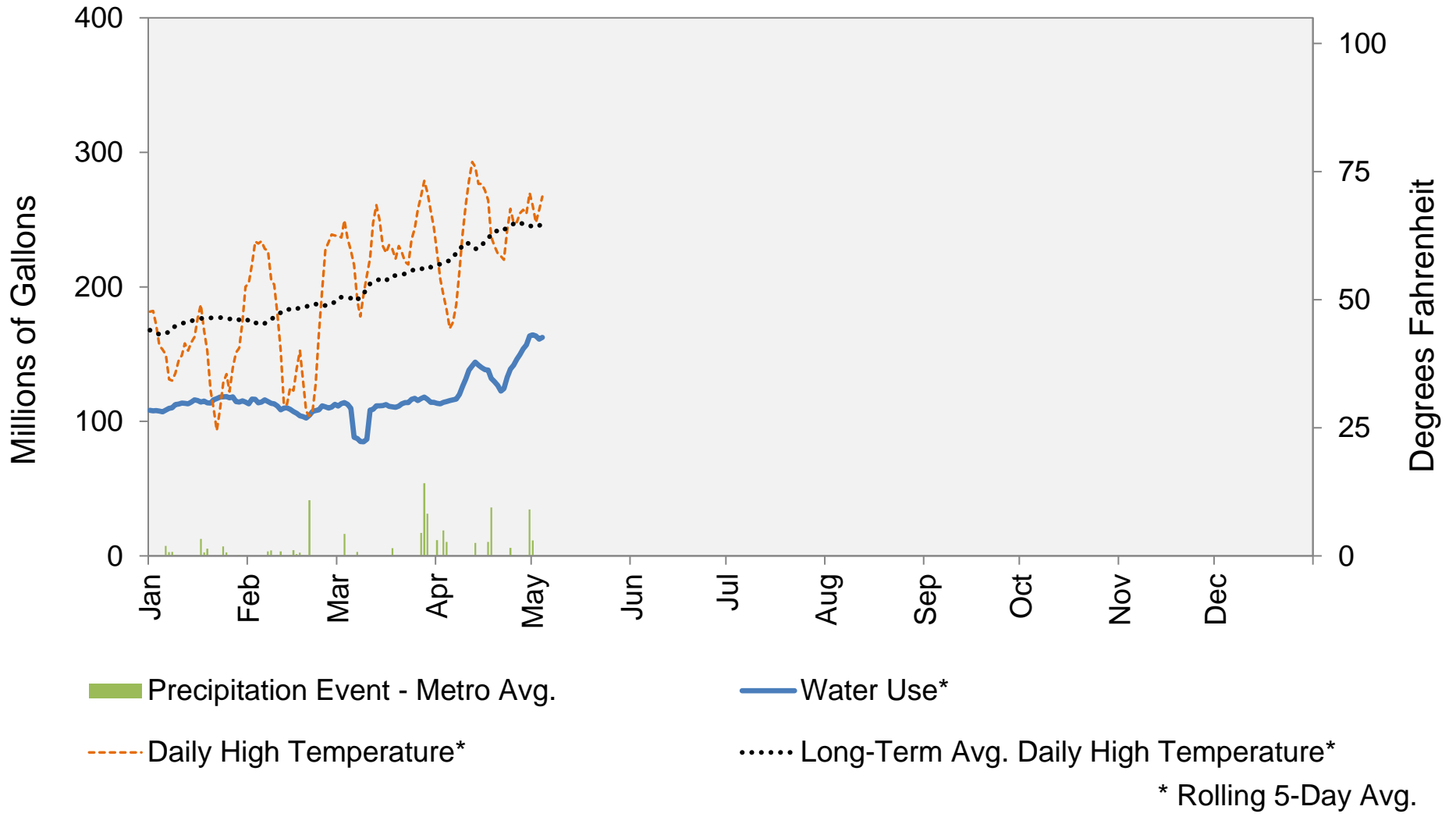
Cumulative Precipitation: South Platte River



Cumulative Precipitation: Colorado River



2025 Water Use and Weather Conditions



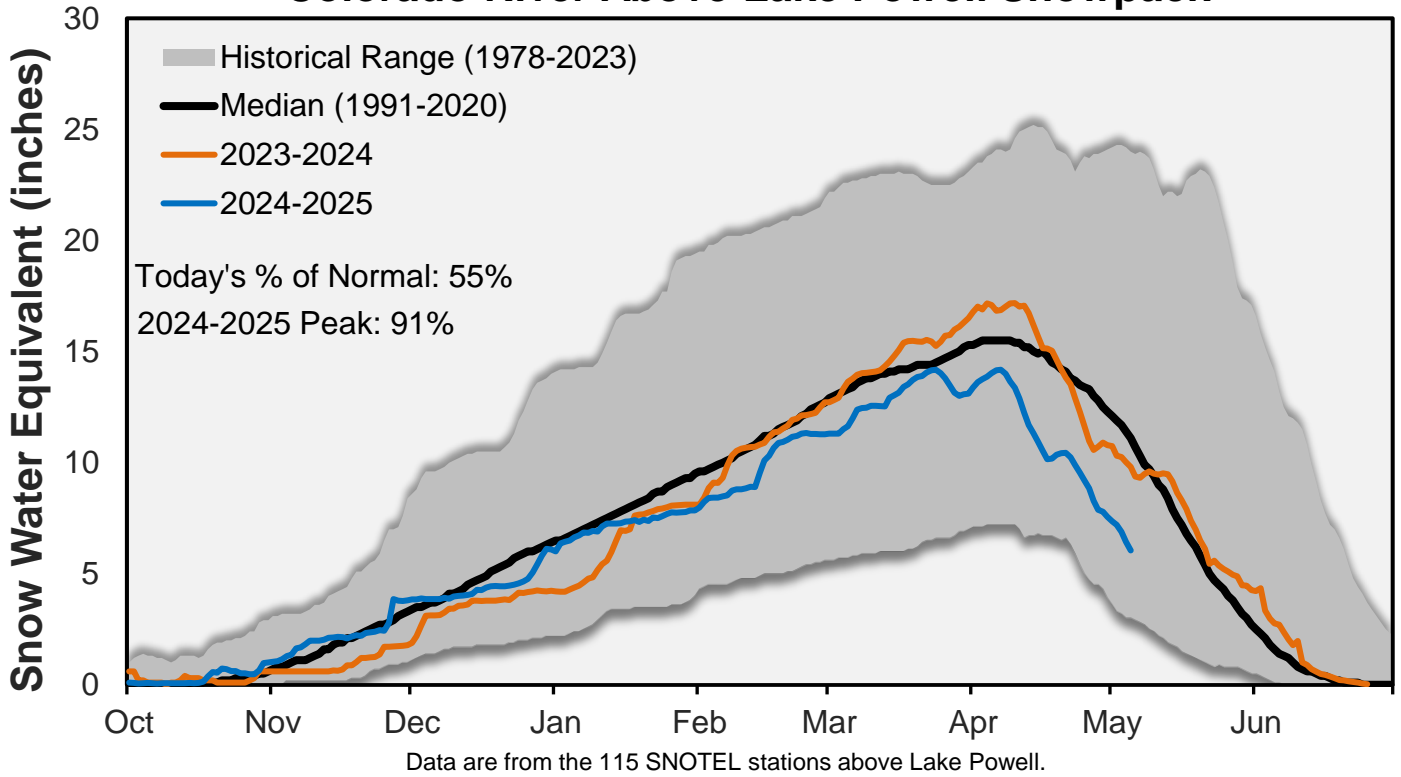
May 5, 2025

Denver Water Use and Reservoir Contents 2025													
	Jan	Feb	Mar	Apr	May	Jun	Jul	Aug	Sep	Oct	Nov	Dec	YTD-Avg
Predicted End-of-Month Supply Reservoir Contents (Full = 520,323 AF)	465,700												
Actual End-of-Month Supply Reservoir Contents (AF)	430,582	426,765	424,550	427,080									
Actual % Full	83%	82%	82%	82%									
Historical Median % Full	81%	80%	79%	79%	88%	98%	95%	92%	88%	85%	84%	83%	
2025 Expected Daily Use (MG)	105	105	104	119	175	269	304	289	266	167	108	102	110
Actual Daily Use (MG)	1	106	112	108	115	148							
	2	109	117	115	118	158							
	3	109	114	113	114	165							
	4	104	112	109	114	172							
	5	108	116	103	117								
	6	112	121	110	118								
	7	116	111	110	121								
	8	110	107	102	131								
	9	117	110	108	142								
D	10	110	108	112	145								
A	11	115	106	109	151								
Y	12	115	117	113	138								
	13	109	108	115	144								
O	14	123	105	108	132								
F	15	119	100	113	135								
	16	112	100	113	144								
M	17	110	108	106	136								
O	18	112	105	114	113								
N	19	115	100	106	120								
T	20	119	110	118	120								
H	21	123	115	121	123								
	22	115	111	111	145								
	23	118	108	114	155								
	24	117	114	118	151								
	25	120	106	122	135								
	26	118	110	113	145								
	27	118	115	119	162								
	28	100	118	120	177								
	29	115		108	165								
	30	125		111	170								
	31	113		113	158								
Monthly Average	114	110	112	137	161								120
% of 2025 Expected Daily Use	108%	105%	108%	115%	92%								109%

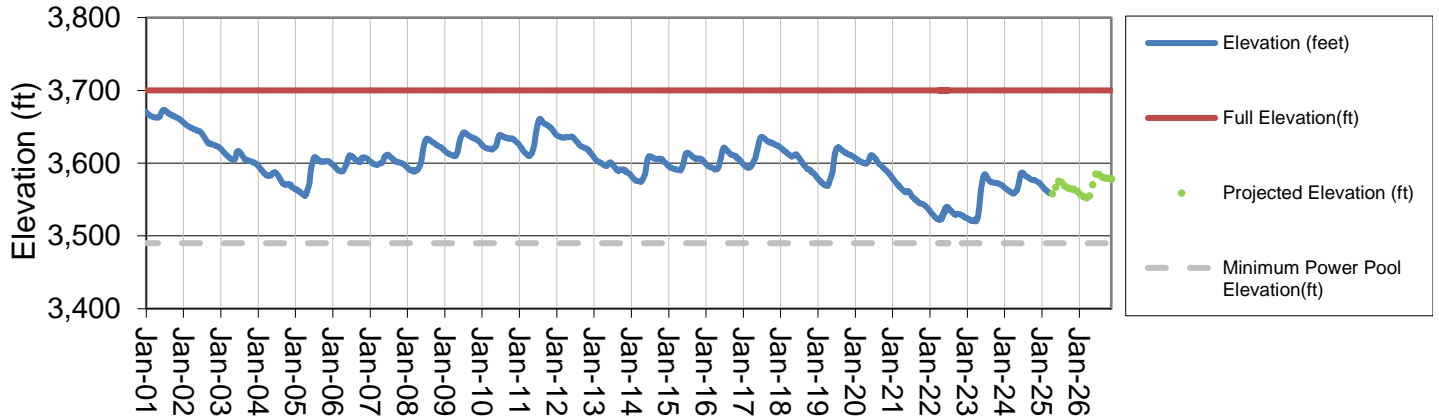
Notes: 1) "AF" denotes acre-feet. "MG" denotes million gallons. 2) Expected Daily Use is based on historical use with normal weather conditions. 3) The predicted end-of-month supply reservoir contents figures assume normal weather after May 1st, 2025. 4) The differences between predicted and actual end-of-month supply reservoir contents are the result of normal estimation error of daily use, supply, evaporation, carriage losses and raw water deliveries. 5) Predicted supply reservoir contents last updated on May 1st, 2025. 6) Daily water figures are subject to change.

Lake Powell Report*

Colorado River Above Lake Powell Snowpack



Lake Powell Elevation (2001-Current)



* Denver Water gets half of its water supply from the Colorado River and closely monitors conditions at Lake Powell and within the greater Colorado River Basin.