



WATER WATCH REPORT

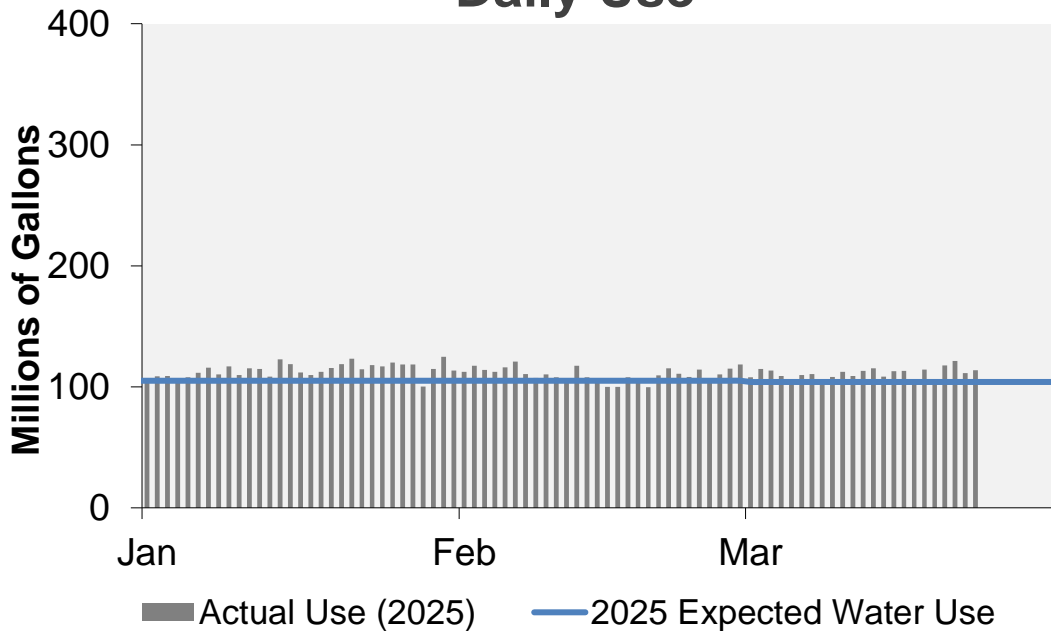
March 24, 2025

Supply Reservoir Contents

Reservoir	Capacity		Current Usable Contents (acre-feet)	Percent Full		
	(acre-feet)			Current	Last Year	Historical Median
	Total	Usable				
Antero	20,122	20,067	18,796	94%	100%	99%
Eleven Mile	97,779	97,779	99,280	102%	102%	102%
Cheesman	79,064	79,064	71,421	90%	85%	84%
Marston	19,108	13,133	9,887	75%	60%	58%
Strontia Springs	7,863	7,163	6,348	89%	88%	94%
Chatfield	28,709	12,415	12,084	97%	100%	96%
Dillon	257,304	249,095	197,810	79%	84%	87%
Gross*	41,811	29,811	3,542	12%	16%	35%
Ralston	10,776	7,276	5,661	78%	81%	53%
Meadow Creek	5,370	4,520	-	0%	0%	12%
Total	567,906	520,323	424,828	82%	83%	79%

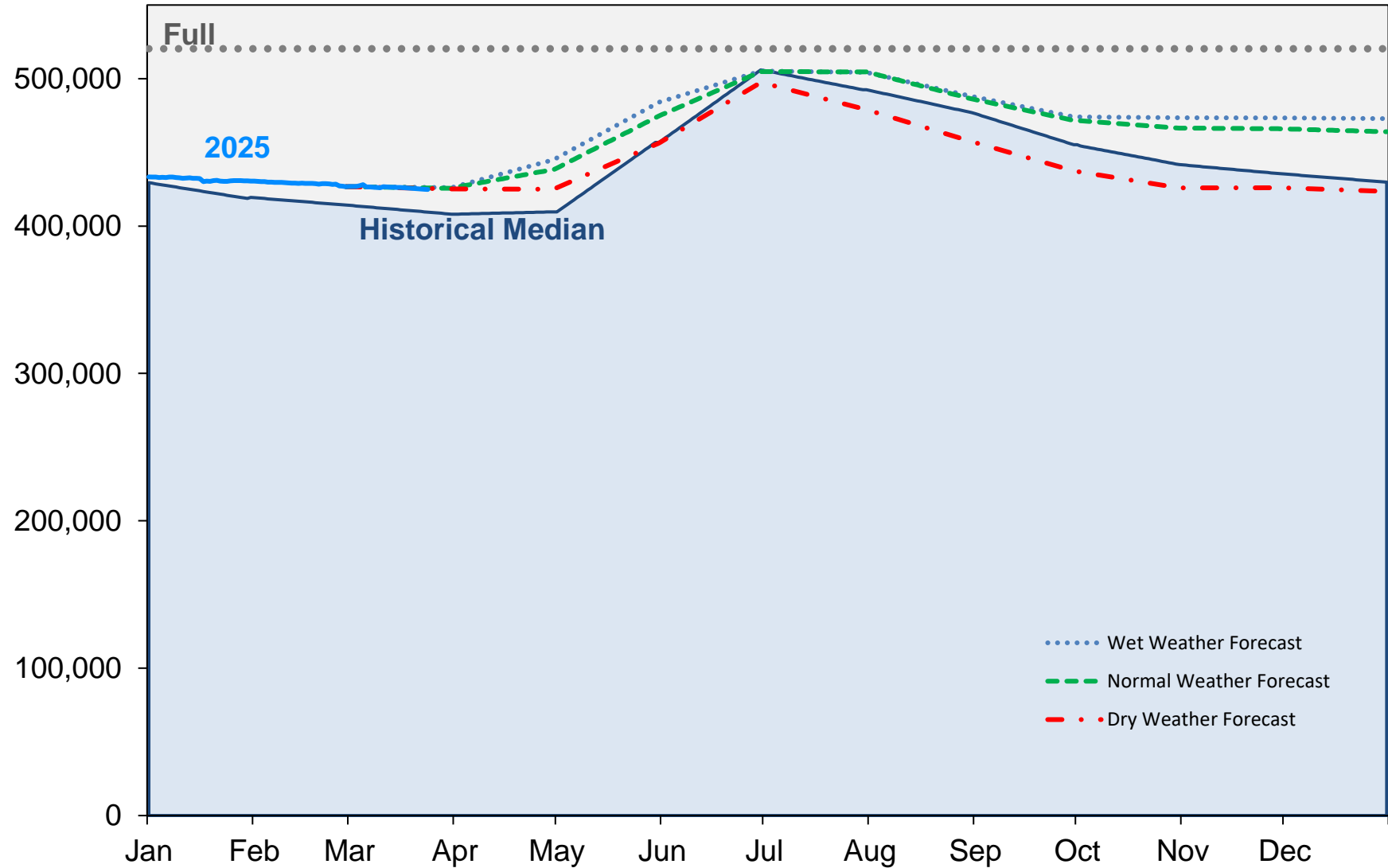
*Gross Reservoir storage is limited to 29,938 acre feet in total storage during construction activities. The percent full figures are based on the normal usable capacity of 29,811 acre feet.

Daily Use



Supply Reservoir Contents

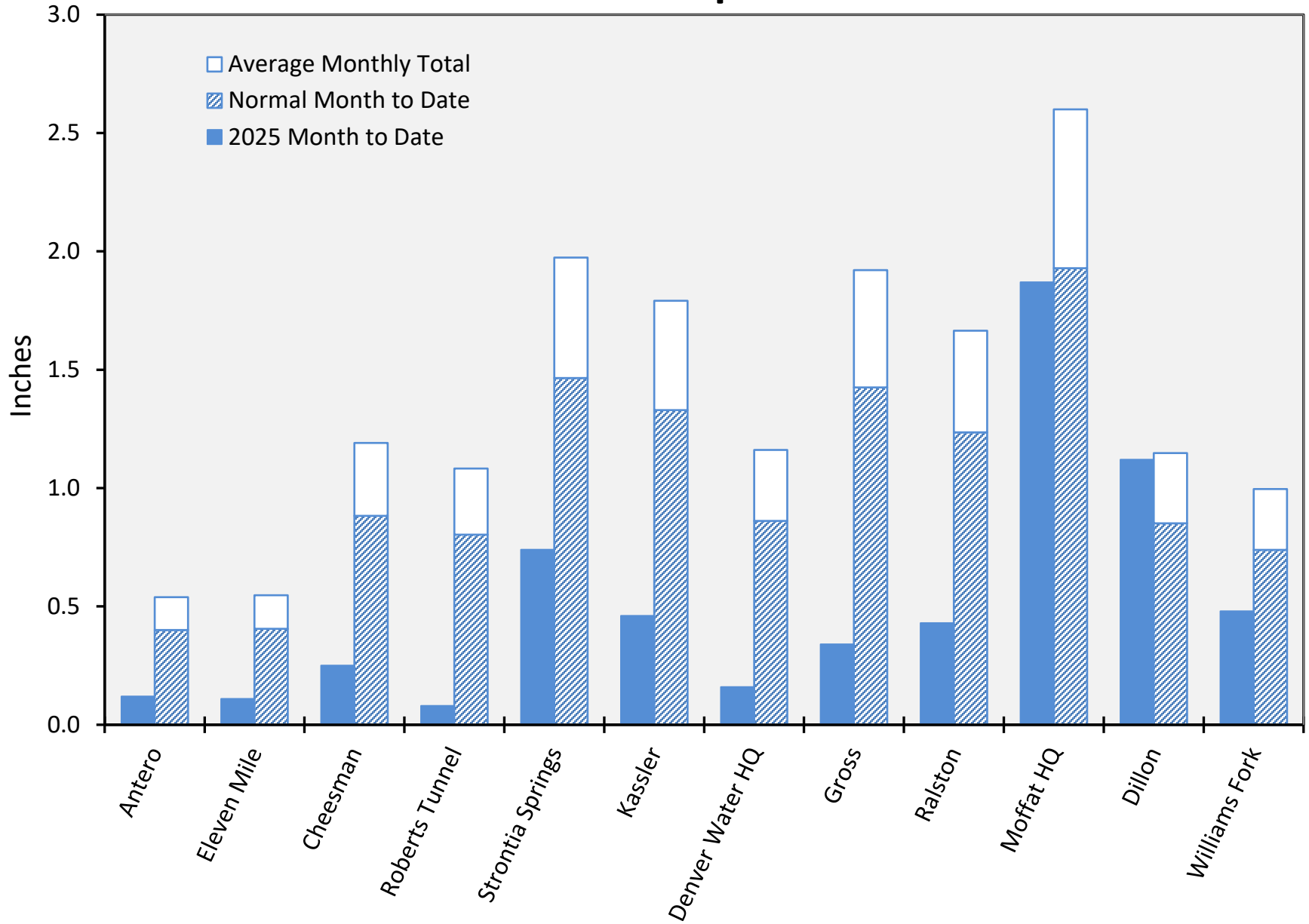
Acre-Feet



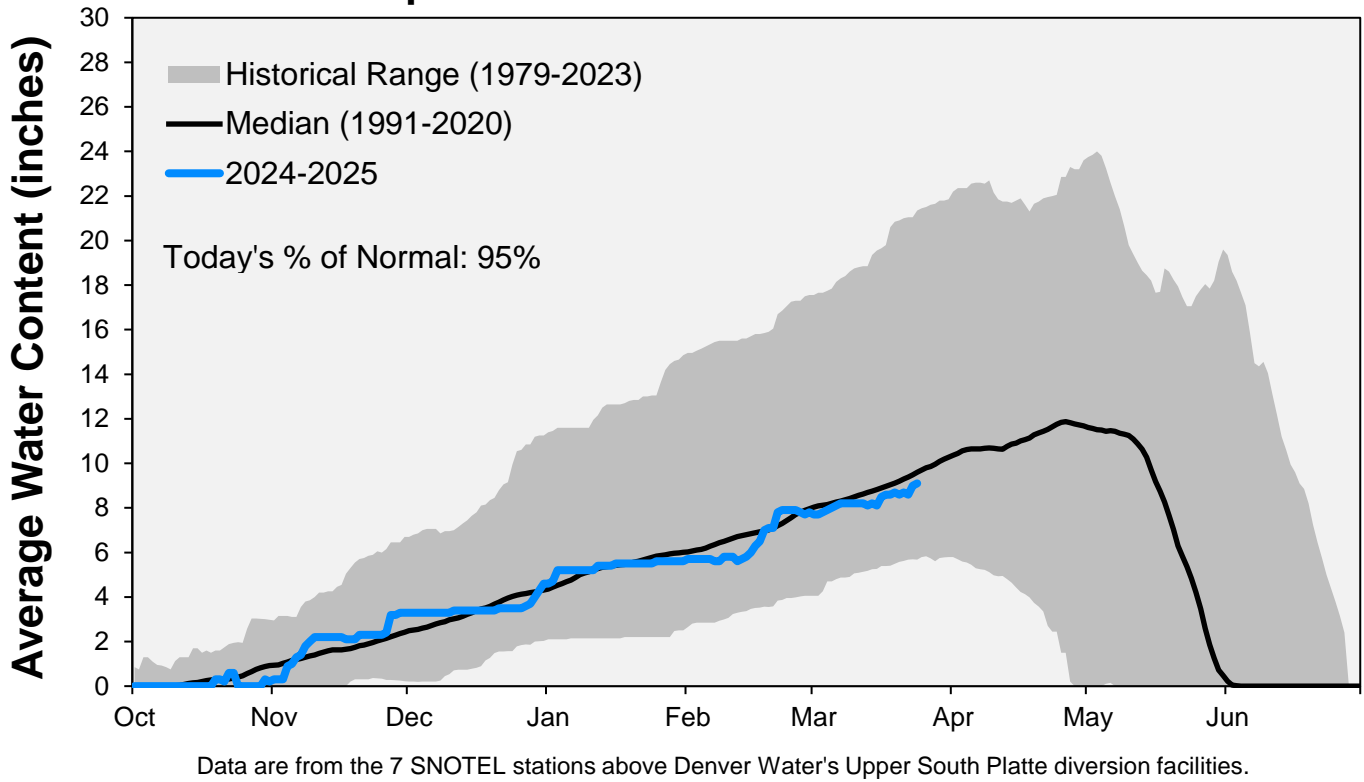
Note: Denver Water forecasts seasonal reservoir storage contents under dry future weather, normal future weather and wet future weather scenarios.

Gross Reservoir storage is limited to 29,938 acre feet in total storage during construction activities. The percent full figures are based on the normal usable capacity of 29,811 acre feet.

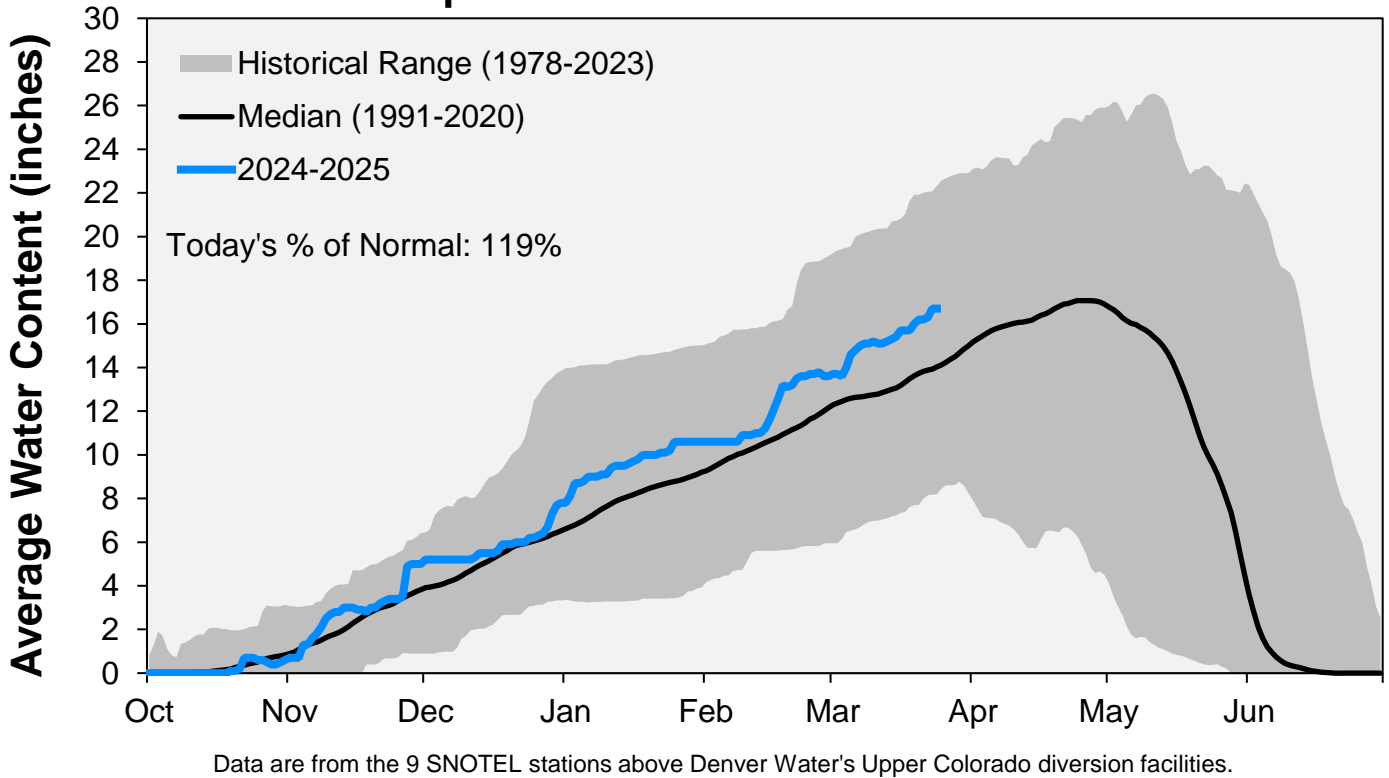
March Precipitation



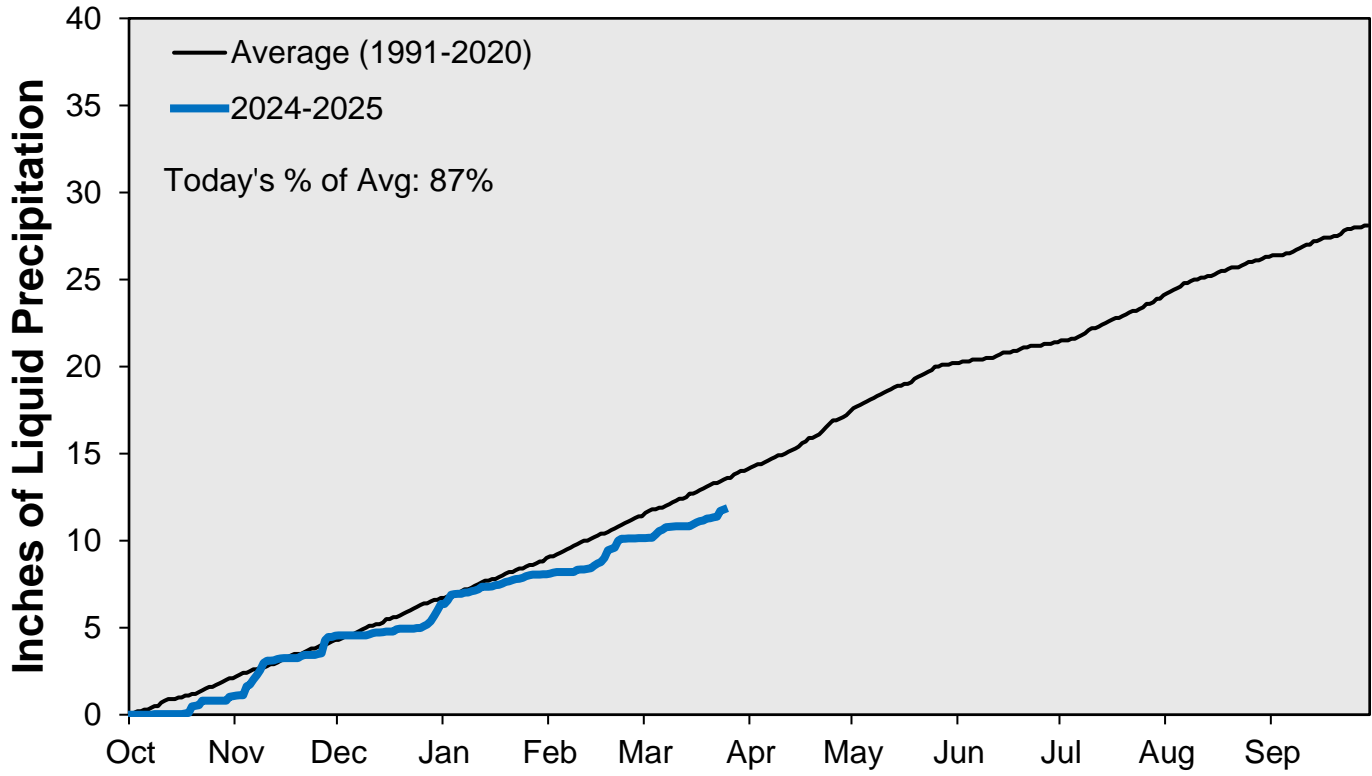
Snowpack: South Platte River Watershed



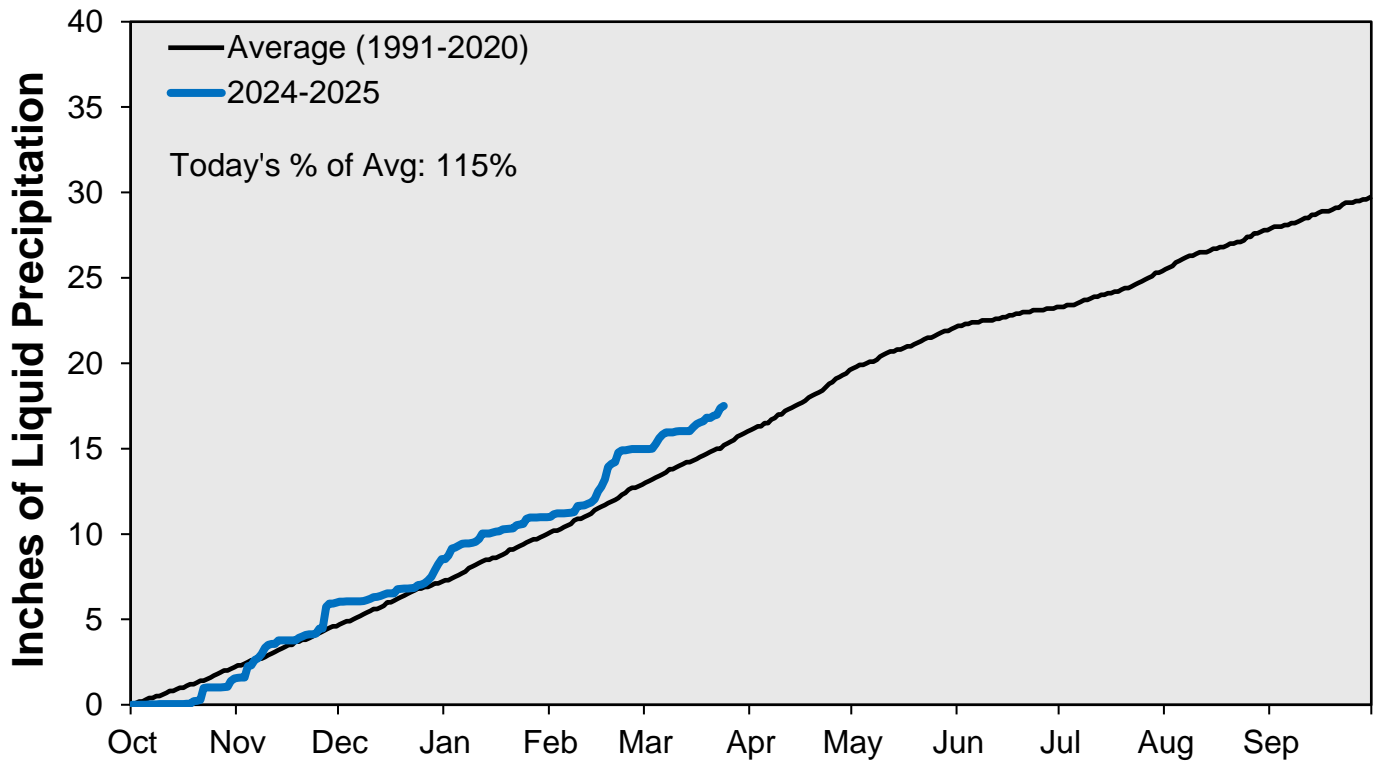
Snowpack: Colorado River Watershed



Cumulative Precipitation: South Platte River



Cumulative Precipitation: Colorado River



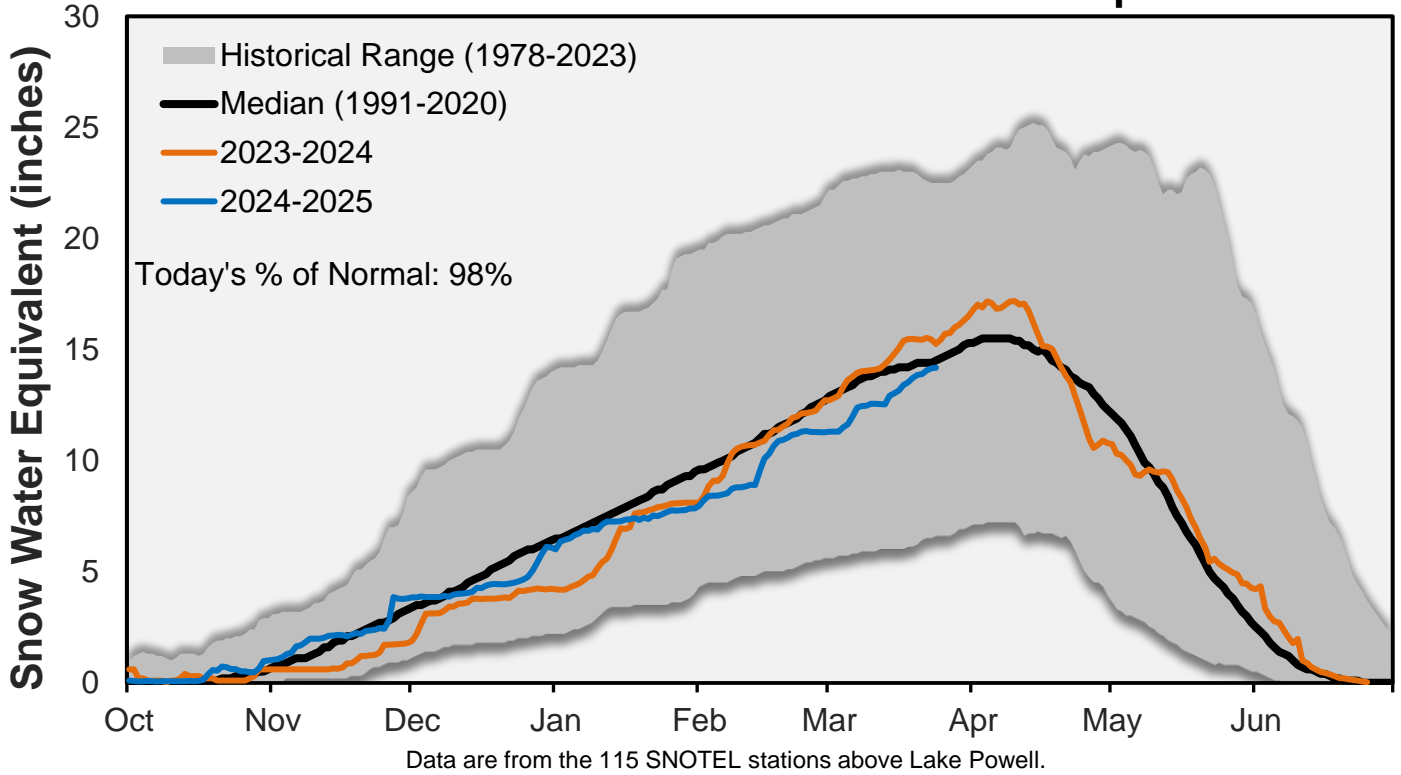
March 24, 2025

Denver Water Use and Reservoir Contents 2025													
	Jan	Feb	Mar	Apr	May	Jun	Jul	Aug	Sep	Oct	Nov	Dec	YTD-Avg
Predicted End-of-Month Supply Reservoir Contents (Full = 520,323 AF)	420,800												
Actual End-of-Month Supply Reservoir Contents (AF)	430,582	426,765											
Actual % Full	83%	82%											
Historical Median % Full	81%	80%	79%	79%	88%	98%	95%	92%	88%	85%	84%	83%	
2025 Expected Daily Use (MG)	105	105	104	119	175	269	304	289	266	167	108	102	105
Actual Daily Use (MG)	1	106	112	108									
	2	109	117	115									
	3	109	114	113									
	4	104	112	109									
	5	108	116	103									
	6	112	121	110									
	7	116	111	110									
	8	110	107	102									
	9	117	110	108									
D	10	110	108	112									
A	11	115	106	109									
Y	12	115	117	113									
	13	109	108	115									
O	14	123	105	108									
F	15	119	100	113									
	16	112	100	113									
M	17	110	108	106									
O	18	112	105	114									
N	19	115	100	106									
T	20	119	110	118									
H	21	123	115	121									
	22	115	111	111									
	23	118	108	114									
	24	117	114										
	25	120	106										
	26	118	110										
	27	118	115										
	28	100	118										
	29	115											
	30	125											
	31	113											
Monthly Average	114	110	111										112
% of 2025 Expected Daily Use	108%	105%	107%										107%

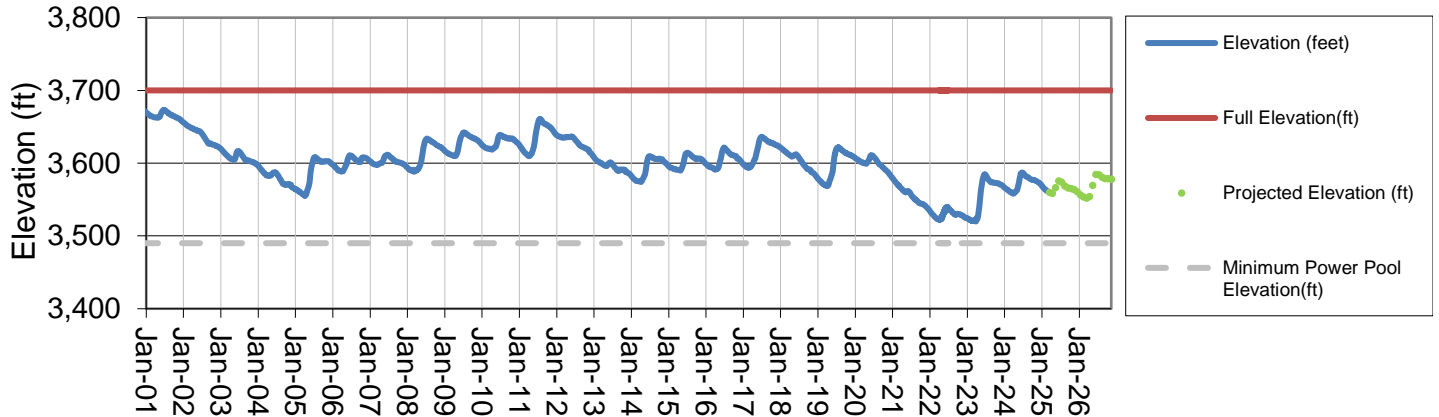
Notes: 1) "AF" denotes acre-feet. "MG" denotes million gallons. 2) Expected Daily Use is based on historical use with normal weather conditions. 3) The predicted end-of-month supply reservoir contents figures assume normal weather after March 10th, 2025. 4) The differences between predicted and actual end-of-month supply reservoir contents are the result of normal estimation error of daily use, supply, evaporation, carriage losses and raw water deliveries. 5) Predicted supply reservoir contents last updated on March 10th, 2025. 6) Daily water figures are subject to change.

Lake Powell Report*

Colorado River Above Lake Powell Snowpack



Lake Powell Elevation (2001-Current)



* Denver Water gets half of its water supply from the Colorado River and closely monitors conditions at Lake Powell and within the greater Colorado River Basin.