

Construction Report

July -2024



Toll Brothers – Santa Fe Park South



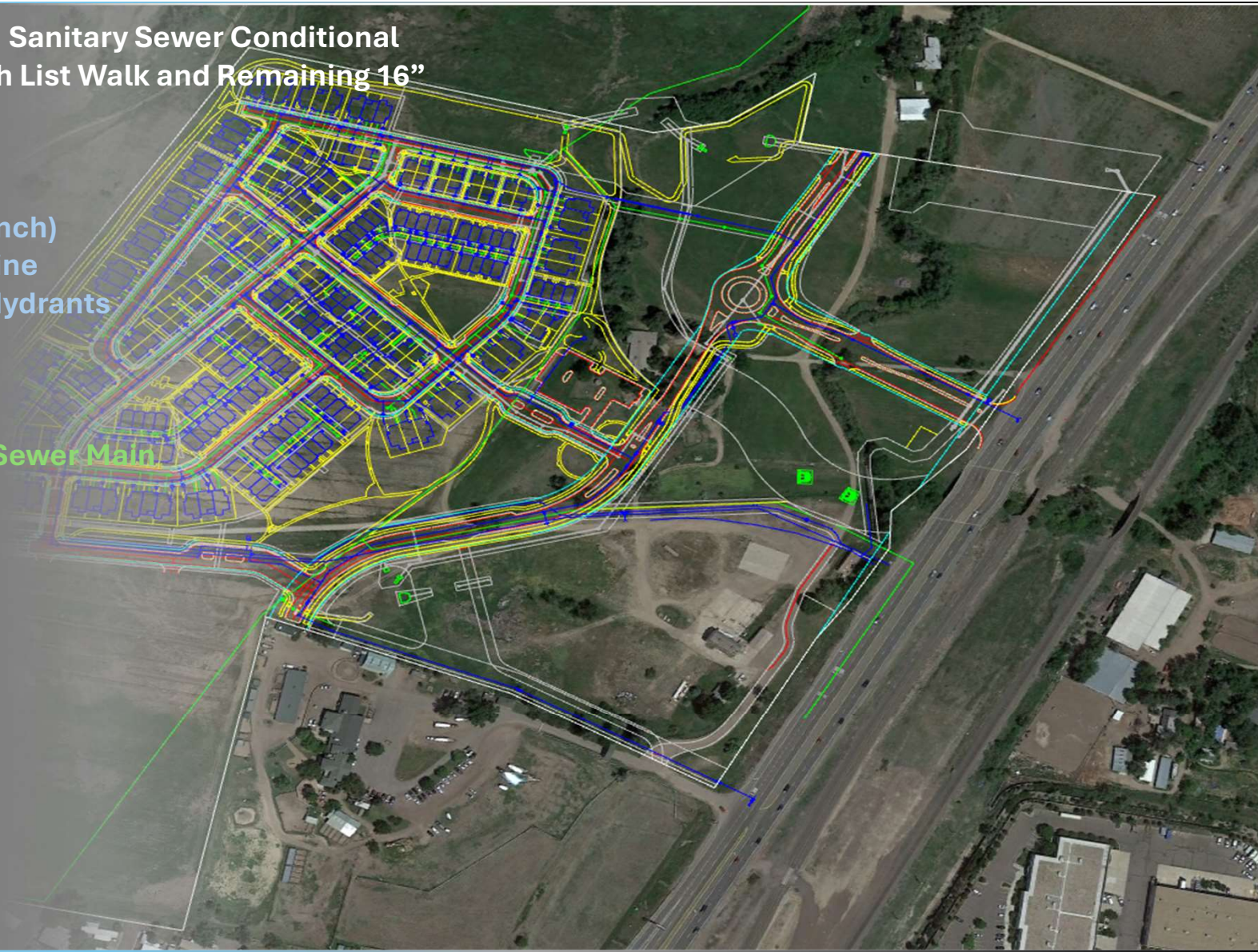
Project is nearing Water and Sanitary Sewer Conditional Acceptance – Pending Punch List Walk and Remaining 16” Waterline Installation

Water Quantities:

- 88 Gate Valves (4,6,8,12 Inch)
- 13,500 L.F. of PVC Waterline
- 16 A-403 Centurion Fire Hydrants

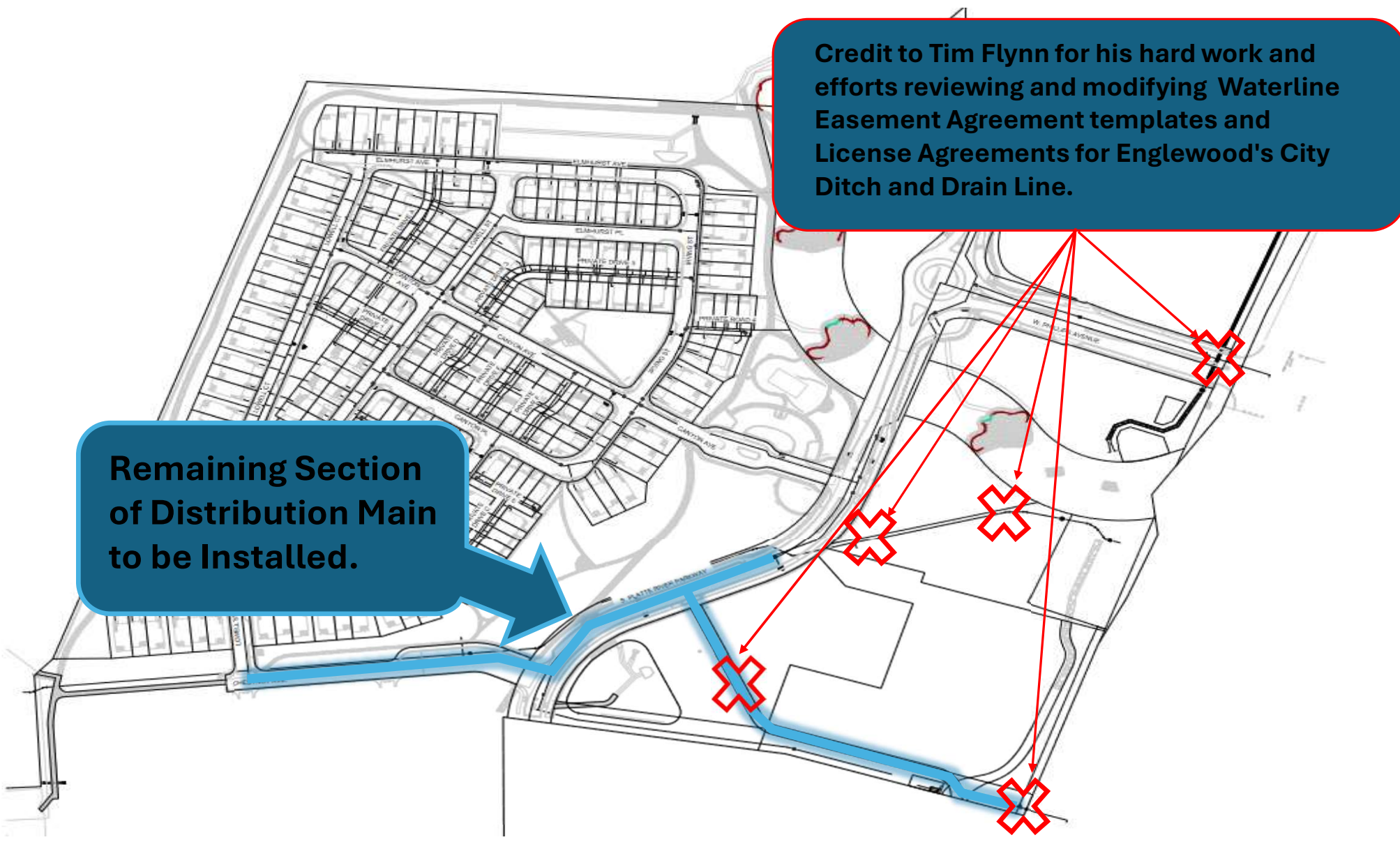
Sanitary Sewer Quantities:

- 70 San. Sewer Manholes
- 8,100 L.F. of 8” PVC San. Sewer Main



Credit to Tim Flynn for his hard work and efforts reviewing and modifying Waterline Easement Agreement templates and License Agreements for Englewood's City Ditch and Drain Line.

Remaining Section of Distribution Main to be Installed.



Questions?

07/24/2025

