



WATER WATCH REPORT

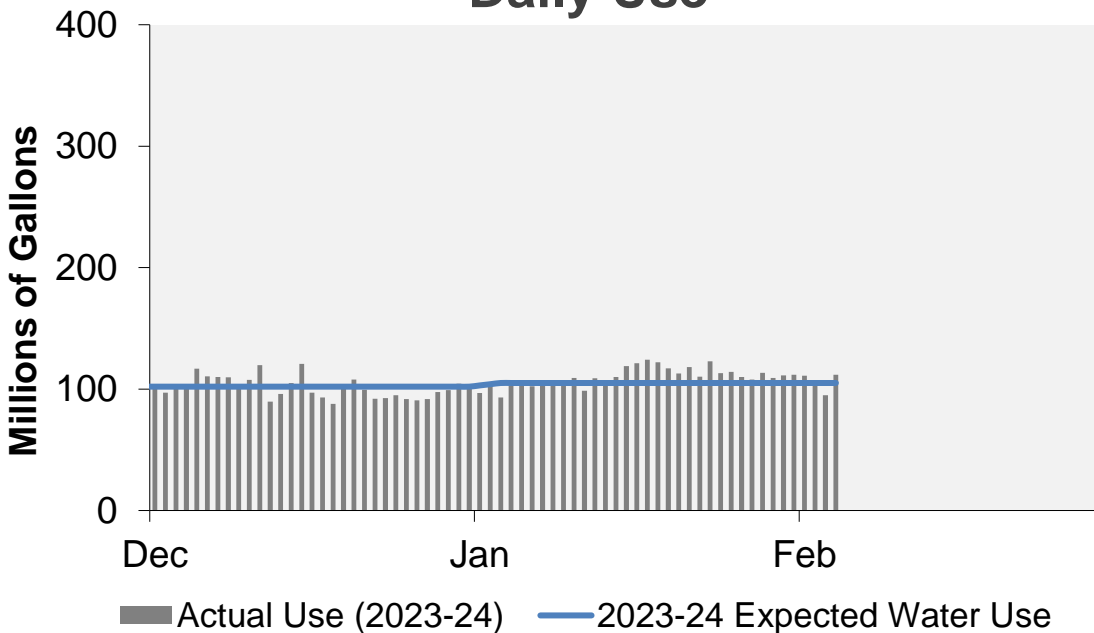
February 5, 2024

Supply Reservoir Contents

Reservoir	Capacity (acre-feet)		Current Usable Contents (acre-feet)	Percent Full		
	Total	Usable		Current	Last Year	Historical Median
Antero	20,122	20,067	20,130	100%	99%	99%
Eleven Mile	97,779	97,779	99,246	102%	102%	102%
Cheesman	79,064	79,064	68,431	87%	87%	83%
Marston	19,108	13,133	9,376	71%	55%	54%
Strontia Springs	7,863	7,163	5,739	80%	87%	93%
Chatfield	28,709	12,415	12,205	98%	70%	92%
Dillon	257,304	249,095	211,239	85%	81%	90%
Gross*	41,811	29,811	5,671	19%	34%	48%
Ralston	10,776	7,276	5,030	69%	47%	58%
Meadow Creek	5,370	4,520	-	0%	0%	12%
Total	567,906	520,323	437,066	84%	82%	81%

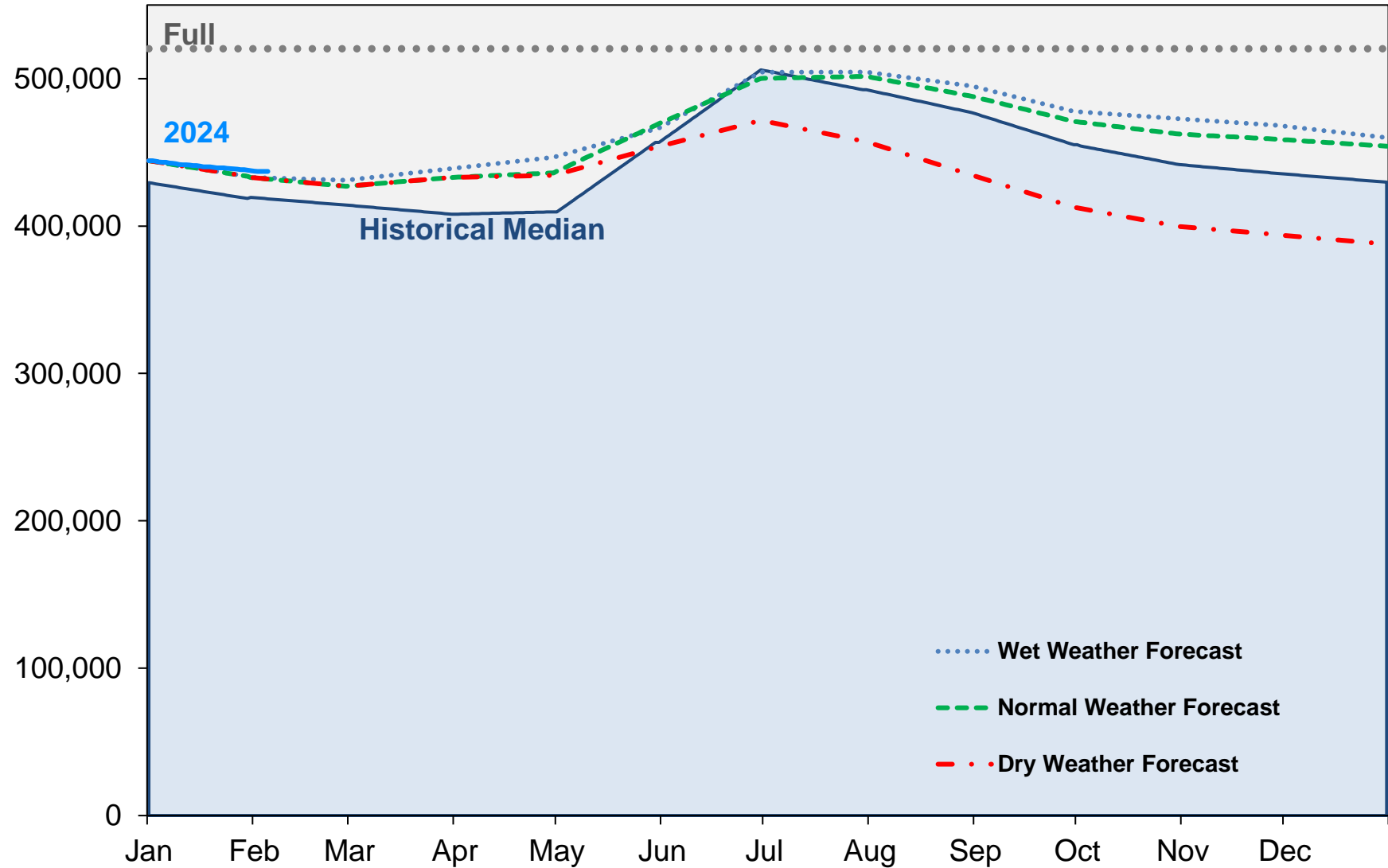
*Gross Reservoir storage is limited to 29,938 acre feet in total storage during construction activities. The percent full figures are based on the normal usable capacity of 29,811 acre feet.

Daily Use



Supply Reservoir Contents

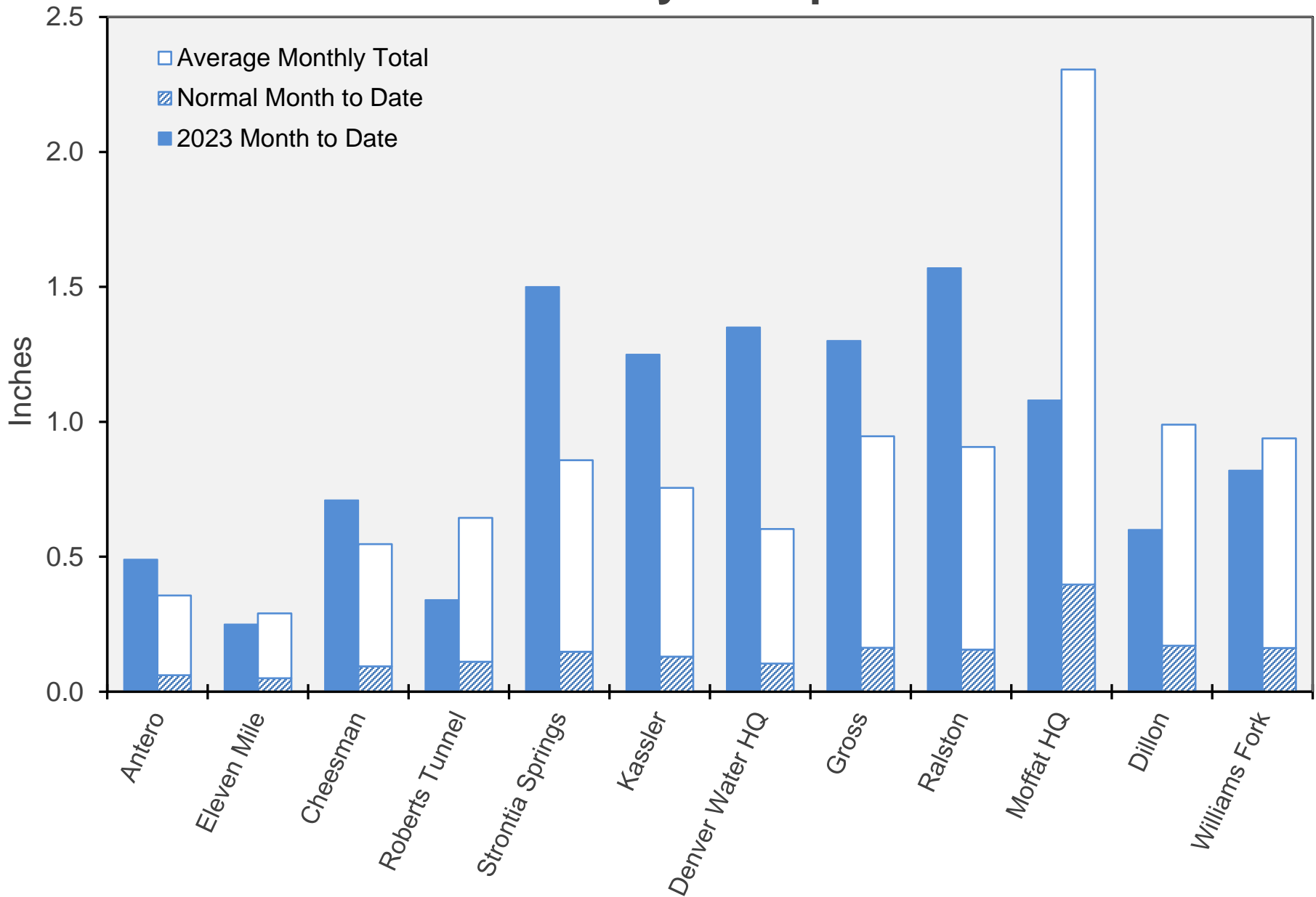
Acre-Feet



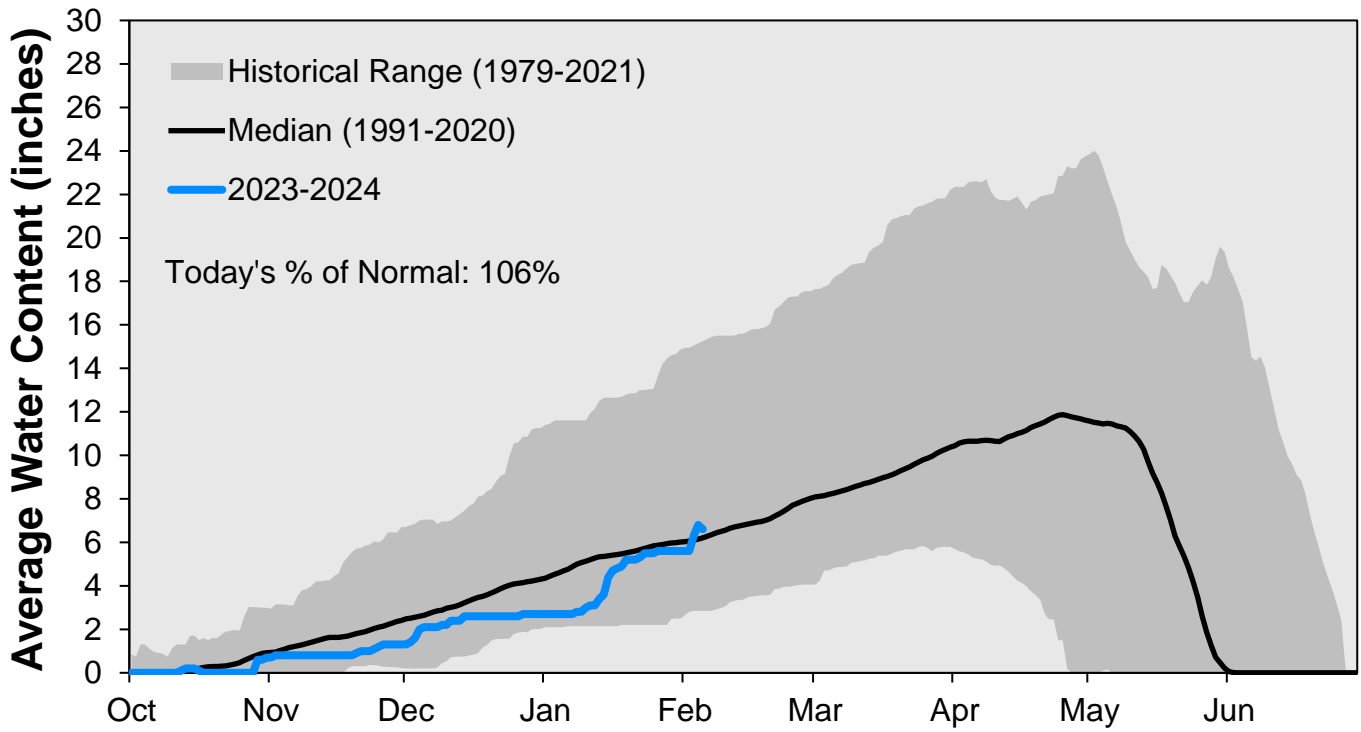
Note: Denver Water forecasts seasonal reservoir storage contents under dry future weather, normal future weather and wet future weather scenarios.

Gross Reservoir storage is limited to 29,938 acre feet in total storage during construction activities. The percent full figures are based on the normal usable capacity of 29,811 acre feet.

February Precipitation

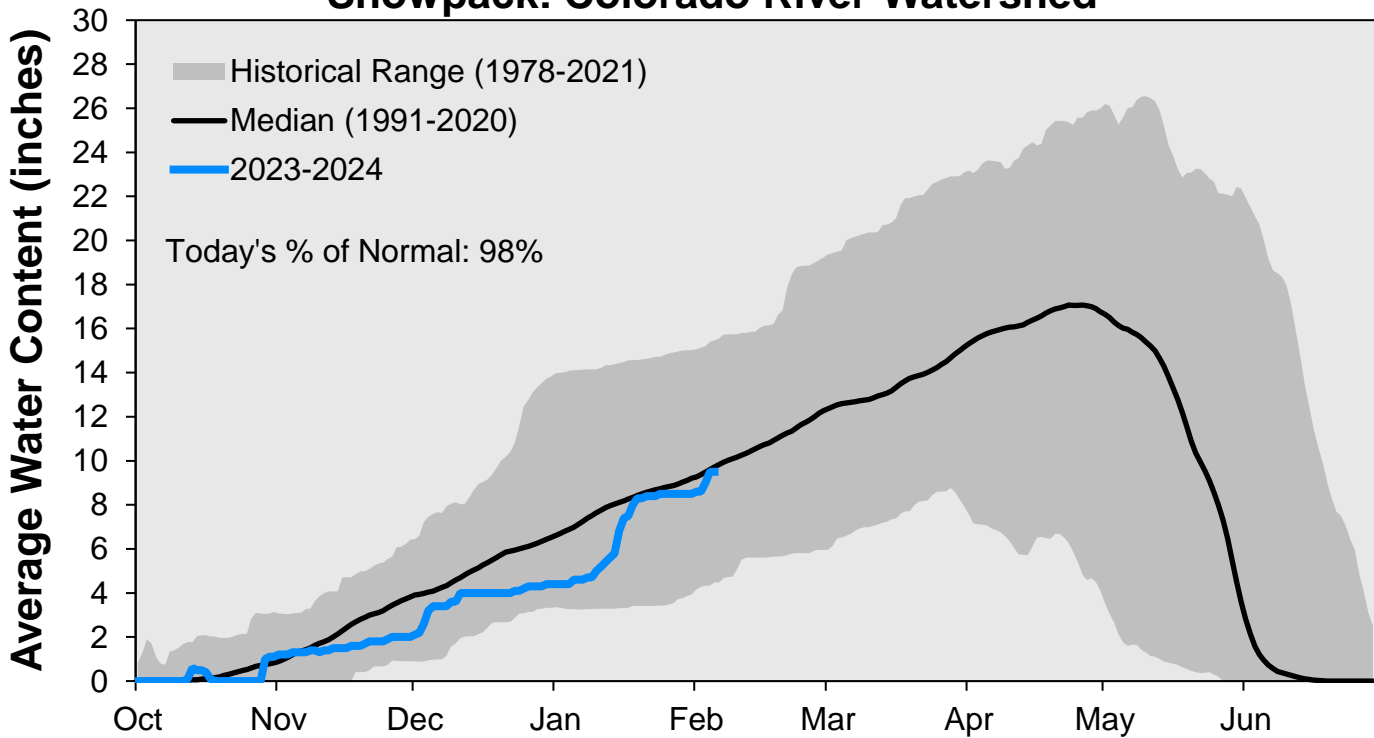


Snowpack: South Platte River Watershed



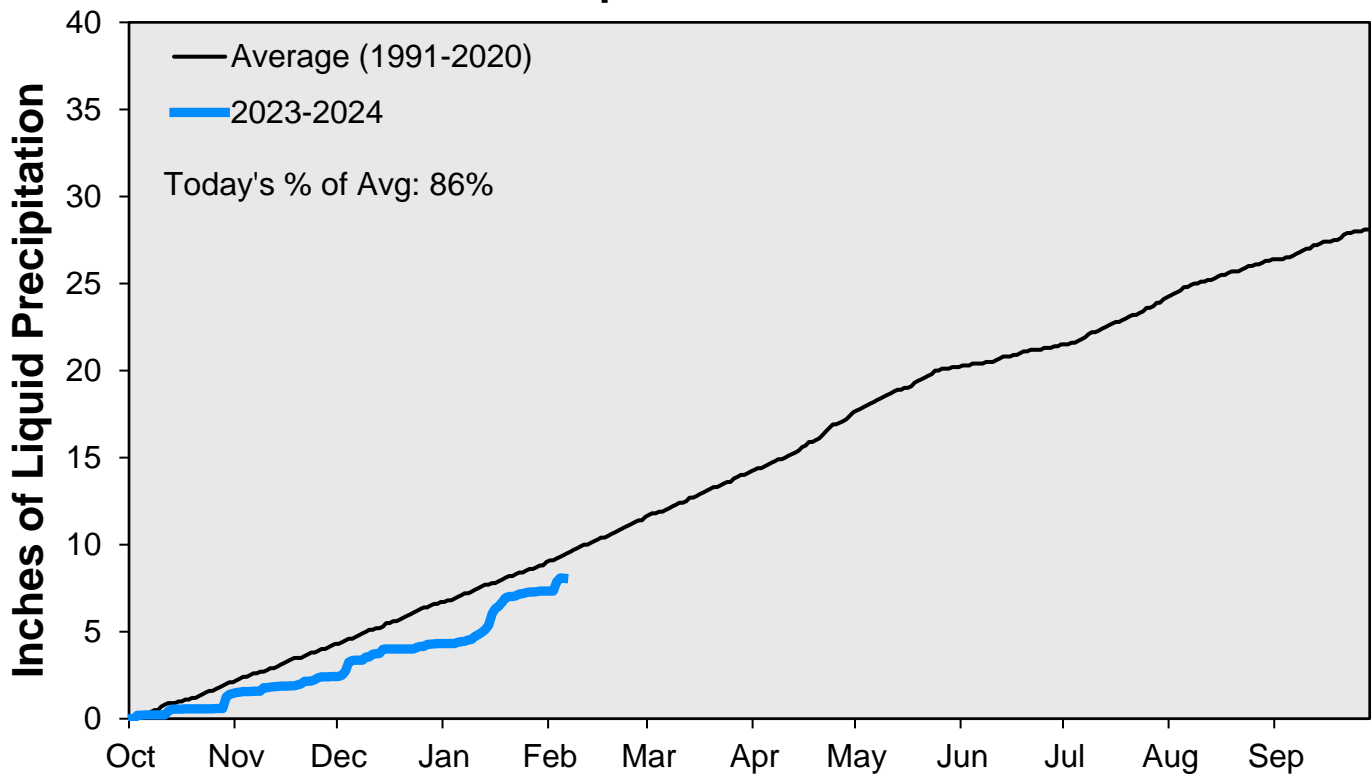
Data are from the 7 SNOTEL stations above Denver Water's Upper South Platte diversion facilities.

Snowpack: Colorado River Watershed

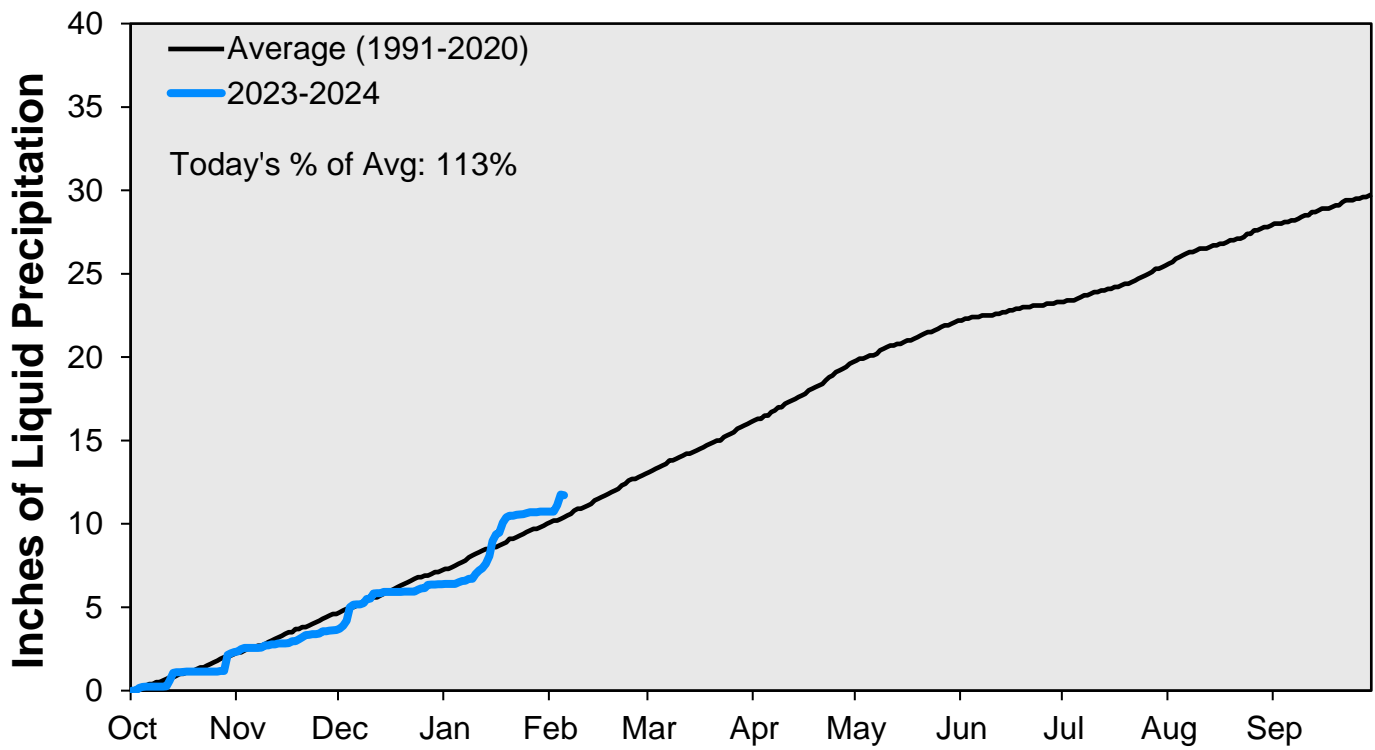


Data are from the 9 SNOTEL stations above Denver Water's Upper Colorado diversion facilities.

Cumulative Precipitation: South Platte River



Cumulative Precipitation: Colorado River



Data are from the 7 SNOTEL stations above Denver Water's Upper Colorado diversion facilities.

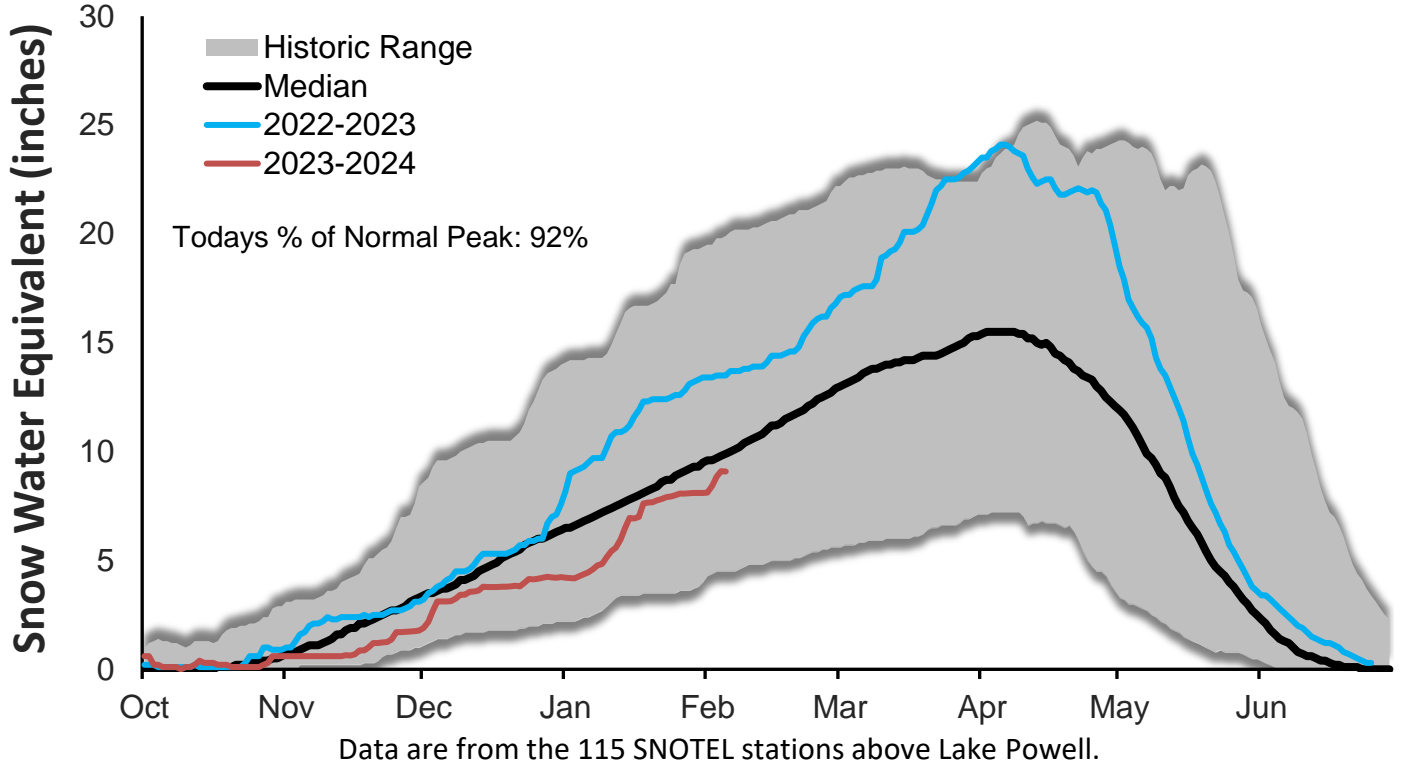
February 5, 2024

Denver Water Use and Reservoir Contents 2024													
	Jan	Feb	Mar	Apr	May	Jun	Jul	Aug	Sep	Oct	Nov	Dec	YTD-Avg
Predicted End-of-Month Supply Reservoir Contents (Full = 518,449 AF)	426,400												
Actual End-of-Month Supply Reservoir Contents (AF)	437,644												
Actual % Full	84%												
Historical Median % Full	81%	80%	79%	79%	88%	98%	95%	92%	88%	85%	84%	83%	
2024 Expected Daily Use (MG)	105	105	104	120	190	267	312	304	277	170	111	105	105
Actual Daily Use (MG)	1	97	111										
	2	105	104										
	3	93	95										
	4	103	112										
	5	105											
	6	102											
	7	107											
	8	103											
	9	106											
	D 10	109											
	A 11	98											
	Y 12	109											
	13	107											
	O 14	110											
	F 15	119											
	16	121											
	M 17	124											
	O 18	122											
	N 19	117											
	T 20	113											
	H 21	118											
	22	110											
	23	123											
	24	113											
	25	114											
	26	110											
	27	108											
	28	113											
	29	109											
	30	111											
	31	112											
Monthly Average	110	105											110
% of 2023 Expected Daily Use	105%	100%											104%

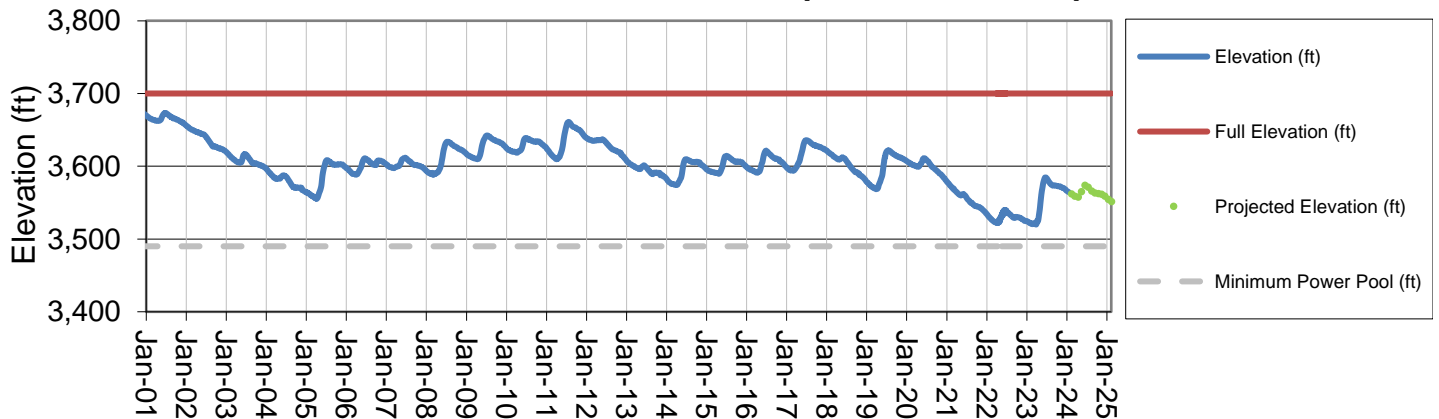
Notes: 1) "AF" denotes acre-feet. "MG" denotes million gallons. 2) Expected Daily Use is based on historical use with normal weather conditions. 3) The predicted end-of-month supply reservoir contents figures assume normal weather February 5th, 2024. 4) The differences between predicted and actual end-of-month supply reservoir contents are the result of normal estimation error of daily use, supply, evaporation, carriage losses and raw water deliveries. 5) Predicted supply reservoir contents last updated on February 5th, 2024. 6) Daily water figures are subject to change.

Lake Powell Report*

Colorado River Above Lake Powell Snowpack



Lake Powell Elevation (2001-Current)



* Denver Water gets half of its water supply from the Colorado River and closely monitors conditions at Lake Powell and within the greater Colorado River Basin.