



# WATER WATCH REPORT

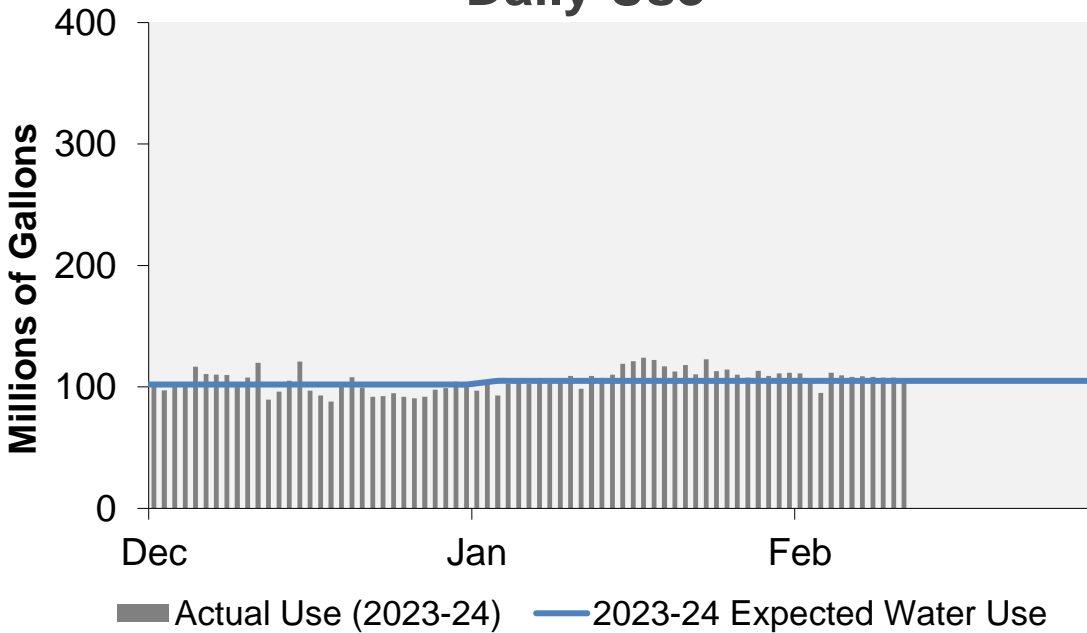
February 12, 2024

## Supply Reservoir Contents

| Reservoir        | Capacity       |                | Current Usable<br>Contents<br>(acre-feet) | Percent Full |              |                      |
|------------------|----------------|----------------|-------------------------------------------|--------------|--------------|----------------------|
|                  | (acre-feet)    |                |                                           | Current      | Last<br>Year | Historical<br>Median |
|                  | Total          | Usable         |                                           |              |              |                      |
| Antero           | 20,122         | 20,067         | 20,195                                    | 101%         | 99%          | 99%                  |
| Eleven Mile      | 97,779         | 97,779         | 99,315                                    | 102%         | 102%         | 102%                 |
| Cheesman         | 79,064         | 79,064         | 67,634                                    | 86%          | 87%          | 83%                  |
| Marston          | 19,108         | 13,133         | 9,306                                     | 71%          | 55%          | 53%                  |
| Strontia Springs | 7,863          | 7,163          | 5,768                                     | 81%          | 88%          | 93%                  |
| Chatfield        | 28,709         | 12,415         | 12,236                                    | 99%          | 74%          | 93%                  |
| Dillon           | 257,304        | 249,095        | 210,846                                   | 85%          | 81%          | 89%                  |
| Gross*           | 41,811         | 29,811         | 5,768                                     | 19%          | 26%          | 46%                  |
| Ralston          | 10,776         | 7,276          | 4,840                                     | 67%          | 72%          | 56%                  |
| Meadow Creek     | 5,370          | 4,520          | -                                         | 0%           | 0%           | 12%                  |
| <b>Total</b>     | <b>567,906</b> | <b>520,323</b> | <b>435,909</b>                            | <b>84%</b>   | <b>82%</b>   | <b>80%</b>           |

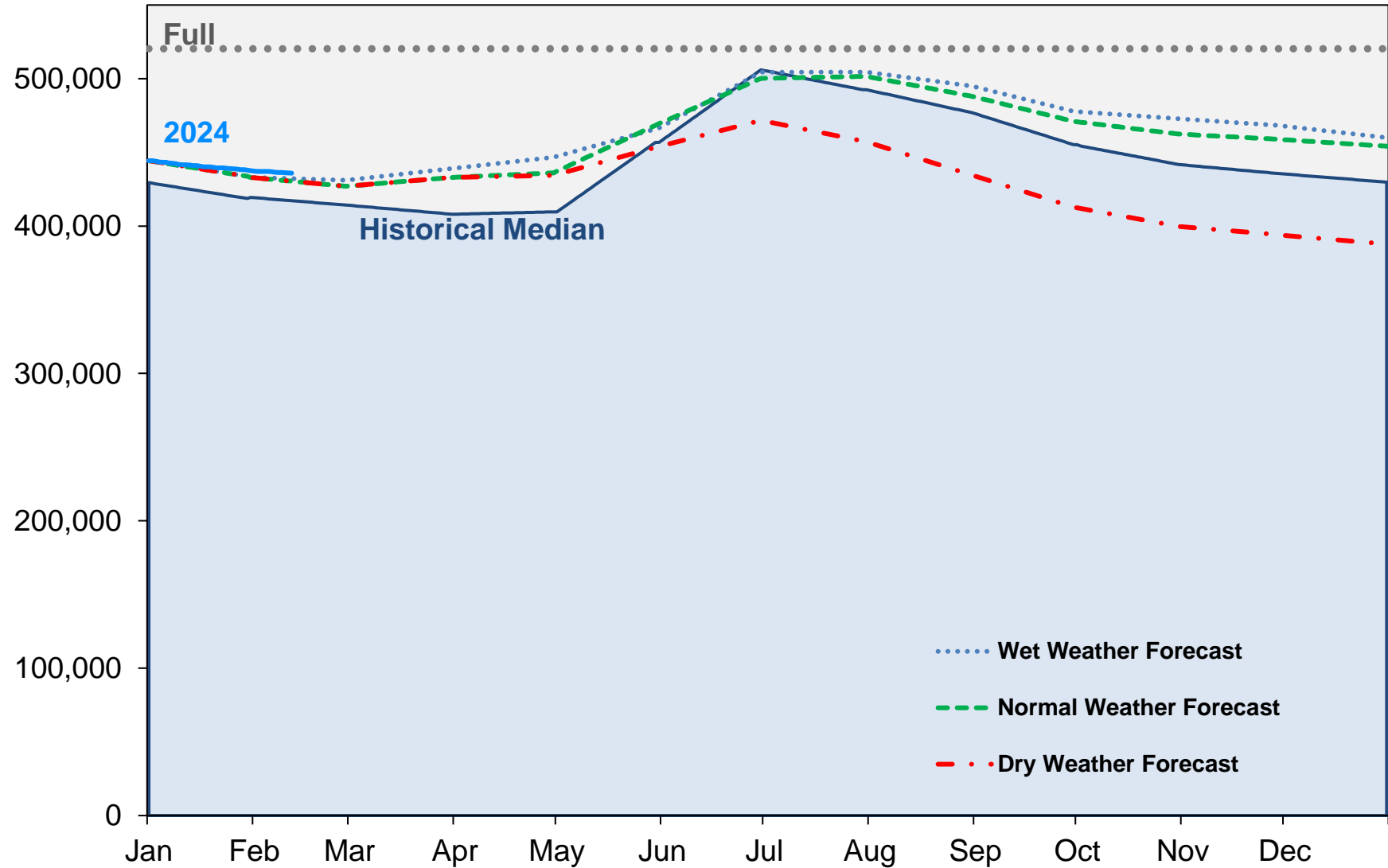
\*Gross Reservoir storage is limited to 29,938 acre feet in total storage during construction activities. The percent full figures are based on the normal usable capacity of 29,811 acre feet.

## Daily Use



# Supply Reservoir Contents

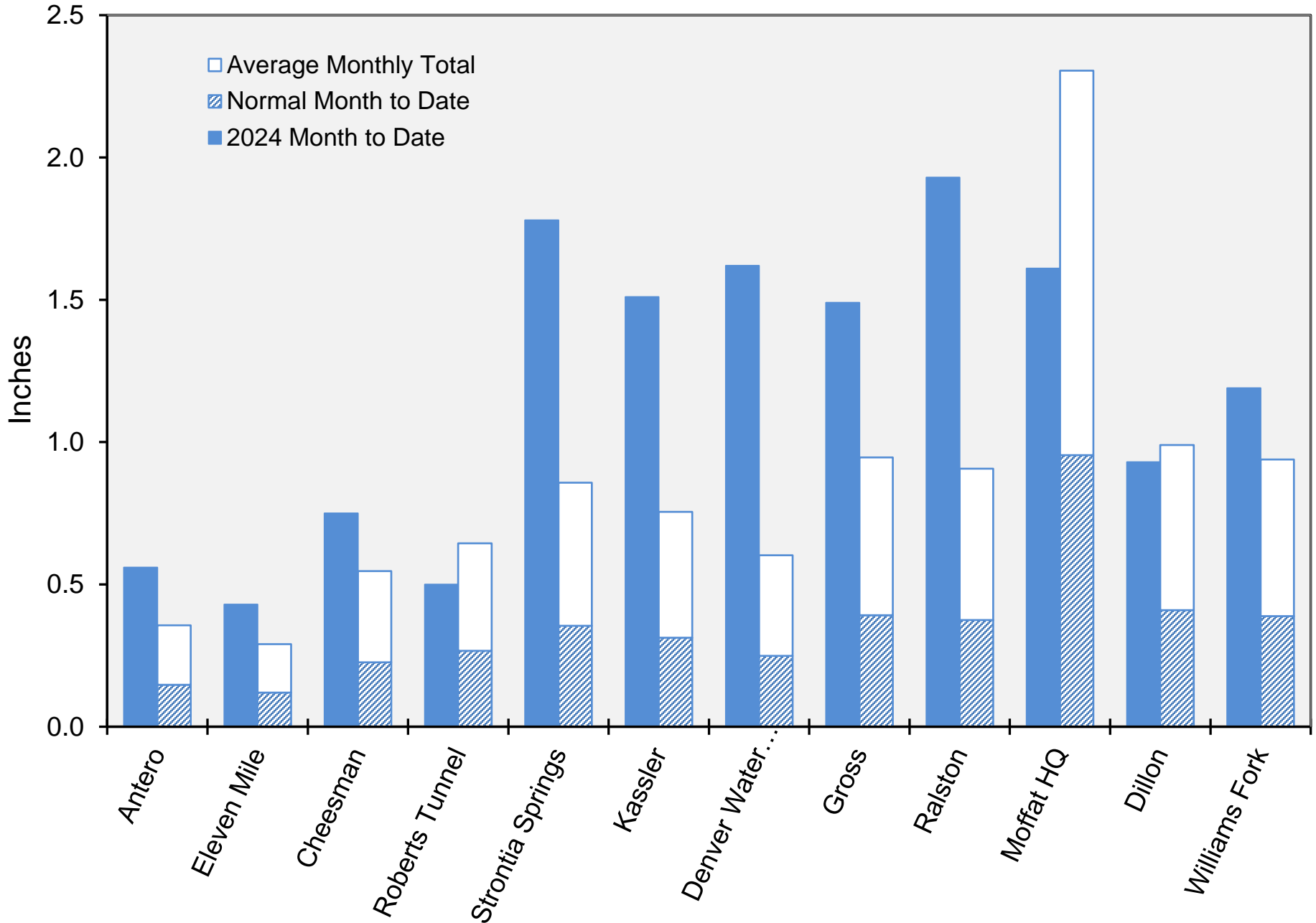
Acre-Feet



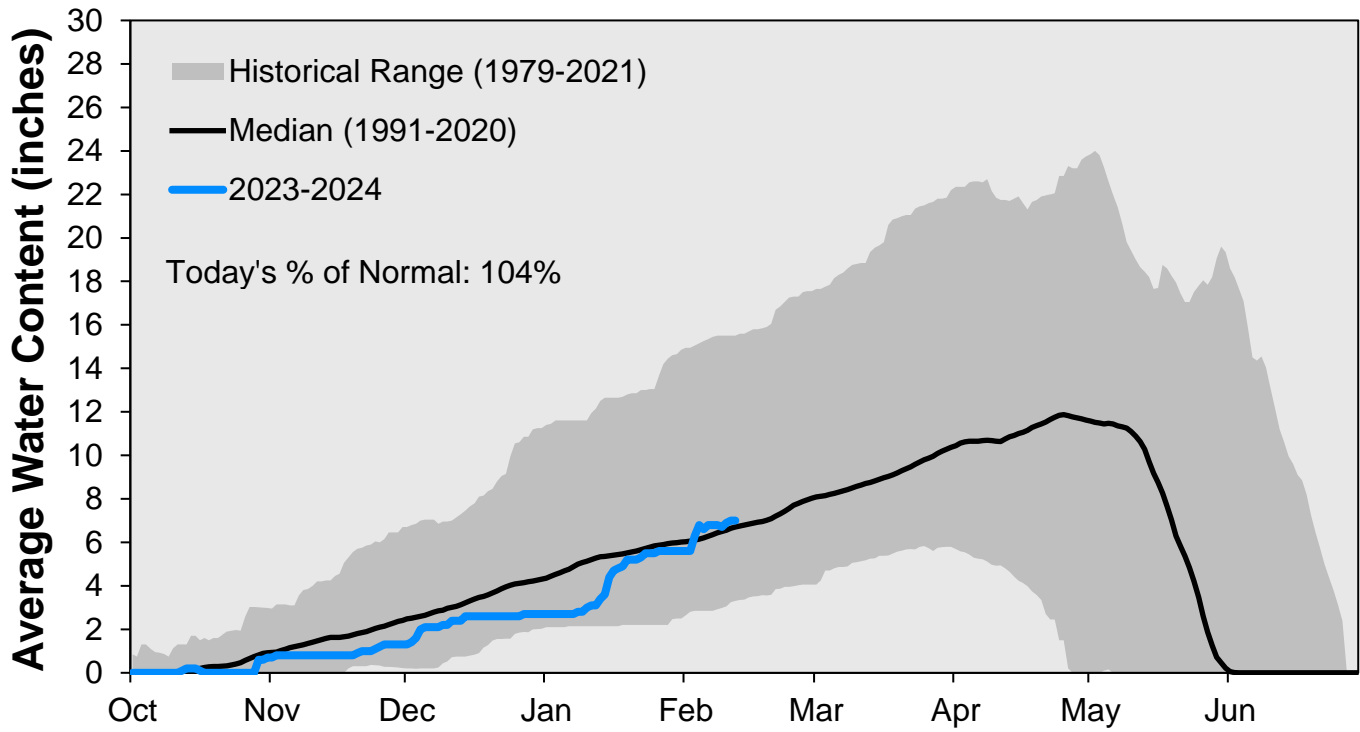
Note: Denver Water forecasts seasonal reservoir storage contents under dry future weather, normal future weather and wet future weather scenarios.

Gross Reservoir storage is limited to 29,938 acre feet in total storage during construction activities. The percent full figures are based on the normal usable capacity of 29,811 acre feet.

## February Precipitation

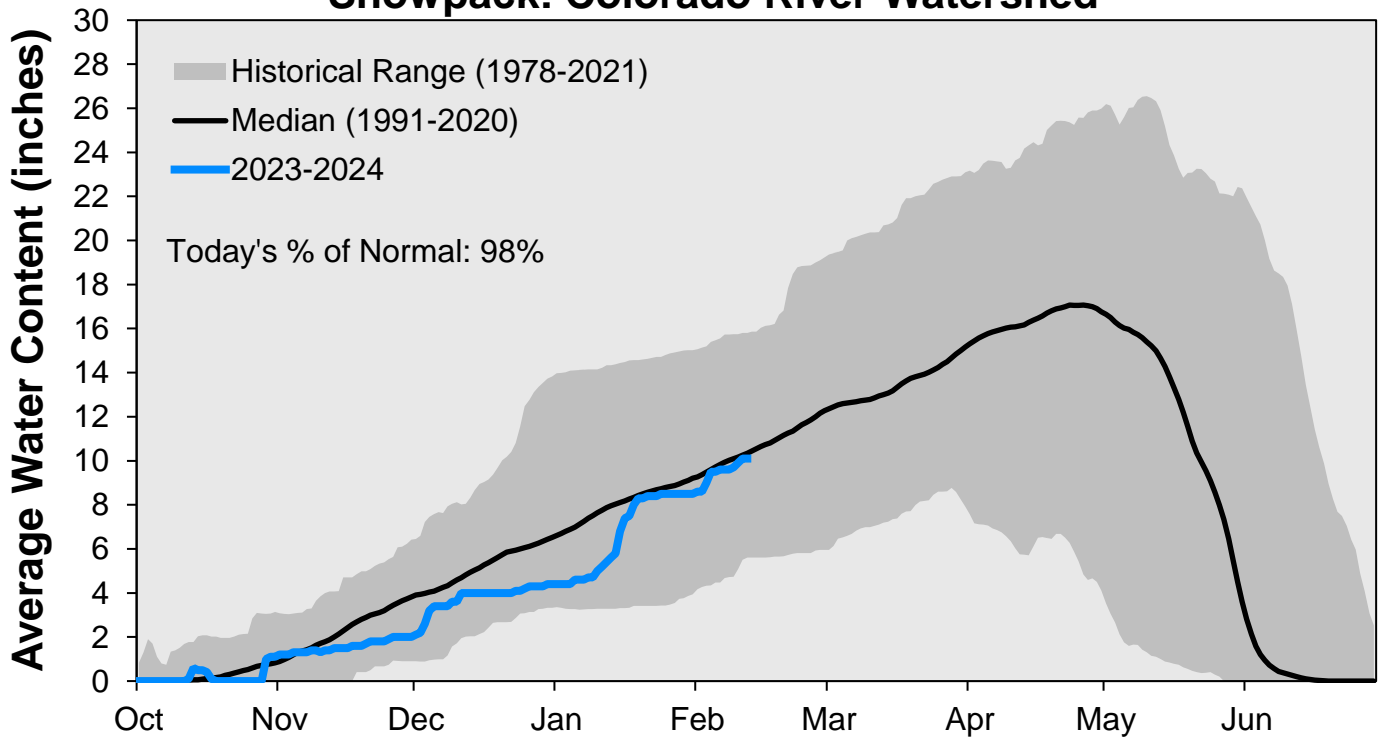


### Snowpack: South Platte River Watershed



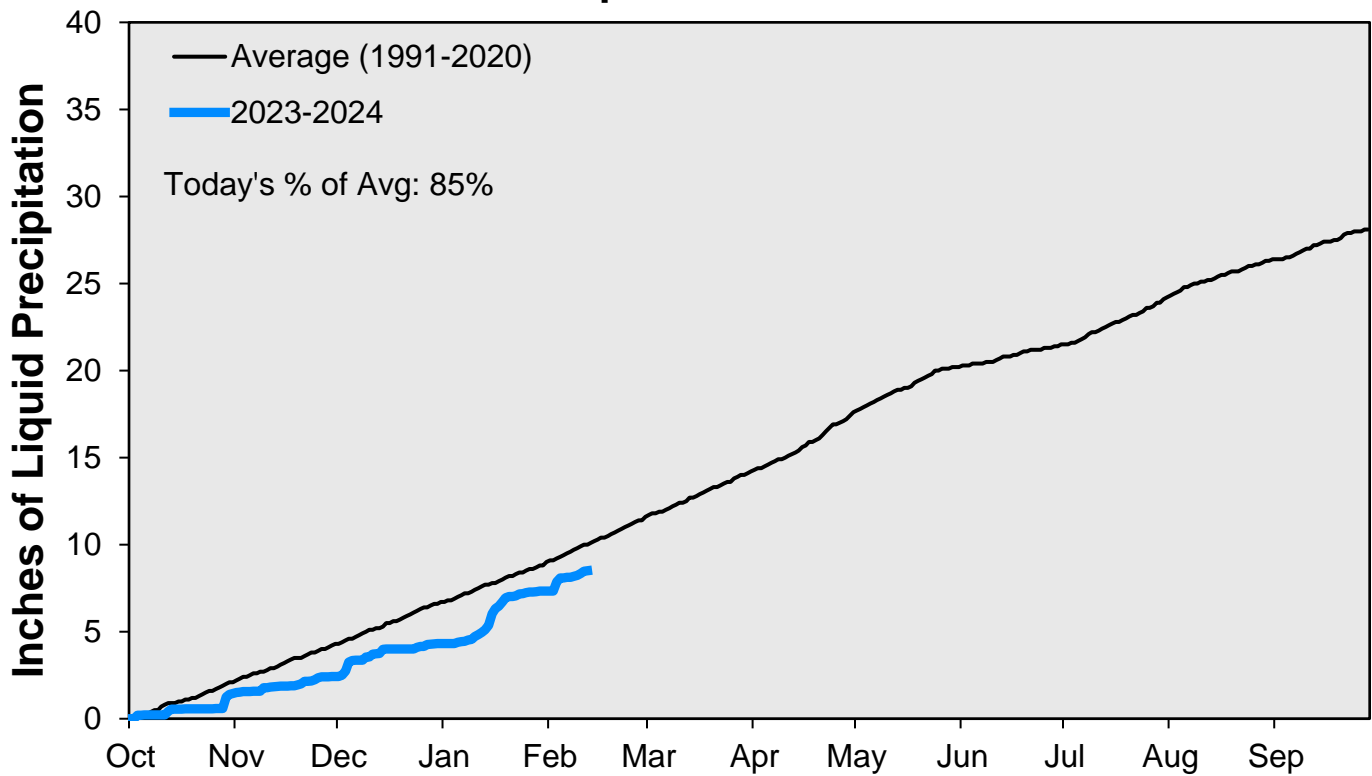
Data are from the 7 SNOTEL stations above Denver Water's Upper South Platte diversion facilities.

### Snowpack: Colorado River Watershed

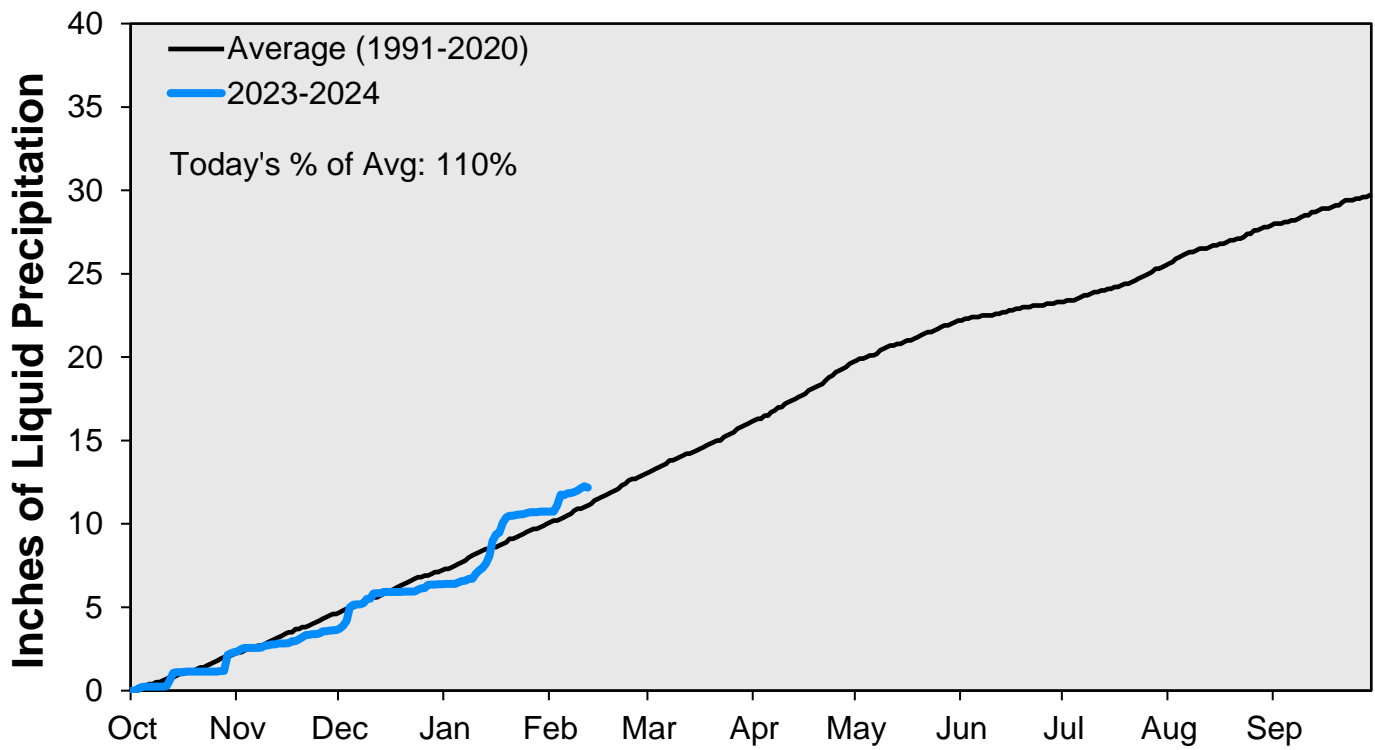


Data are from the 9 SNOTEL stations above Denver Water's Upper Colorado diversion facilities.

### Cumulative Precipitation: South Platte River



### Cumulative Precipitation: Colorado River



Data are from the 7 SNOTEL stations above Denver Water's Upper Colorado diversion facilities.

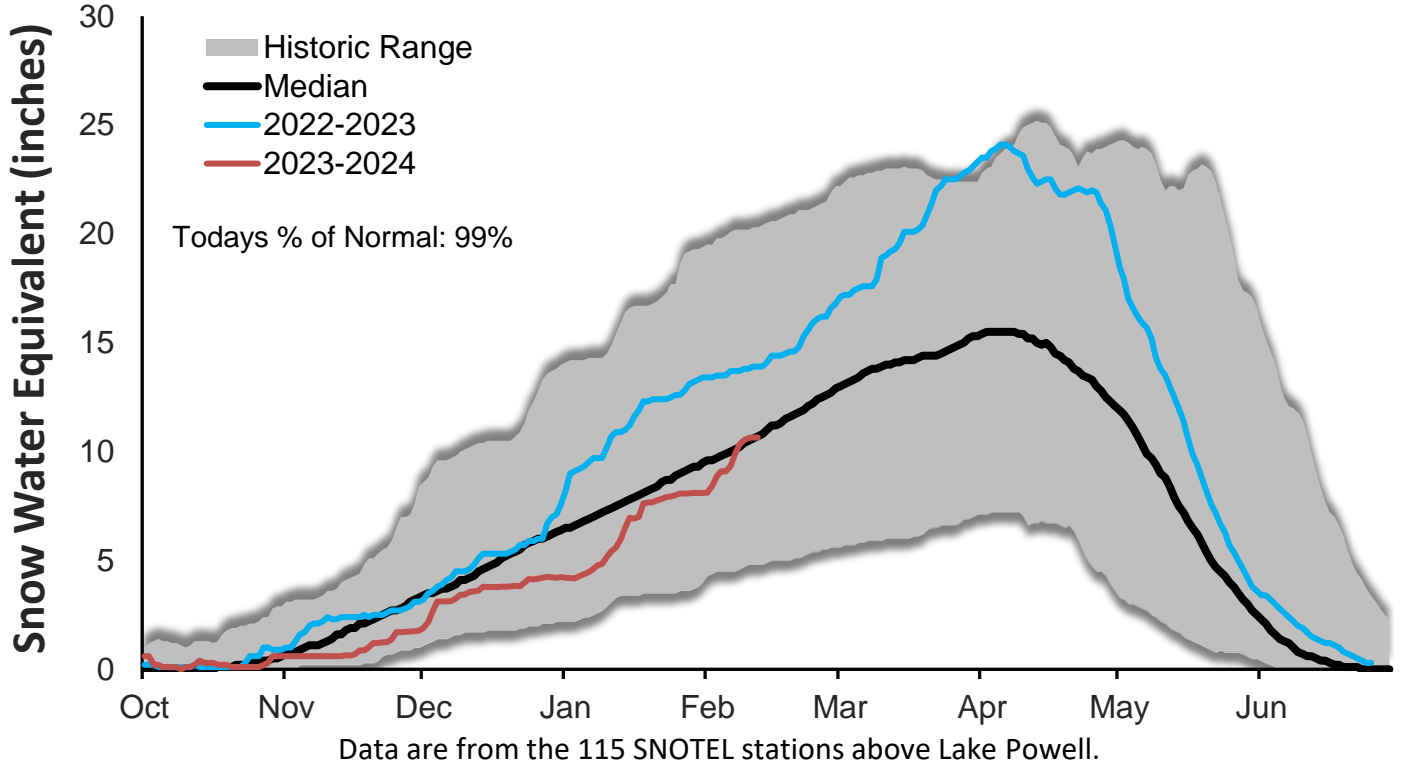
February 12, 2024

| Denver Water Use and Reservoir Contents 2024                         |         |      |     |     |     |     |     |     |     |     |     |     |         |
|----------------------------------------------------------------------|---------|------|-----|-----|-----|-----|-----|-----|-----|-----|-----|-----|---------|
|                                                                      | Jan     | Feb  | Mar | Apr | May | Jun | Jul | Aug | Sep | Oct | Nov | Dec | YTD-Avg |
| Predicted End-of-Month Supply Reservoir Contents (Full = 518,449 AF) | 426,400 |      |     |     |     |     |     |     |     |     |     |     |         |
| Actual End-of-Month Supply Reservoir Contents (AF)                   | 437,644 |      |     |     |     |     |     |     |     |     |     |     |         |
| Actual % Full                                                        | 84%     |      |     |     |     |     |     |     |     |     |     |     |         |
| Historical Median % Full                                             | 81%     | 80%  | 79% | 79% | 88% | 98% | 95% | 92% | 88% | 85% | 84% | 83% |         |
| 2024 Expected Daily Use (MG)                                         | 105     | 105  | 104 | 120 | 190 | 267 | 312 | 304 | 277 | 170 | 111 | 105 | 105     |
| Actual Daily Use (MG)                                                | 1       | 97   | 111 |     |     |     |     |     |     |     |     |     |         |
|                                                                      | 2       | 105  | 104 |     |     |     |     |     |     |     |     |     |         |
|                                                                      | 3       | 93   | 95  |     |     |     |     |     |     |     |     |     |         |
|                                                                      | 4       | 103  | 112 |     |     |     |     |     |     |     |     |     |         |
|                                                                      | 5       | 105  | 109 |     |     |     |     |     |     |     |     |     |         |
|                                                                      | 6       | 102  | 108 |     |     |     |     |     |     |     |     |     |         |
|                                                                      | 7       | 107  | 109 |     |     |     |     |     |     |     |     |     |         |
|                                                                      | 8       | 103  | 108 |     |     |     |     |     |     |     |     |     |         |
|                                                                      | 9       | 106  | 108 |     |     |     |     |     |     |     |     |     |         |
|                                                                      | D 10    | 109  | 108 |     |     |     |     |     |     |     |     |     |         |
|                                                                      | A 11    | 98   | 106 |     |     |     |     |     |     |     |     |     |         |
|                                                                      | Y 12    | 109  |     |     |     |     |     |     |     |     |     |     |         |
|                                                                      | 13      | 107  |     |     |     |     |     |     |     |     |     |     |         |
|                                                                      | O 14    | 110  |     |     |     |     |     |     |     |     |     |     |         |
|                                                                      | F 15    | 119  |     |     |     |     |     |     |     |     |     |     |         |
|                                                                      | 16      | 121  |     |     |     |     |     |     |     |     |     |     |         |
|                                                                      | M 17    | 124  |     |     |     |     |     |     |     |     |     |     |         |
|                                                                      | O 18    | 122  |     |     |     |     |     |     |     |     |     |     |         |
|                                                                      | N 19    | 117  |     |     |     |     |     |     |     |     |     |     |         |
|                                                                      | T 20    | 113  |     |     |     |     |     |     |     |     |     |     |         |
|                                                                      | H 21    | 118  |     |     |     |     |     |     |     |     |     |     |         |
|                                                                      | 22      | 110  |     |     |     |     |     |     |     |     |     |     |         |
|                                                                      | 23      | 123  |     |     |     |     |     |     |     |     |     |     |         |
|                                                                      | 24      | 113  |     |     |     |     |     |     |     |     |     |     |         |
|                                                                      | 25      | 114  |     |     |     |     |     |     |     |     |     |     |         |
|                                                                      | 26      | 110  |     |     |     |     |     |     |     |     |     |     |         |
|                                                                      | 27      | 108  |     |     |     |     |     |     |     |     |     |     |         |
|                                                                      | 28      | 113  |     |     |     |     |     |     |     |     |     |     |         |
|                                                                      | 29      | 109  |     |     |     |     |     |     |     |     |     |     |         |
|                                                                      | 30      | 111  |     |     |     |     |     |     |     |     |     |     |         |
|                                                                      | 31      | 112  |     |     |     |     |     |     |     |     |     |     |         |
| Monthly Average                                                      | 110     | 107  |     |     |     |     |     |     |     |     |     |     | 109     |
| % of 2023 Expected Daily Use                                         | 105%    | 102% |     |     |     |     |     |     |     |     |     |     | 104%    |

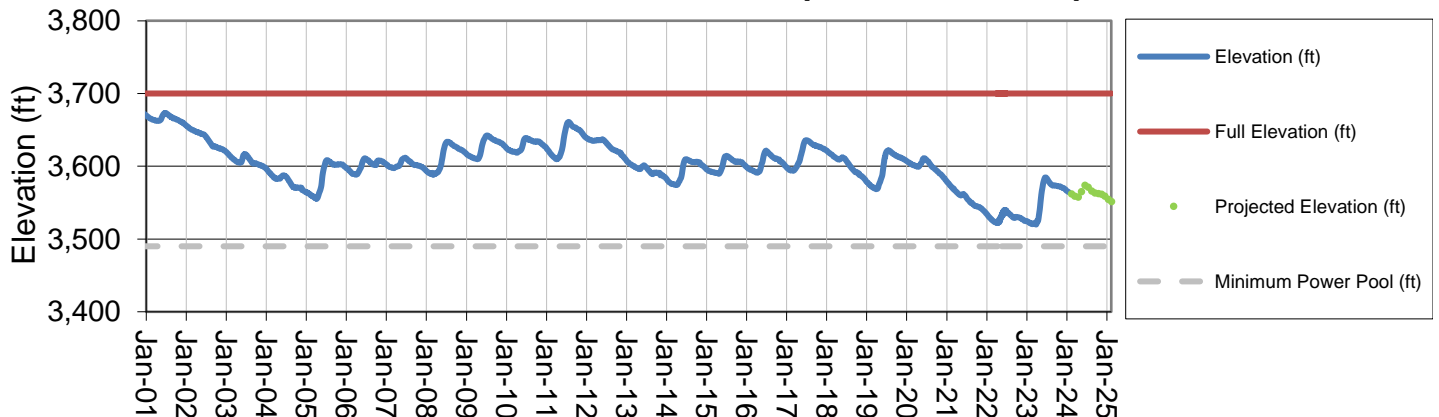
Notes: 1) "AF" denotes acre-feet. "MG" denotes million gallons. 2) Expected Daily Use is based on historical use with normal weather conditions. 3) The predicted end-of-month supply reservoir contents figures assume normal weather February 5<sup>th</sup>, 2024. 4) The differences between predicted and actual end-of-month supply reservoir contents are the result of normal estimation error of daily use, supply, evaporation, carriage losses and raw water deliveries. 5) Predicted supply reservoir contents last updated on February 5<sup>th</sup>, 2024. 6) Daily water figures are subject to change.

# Lake Powell Report\*

## Colorado River Above Lake Powell Snowpack



## Lake Powell Elevation (2001-Current)



\* Denver Water gets half of its water supply from the Colorado River and closely monitors conditions at Lake Powell and within the greater Colorado River Basin.