



## WATER WATCH REPORT

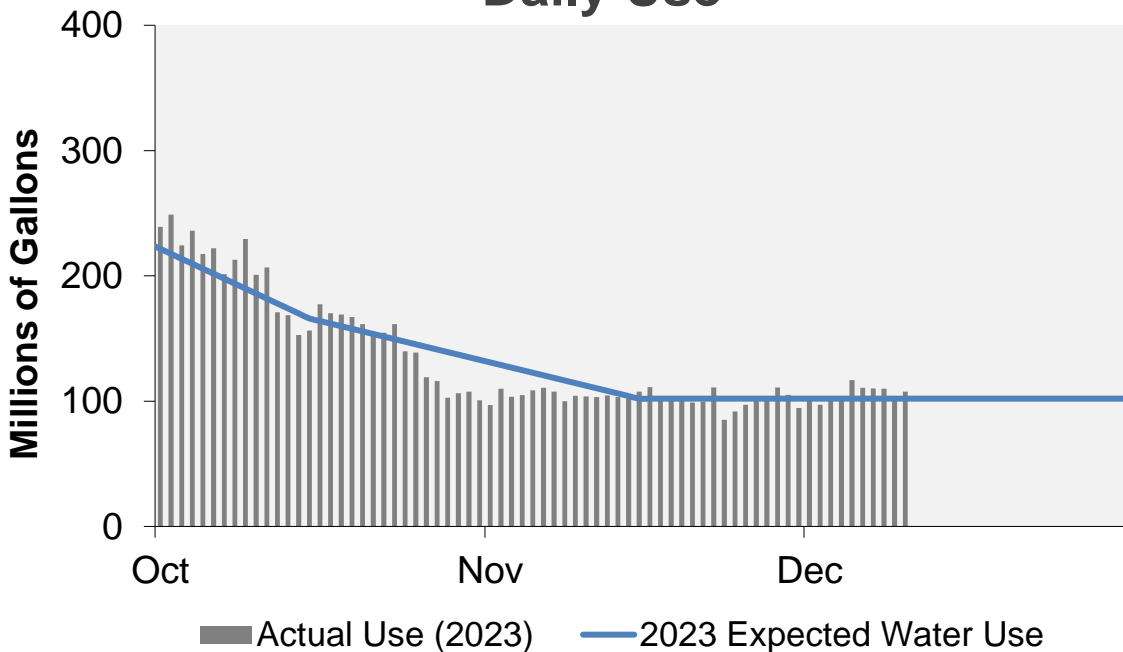
December 11, 2023

### Supply Reservoir Contents

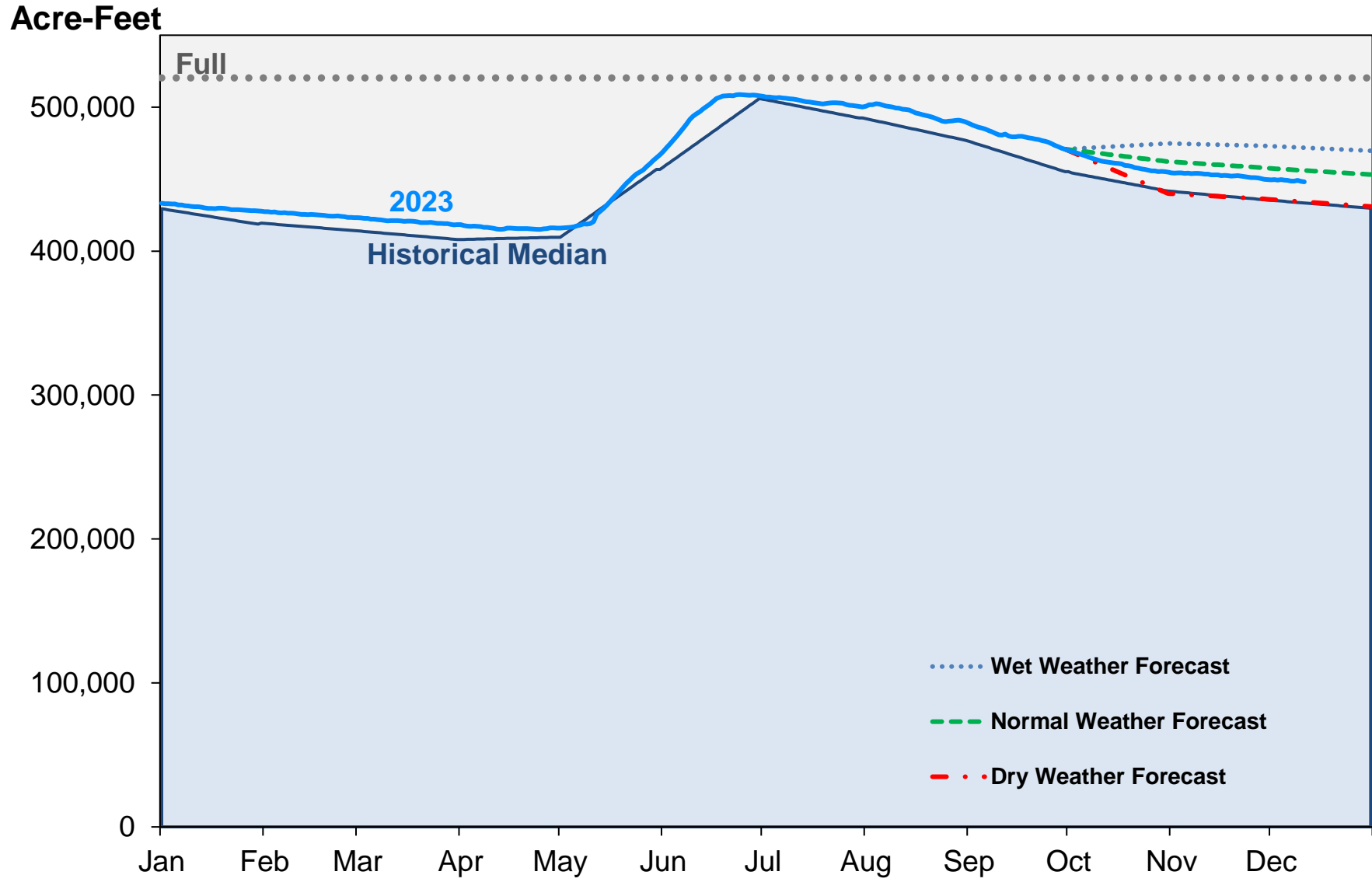
Reservoir	Capacity		Current Usable Contents (acre-feet)	Percent Full		
	(acre-feet)			Last Year	Historical Median	
	Total	Usable	Current			
Antero	20,122	20,067	19,454	97%	100%	100%
Eleven Mile	97,779	97,779	99,349	102%	103%	102%
Cheesman	79,064	79,064	74,053	94%	88%	83%
Marston	19,108	13,133	10,089	77%	72%	61%
Strontia Springs	7,863	7,163	5,785	81%	89%	92%
Chatfield	28,709	12,415	11,879	96%	48%	57%
Dillon	257,304	249,095	214,283	86%	84%	93%
Gross*	41,811	29,811	7,587	25%	38%	59%
Ralston	10,776	7,276	5,724	79%	82%	70%
Meadow Creek	5,370	4,520	-	0%	3%	19%
<b>Total</b>	<b>567,906</b>	<b>520,323</b>	<b>448,203</b>	<b>86%</b>	<b>84%</b>	<b>84%</b>

\*Gross Reservoir storage is limited to 29,938 acre feet in total storage during construction activities. The percent full figures are based on the normal usable capacity of 29,811 acre feet.

### Daily Use



# Supply Reservoir Contents

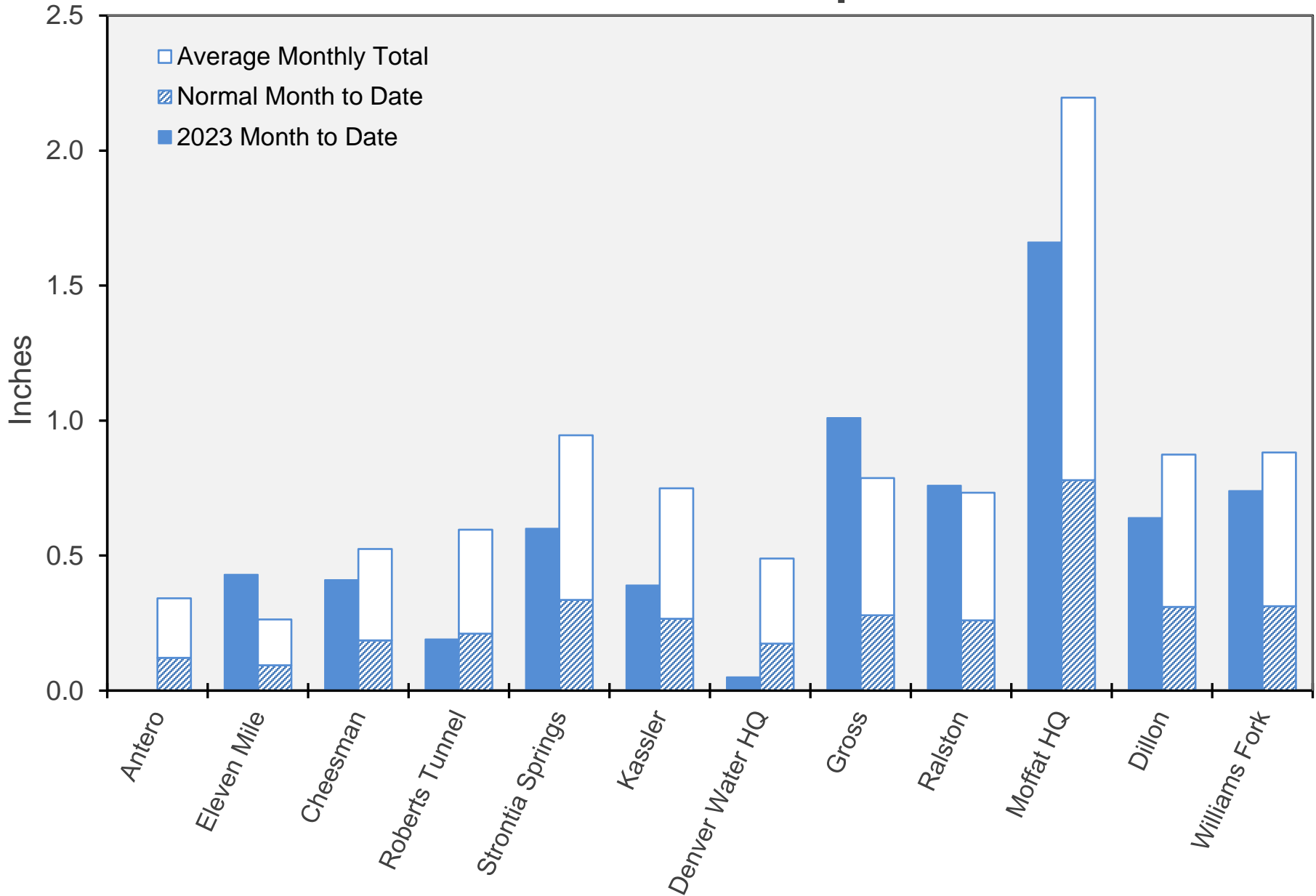


Note: Denver Water forecasts seasonal reservoir storage contents under dry future weather, normal future weather and wet future weather scenarios.

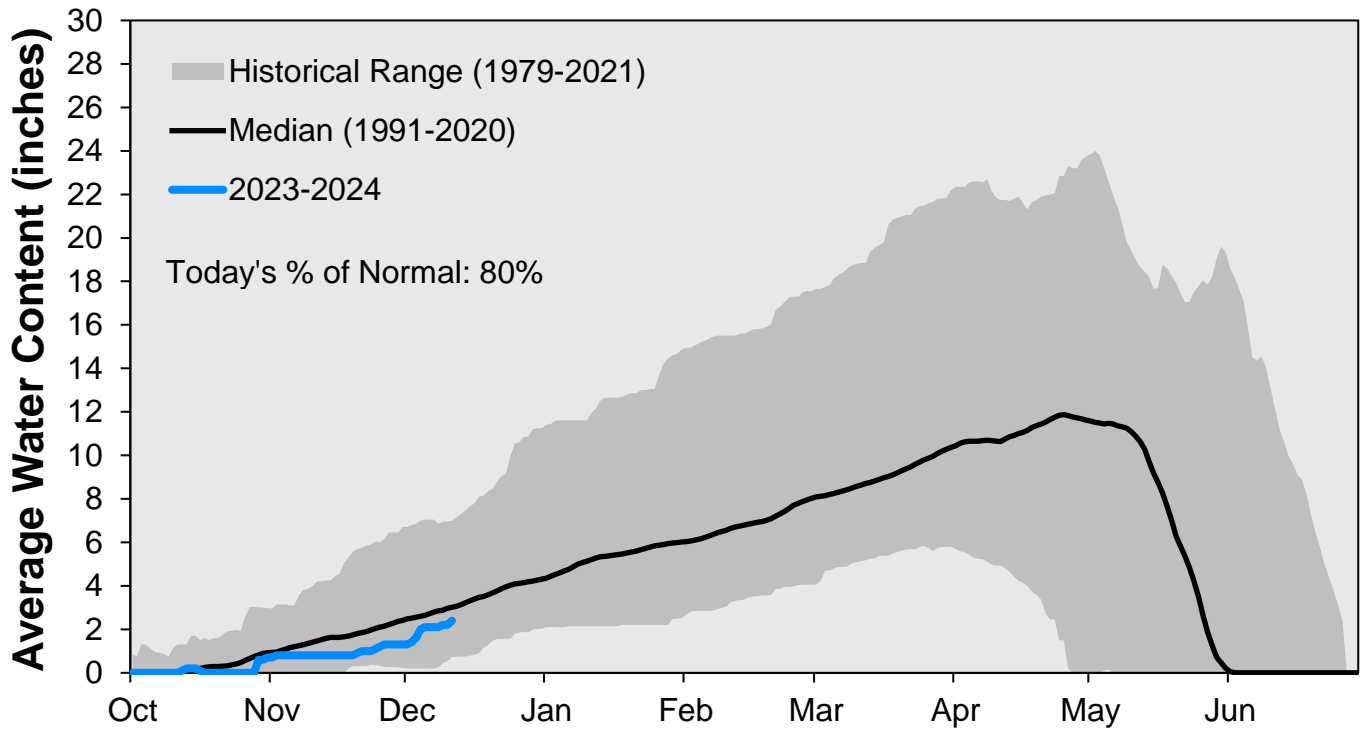
Gross Reservoir storage is limited to 29,938 acre feet in total storage during construction activities. The percent full figures are based on the normal usable capacity of 29,811 acre feet.

December 11, 2023

# December Precipitation

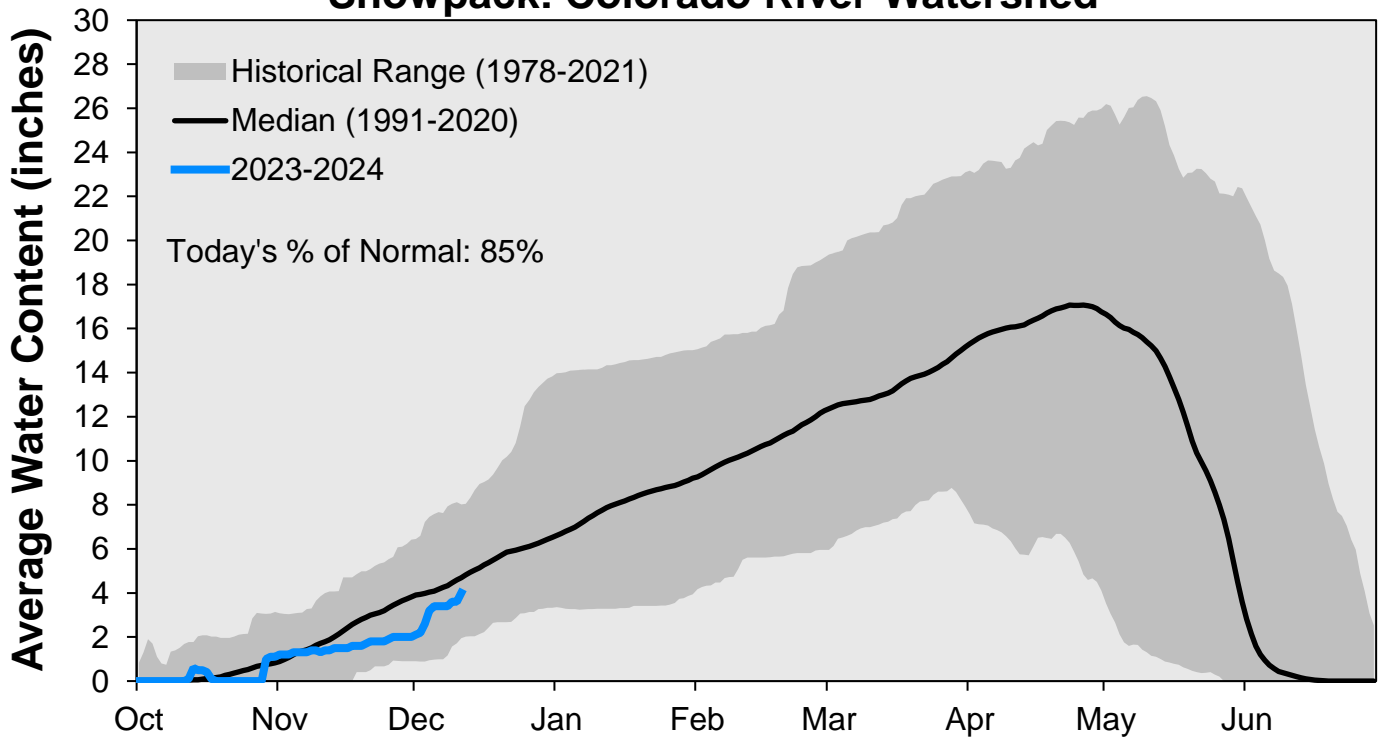


### Snowpack: South Platte River Watershed



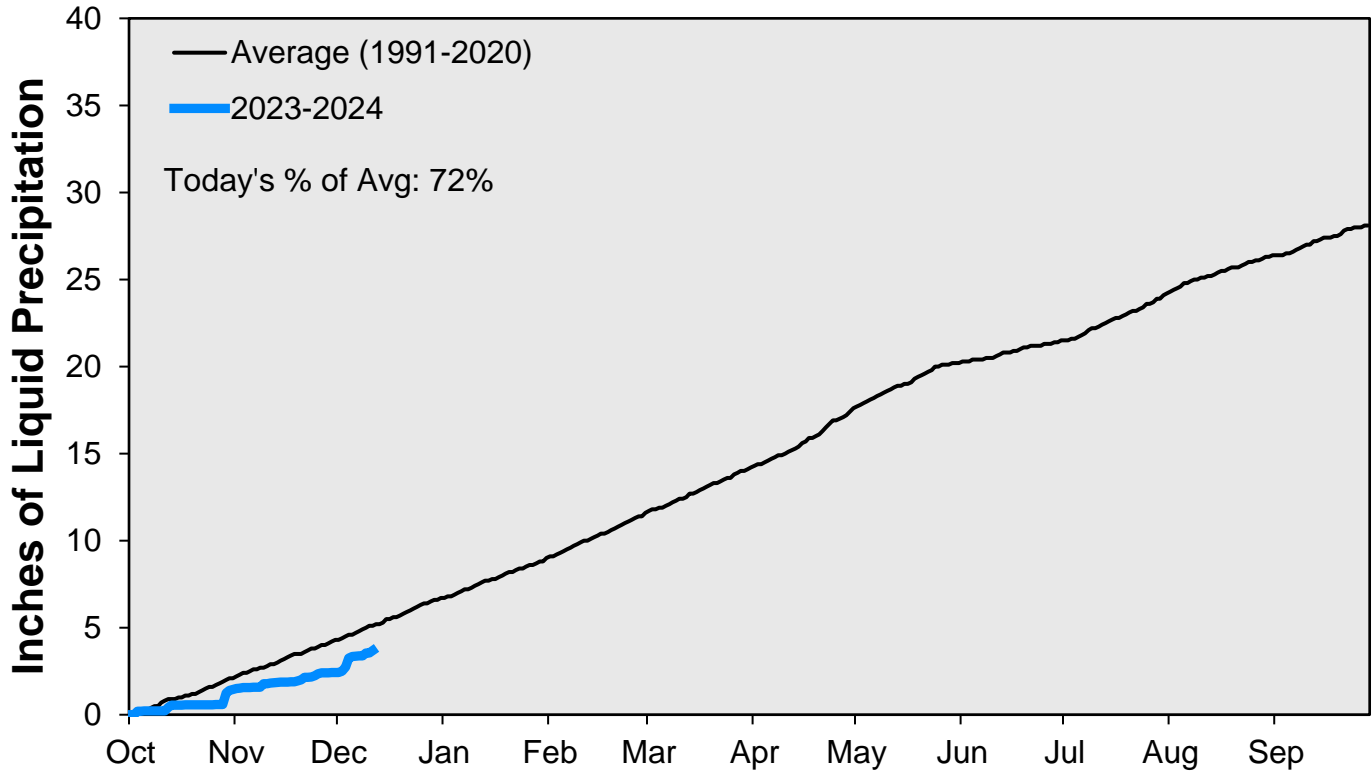
Data are from the 7 SNOTEL stations above Denver Water's Upper South Platte diversion facilities.

### Snowpack: Colorado River Watershed

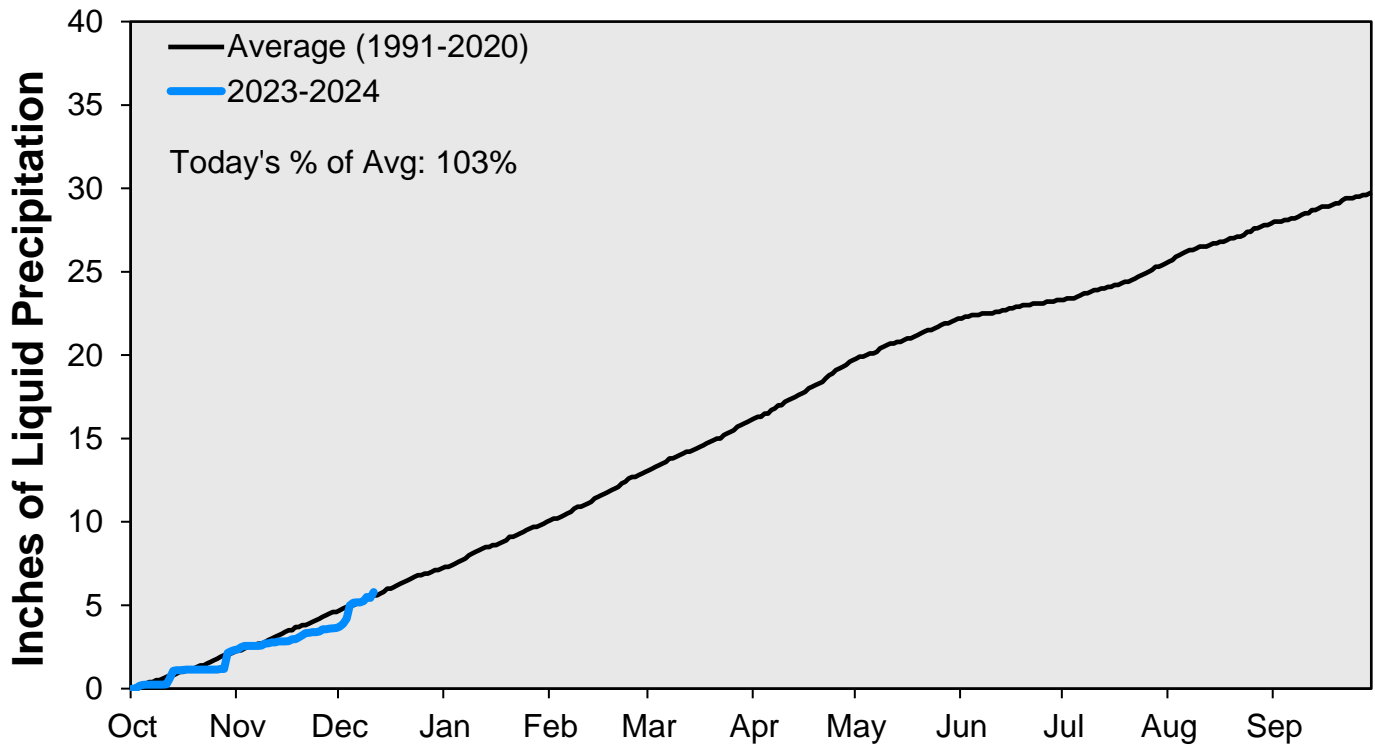


Data are from the 9 SNOTEL stations above Denver Water's Upper Colorado diversion facilities.

### Cumulative Precipitation: South Platte River



### Cumulative Precipitation: Colorado River



Data are from the 7 SNOTEL stations above Denver Water's Upper Colorado diversion facilities.

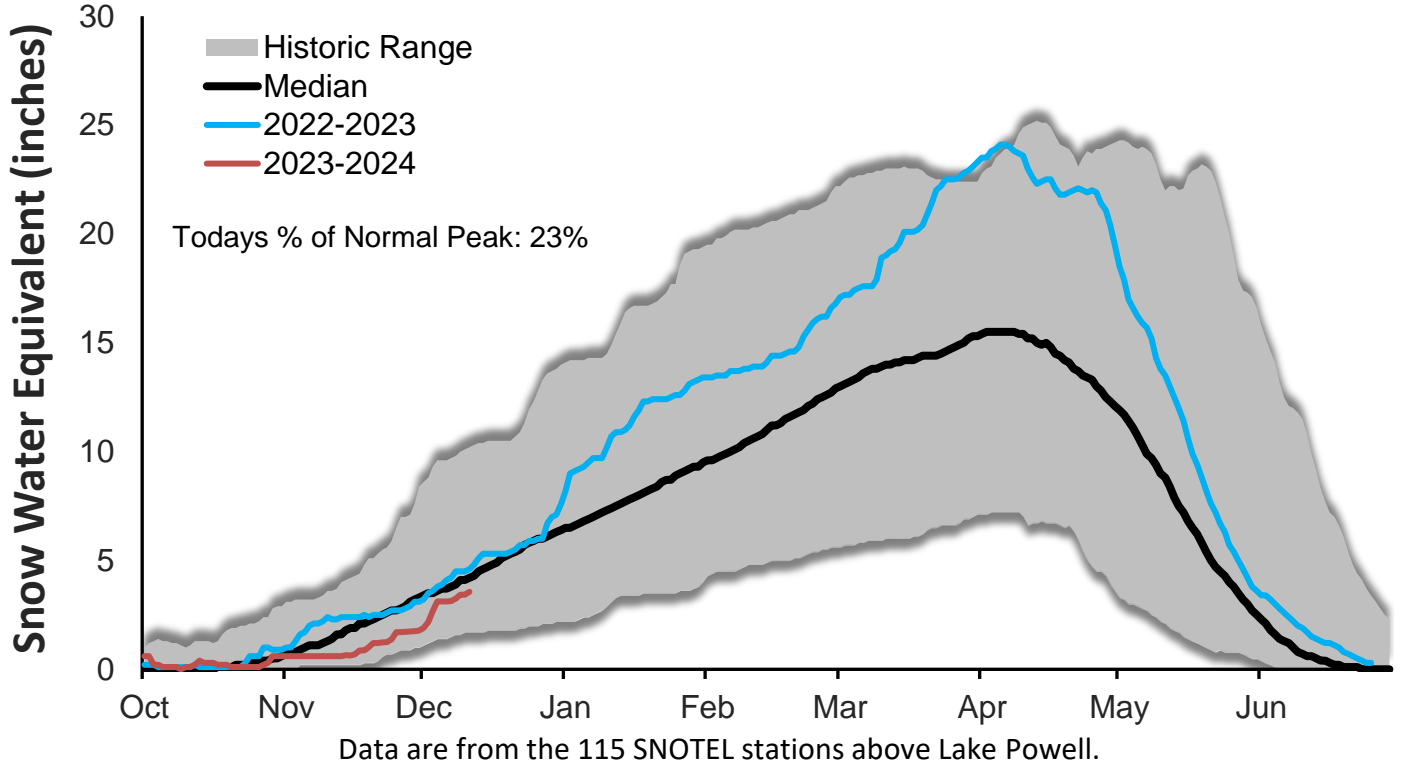
December 11, 2023

Denver Water Use and Reservoir Contents 2023													
	Jan	Feb	Mar	Apr	May	Jun	Jul	Aug	Sep	Oct	Nov	Dec	YTD-Avg
Predicted End-of-Month Supply Reservoir Contents (Full = 518,449 AF)													442,200
Actual End-of-Month Supply Reservoir Contents (AF)	427,785	423,299	418,434	416,025	467,021	507,913	500,096	489,731	470,686	454,894	449,635		
Actual % Full	83%	82%	81%	80%	90%	98%	96%	94%	91%	88%	87%		
Historical Median % Full	81%	80%	79%	79%	88%	98%	95%	92%	88%	85%	84%	83%	
2023 Expected Daily Use (MG)	102	102	102	125	190	275	310	297	270	172	108	102	185
Actual Daily Use (MG)	1	105	111	105	107	164	182	201	235	307	239	97	102
	2	115	116	114	111	150	200	217	251	275	249	110	97
	3	113	119	109	108	178	166	258	236	254	224	104	101
	4	112	114	112	102	163	155	210	282	269	236	105	103
	5	117	111	114	113	180	166	195	264	263	217	108	117
	6	104	111	114	113	173	160	192	241	294	222	111	111
	7	112	111	109	117	182	174	202	271	277	201	108	110
	8	114	112	99	117	187	173	191	261	299	213	100	110
	9	110	110	106	123	190	175	211	302	270	229	104	102
D	10	112	103	109	132	175	171	263	280	236	201	104	108
A	11	112	108	107	137	142	163	264	297	233	207	103	
Y	12	112	113	106	141	145	153	288	269	219	171	104	
	13	112	115	110	131	135	163	274	265	251	169	103	
O	14	109	116	109	121	138	174	291	309	213	153	102	
F	15	106	111	107	111	151	170	265	284	202	156	108	
	16	117	116	107	123	149	158	271	319	196	177	111	
M	17	109	113	108	138	159	153	324	297	215	170	101	
O	18	106	111	107	134	149	165	281	314	245	169	104	
N	19	116	112	105	130	158	212	290	284	234	167	102	
T	20	110	115	108	124	151	209	236	268	250	162	99	
H	21	109	111	109	118	162	230	245	334	240	154	100	
	22	111	113	109	110	180	170	251	314	256	155	111	
	23	111	123	111	120	185	185	272	334	231	161	85	
	24	112	121	110	126	195	186	309	294	235	140	92	
	25	111	121	102	124	186	201	276	263	266	139	97	
	26	115	120	104	115	179	250	303	221	243	119	104	
	27	107	118	107	120	164	250	274	232	263	116	103	
	28	110	113	106	120	172	254	311	244	251	103	111	
	29	109		106	124	201	228	283	240	262	106	105	
	30	108		112	143	196	217	281	291	232	107	95	
	31	113		101		210		293	282		101	102	
Monthly Average	111	114	108	122	169	187	259	277	249	172	103	106	169
% of 2023 Expected Daily Use	109%	112%	106%	97%	89%	68%	83%	93%	92%	100%	95%	104%	91%

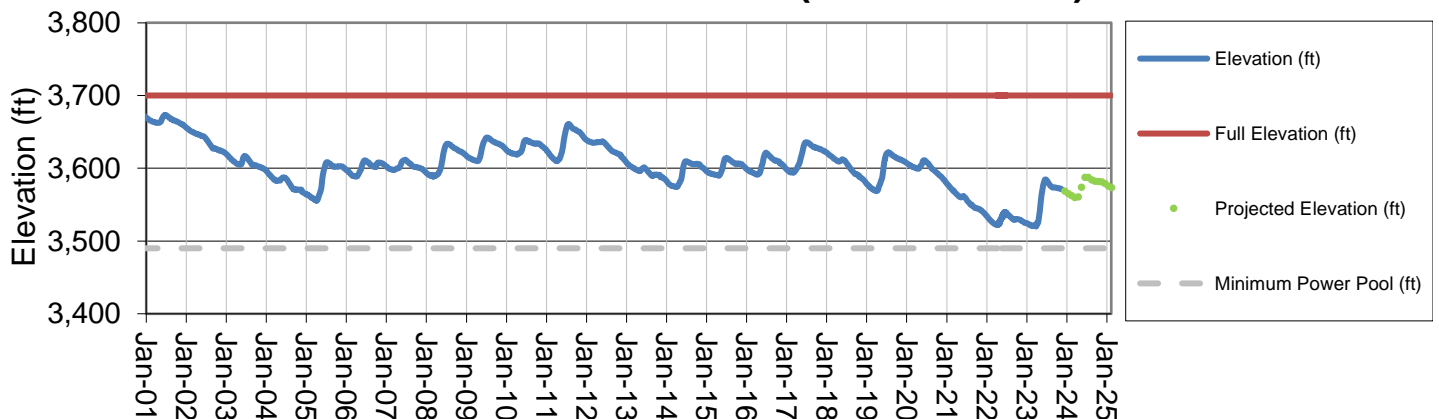
Notes: 1) "AF" denotes acre-feet. "MG" denotes million gallons. 2) Expected Daily Use is based on historical use with normal weather conditions. 3) The predicted end-of-month supply reservoir contents figures assume normal weather December 4<sup>th</sup>, 2023. 4) The differences between predicted and actual end-of-month supply reservoir contents are the result of normal estimation error of daily use, supply, evaporation, carriage losses and raw water deliveries. 5) Predicted supply reservoir contents last updated on December 4<sup>th</sup>, 2023. 6) Daily water figures are subject to change.

# Lake Powell Report\*

## Colorado River Above Lake Powell Snowpack



## Lake Powell Elevation (2001-Current)



\* Denver Water gets half of its water supply from the Colorado River and closely monitors conditions at Lake Powell and within the greater Colorado River Basin.