



WATER WATCH REPORT

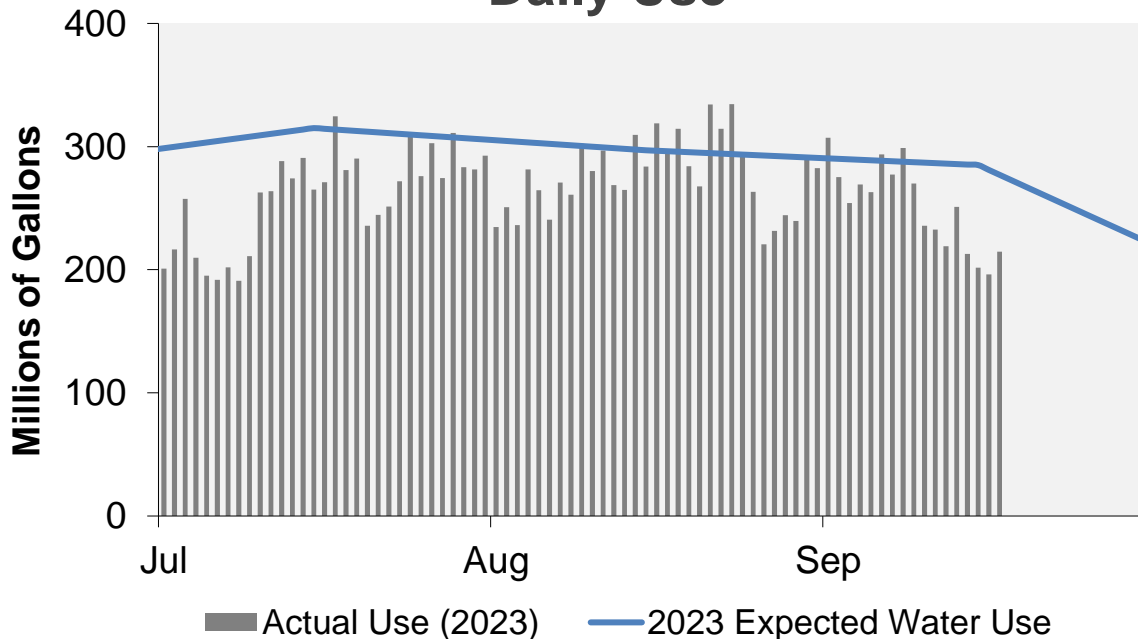
September 18, 2023

Supply Reservoir Contents

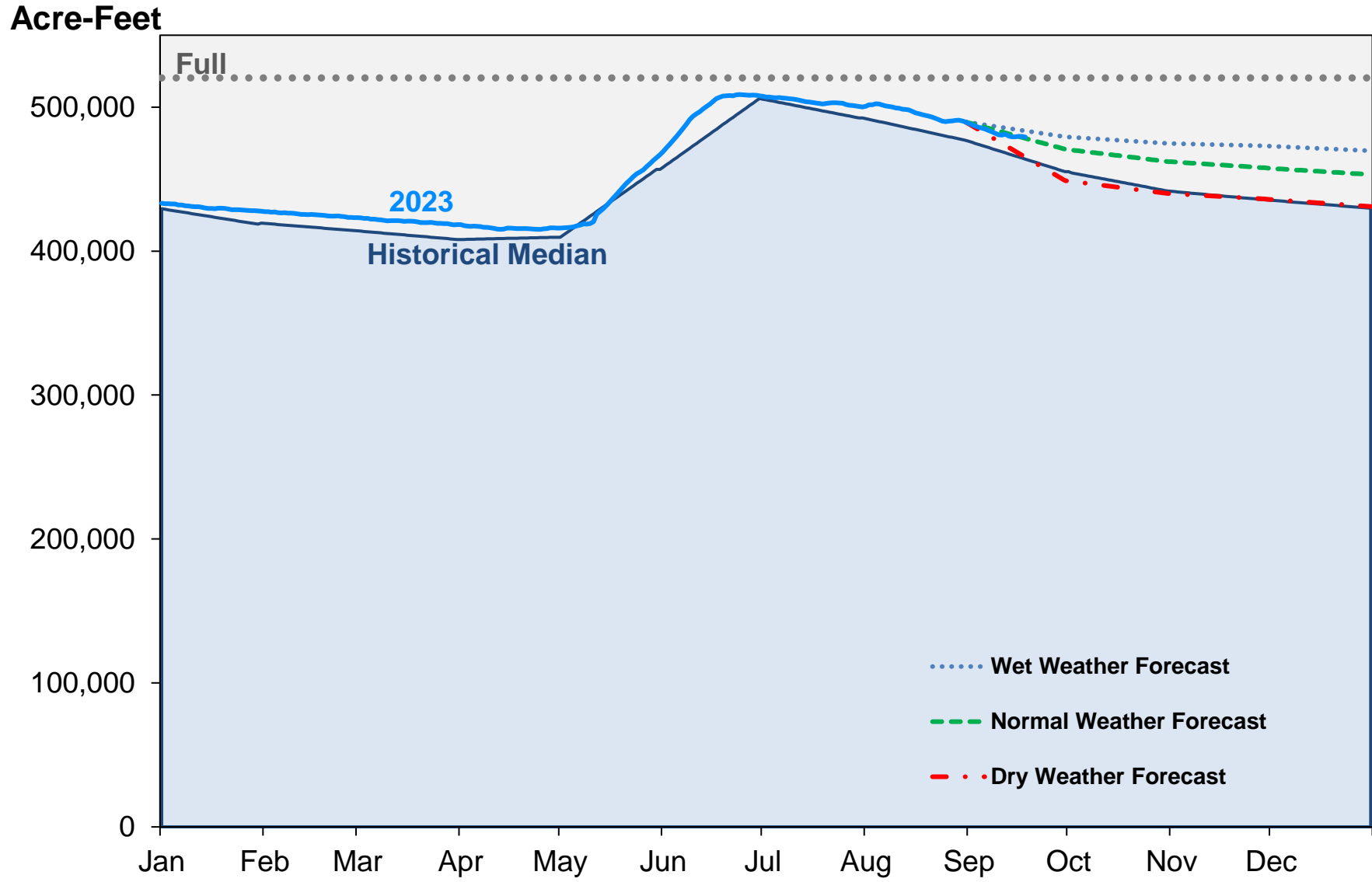
Reservoir	Capacity		Current Usable Contents (acre-feet)	Percent Full		
	(acre-feet)			Current	Last Year	Historical Median
	Total	Usable				
Antero	20,122	20,067	20,086	100%	98%	99%
Eleven Mile	97,779	97,779	100,071	102%	102%	102%
Cheesman	79,064	79,064	77,725	98%	95%	89%
Marston	19,108	13,133	9,697	74%	71%	54%
Strontia Springs	7,863	7,163	6,253	87%	90%	93%
Chatfield	28,709	12,415	10,525	85%	32%	50%
Dillon	257,304	249,095	234,098	94%	88%	97%
Gross*	41,811	29,811	14,131	47%	52%	80%
Ralston	10,776	7,276	5,072	70%	92%	77%
Meadow Creek	5,370	4,520	1,635	36%	47%	56%
Total	567,906	520,323	479,293	92%	88%	89%

*Gross Reservoir storage is limited to 29,938 acre feet in total storage during construction activities. The percent full figures are based on the normal usable capacity of 29,811 acre feet.

Daily Use



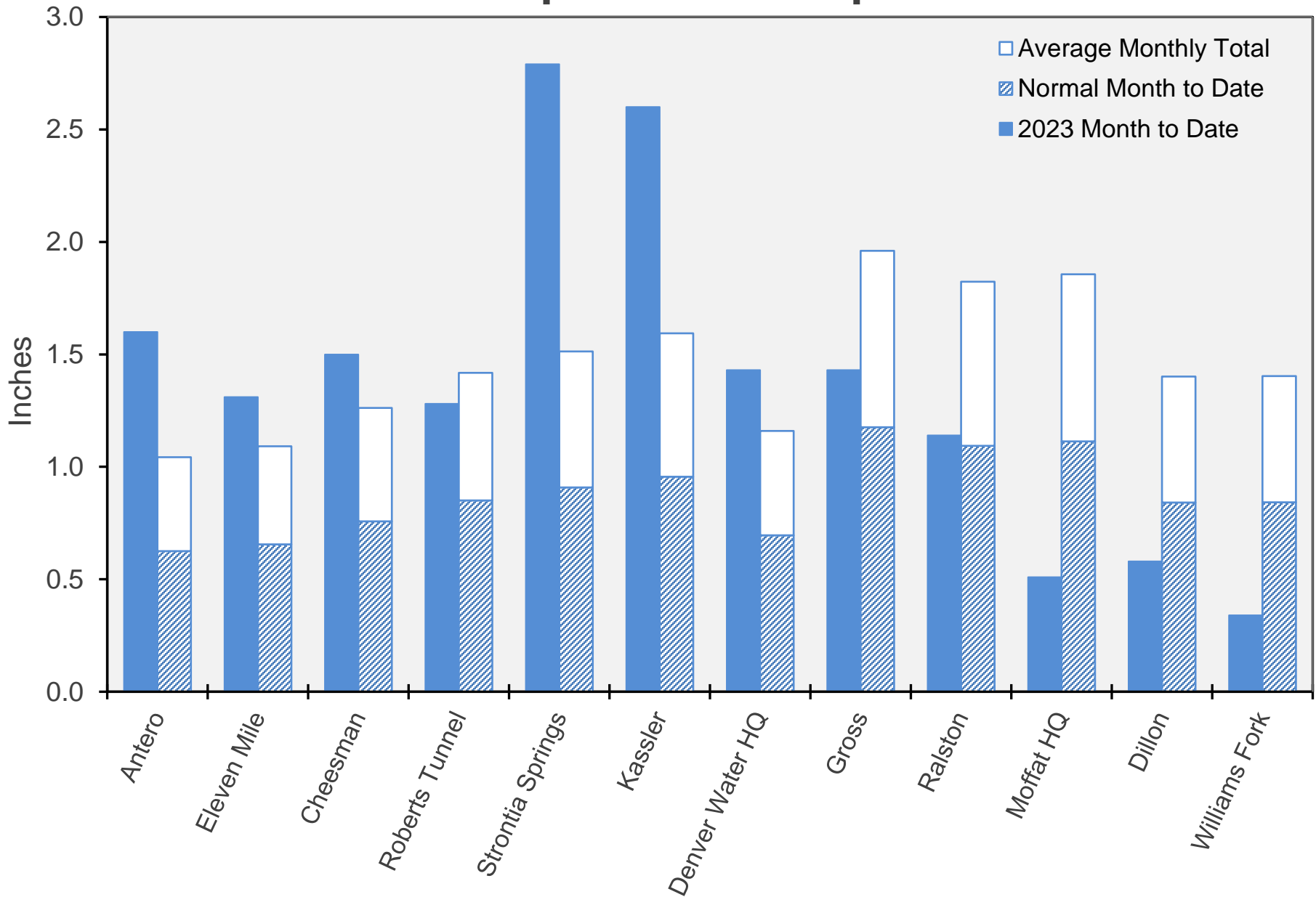
Supply Reservoir Contents



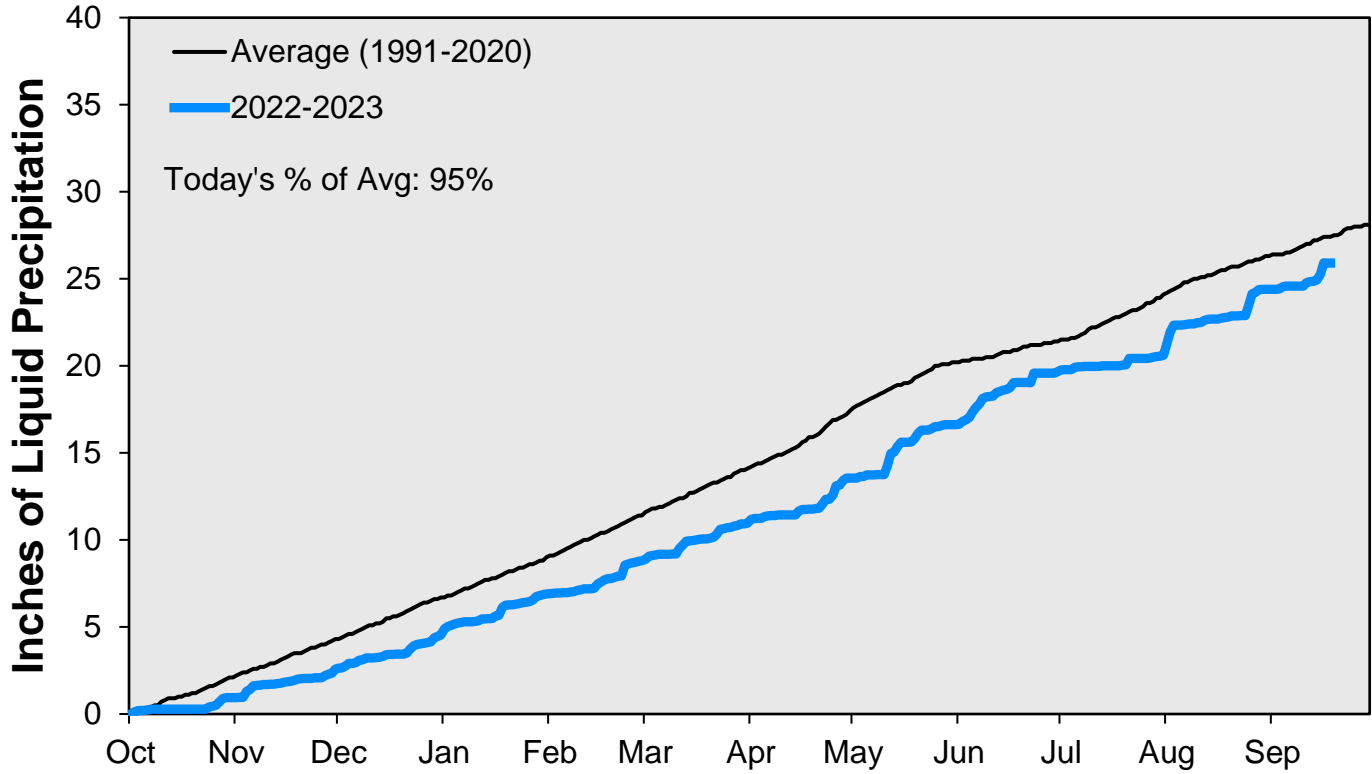
Note: Denver Water forecasts seasonal reservoir storage contents under dry future weather, normal future weather and wet future weather scenarios.

Gross Reservoir storage is limited to 29,938 acre feet in total storage during construction activities. The percent full figures are based on the normal usable capacity of 29,811 acre feet.

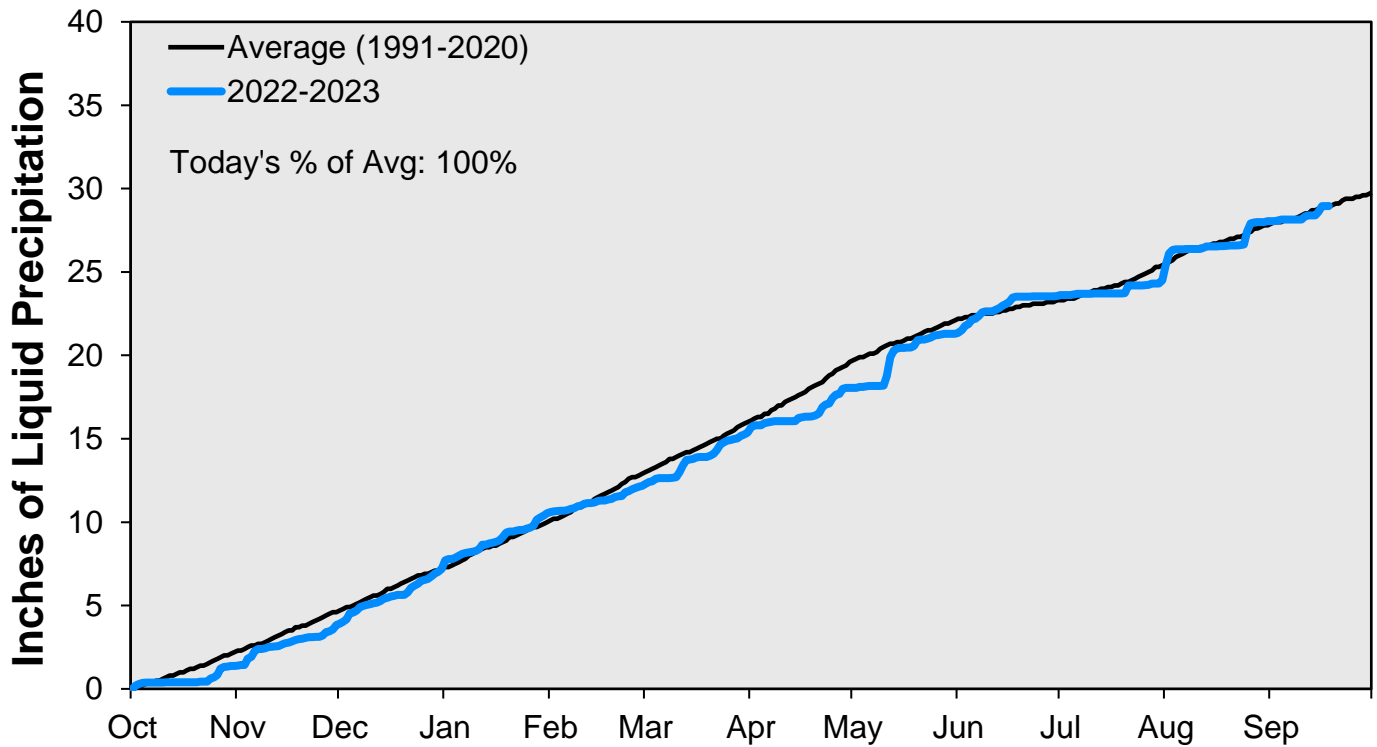
September Precipitation



Cumulative Precipitation: South Platte River

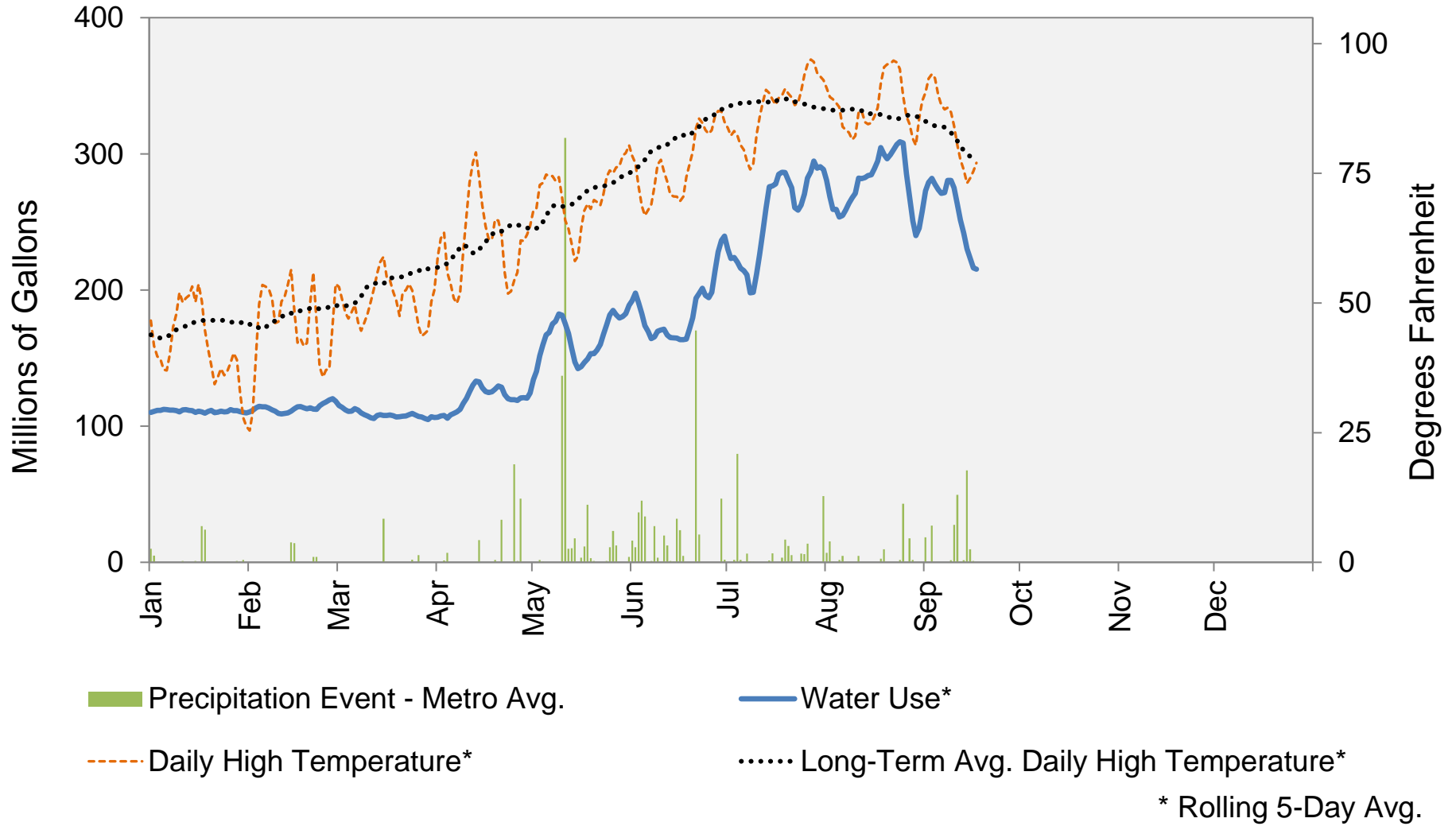


Cumulative Precipitation: Colorado River



Data are from the 7 SNOTEL stations above Denver Water's Upper Colorado diversion facilities.

2023 Water Use and Weather Conditions

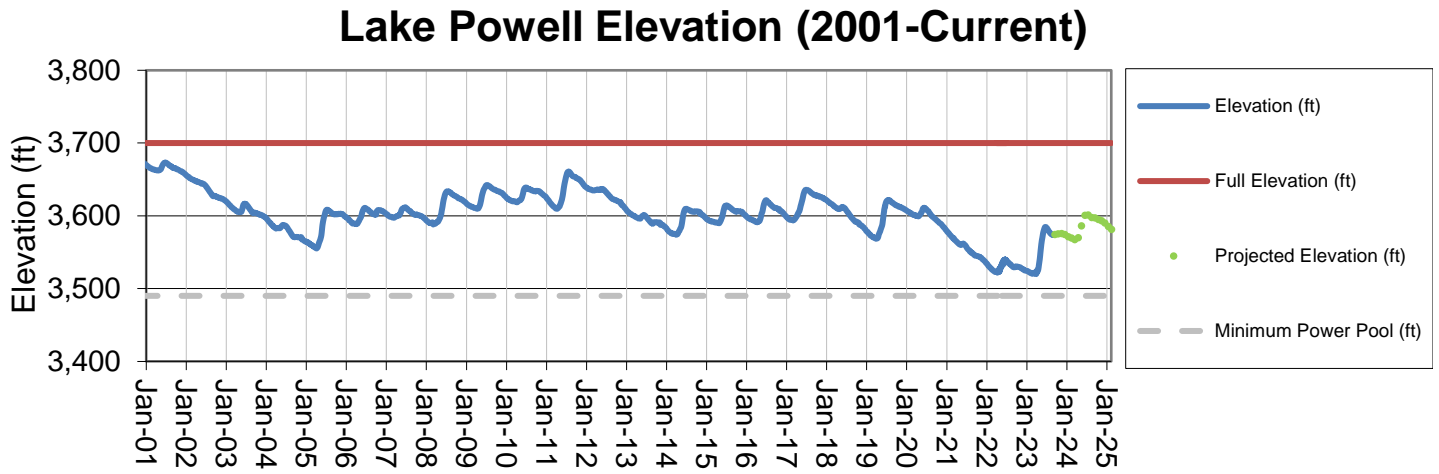


September 18, 2023

Denver Water Use and Reservoir Contents 2023													
	Jan	Feb	Mar	Apr	May	Jun	Jul	Aug	Sep	Oct	Nov	Dec	YTD-Avg
Predicted End-of-Month Supply Reservoir Contents (Full = 518,449 AF)	480,800												
Actual End-of-Month Supply Reservoir Contents (AF)	427,785	423,299	418,434	416,025	467,021	507,913	500,096	489,731					
Actual % Full	83%	82%	81%	80%	90%	98%	96%	94%					
Historical Median % Full	81%	80%	79%	79%	88%	98%	95%	92%	88%	85%	84%	83%	
2023 Expected Daily Use (MG)	102	102	102	125	190	275	310	297	270	172	108	102	194
Actual Daily Use (MG)	1	105	111	105	107	164	182	201	235	307			
	2	115	116	114	111	150	200	217	251	275			
	3	113	119	109	108	178	166	258	236	254			
	4	112	114	112	102	163	155	210	282	269			
	5	117	111	114	113	180	166	195	264	263			
	6	104	111	114	113	173	160	192	241	294			
	7	112	111	109	117	182	174	202	271	277			
	8	114	112	99	117	187	173	191	261	299			
	9	110	110	106	123	190	175	211	302	270			
D	10	112	103	109	132	175	171	263	280	236			
A	11	112	108	107	137	142	163	264	297	233			
Y	12	112	113	106	141	145	153	288	269	219			
	13	112	115	110	131	135	163	274	265	251			
O	14	109	116	109	121	138	174	291	309	213			
F	15	106	111	107	111	151	170	265	284	202			
	16	117	116	107	123	149	158	271	319	196			
M	17	109	113	108	138	159	153	324	297	215			
O	18	106	111	107	134	149	165	281	314				
N	19	116	112	105	130	158	212	290	284				
T	20	110	115	108	124	151	209	236	268				
H	21	109	111	109	118	162	230	245	334				
	22	111	113	109	110	180	170	251	314				
	23	111	123	111	120	185	185	272	334				
	24	112	121	110	126	195	186	309	294				
	25	111	121	102	124	186	201	276	263				
	26	115	120	104	115	179	250	303	221				
	27	107	118	107	120	164	250	274	232				
	28	110	113	106	120	172	254	311	244				
	29	109		106	124	201	228	283	240				
	30	108		112	143	196	217	281	291				
	31	113		101		210		293	282				
Monthly Average	111	114	108	122	169	187	259	277	251				174
% of 2023 Expected Daily Use	109%	112%	106%	97%	89%	68%	83%	93%	93%				90%

Notes: 1) "AF" denotes acre-feet. "MG" denotes million gallons. 2) Expected Daily Use is based on historical use with normal weather conditions. 3) The predicted end-of-month supply reservoir contents figures assume normal weather September 5th, 2023. 4) The differences between predicted and actual end-of-month supply reservoir contents are the result of normal estimation error of daily use, supply, evaporation, carriage losses and raw water deliveries. 5) Predicted supply reservoir contents last updated on September 5th, 2023. 6) Daily water figures are subject to change.

Lake Powell Report*



* Denver Water gets half of its water supply from the Colorado River and closely monitors conditions at Lake Powell and within the greater Colorado River Basin.