



WATER WATCH REPORT

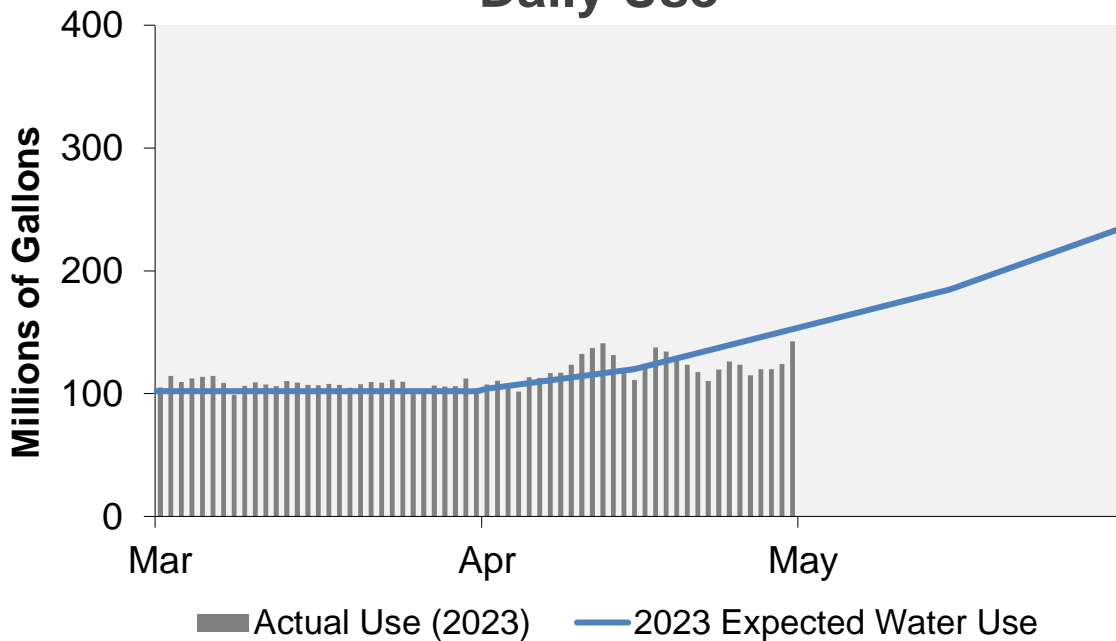
May 1, 2023

Supply Reservoir Contents

Reservoir	Capacity		Current Usable Contents (acre-feet)	Percent Full		
	(acre-feet)			Current	Last Year	Historical Median
	Total	Usable				
Antero	20,122	20,067	20,217	101%	98%	99%
Eleven Mile	97,779	97,779	99,212	101%	102%	102%
Cheesman	79,064	79,064	65,838	83%	71%	90%
Marston	19,108	13,133	7,104	54%	42%	71%
Strontia Springs	7,863	7,163	6,314	88%	83%	94%
Chatfield	28,709	12,415	11,761	95%	57%	93%
Dillon	257,304	249,095	194,928	78%	77%	85%
Gross*	41,811	29,811	4,814	16%	50%	24%
Ralston	10,776	7,276	5,853	80%	31%	69%
Meadow Creek	5,370	4,520	-	0%	67%	13%
Total	567,906	520,323	416,040	80%	78%	79%

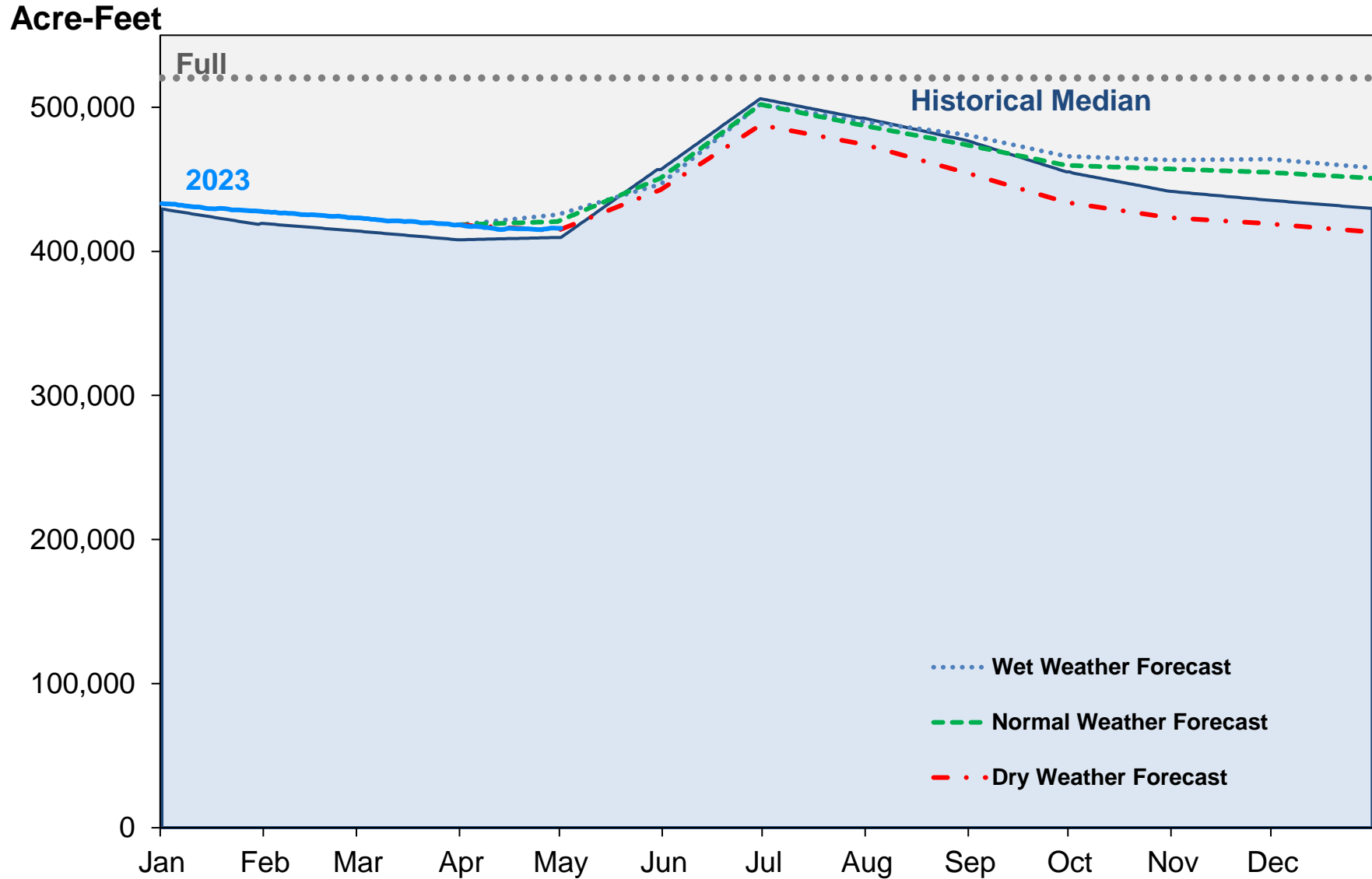
*Gross Reservoir storage is limited to 29,938 acre feet in total storage during construction activities. The percent full figures are based on the normal usable capacity of 29,811 acre feet.

Daily Use



May 1, 2023

Supply Reservoir Contents

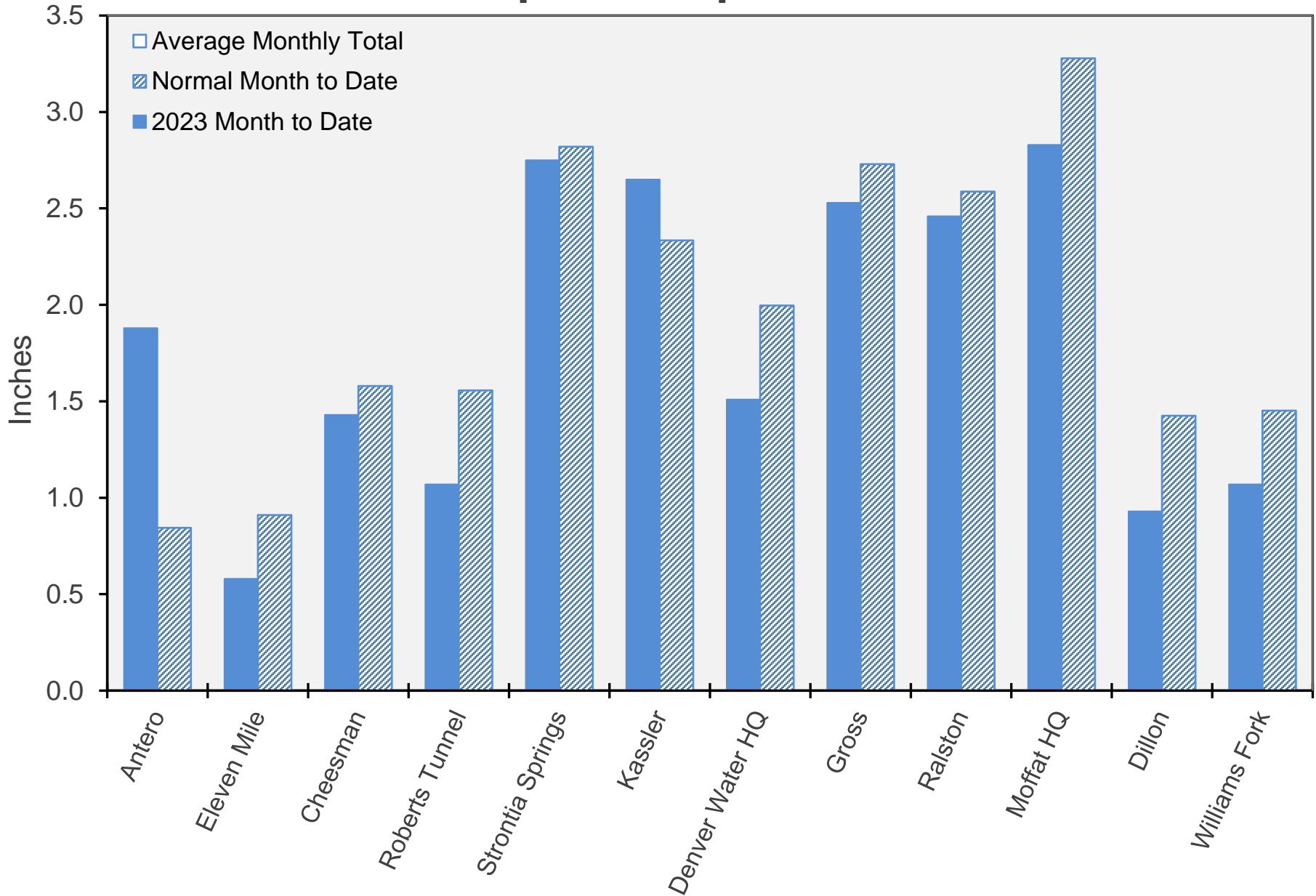


Note: Denver Water forecasts seasonal reservoir storage contents under dry future weather, normal future weather and wet future weather scenarios.

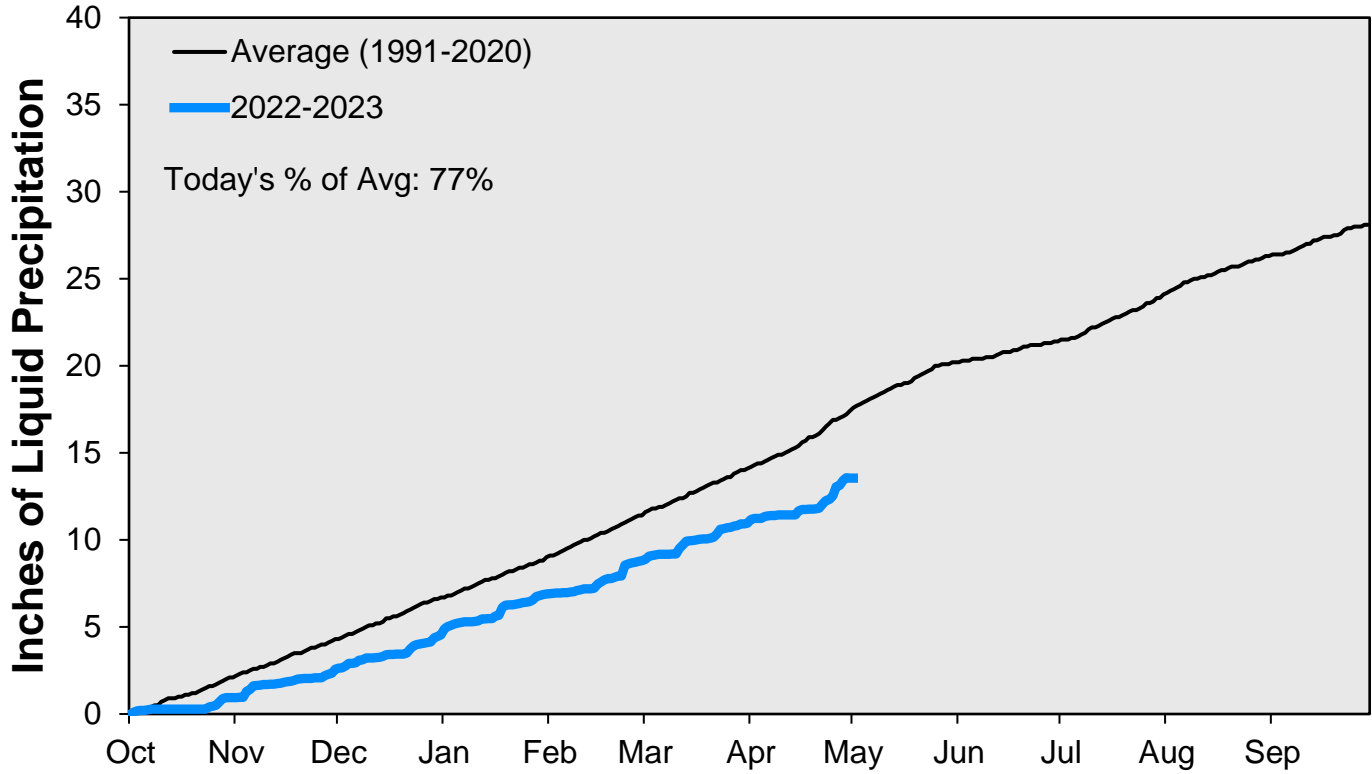
Gross Reservoir storage is limited to 29,938 acre feet in total storage during construction activities. The percent full figures are based on the normal usable capacity of 29,811 acre feet.

May 1, 2023

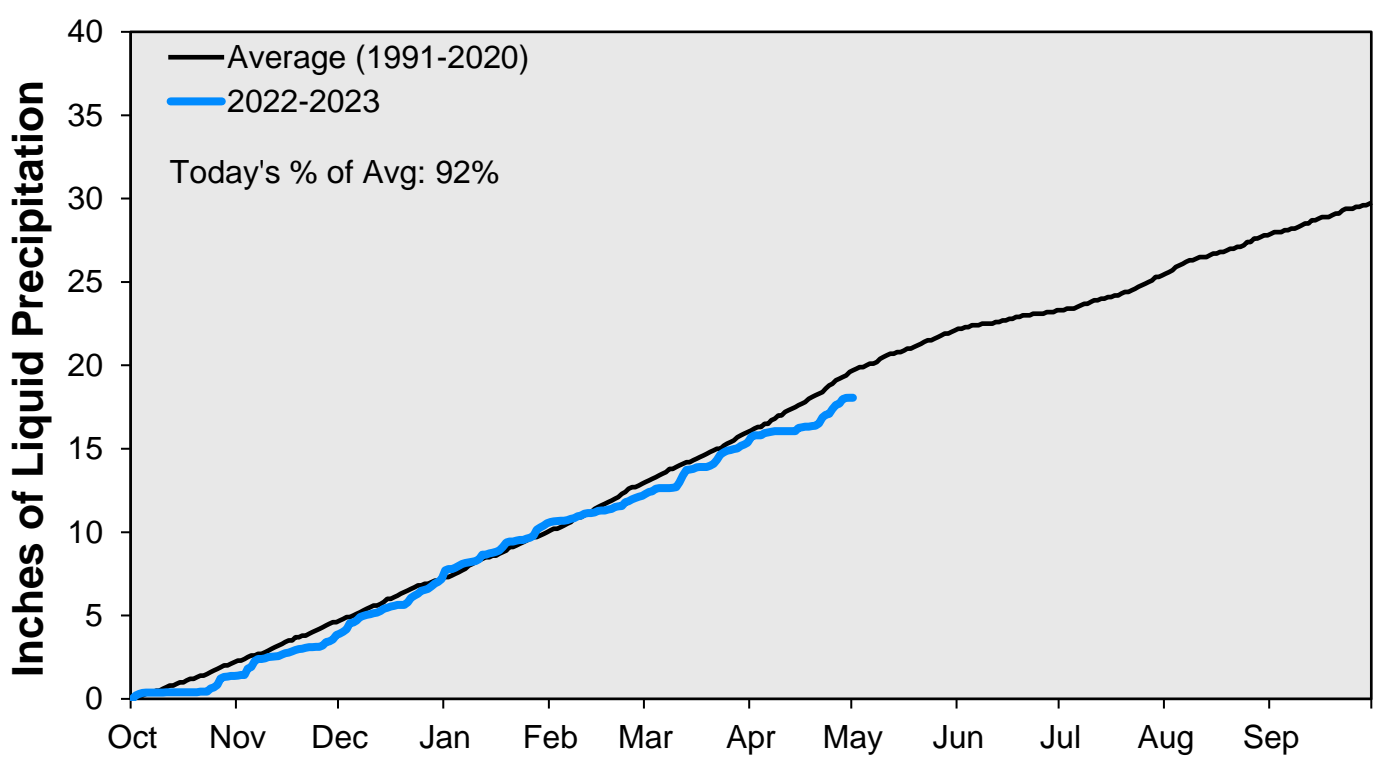
April Precipitation



CUMULATIVE PRECIPITATION: SOUTH PLATTE RIVER

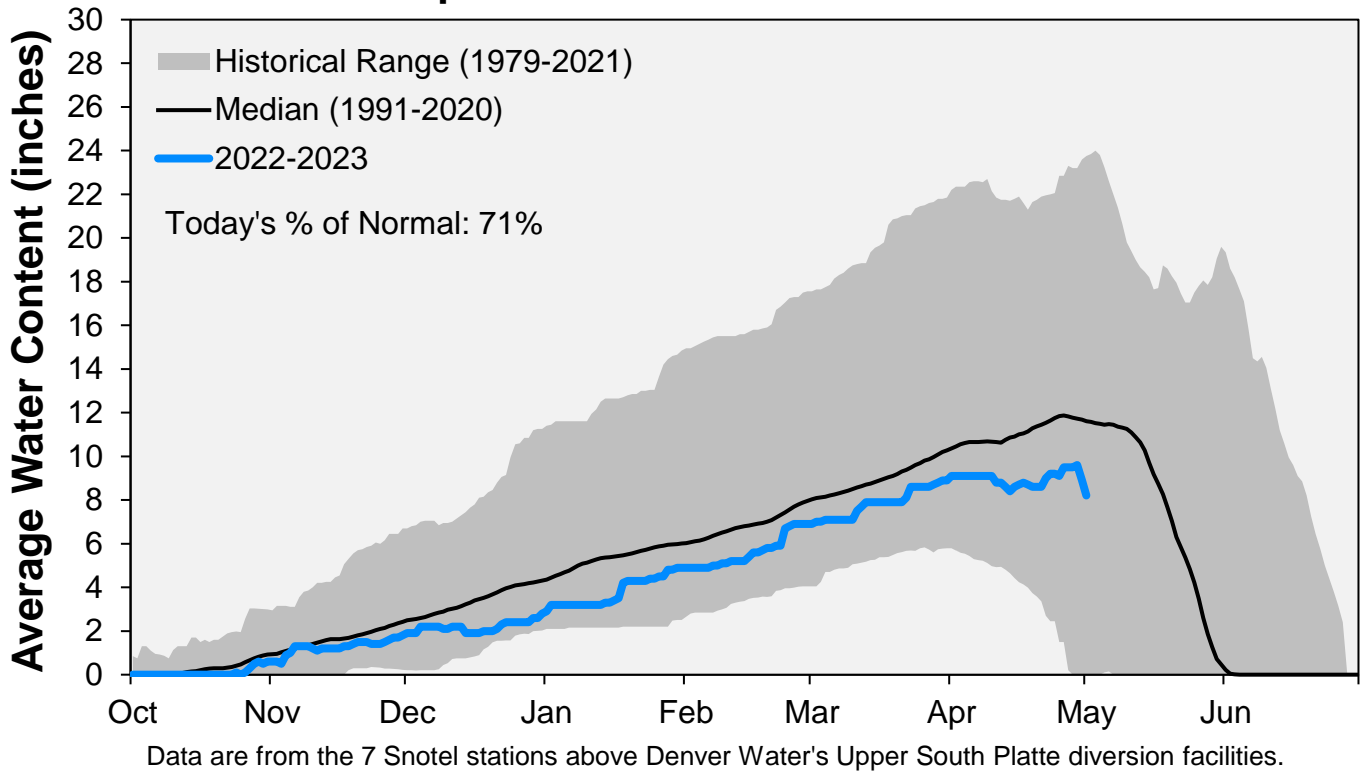


CUMULATIVE PRECIPITATION: COLORADO RIVER WATERSHED

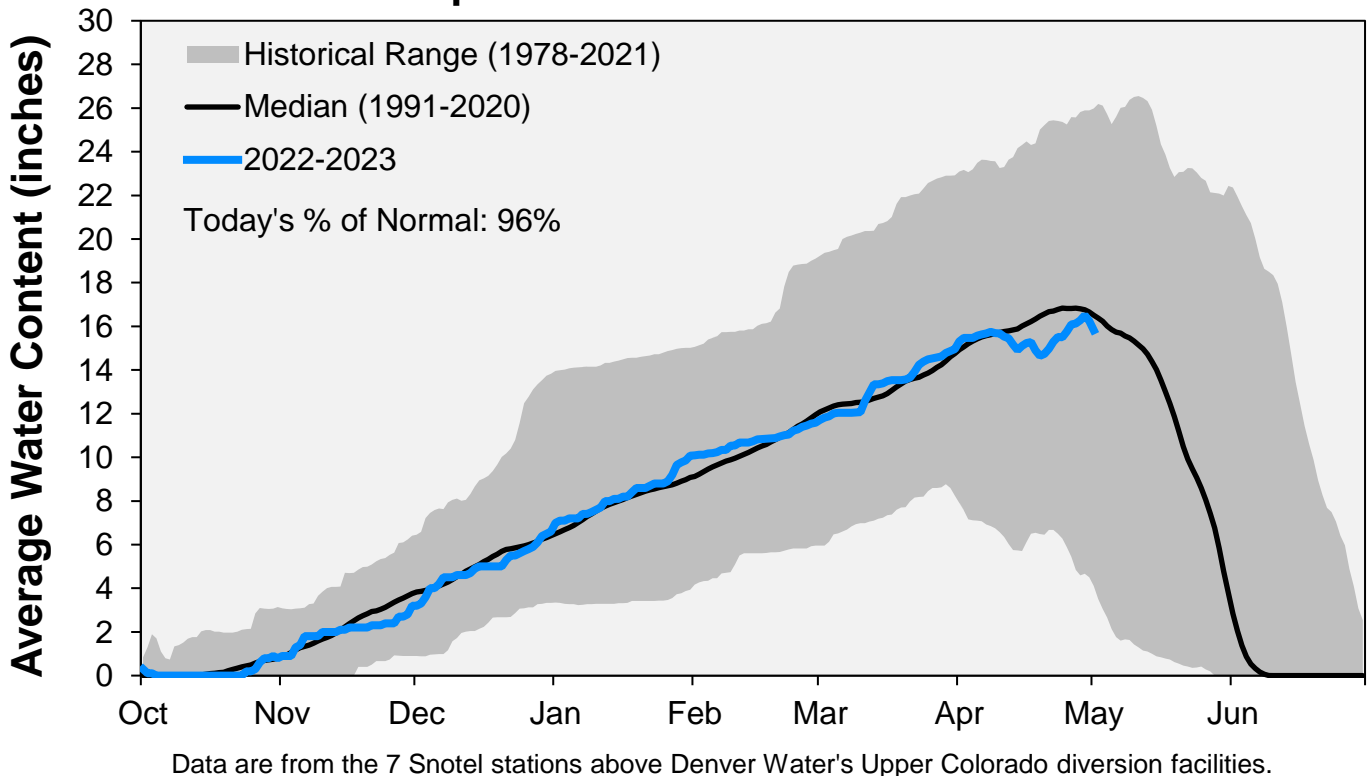


Data are from the 7 SNOTEL stations above Denver Water's Upper Colorado diversion facilities.

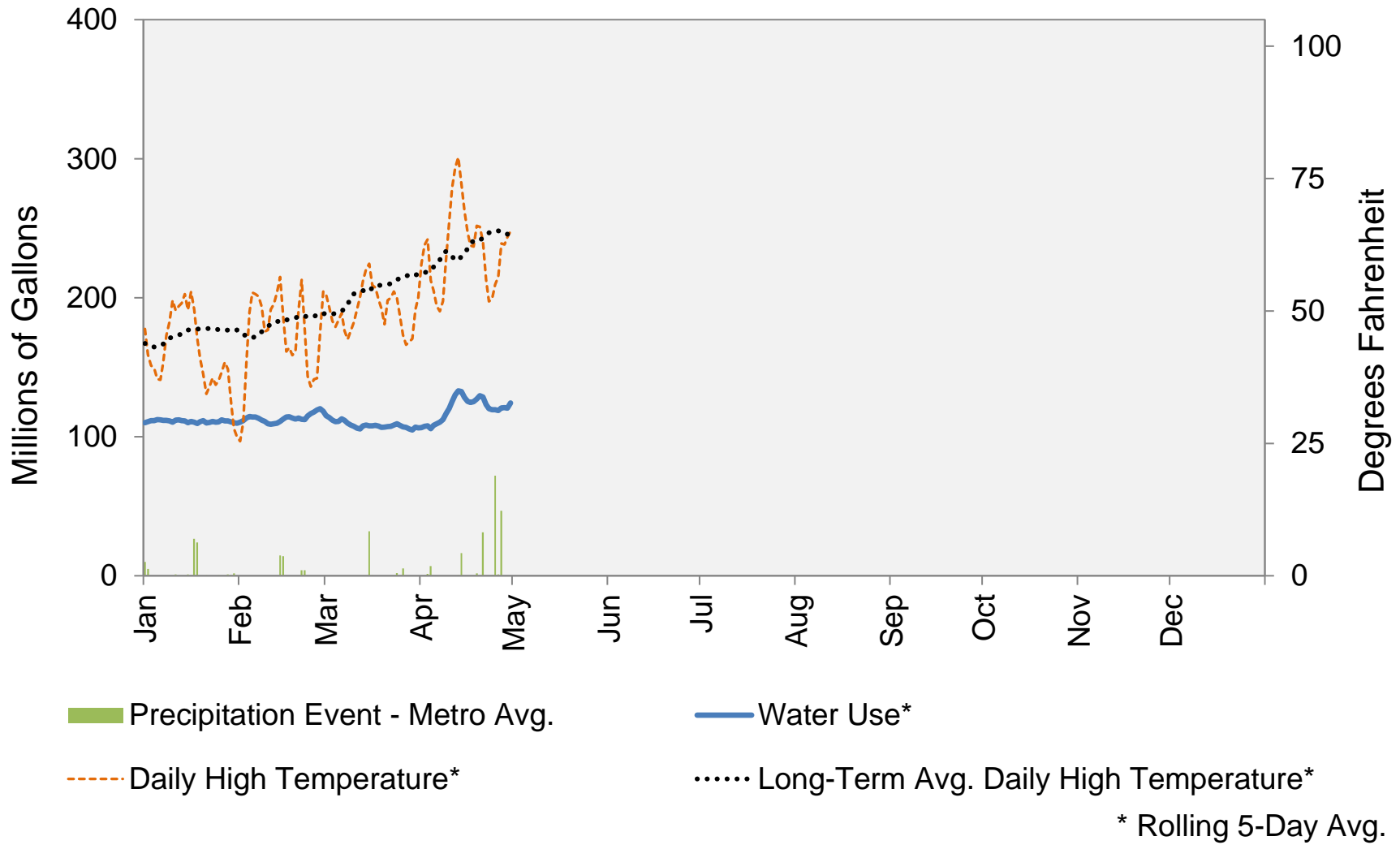
Snowpack: South Platte River Watershed



Snowpack: Colorado River Watershed



2023 Water Use and Weather Conditions



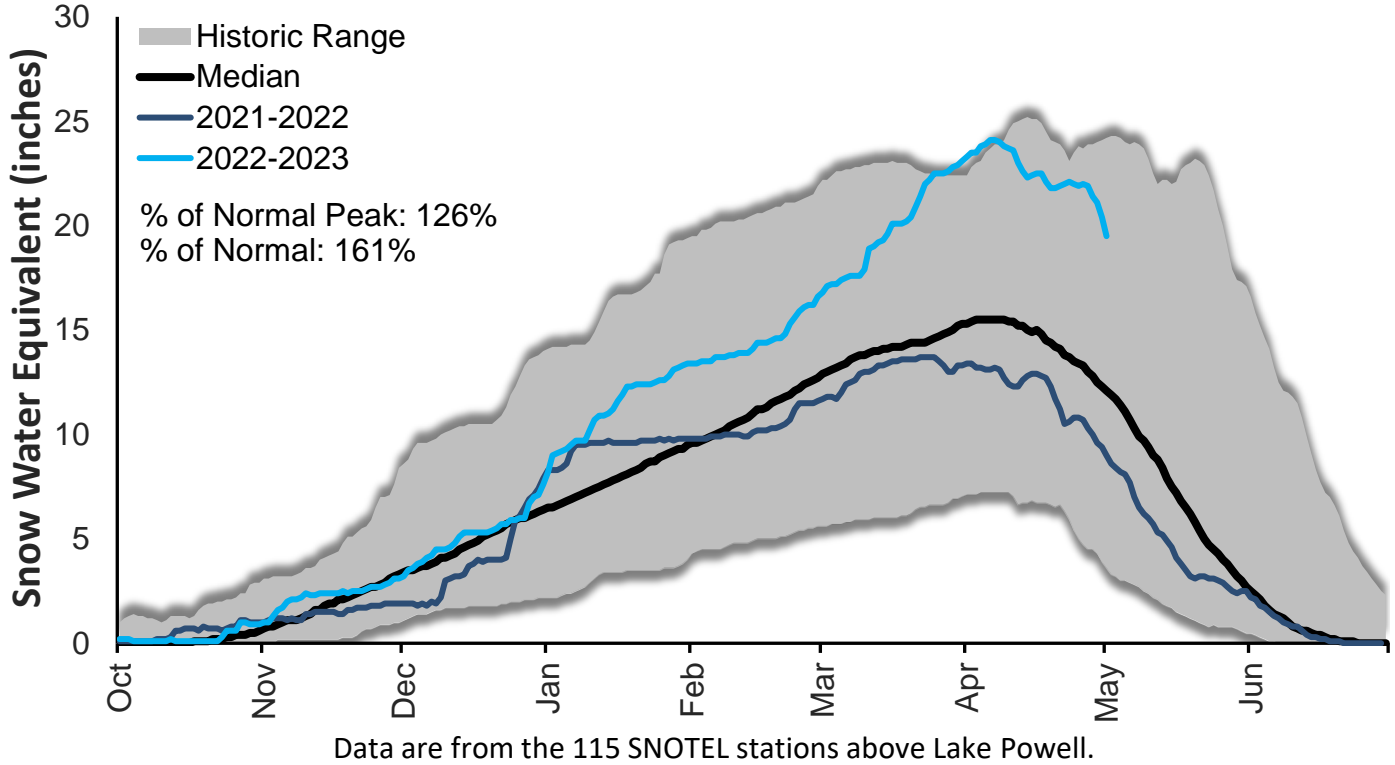
May 1, 2023

Denver Water Use and Reservoir Contents 2023													
	Jan	Feb	Mar	Apr	May	Jun	Jul	Aug	Sep	Oct	Nov	Dec	YTD-Avg
Predicted End-of-Month Supply Reservoir Contents (Full = 518,449 AF)	455,500												
Actual End-of-Month Supply Reservoir Contents (AF)	427,785	423,299	418,434	416,025									
Actual % Full	83%	82%	81%	80%									
Historical Median % Full	81%	80%	79%	79%	88%	98%	95%	92%	88%	85%	84%	83%	
2023 Expected Daily Use (MG)	102	102	102	125	190	275	310	297	270	172	108	102	108
Actual Daily Use (MG)	1	105	111	105	107								
	2	115	116	114	111								
	3	113	119	109	108								
	4	112	114	112	102								
	5	117	111	114	113								
	6	104	111	114	113								
	7	112	111	109	117								
	8	114	112	99	117								
	9	110	110	106	123								
D	10	112	103	109	132								
A	11	112	108	107	137								
Y	12	112	113	106	141								
	13	112	115	110	131								
O	14	109	116	109	121								
F	15	106	111	107	111								
	16	117	116	107	123								
M	17	109	113	108	138								
O	18	106	111	107	134								
N	19	116	112	105	130								
T	20	110	115	108	124								
H	21	109	111	109	118								
	22	111	113	109	110								
	23	111	123	111	120								
	24	112	121	110	126								
	25	111	121	102	124								
	26	115	120	104	115								
	27	107	118	107	120								
	28	110	113	106	120								
	29	109		106	124								
	30	108		112	143								
	31	113		101									
Monthly Average	111	114	108	122									114
% of 2023 Expected Daily Use	109%	112%	106%	97%									105%

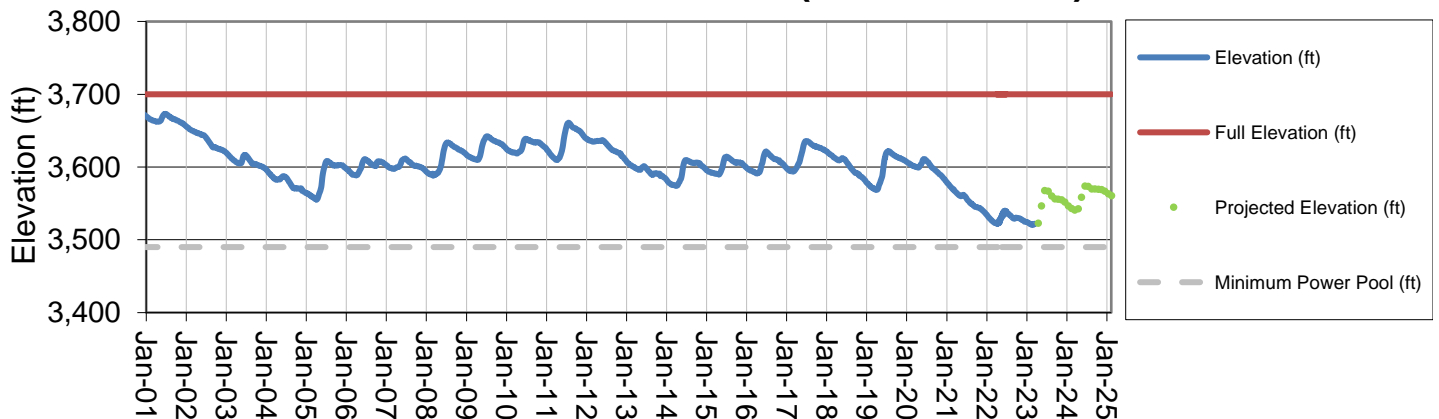
Notes: 1) "AF" denotes acre-feet. "MG" denotes million gallons. 2) Expected Daily Use is based on historical use with normal weather conditions. 3) The predicted end-of-month supply reservoir contents figures assume normal weather after May 1st, 2023. 4) The differences between predicted and actual end-of-month supply reservoir contents are the result of normal estimation error of daily use, supply, evaporation, carriage losses and raw water deliveries. 5) Predicted supply reservoir contents last updated on May 1st, 2023. 6) Daily water figures are subject to change.

Lake Powell Report*

Colorado River Above Lake Powell Snowpack



Lake Powell Elevation (2001-Current)



* Denver Water gets half of its water supply from the Colorado River and closely monitors conditions at Lake Powell and within the greater Colorado River Basin.