



WATER WATCH REPORT

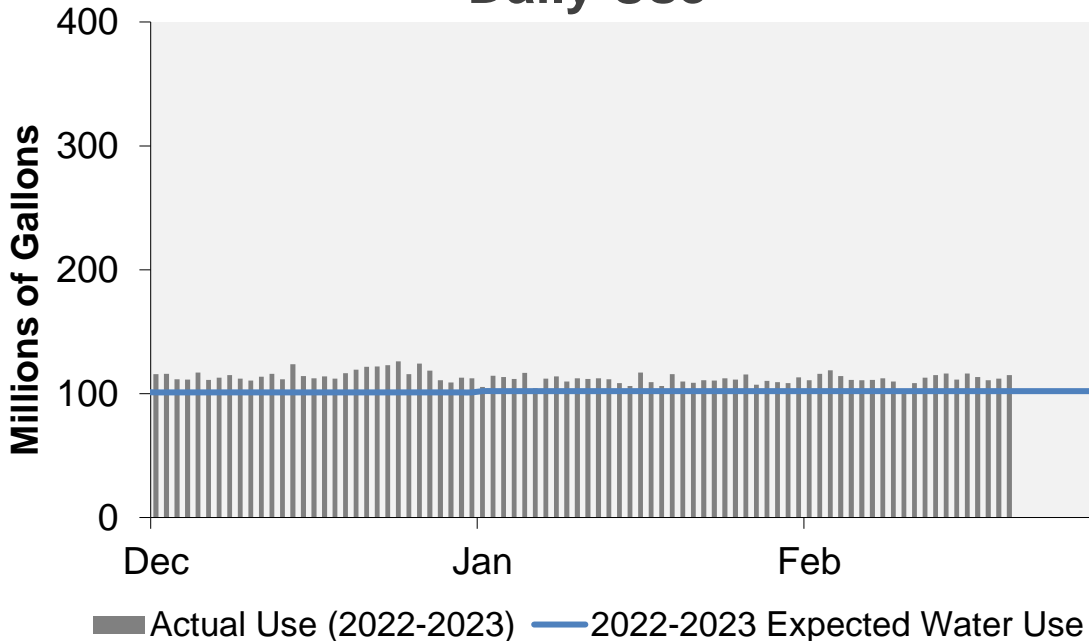
February 21, 2023

Supply Reservoir Contents

Reservoir	Capacity		Current Usable Contents (acre-feet)	Percent Full		
	(acre-feet)			Current	Last Year	Historical Median
	Total	Usable				
Antero	20,122	20,067	19,868	99%	99%	99%
Eleven Mile	97,779	97,779	99,315	102%	101%	102%
Cheesman	79,064	79,064	68,183	86%	81%	83%
Marston	19,108	13,133	7,499	57%	66%	52%
Strontia Springs	7,863	7,163	6,061	85%	83%	94%
Chatfield	28,709	12,415	9,605	77%	80%	94%
Dillon	257,304	249,095	201,479	81%	77%	89%
Gross*	41,811	29,811	6,506	22%	71%	43%
Ralston	10,776	7,276	5,921	81%	0%	54%
Meadow Creek	5,370	4,520	-	0%	67%	12%
Total	567,906	520,323	424,437	82%	81%	80%

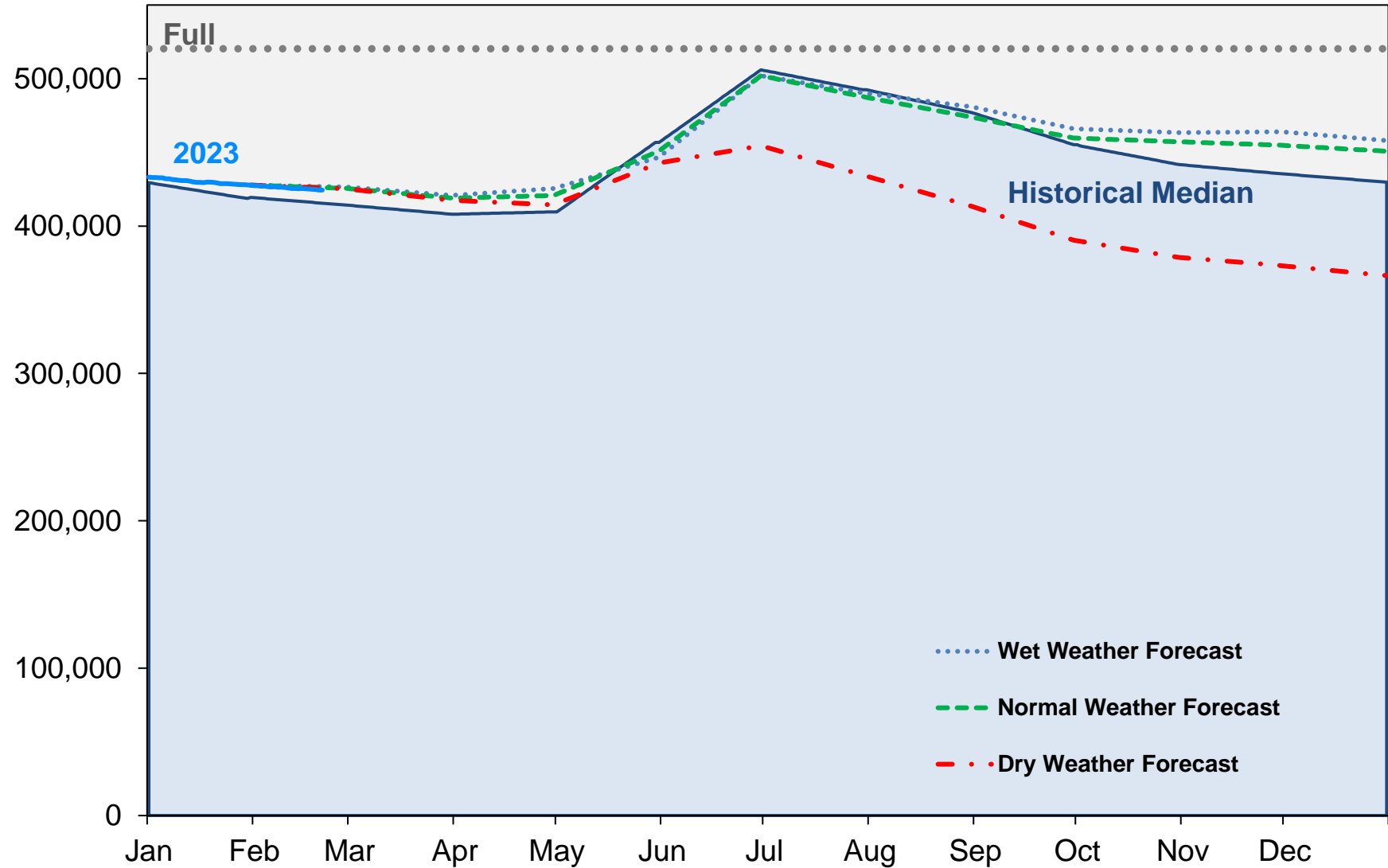
*Gross Reservoir storage is limited to 29,938 acre feet in total storage during construction activities. The percent full figures are based on the normal usable capacity of 29,811 acre feet.

Daily Use



Supply Reservoir Contents

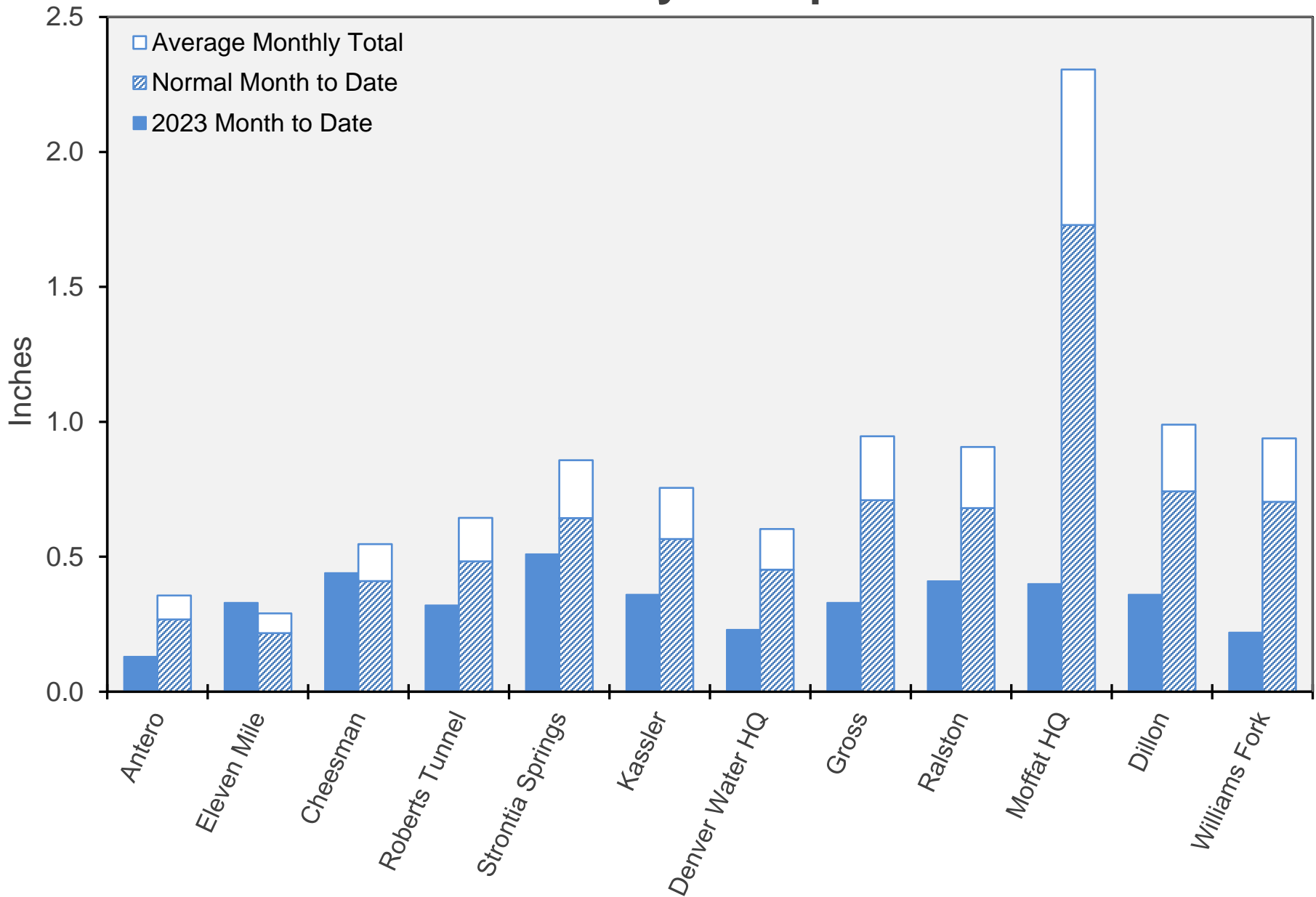
Acre-Feet



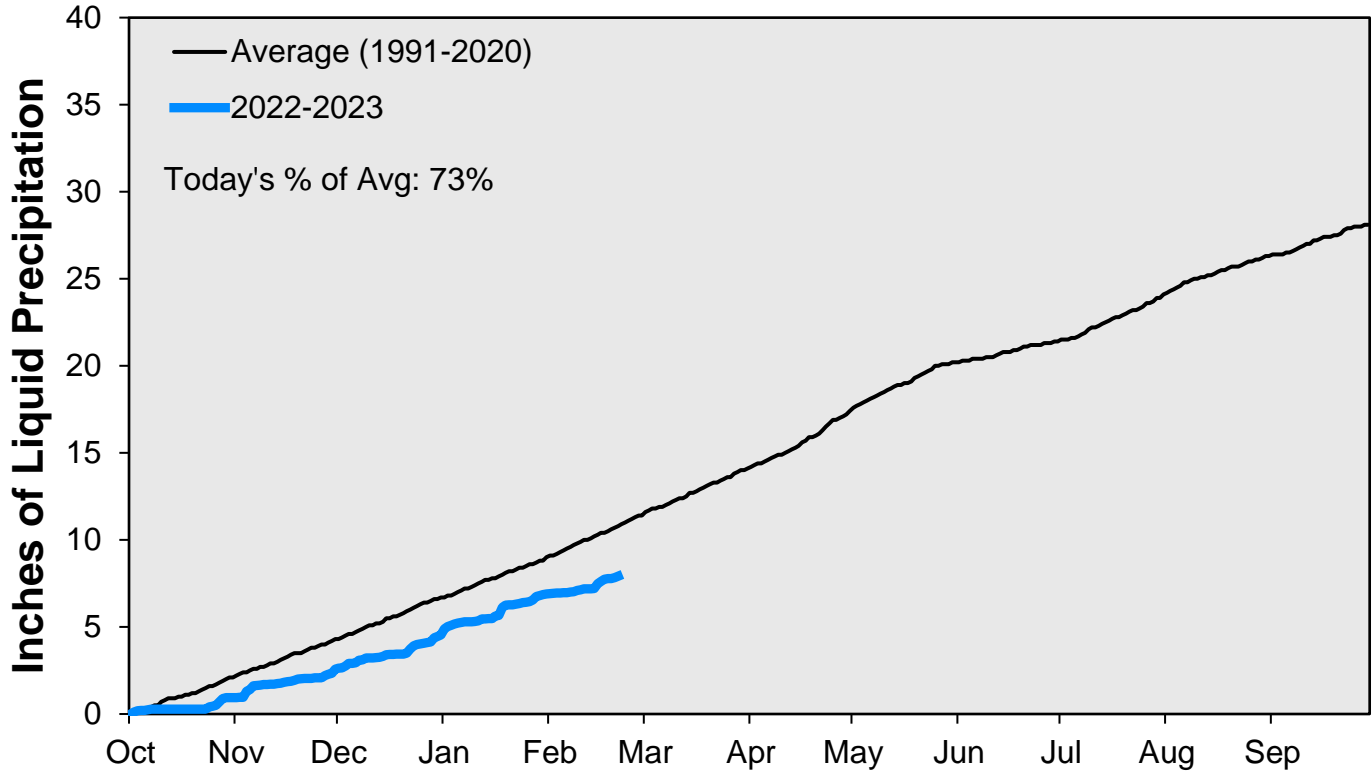
Note: Denver Water forecasts seasonal reservoir storage contents under dry future weather, normal future weather and wet future weather scenarios.

Gross Reservoir storage is limited to 29,938 acre feet in total storage during construction activities. The percent full figures are based on the normal usable capacity of 29,811 acre feet.

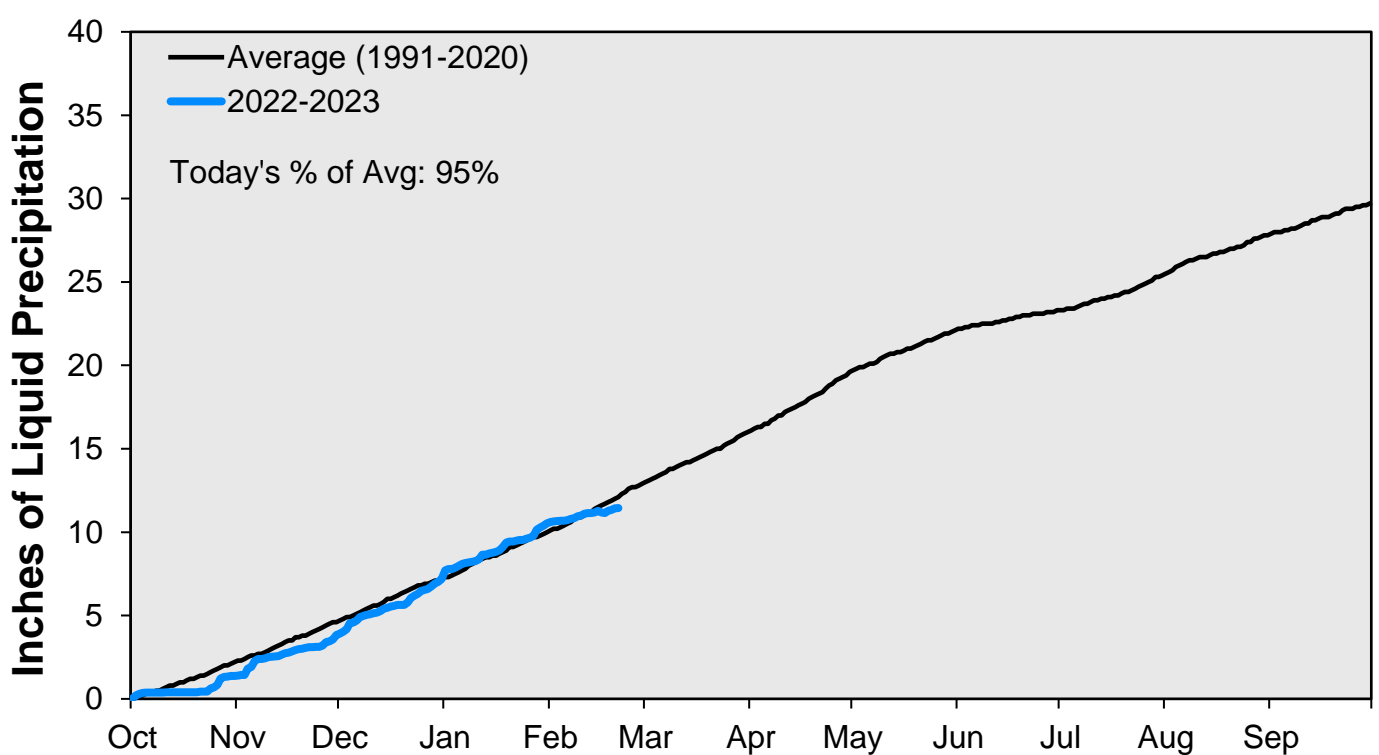
February Precipitation



CUMULATIVE PRECIPITATION: SOUTH PLATTE RIVER

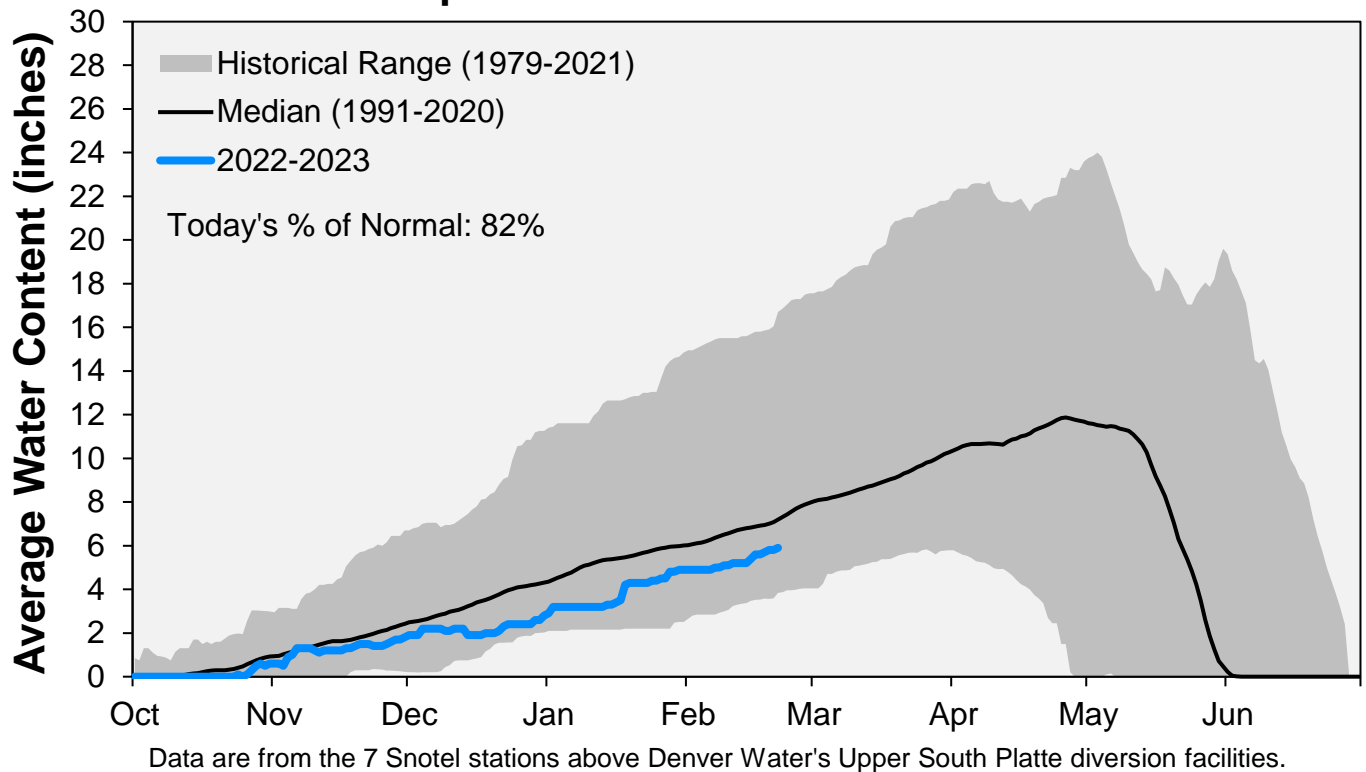


CUMULATIVE PRECIPITATION: COLORADO RIVER WATERSHED

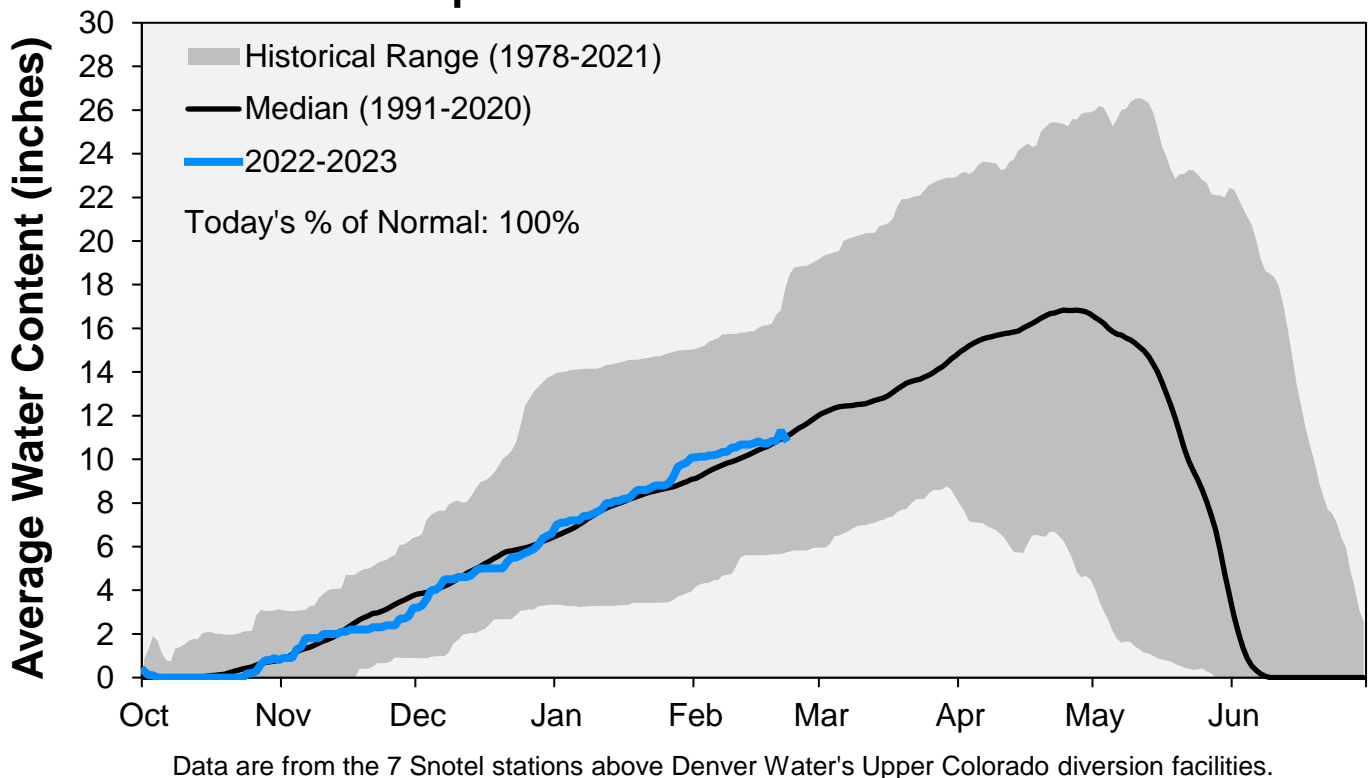


Data are from the 7 SNOTEL stations above Denver Water's Upper Colorado diversion facilities.

Snowpack: South Platte River Watershed



Snowpack: Colorado River Watershed



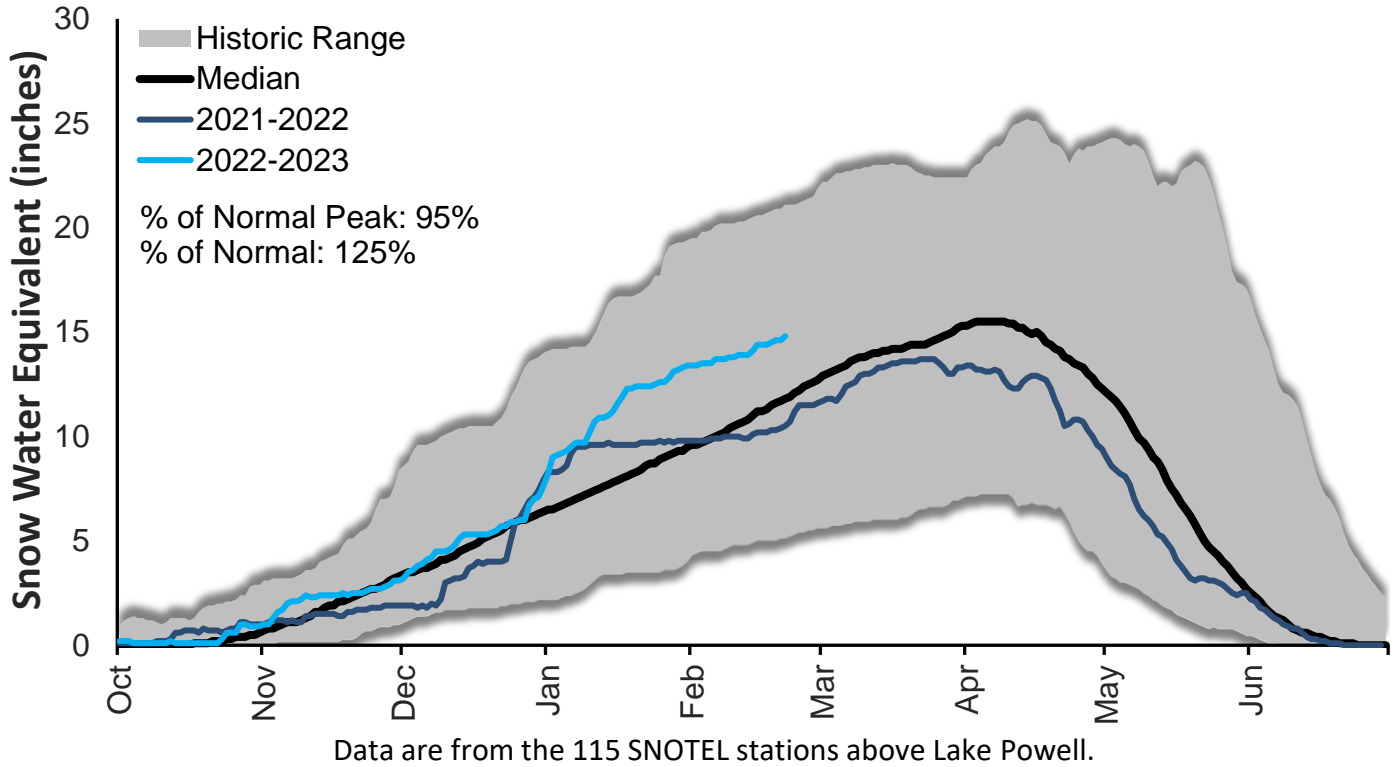
February 21, 2023

Denver Water Use and Reservoir Contents 2023													
	Jan	Feb	Mar	Apr	May	Jun	Jul	Aug	Sep	Oct	Nov	Dec	YTD-Avg
Predicted End-of-Month Supply Reservoir Contents (Full = 518,449 AF)	423,400												
Actual End-of-Month Supply Reservoir Contents (AF)	427,785												
Actual % Full	83%												
Historical Median % Full	81%	80%	79%	79%	88%	98%	95%	92%	88%	85%	84%	83%	
2023 Expected Daily Use (MG)	102	102	102	125	190	275	310	297	270	172	108	102	102
Actual Daily Use (MG)	1	105	111										
	2	115	116										
	3	113	119										
	4	112	114										
	5	117	111										
	6	104	111										
	7	112	111										
	8	114	112										
	9	110	110										
	D 10	112	103										
	A 11	112	108										
	Y 12	112	113										
	13	112	115										
	O 14	109	116										
	F 15	106	111										
	16	117	116										
	M 17	109	113										
	O 18	106	111										
	N 19	116	112										
	T 20	110	115										
	H 21	109											
	22	111											
	23	111											
	24	112											
	25	111											
	26	115											
	27	107											
	28	110											
	29	109											
	30	108											
	31	113											
Monthly Average	111	112											112
% of 2023 Expected Daily Use	109%	110%											109%

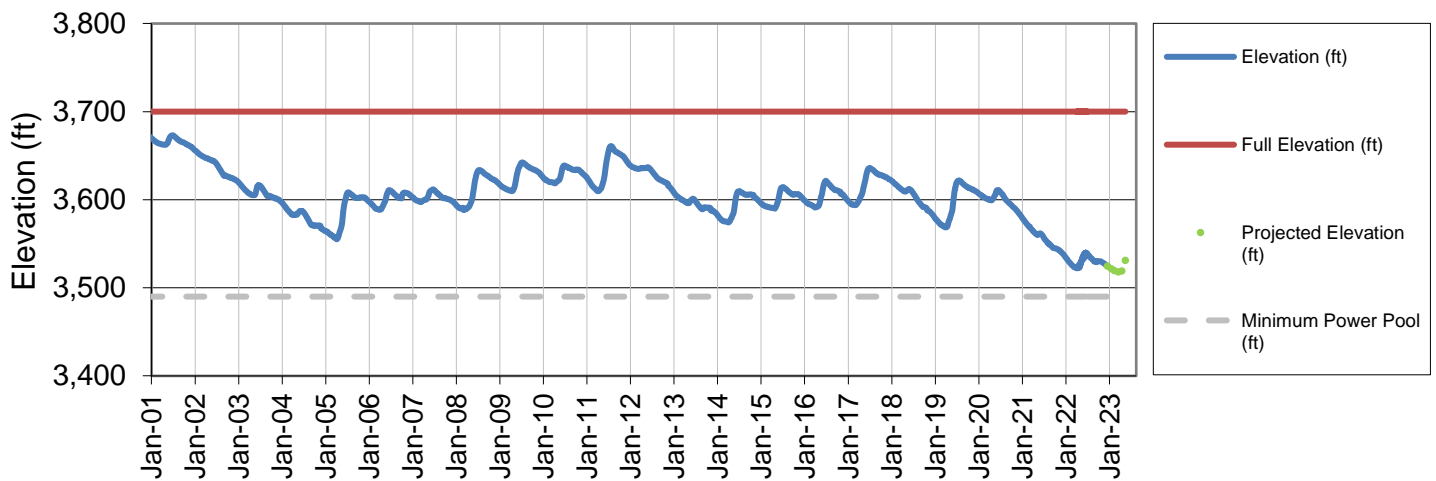
Notes: 1) "AF" denotes acre-feet. "MG" denotes million gallons. 2) Expected Daily Use is based on historical use with normal weather conditions. 3) The predicted end-of-month supply reservoir contents figures assume normal weather after February 6th, 2023. 4) The differences between predicted and actual end-of-month supply reservoir contents are the result of normal estimation error of daily use, supply, evaporation, carriage losses and raw water deliveries. 5) Predicted supply reservoir contents last updated on February 6th, 2023. 6) Daily water figures are subject to change.

Lake Powell Report*

Colorado River Above Lake Powell Snowpack



Lake Powell Elevation (2001-Current)



* Denver Water gets half of its water supply from the Colorado River and closely monitors conditions at Lake Powell and within the greater Colorado River Basin.