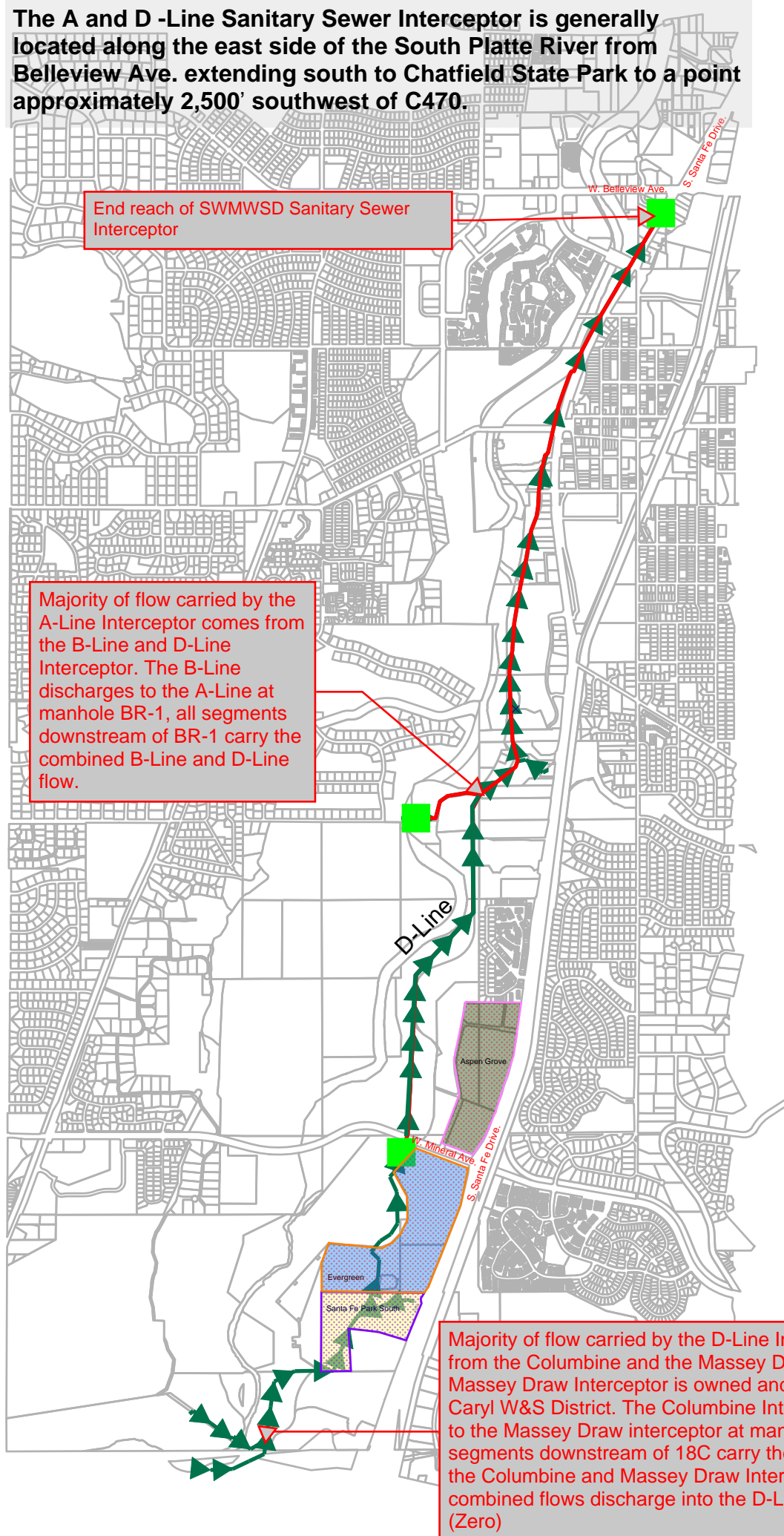


Manhole	Manhole	Capacity used with future flow & existing 33" diameter pipe	Length of Pipe	Capacity used with future flow & new 36" diameter pipe	% discount for capacity benefit	Cost/foot	Cost/segment	District Share	Toll Brothers Share
D-12	D-11.1	95.0%	194	72.9%	22.1%	\$ 750	\$ 145,500	\$ 32,156	\$ 113,345
D-11.1	D-11	55.5%	230	48.3%	7.2%	\$ 750	\$ 172,500	\$ 12,420	\$ 160,080
D-11	D-10.1	44.4%	46	39.0%		\$ 750	\$ 34,500	\$ 34,500	\$ -
D-10.1	D-10	95.0%	405	72.9%	22.1%	\$ 750	\$ 303,750	\$ 67,129	\$ 236,621
D-10	D-9	47.3%	448	41.5%		\$ 750	\$ 336,000	\$ 336,000	\$ -
D-9	D-8	61.9%	478	53.4%	8.5%	\$ 750	\$ 358,500	\$ 30,473	\$ 328,028
D-8	AG-1	55.5%	302	48.3%	7.2%	\$ 750	\$ 226,500	\$ 16,308	\$ 210,192
Total linear feet			2103	Cost for pipe replacement			\$ 1,577,250	\$ 528,985	\$ 1,048,265
Cost for manhole rehab (cost per MH)					8	\$ 15,000	\$ 120,000	\$ 60,000	\$ 60,000
Contingency for 2025 construction timeframe						30%	\$ 509,175	\$ 176,695	\$ 332,480
Total project for outfall replacement (pipe + MHs)							\$ 2,206,425	\$ 765,680	\$ 1,440,745

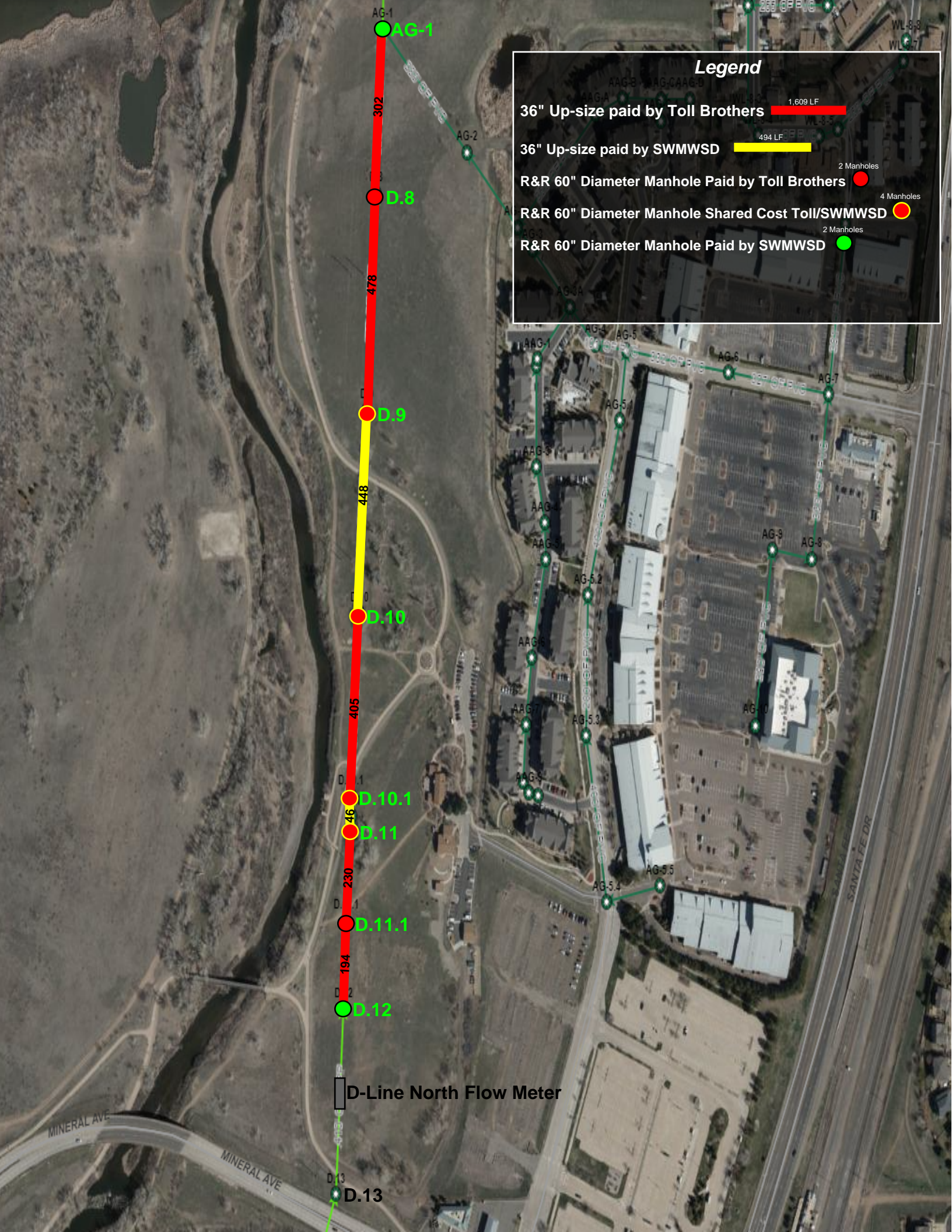
The A and D -Line Sanitary Sewer Interceptor is generally located along the east side of the South Platte River from Bellevue Ave. extending south to Chatfield State Park to a point approximately 2,500' southwest of C470.



End reach of SWMWS D Sanitary Sewer Interceptor

Majority of flow carried by the A-Line Interceptor comes from the B-Line and D-Line Interceptor. The B-Line discharges to the A-Line at manhole BR-1, all segments downstream of BR-1 carry the combined B-Line and D-Line flow.

Majority of flow carried by the D-Line Interceptor comes from the Columbine and the Massey Draw Interceptor. The Massey Draw Interceptor is owned and maintained by Ken Caryl W&S District. The Columbine Interceptor discharges to the Massey Draw interceptor at manhole 18C. All segments downstream of 18C carry the combined flow of the Columbine and Massey Draw Interceptor, these combined flows discharge into the D-Line at manhole 0 (Zero)



Legend

- 36" Up-size paid by Toll Brothers 1,609 LF
- 36" Up-size paid by SWMWSD 494 LF
- R&R 60" Diameter Manhole Paid by Toll Brothers 2 Manholes
- R&R 60" Diameter Manhole Shared Cost Toll/SWMWSD 4 Manholes
- R&R 60" Diameter Manhole Paid by SWMWSD 2 Manholes

AG-1

302

478

448

405

46

230

194

D.13

D.12

D.11.1

D.11

D.10.1

D.10

D.9

D.8

D.7

D.6

D.5

D.4

D.3

D.2

D.1

D.0

D.0

D.0

D.0

D.0

D.0

AG-1

AG-2

AAG-1

AAG-2

AAG-3

AAG-4

AAG-5

AAG-6

AAG-7

AAG-8

AAG-9

AAG-10

AAG-11

AAG-12

AAG-13

AAG-14

AAG-15

AAG-16

AAG-17

AAG-18

AAG-19

AAG-20

AAG-21

AAG-22

AAG-23

AAG-24

AAG-25

AG-4

AG-5

AG-5

AG-5.2

AG-5.3

AG-5.4

AG-5.5

AG-6

AG-7

AG-8

AG-8

AG-9

AG-10

AG-11

AG-12

AG-13

AG-14

AG-15

AG-16

AG-17

AG-18

AG-19

AG-20

AG-21

AG-22

SANTA FE DR

MINERAL AVE

MINERAL AVE

D-Line North Flow Meter