



## WATER WATCH REPORT

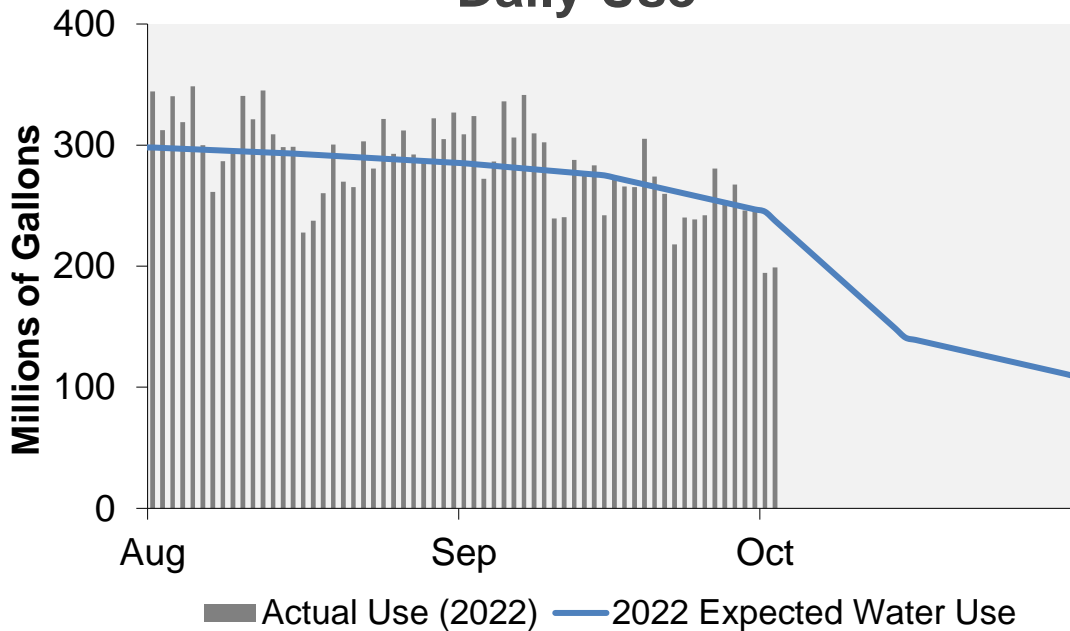
October 3, 2022

### Supply Reservoir Contents

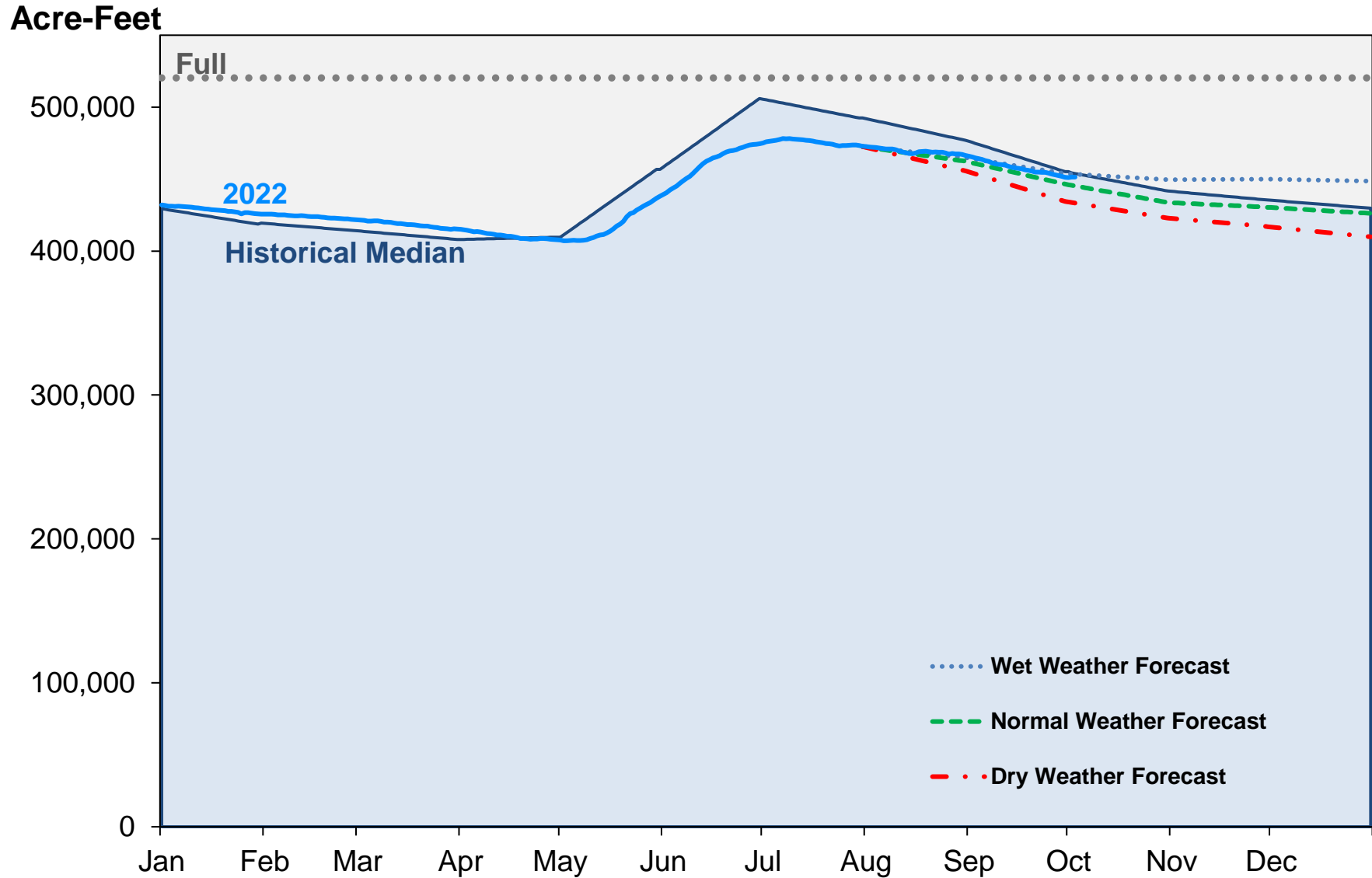
Reservoir	Capacity		Current Usable Contents (acre-feet)	Percent Full		
	(acre-feet)			Current	Last Year	Historical Median
	Total	Usable				
Antero	20,122	20,067	19,846	99%	98%	99%
Eleven Mile	97,779	97,779	100,347	103%	102%	102%
Cheesman	79,064	79,064	74,188	94%	96%	85%
Marston	19,108	13,133	8,427	64%	83%	48%
Strontia Springs	7,863	7,163	6,487	91%	88%	93%
Chatfield	28,709	12,415	3,927	32%	34%	48%
Dillon	257,304	249,095	214,794	86%	85%	96%
Gross*	41,811	29,811	15,577	52%	81%	78%
Ralston	10,776	7,276	6,754	93%	0%	69%
Meadow Creek	5,370	4,520	1,051	23%	45%	42%
<b>Total</b>	<b>567,906</b>	<b>520,323</b>	<b>451,397</b>	<b>87%</b>	<b>87%</b>	<b>88%</b>

\*Gross Reservoir storage is limited to 29,938 acre feet in total storage during construction activities. The percent full figures are based on the normal usable capacity of 29,811 acre feet.

### Daily Use



# Supply Reservoir Contents

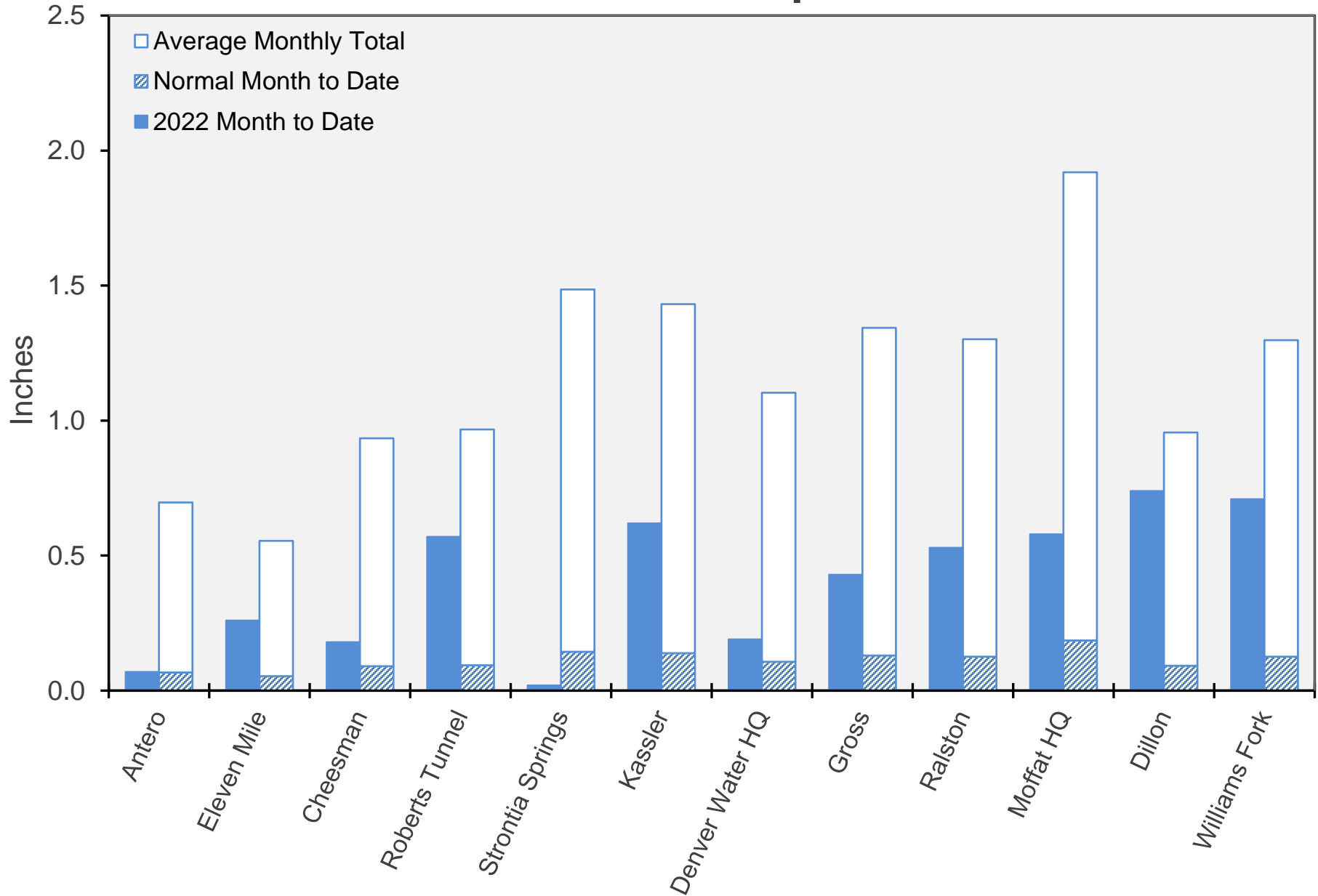


Note: Denver Water forecasts seasonal reservoir storage contents under dry future weather, normal future weather and wet future weather scenarios.

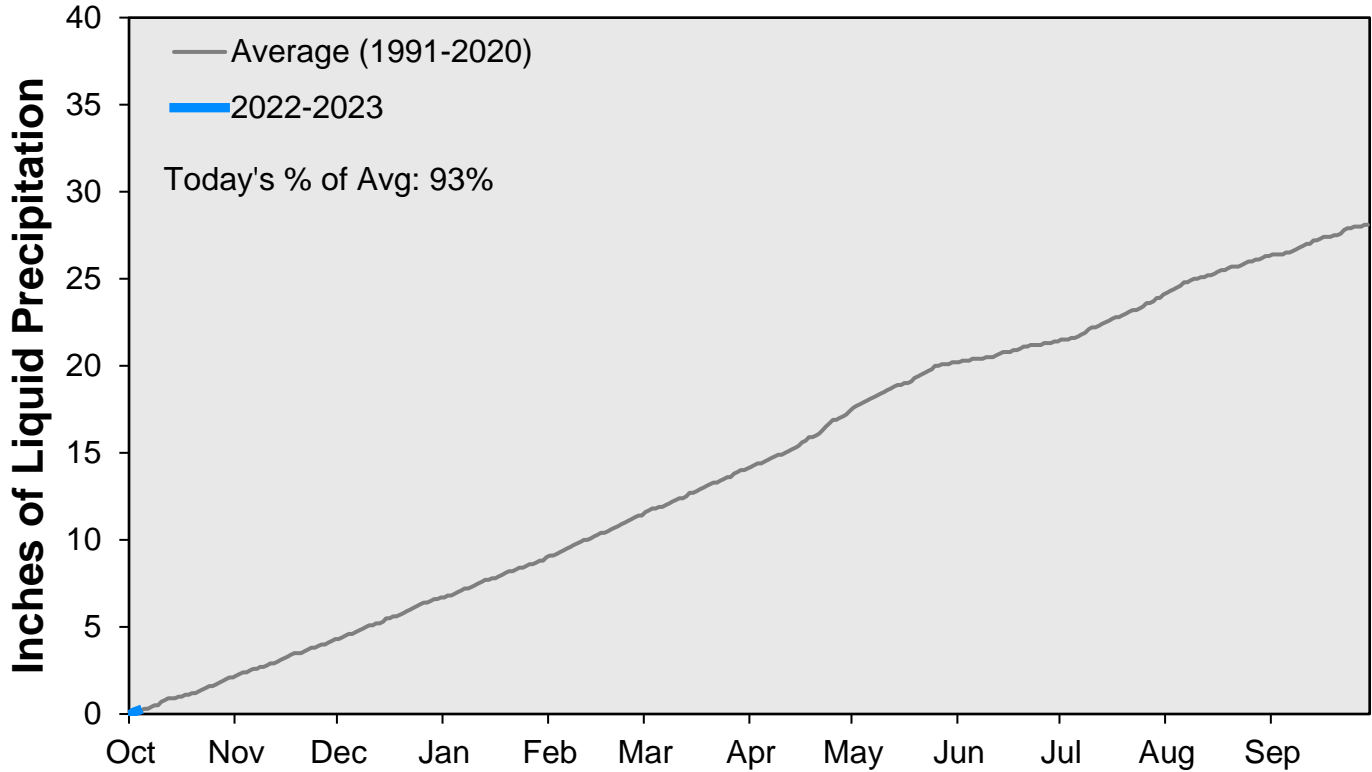
Gross Reservoir storage is limited to 29,938 acre feet in total storage during construction activities. The percent full figures are based on the normal usable capacity of 29,811 acre feet.

October 3, 2022

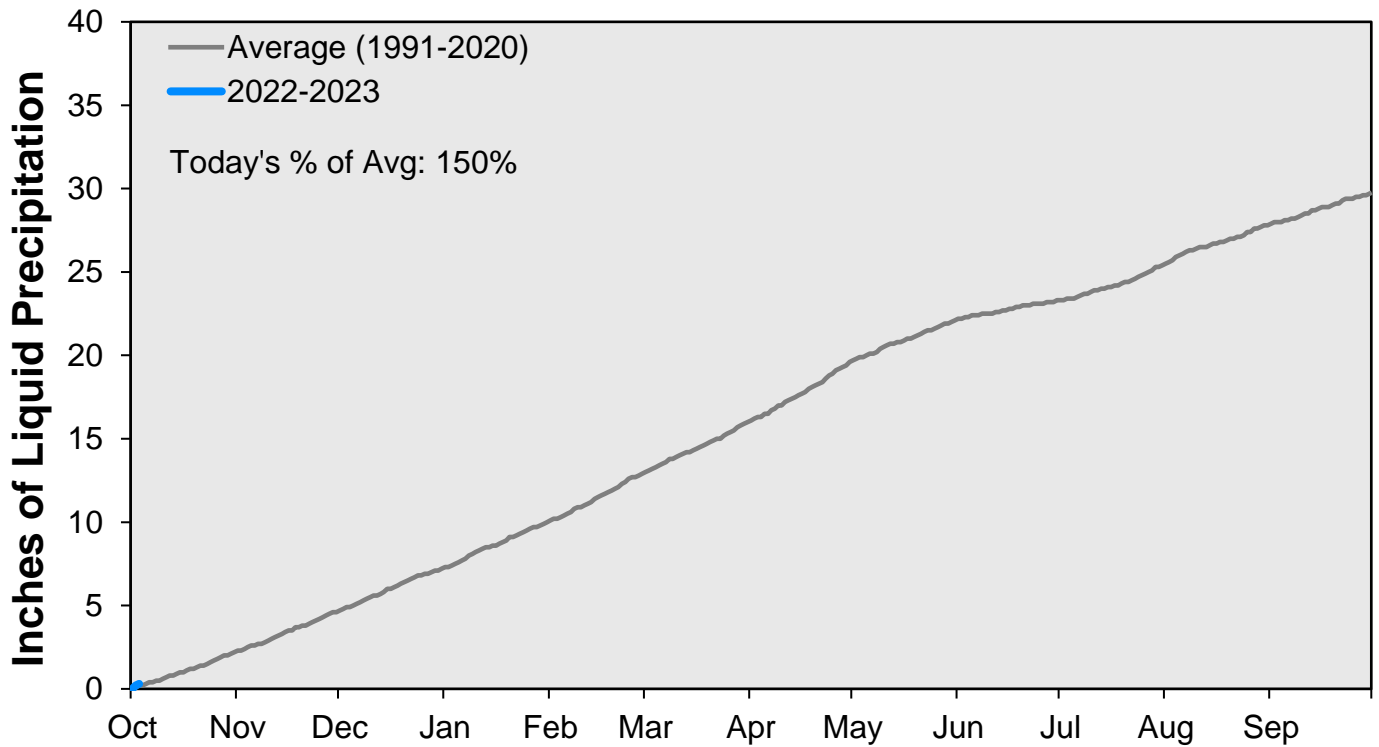
# October Precipitation



### CUMULATIVE PRECIPITATION: SOUTH PLATTE RIVER

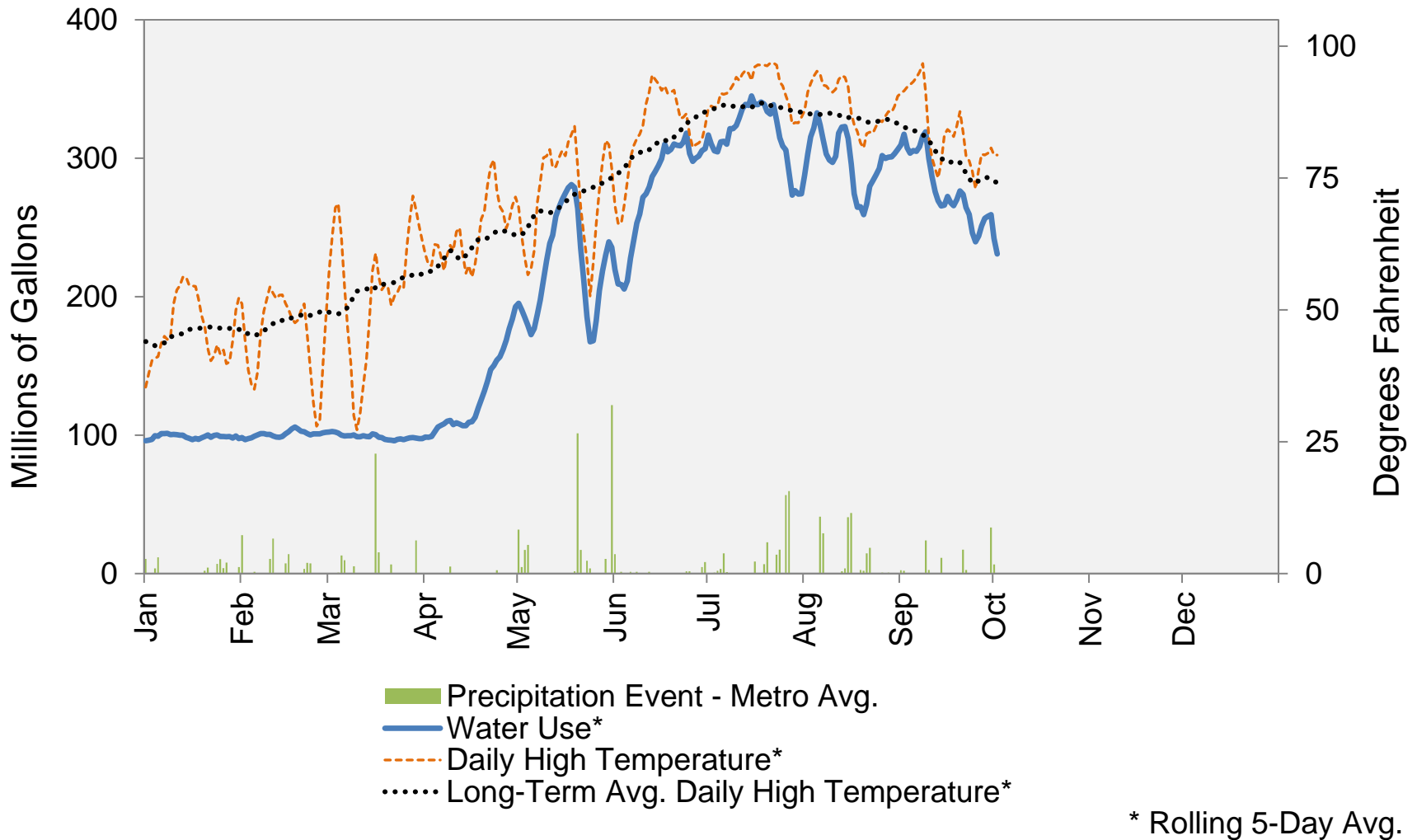


### CUMULATIVE PRECIPITATION: COLORADO RIVER WATERSHED



Data are from the 7 SNOTEL stations above Denver Water's Upper Colorado diversion facilities.

## 2022 Water Use and Weather Conditions



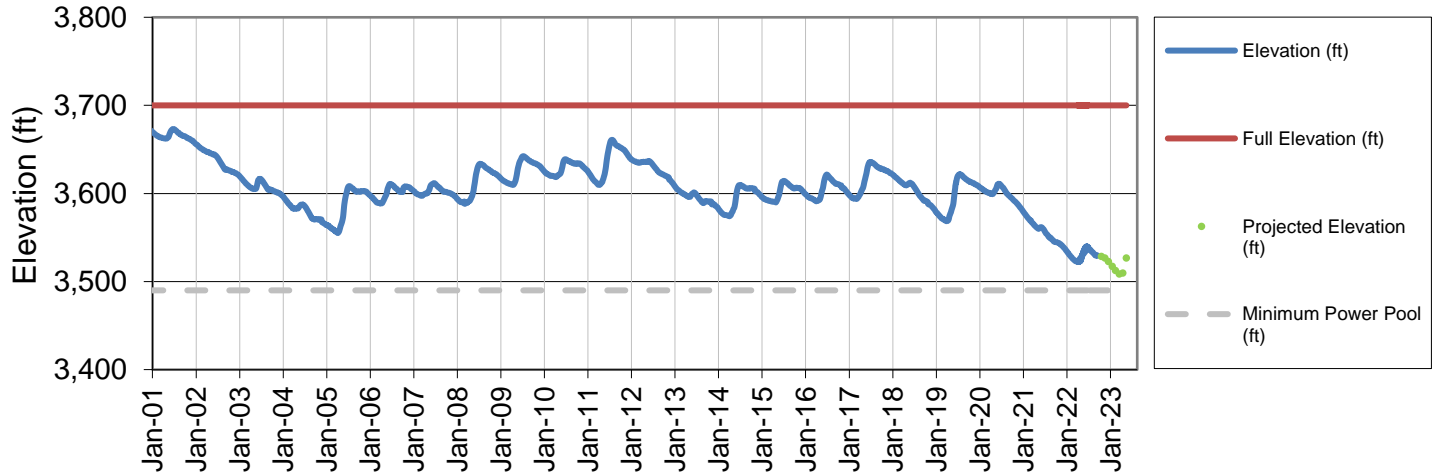
October 3, 2022

Denver Water Use and Reservoir Contents 2022													
	Jan	Feb	Mar	Apr	May	Jun	Jul	Aug	Sep	Oct	Nov	Dec	YTD-Avg
Predicted End-of-Month Supply Reservoir Contents (Full = 518,449 AF)	441,900												
Actual End-of-Month Supply Reservoir Contents (AF)	425,595	421,903	415,083	407,905	438,115	474,473	472,785	466,519	451,255				
Actual % Full	82%	81%	80%	79%	85%	92%	91%	90%	87%				
Historical Median % Full	81%	80%	79%	79%	88%	98%	95%	92%	88%	85%	84%	83%	
2022 Expected Daily Use (MG)	105	104	102	120	157	257	298	292	270	158	105	101	190
Actual Daily Use (MG)	1	92	98	102	102	192	182	318	344	309	194		
	2	100	95	101	102	169	186	304	312	324	199		
	3	100	100	101	99	166	223	291	340	272			
	4	105	105	100	109	165	229	338	319	286			
	5	99	97	95	118	171	237	308	348	336			
	6	101	103	100	108	214	263	321	300	306			
	7	100	100	102	107	222	250	294	261	342			
	8	101	100	101	108	217	286	347	287	310			
	9	101	102	103	112	236	262	337	297	302			
D	10	99	98	88	103	241	298	320	341	239			
A	11	100	97	100	115	275	276	348	321	240			
Y	12	98	96	105	102	253	275	326	345	288			
	13	101	99	98	103	285	323	363	309	276			
O	14	93	105	102	112	268	281	333	298	283			
F	15	96	108	99	116	269	319	355	299	242			
	16	96	105	97	116	297	301	317	228	272			
M	17	103	106	96	118	273	327	326	238	266			
O	18	96	106	97	137	297	295	373	260	265			
N	19	100	98	96	140	257	290	326	301	305			
T	20	100	99	97	148	194	338	328	270	274			
H	21	102	102	96	152	156	297	307	265	260			
	22	95	100	94	160	153	325	360	303	218			
	23	102	102	102	151	167	308	316	281	240			
	24	102	102	98	159	167	323	262	322	239			
	25	95	99	93	160	198	265	299	293	242			
	26	101	103	101	178	228	269	293	312	281			
	27	94	104	97	194	262	336	277	292	254			
	28	103	103	102	192	239	316	235	286	268			
	29	96		96	194	224	342	279	322	246			
	30	102		92	204	245	272	286	305	248			
	31	91		101		208		294	327				
Monthly Average	99	101	98	134	223	283	315	301	274	197			204
% of 2022 Expected Daily Use	94%	97%	97%	112%	142%	110%	106%	103%	102%	124%			107%

Notes: 1) "AF" denotes acre-feet. "MG" denotes million gallons. 2) Expected Daily Use is based on historical use with normal weather conditions. 3) The predicted end-of-month supply reservoir contents figures assume normal weather after October 3<sup>rd</sup>, 2022. 4) The differences between predicted and actual end-of-month supply reservoir contents are the result of normal estimation error of daily use, supply, evaporation, carriage losses and raw water deliveries. 5) Predicted supply reservoir contents last updated on October 3<sup>rd</sup>, 2022. 6) Daily water figures are subject to change.

# Lake Powell Report\*

## Lake Powell Elevation (2001-Current)



\* Denver Water gets half of its water supply from the Colorado River and closely monitors conditions at Lake Powell and within the greater Colorado River Basin.