



## WATER WATCH REPORT

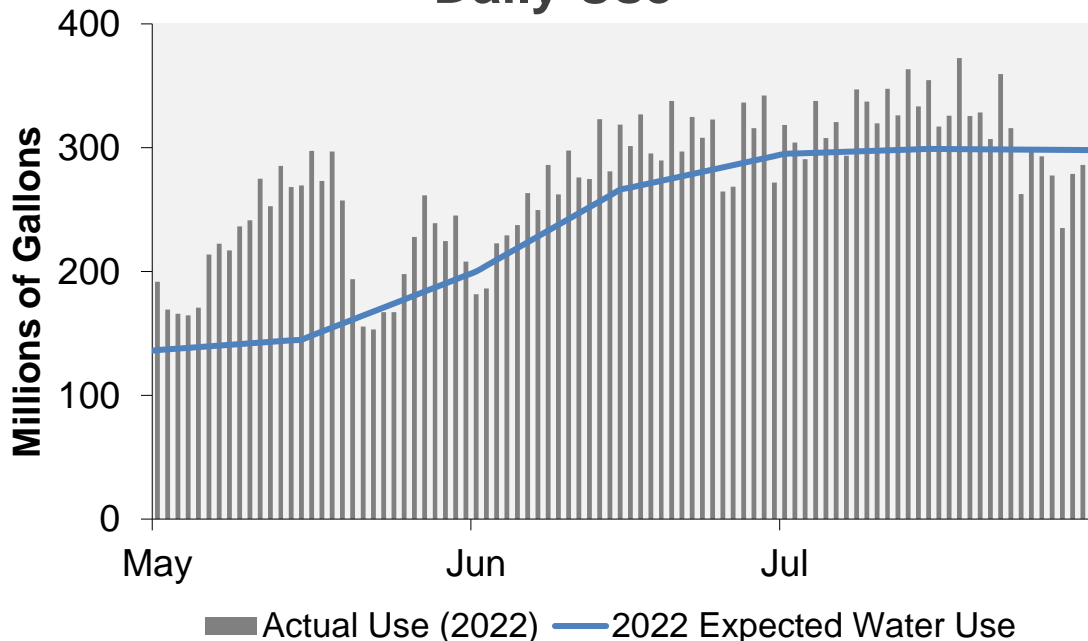
August 1, 2022

### Supply Reservoir Contents

Reservoir	Capacity		Current Usable Contents (acre-feet)	Percent Full		
	(acre-feet)			Current	Last Year	Historical Median
	Total	Usable				
Antero	20,122	20,067	20,064	100%	99%	100%
Eleven Mile	97,779	97,779	99,795	102%	102%	103%
Cheesman	79,064	79,064	77,432	98%	99%	98%
Marston	19,108	13,133	9,338	71%	75%	76%
Strontia Springs	7,863	7,163	5,869	82%	87%	94%
Chatfield	28,709	12,415	5,129	41%	38%	74%
Dillon	257,304	249,095	228,531	92%	101%	100%
Gross*	41,811	29,811	15,652	53%	90%	94%
Ralston	10,776	7,276	6,514	90%	63%	91%
Meadow Creek	5,370	4,520	4,263	94%	71%	87%
<b>Total</b>	<b>567,906</b>	<b>520,323</b>	<b>472,587</b>	<b>91%</b>	<b>97%</b>	<b>95%</b>

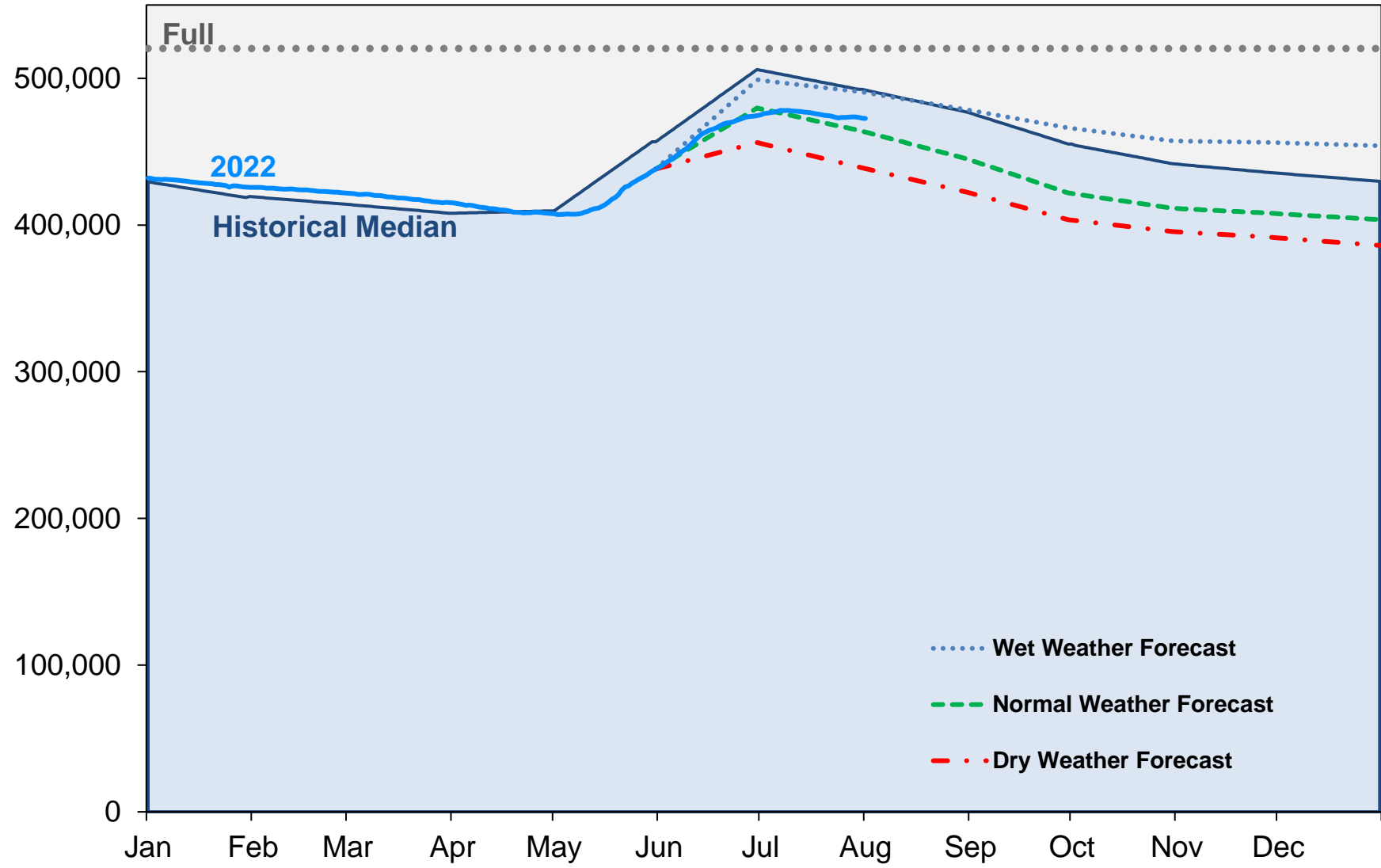
\*Gross Reservoir storage is limited to 29,938 acre feet in total storage during construction activities. The percent full figures are based on the normal usable capacity of 29,811 acre feet.

### Daily Use



# Supply Reservoir Contents

Acre-Feet

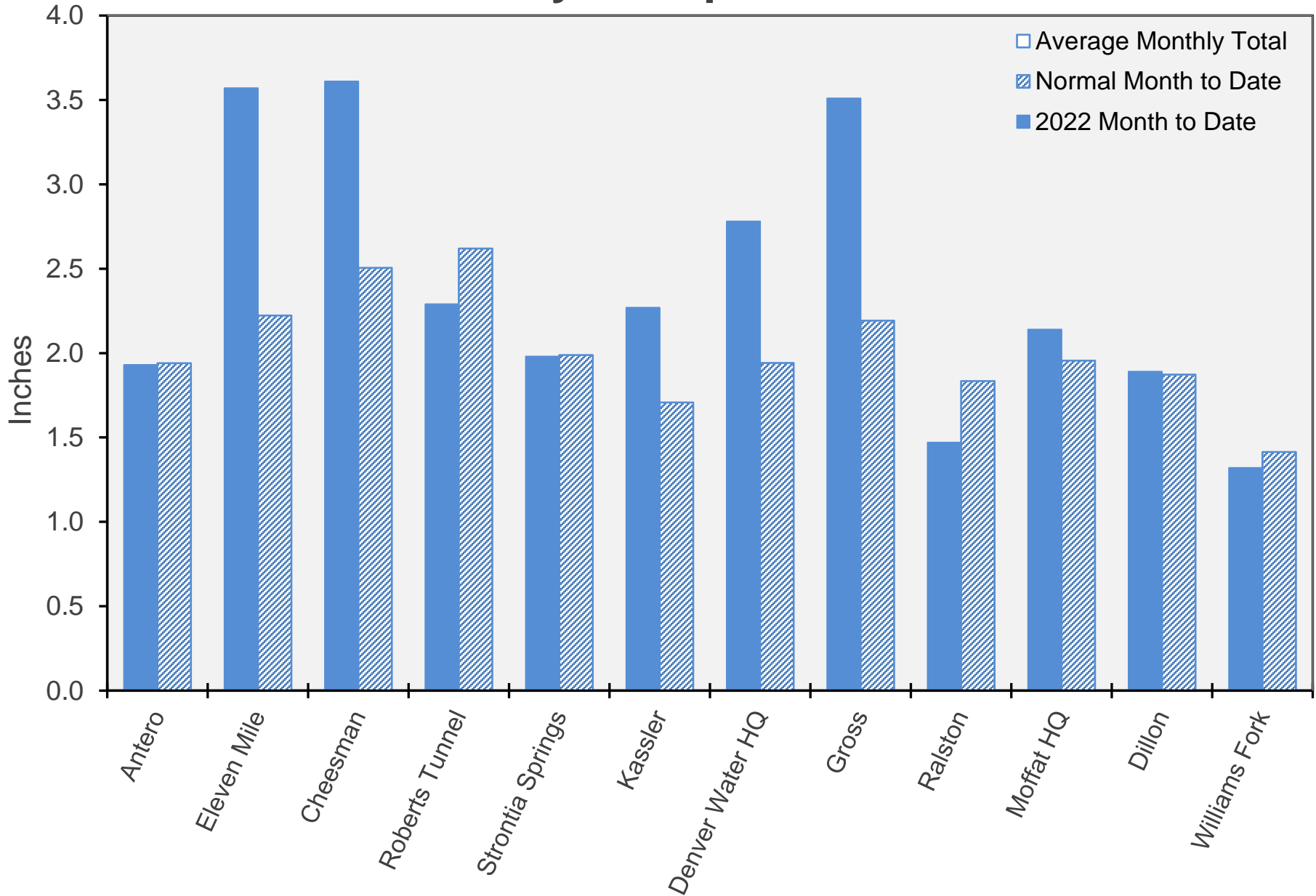


Note: Denver Water forecasts seasonal reservoir storage contents under dry future weather, normal future weather and wet future weather scenarios.

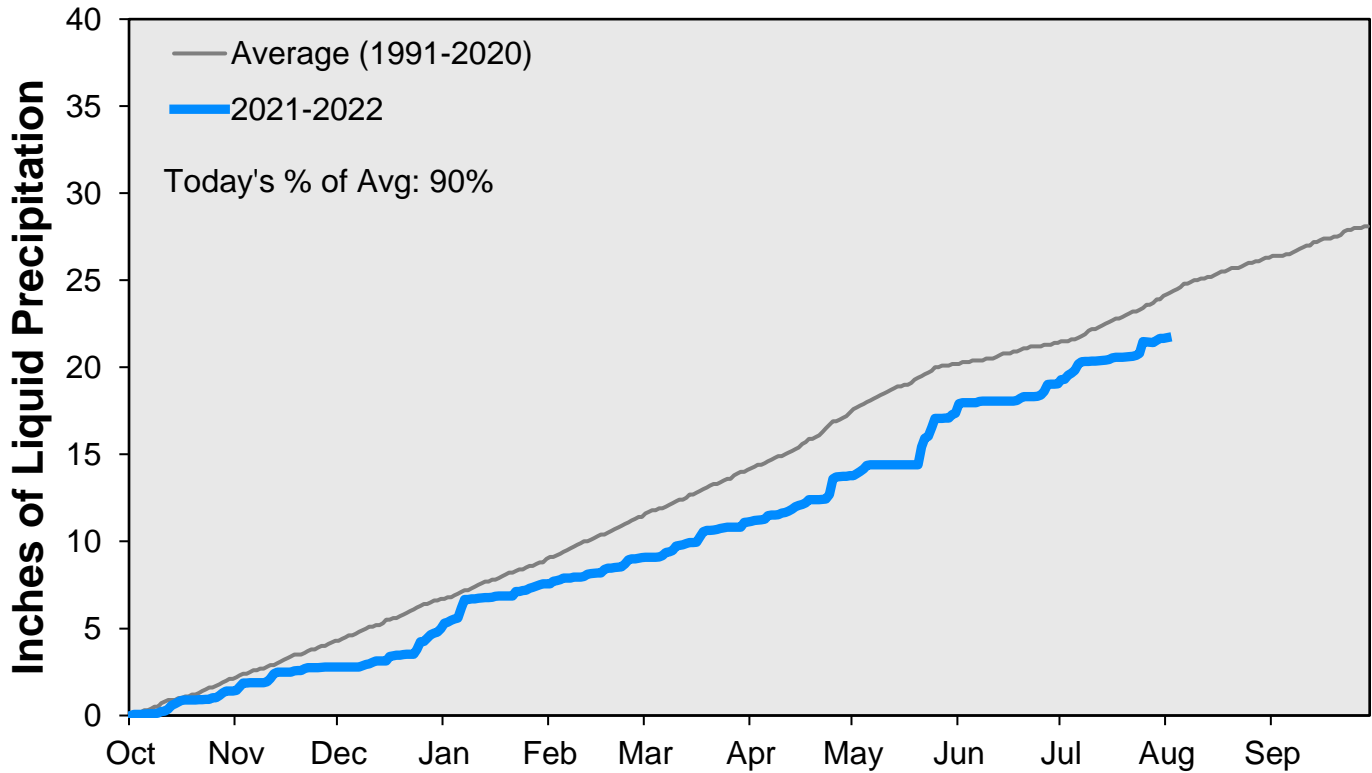
Gross Reservoir storage is limited to 29,938 acre feet in total storage during construction activities. The percent full figures are based on the normal usable capacity of 29,811 acre feet.

August 1, 2022

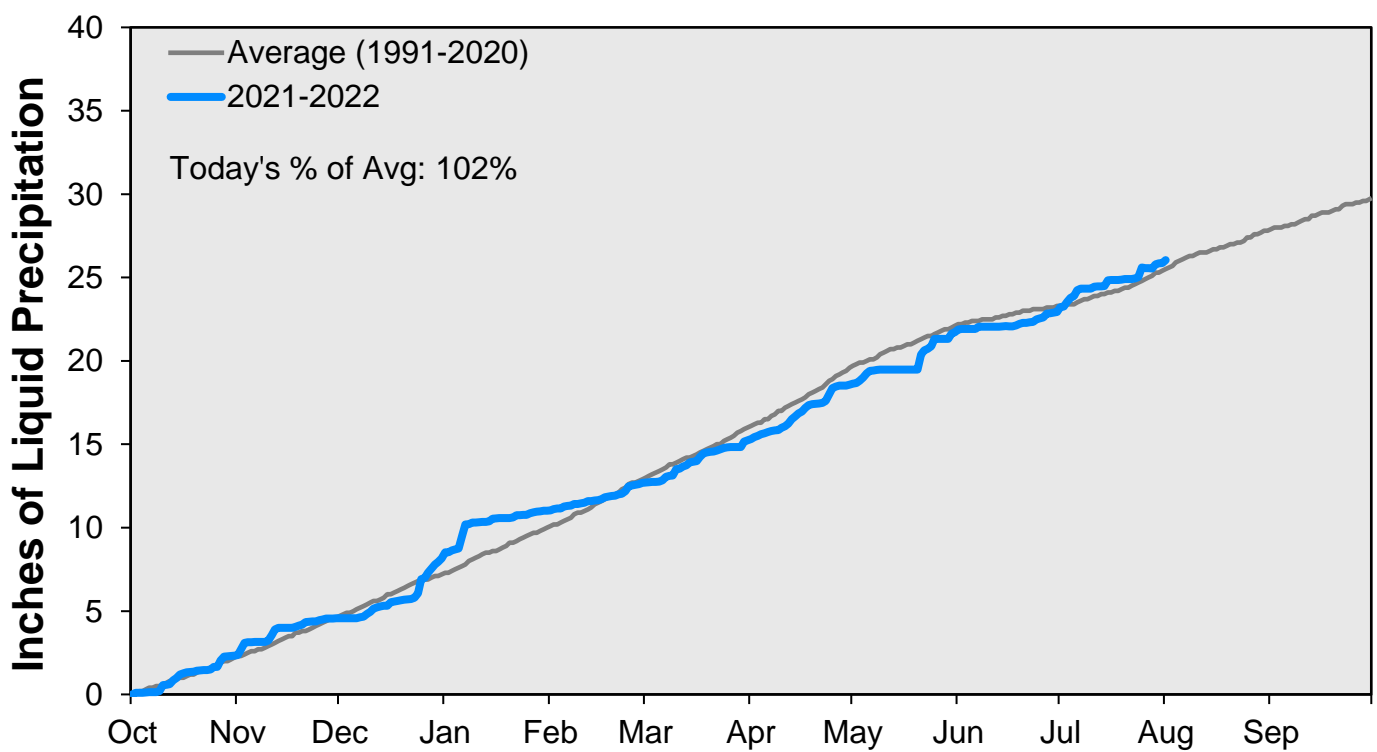
# July Precipitation



### CUMULATIVE PRECIPITATION: SOUTH PLATTE RIVER

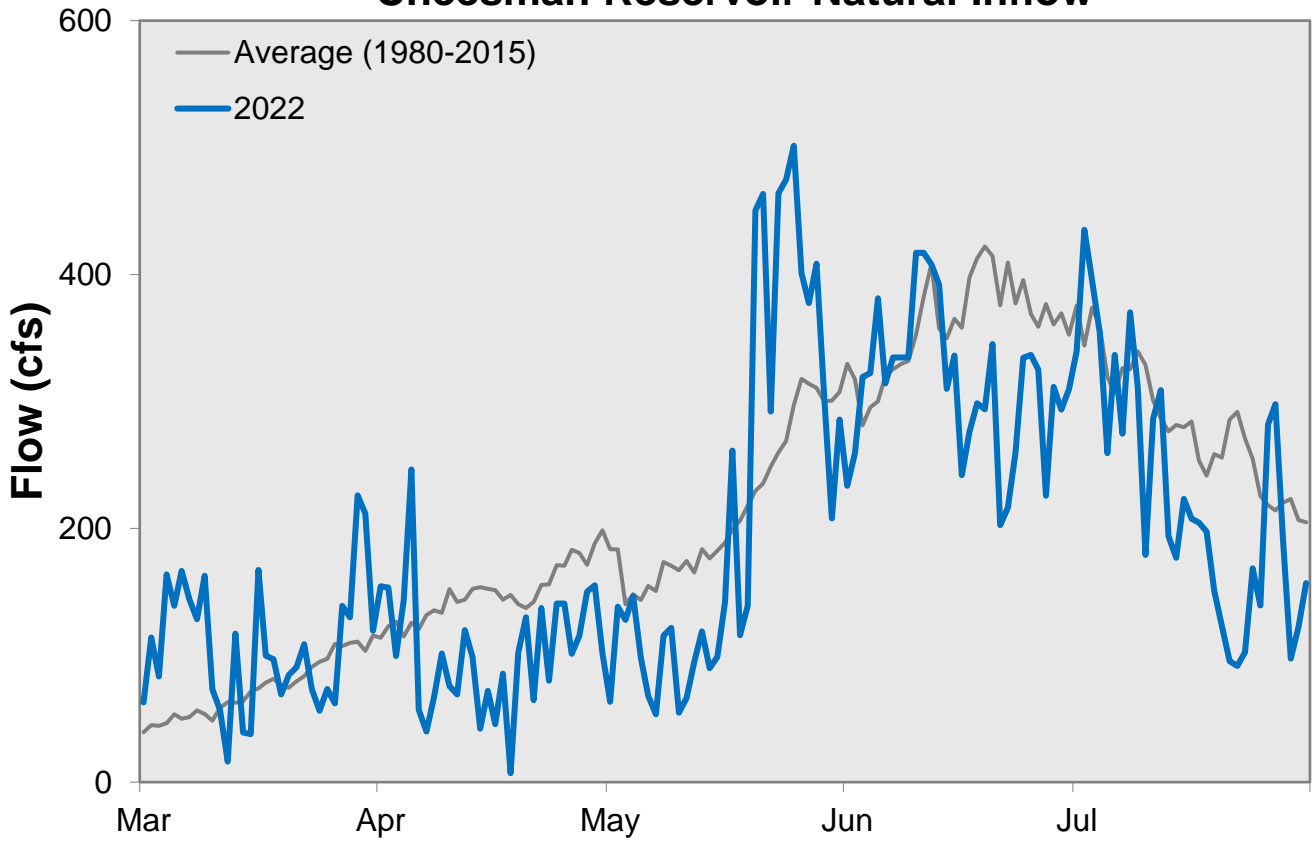


### CUMULATIVE PRECIPITATION: COLORADO RIVER WATERSHED

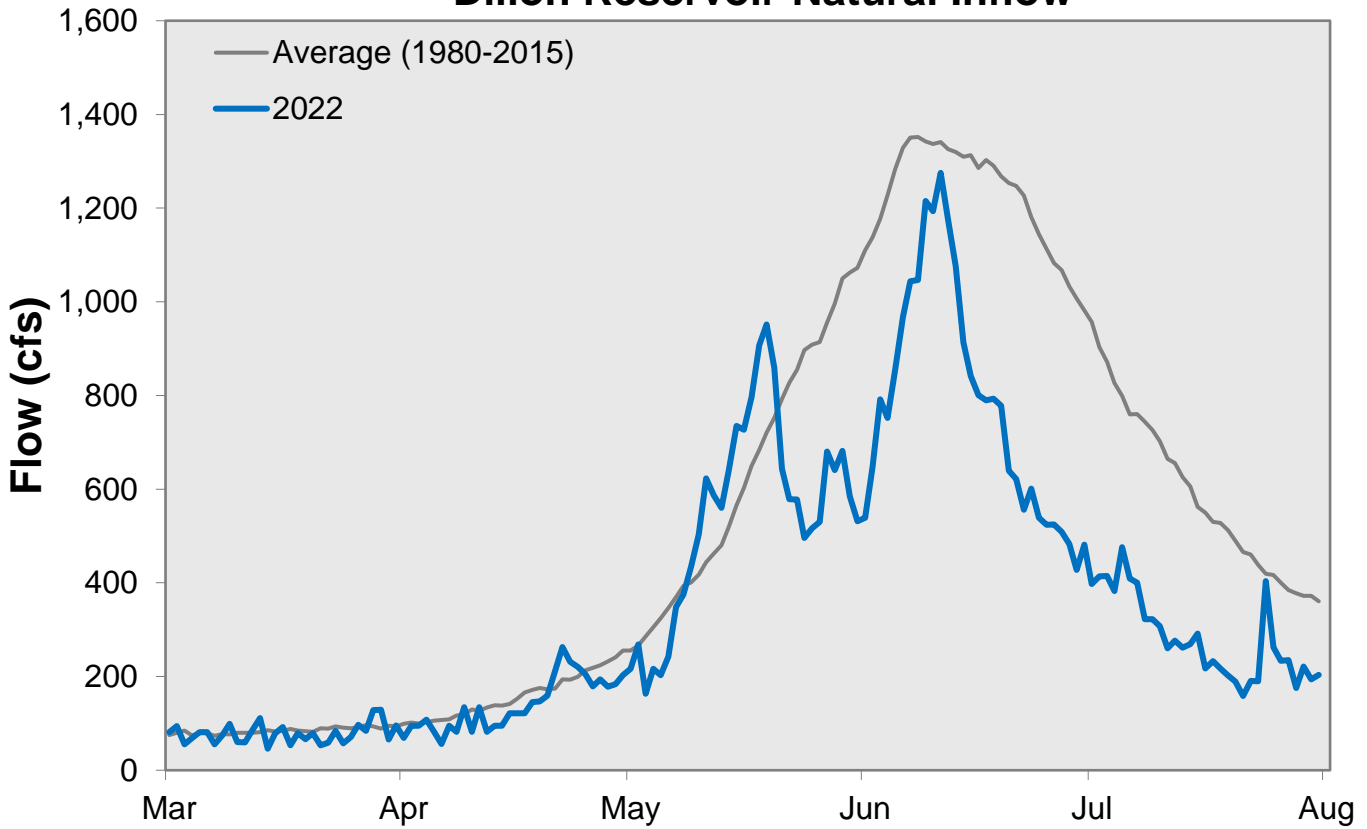


Data are from the 7 SNOTEL stations above Denver Water's Upper Colorado diversion facilities.

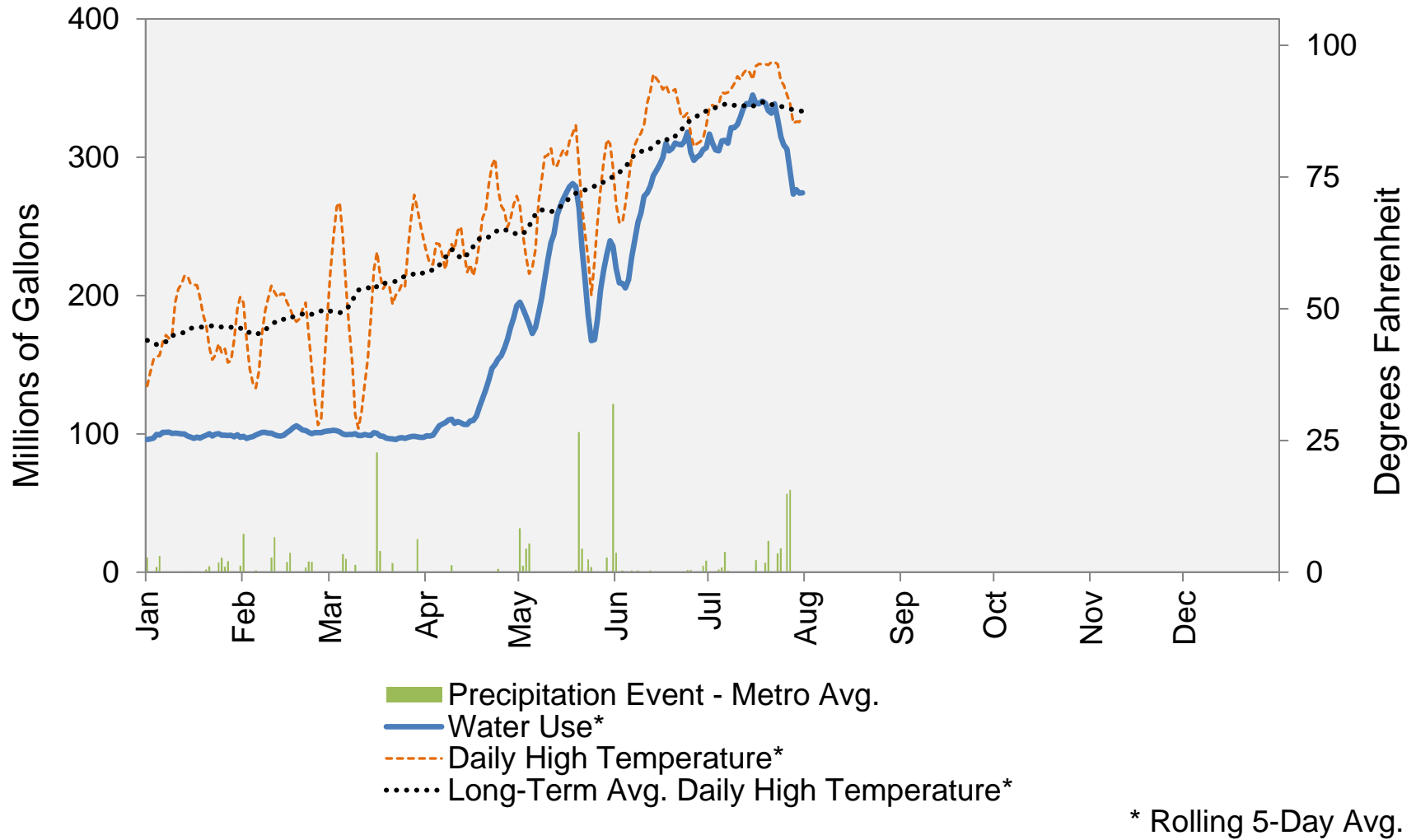
### Cheesman Reservoir Natural Inflow



### Dillon Reservoir Natural Inflow



## 2022 Water Use and Weather Conditions



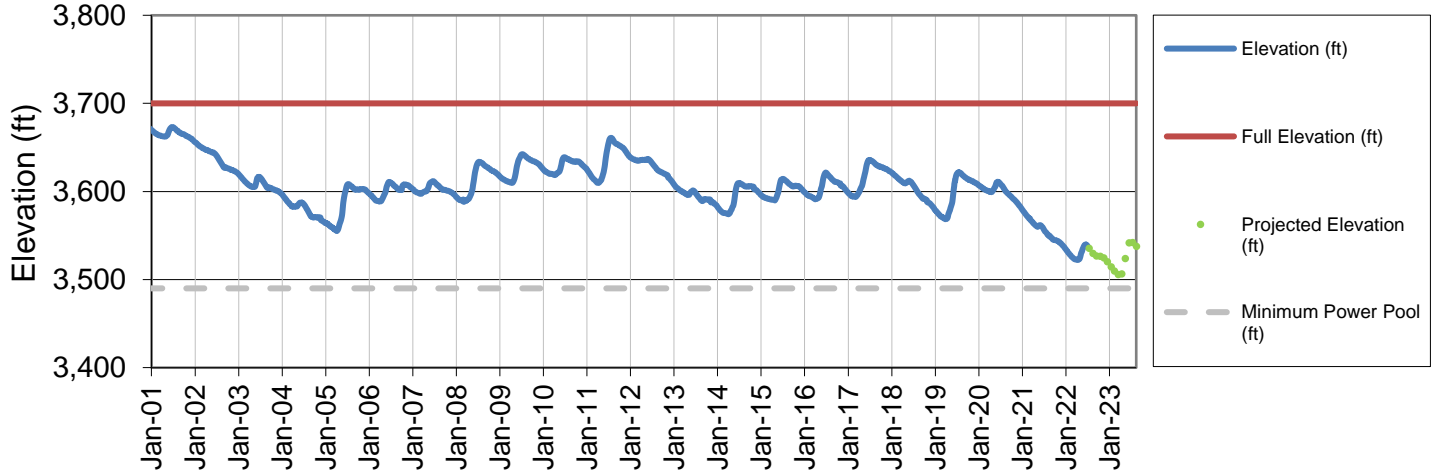
August 1, 2022

Denver Water Use and Reservoir Contents 2022													
	Jan	Feb	Mar	Apr	May	Jun	Jul	Aug	Sep	Oct	Nov	Dec	YTD-Avg
Predicted End-of-Month Supply Reservoir Contents (Full = 518,449 AF)	442,700												
Actual End-of-Month Supply Reservoir Contents (AF)	425,595	421,903	415,083	407,905	438,115	474,473	472,785						
Actual % Full	82%	81%	80%	79%	85%	92%	91%						
Historical Median % Full	81%	80%	79%	79%	88%	98%	95%	92%	88%	85%	84%	83%	
2022 Expected Daily Use (MG)	105	104	102	120	157	257	298	292	270	158	105	101	164
Actual Daily Use (MG)	1	92	98	102	102	192	182	318					
	2	100	95	101	102	169	186	304					
	3	100	100	101	99	166	223	291					
	4	105	105	100	109	165	229	338					
	5	99	97	95	118	171	237	308					
	6	101	103	100	108	214	263	321					
	7	100	100	102	107	222	250	294					
	8	101	100	101	108	217	286	347					
	9	101	102	103	112	236	262	337					
D	10	99	98	88	103	241	298	320					
A	11	100	97	100	115	275	276	348					
Y	12	98	96	105	102	253	275	326					
	13	101	99	98	103	285	323	363					
O	14	93	105	102	112	268	281	333					
F	15	96	108	99	116	269	319	355					
	16	96	105	97	116	297	301	317					
M	17	103	106	96	118	273	327	326					
O	18	96	106	97	137	297	295	373					
N	19	100	98	96	140	257	290	326					
T	20	100	99	97	148	194	338	328					
H	21	102	102	96	152	156	297	307					
	22	95	100	94	160	153	325	360					
	23	102	102	102	151	167	308	316					
	24	102	102	98	159	167	323	262					
	25	95	99	93	160	198	265	299					
	26	101	103	101	178	228	269	293					
	27	94	104	97	194	262	336	277					
	28	103	103	102	192	239	316	235					
	29	96		96	194	224	342	279					
	30	102		92	204	245	272	286					
	31	91		101		208		294					
Monthly Average	99	101	98	134	223	283	315						180
% of 2022 Expected Daily Use	94%	97%	97%	112%	142%	110%	106%						110%

Notes: 1) "AF" denotes acre-feet. "MG" denotes million gallons. 2) Expected Daily Use is based on historical use with normal weather conditions. 3) The predicted end-of-month supply reservoir contents figures assume normal weather after August 1<sup>st</sup>, 2022. 4) The differences between predicted and actual end-of-month supply reservoir contents are the result of normal estimation error of daily use, supply, evaporation, carriage losses and raw water deliveries. 5) Predicted supply reservoir contents last updated on August 1<sup>st</sup>, 2022. 6) Daily water figures are subject to change.

# Lake Powell Report\*

## Lake Powell Elevation (2001-Current)



\* Denver Water gets half of its water supply from the Colorado River and closely monitors conditions at Lake Powell and within the greater Colorado River Basin.