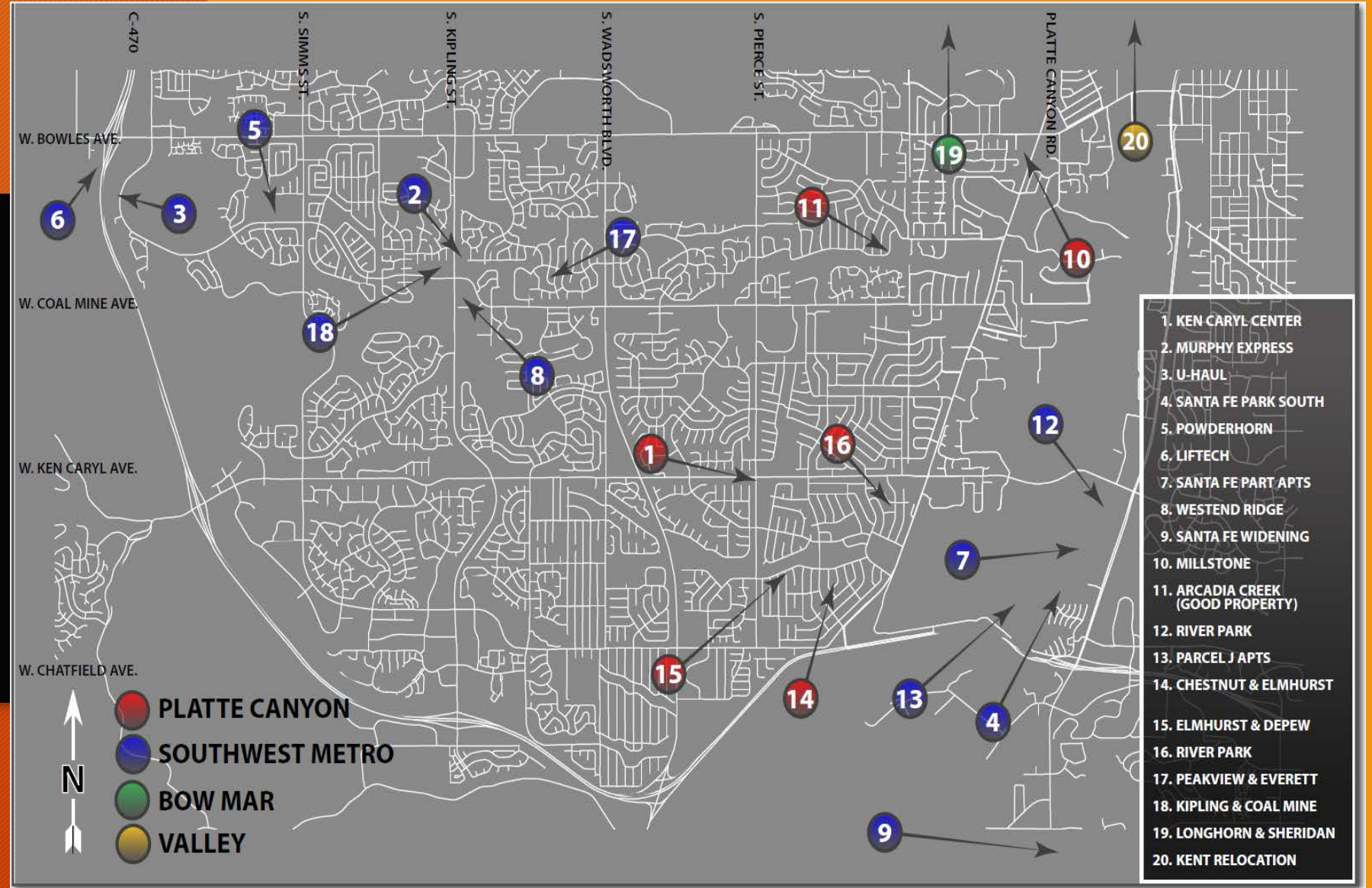


**PLAN REVIEW
AND
CONSTRUCTION
STATUS REPORT
March - 2022**

SUMMARY of projects in
design or under construction



Overall Project Map



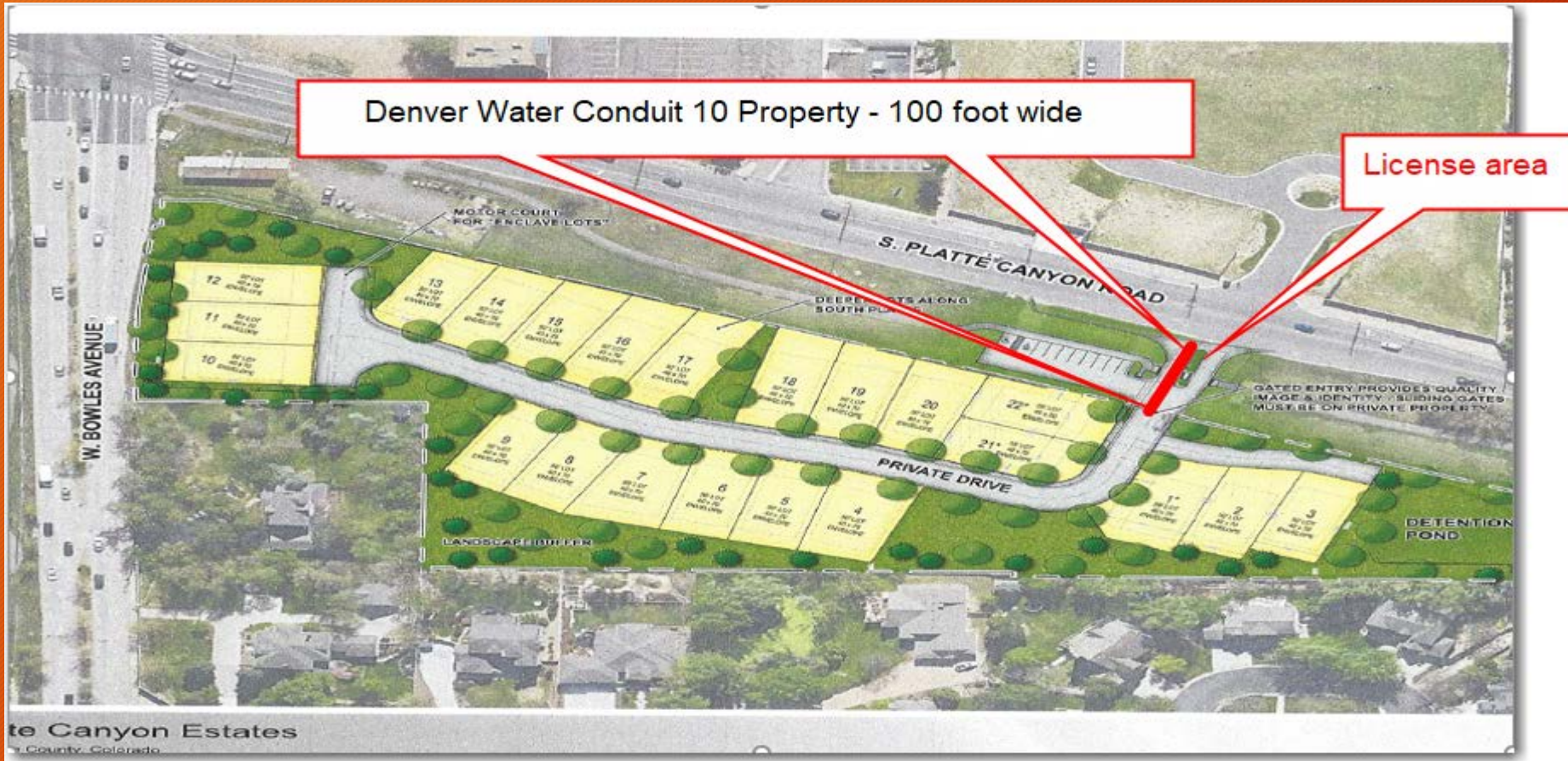
NEW DEVELOPMENT PROJECTS IN DESIGN/PLAN REVIEW:

Below are developer originated, developer funded, projects in various stages of plan review by District Staff, District Engineer and Denver Water

- 1. Murphy Express - Kipling and Coal Mine – Gas Station*
- 2. Ken Caryl Center Fil 2 - Ken Caryl & Pierce – Commercial Development*
- 3. Powderhorn Elementary - Simms and Coal Mine – School Expansion*
- 4. Santa Fe Park Apartments - Mineral & Santa Fe - Multi Family Development*
- 5. River Park - Mineral and Santa Fe – Multi-family and Commercial*
- 6. Parcel J Apartments - Mineral & Santa Fe – Multi Family*
- 7. Santa Fe Park South - Mineral & Santa Fe – Anticipated Revenue - \$3,000,000*
- 8. Millstone at Columbine - Bowles and Platte Canyon – Anticipated Revenue - \$93,000*
- 9. Liftech - C-470 and Bowles (warehouse)*
- 10. Westend Ridge - Coal Mine and Independence – Multi-family - Anticipate Revenue - \$901,000*
- 11. U-Haul - Coal Mine and Bowles (Storage Facility)*
- 12. Blakeland & Santa Fe Dr CDOT (Storage Building)*
- 13. Whistling Hare Distillery – Bowles and C-470*

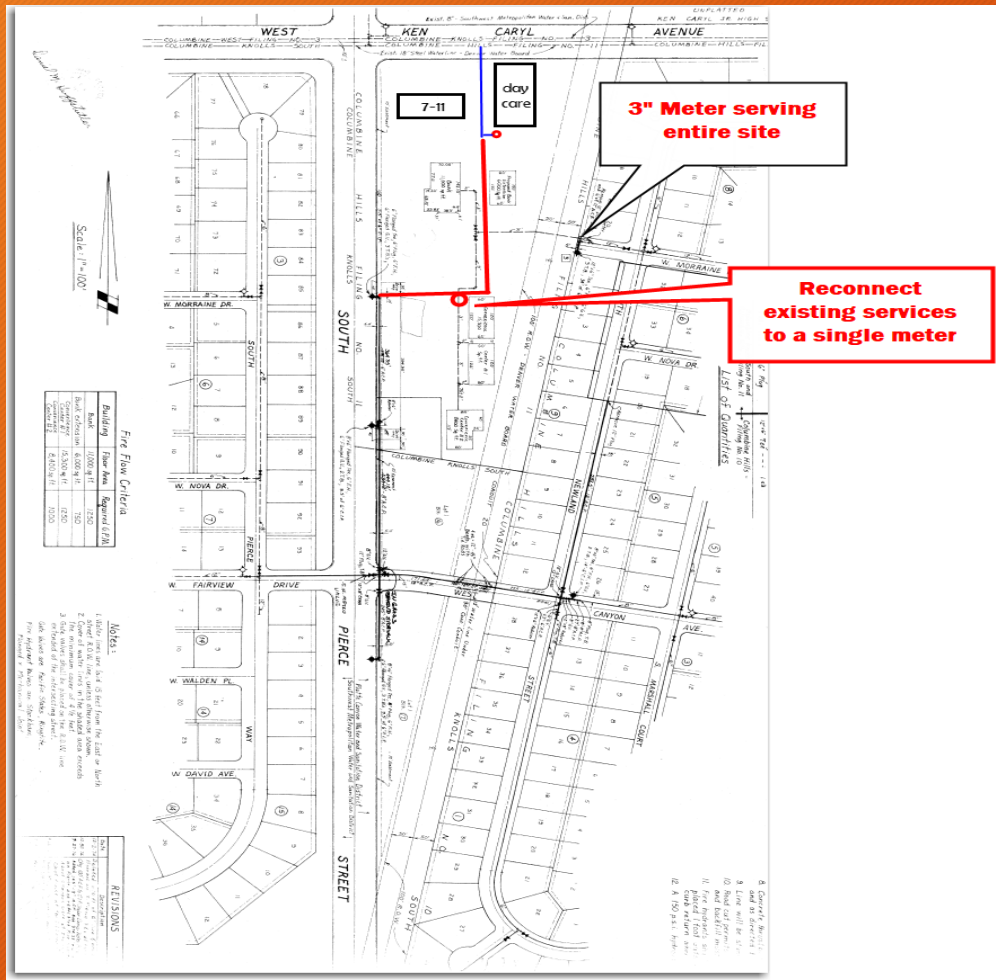
The following slides highlight the some of the active projects:

- PROJECT NAME: Millstone at Columbine
- LOCATION: S. Platte Canyon Rd and W. Bowles Ave
- STATUS: Owner is selling the property to Epic Homes (Epic is building homes in Wild Plum)
- SCOPE: 22 Single Family Homes
- License Agreement Complete
- ANTICIPATED TAP REVENUE PC: sewer - \$29,502 water - \$63,800

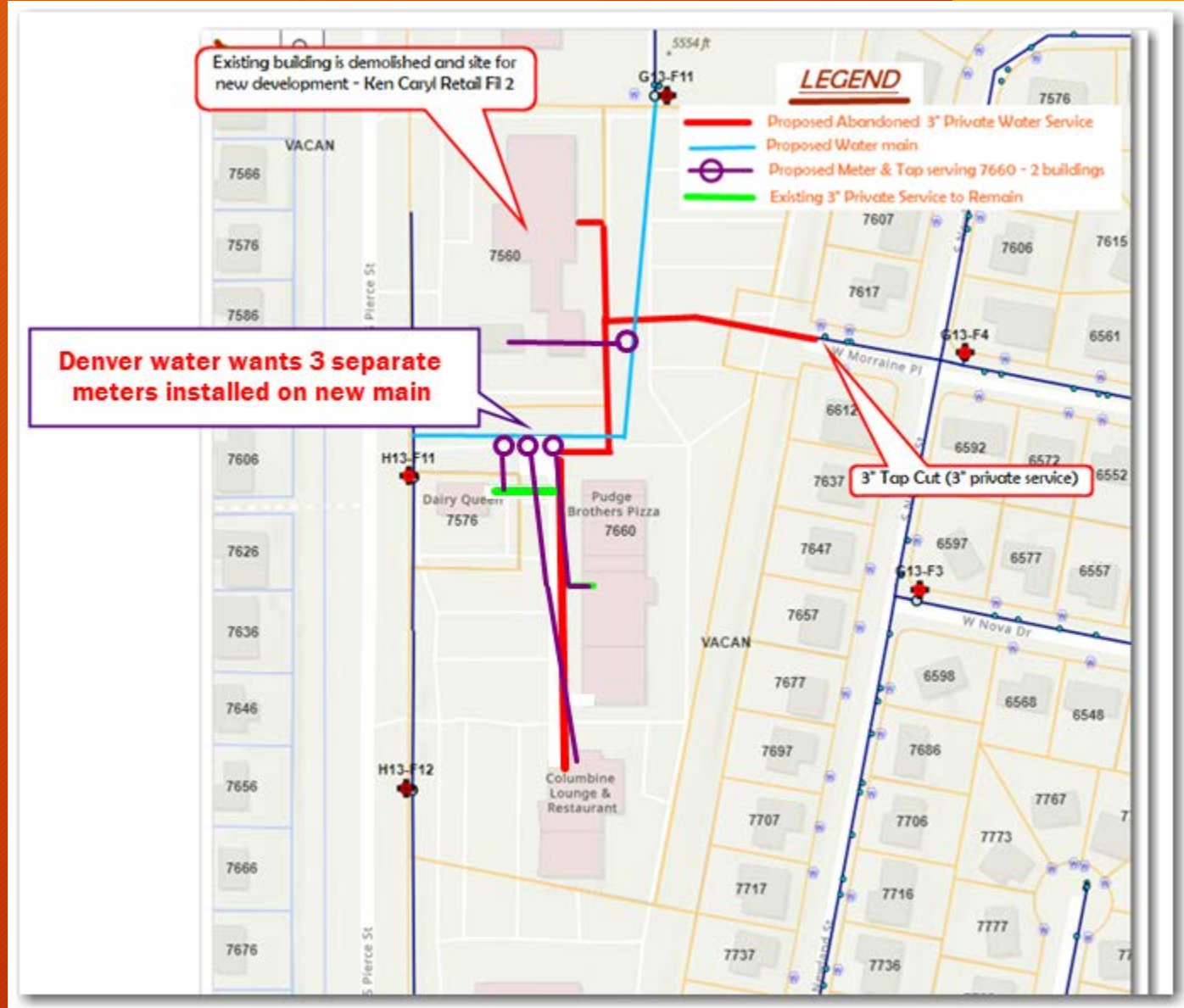


Preliminary Lot Layout

- PROJECT NAME: Ken Caryl Center
- LOCATION: Southeast corner of S. Pierce St and W. Ken Caryl Ave
- STATUS: In Design
- Water- In Review with Staff, RG and Denver Water
- Sewer - In Review with Staff and RG
- SCOPE: Commercial Development

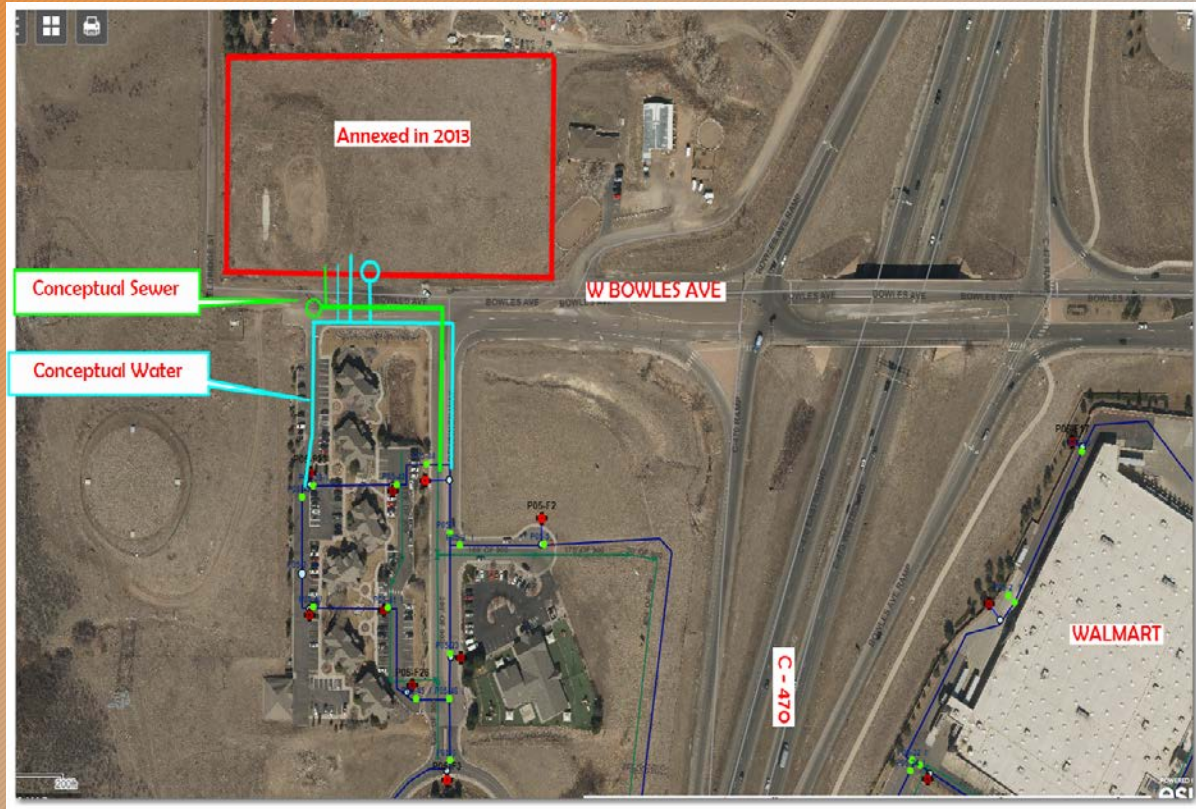


Preliminary Water Plan

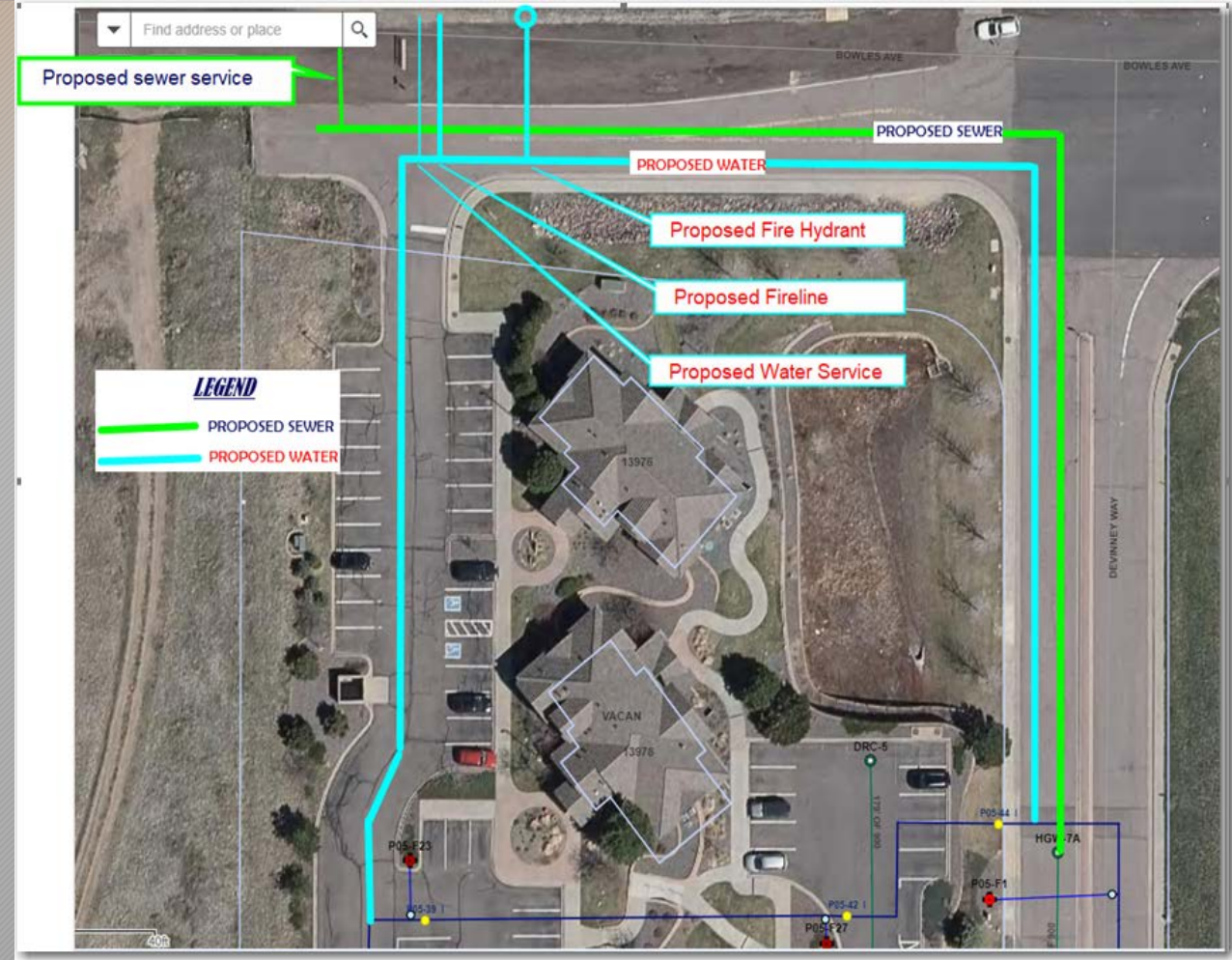


Reconfigured Water Service taps

- PROJECT NAME: Whistling Hare Distillery
- LOCATION: C-470 and W Bowles
- STATUS: Conceptual Design
- SCOPE: 782' of Water and 560' of Sewer

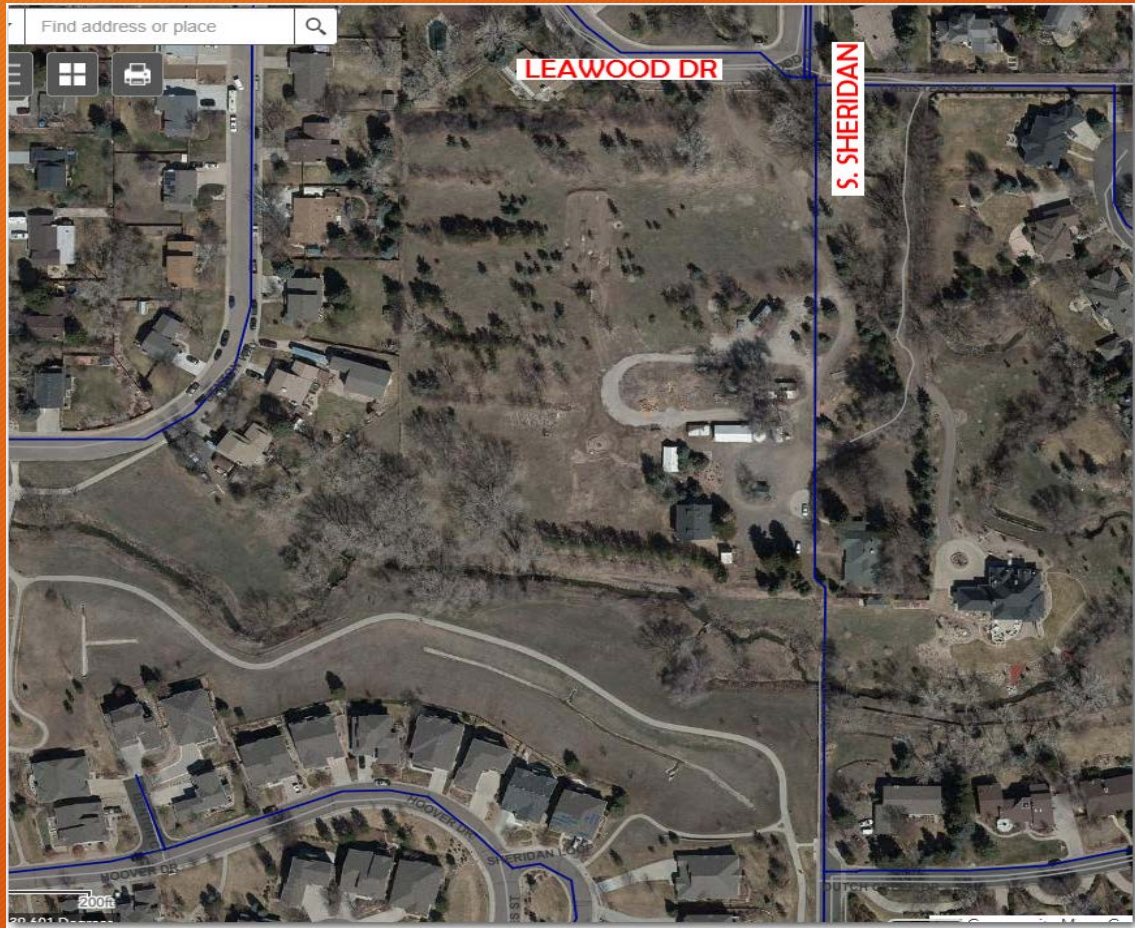


PROJECT LOCATION



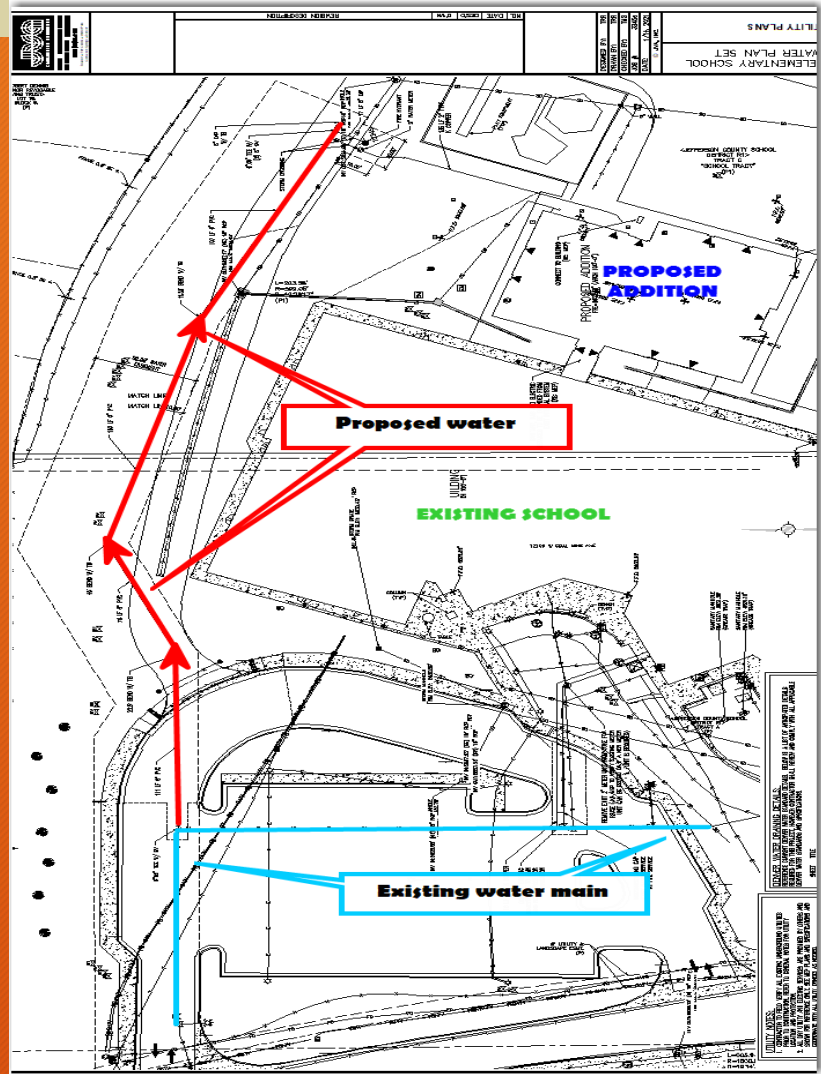
Planned Sewer and Water Extension

- PROJECT NAME: Arcadia Creek (Good Property)
- LOCATION: W. Leawood Dr and S. Sheridan Blvd
- STATUS: Preliminary Design – East portion of site needs annexation into Platte Canyon
- SCOPE: 25 Single Family homes on 10,000 sq ft lots
- Anticipated Revenue: sewer \$33,000 – water \$72,500

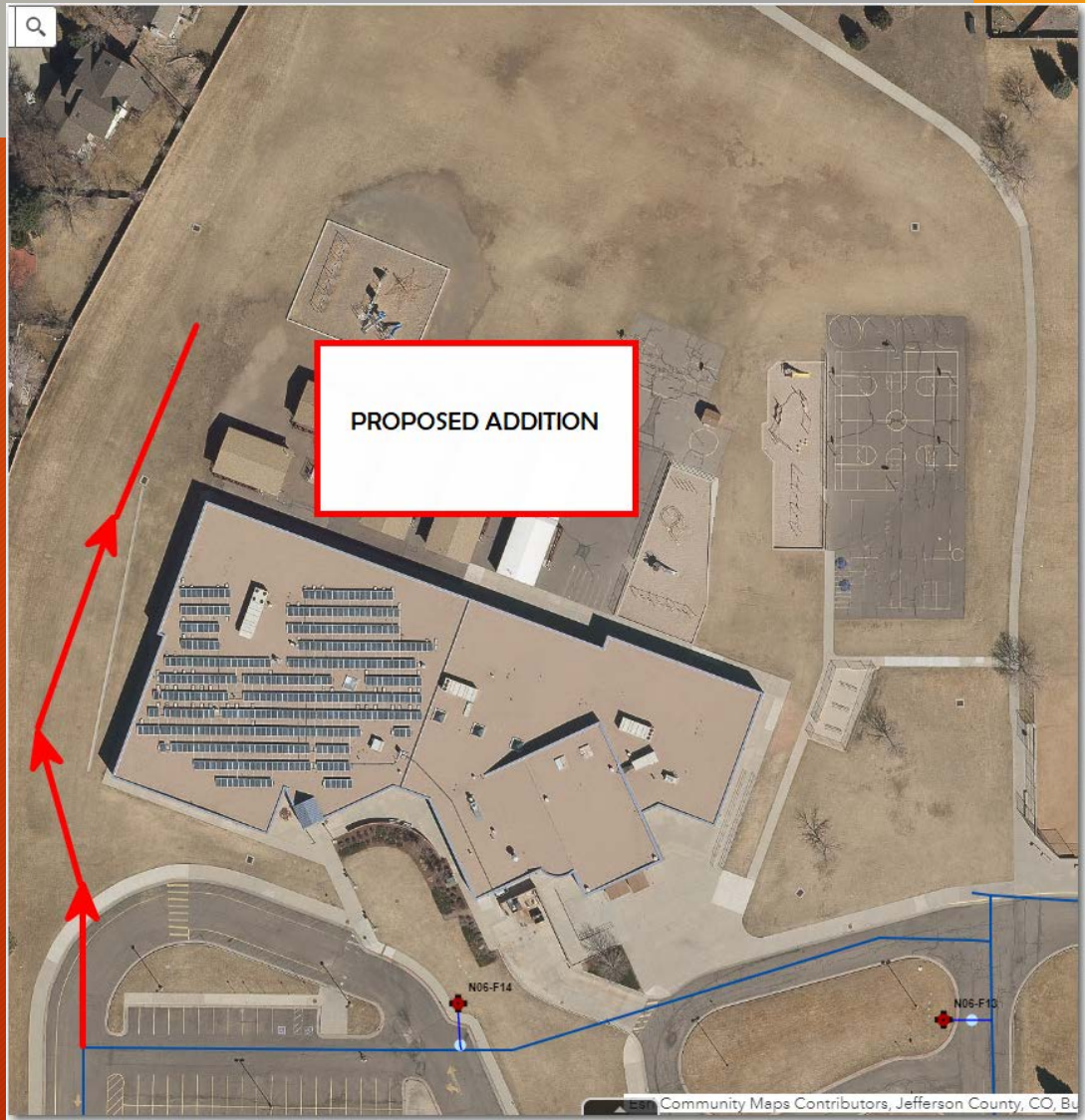


CONCEPTUAL PLAN

- PROJECT NAME: Powderhorn Elementary
- LOCATION: Coal Mine; 1500' West of Simms
- STATUS: In Design
- SCOPE: Water Main Extension with Hydrant for School Expansion



PROJECT PLAN



School Campus Overview

THE FOLLOWING ARE 2022 CAPITAL PROJECTS IN DESIGN

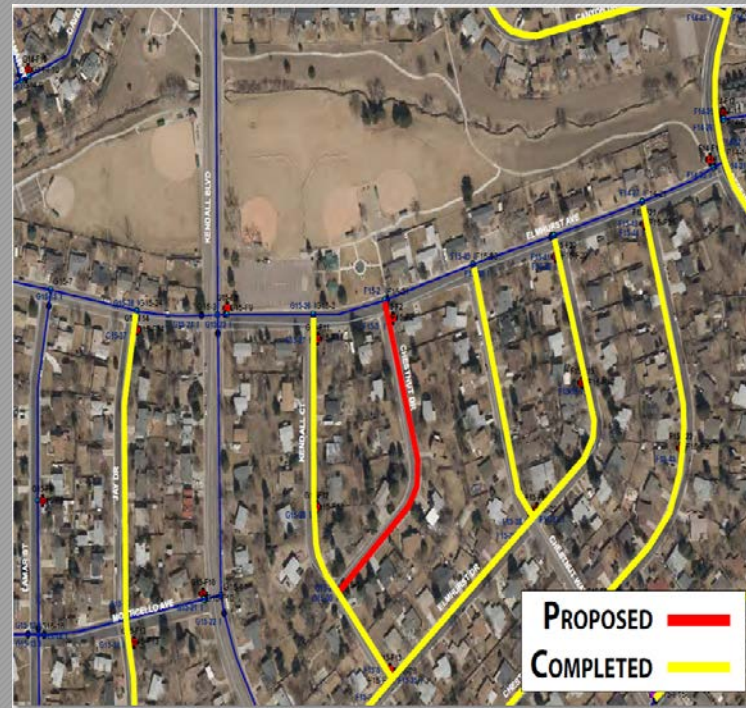
➤ Project Update:

➤ *Platte Canyon Three Water Projects:*

- *Two Bid – Diaz Construction (\$1,037,536.00) & Levi Construction (\$1,296,266.00)*
- *Bid – Diaz Construction low bid (\$1,037,536.00)*
- *Checked references and held interview with contractor*



Elmhurst between Lamar and Depew – 2300' 12" PVC

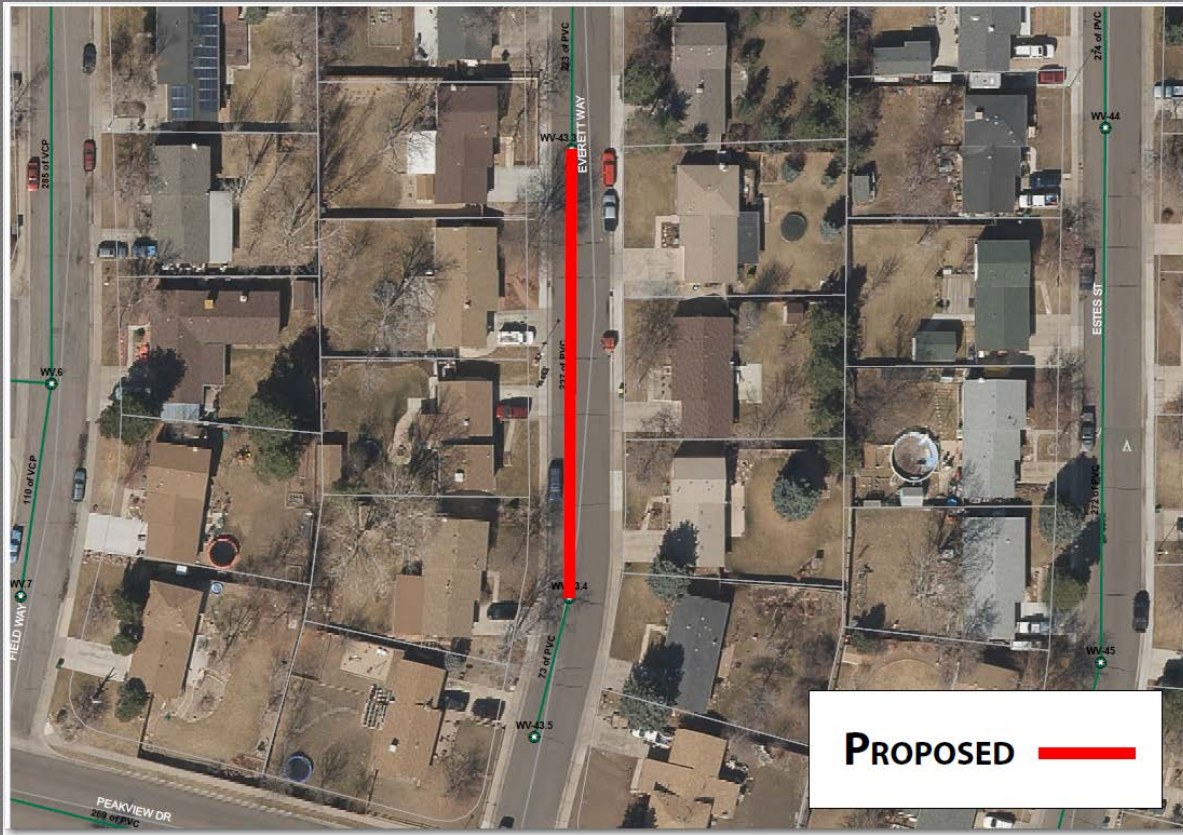


Chestnut and Elmhurst – 821' 6" PVC

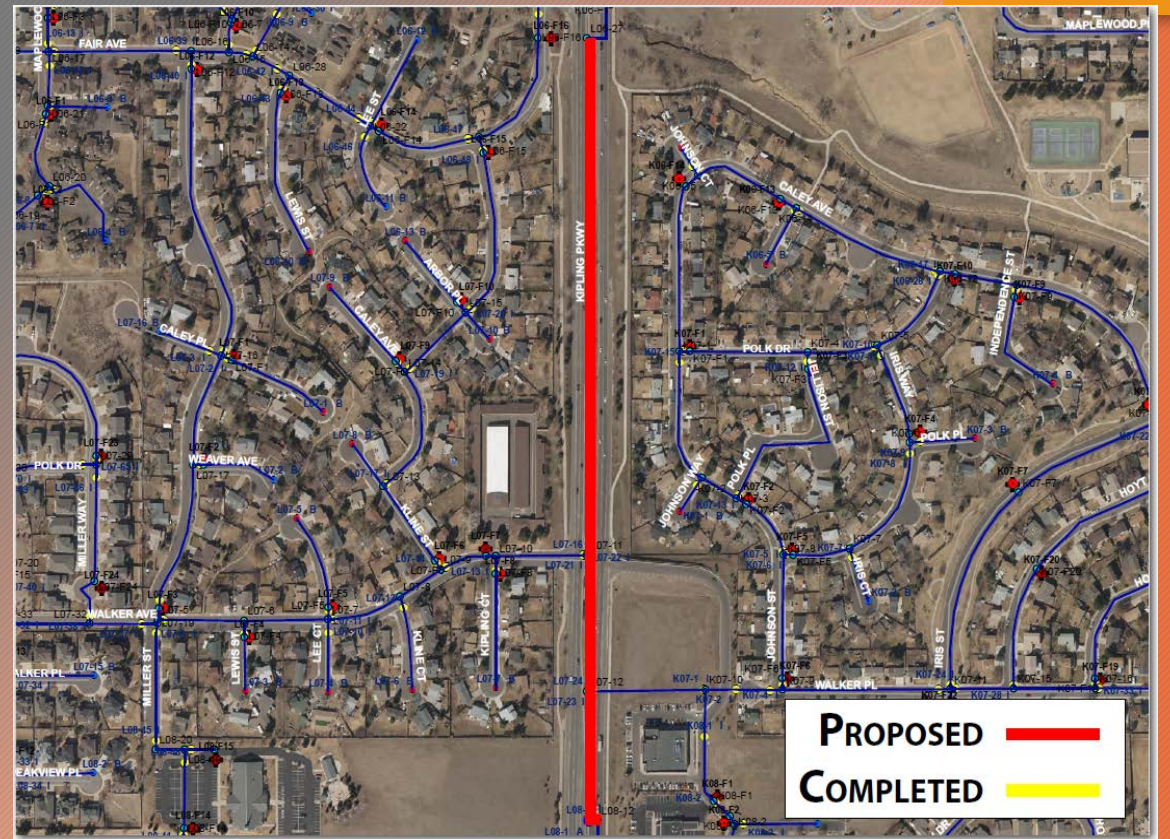


Caryl PI Depew to Ames – 404' 6" PVC

- **SWM – Sewer Project – Everitt Way and Peakview Dr**
- Bid Opening (date changed) – 5/13/2022
- Design Complete
- **SWM – Water Project – S. Kipling St from W. Coal Mine Ave to W. Fair Ave**
- Bid Opening (date changed) – 5/13/2022
- Design Complete



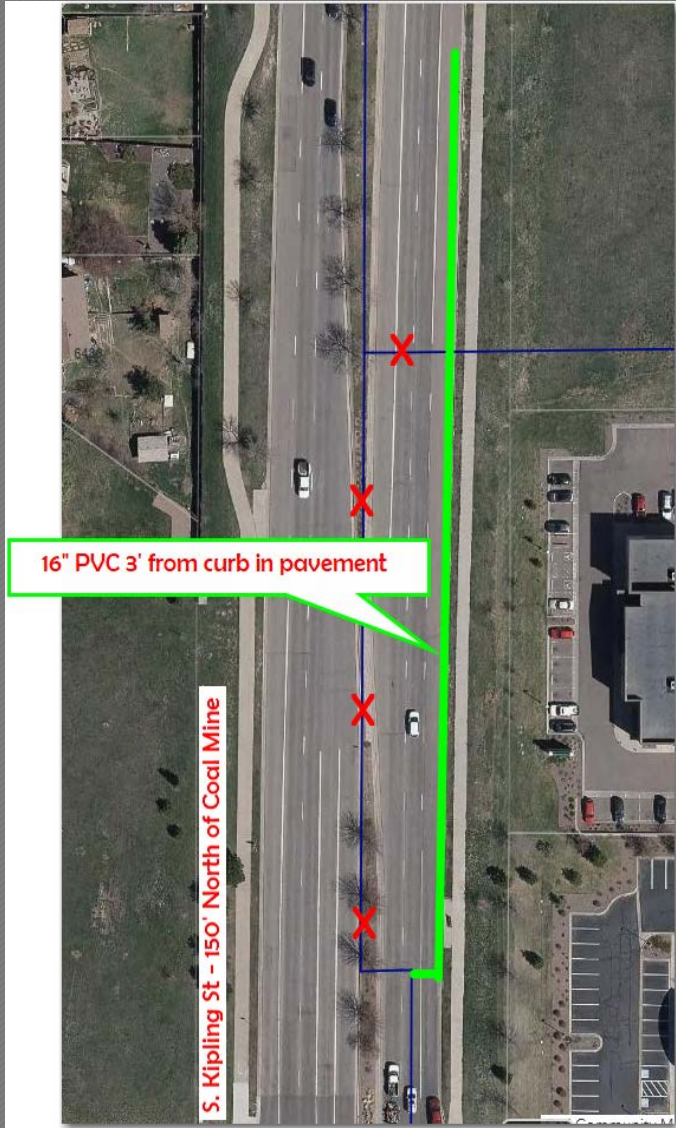
Everitt Way north of Peakview – Replace 227' of 8" Sewer main



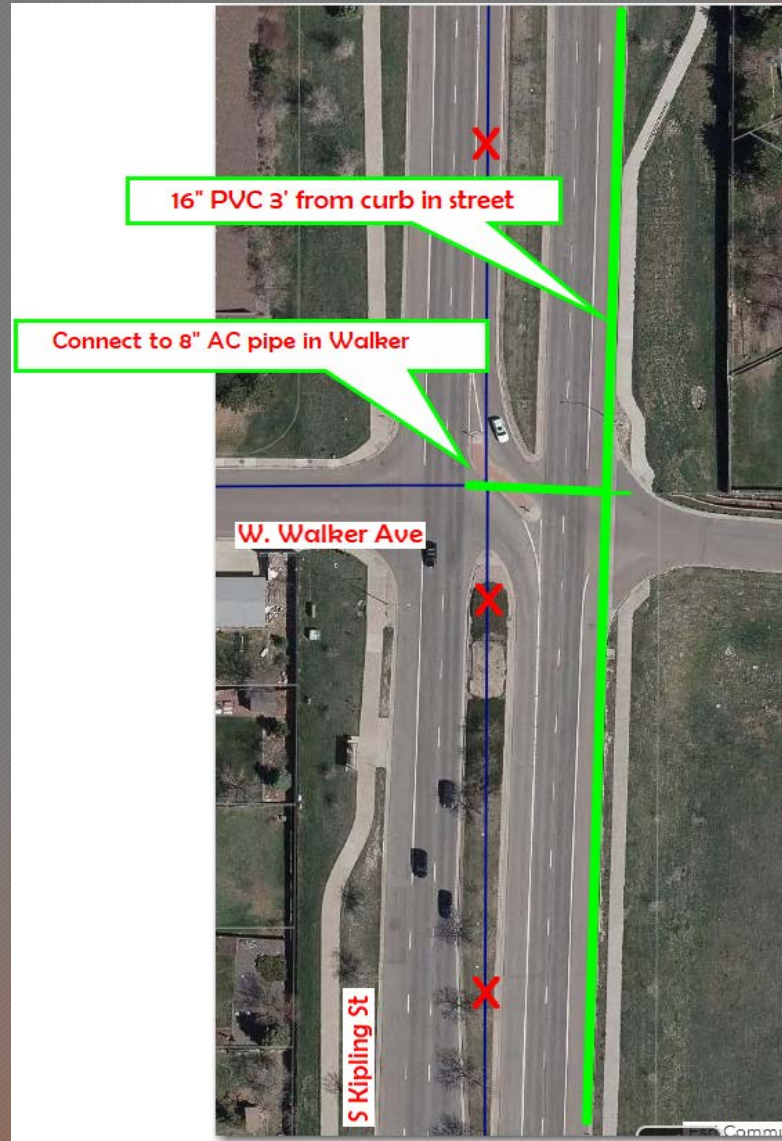
Kipling from Coal Mine to Fair Ave – 2340' of 16" PVC

➤ SWM – 16" Water Layout in S. Kipling St.

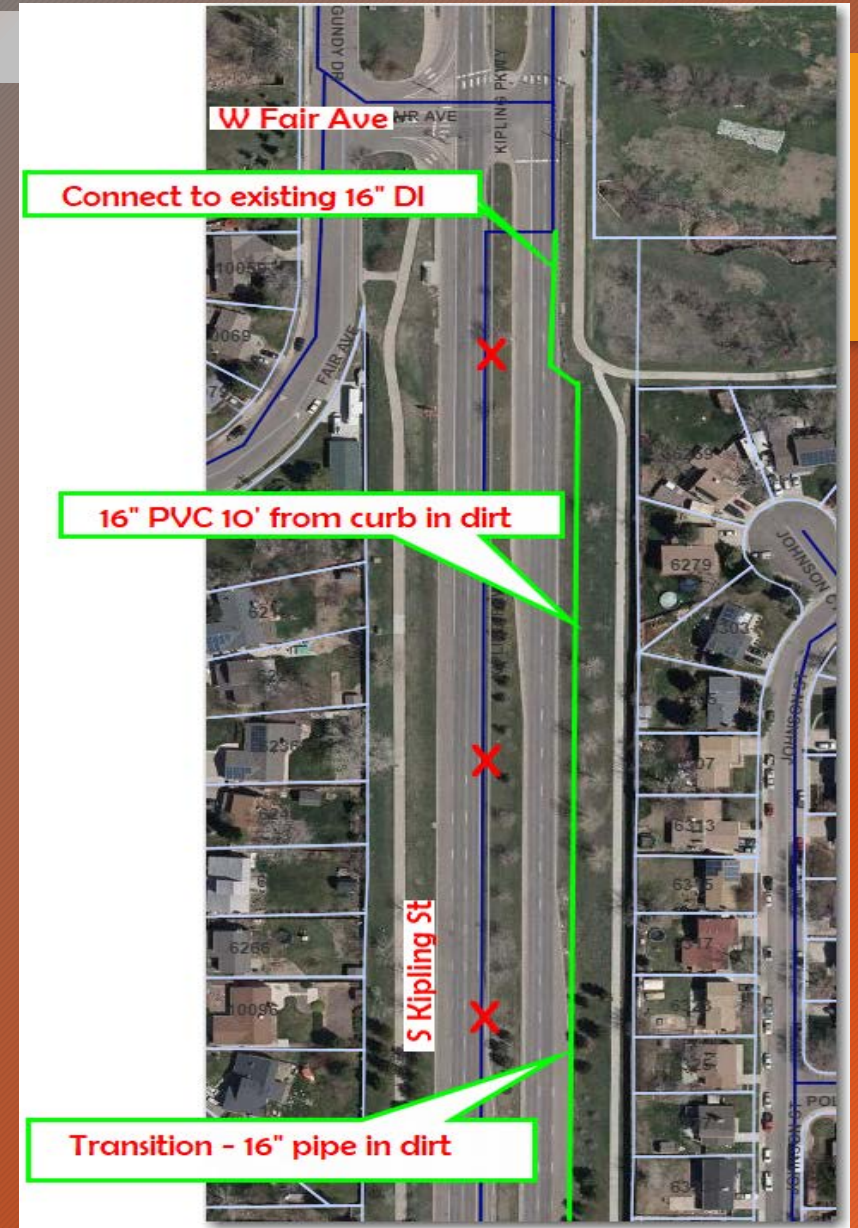
➤ Minimized Traffic Impact – safety and cost



Kipling - Coal Mine to the north



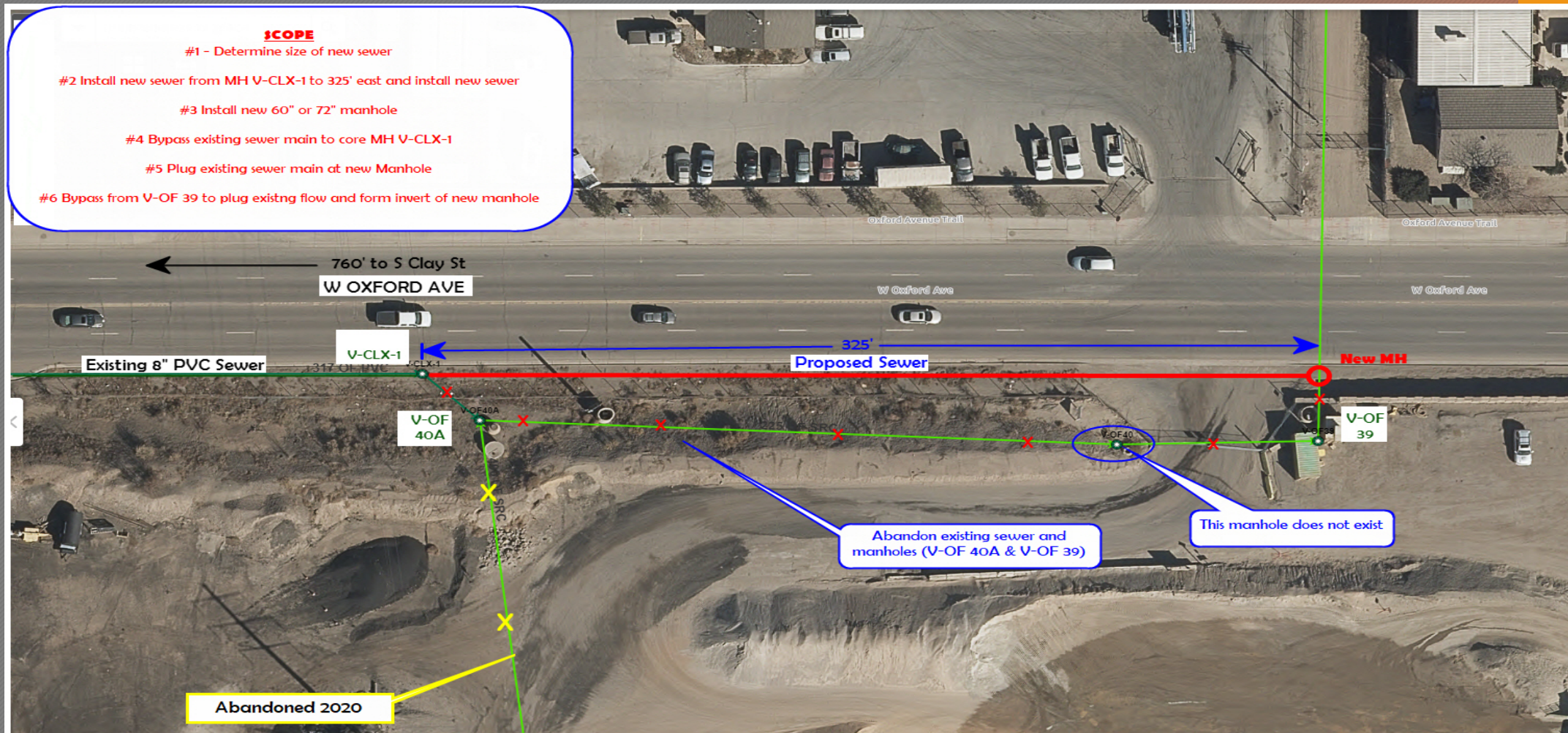
Kipling – Connection at Walker



Kipling – Connection at Fair

➤ Valley – Sewer Replacement – North of Kent Property

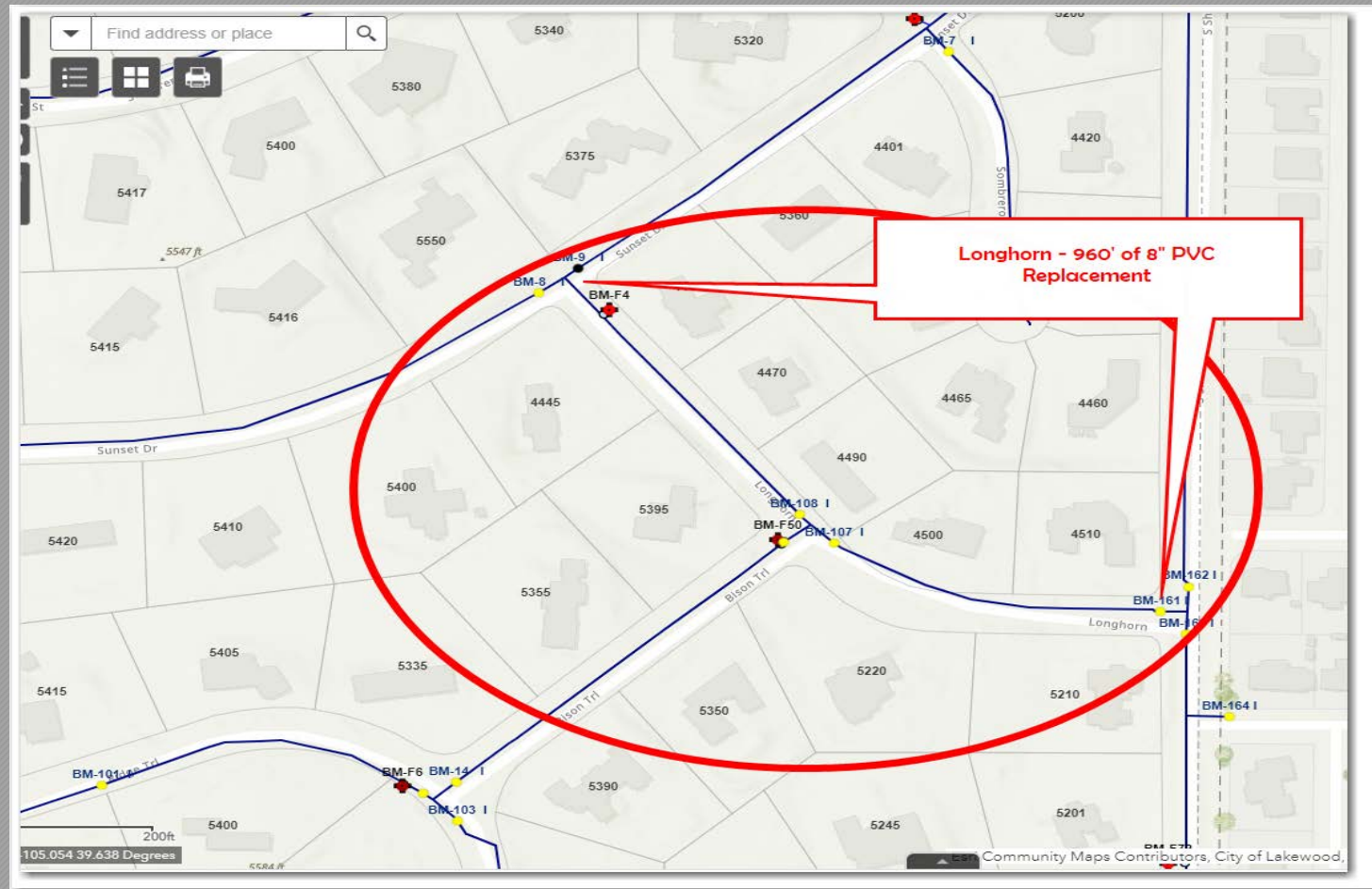
➤ Bid Opening – 4/25/2022



CONCEPTUAL PLAN

➤ Bow Mar – 1 Water Project

- Plan in design – submittal to Denver Water
- Bid Opening 5/20/2022



Longhorn – Sunset to Sheridan

QUESTIONS?