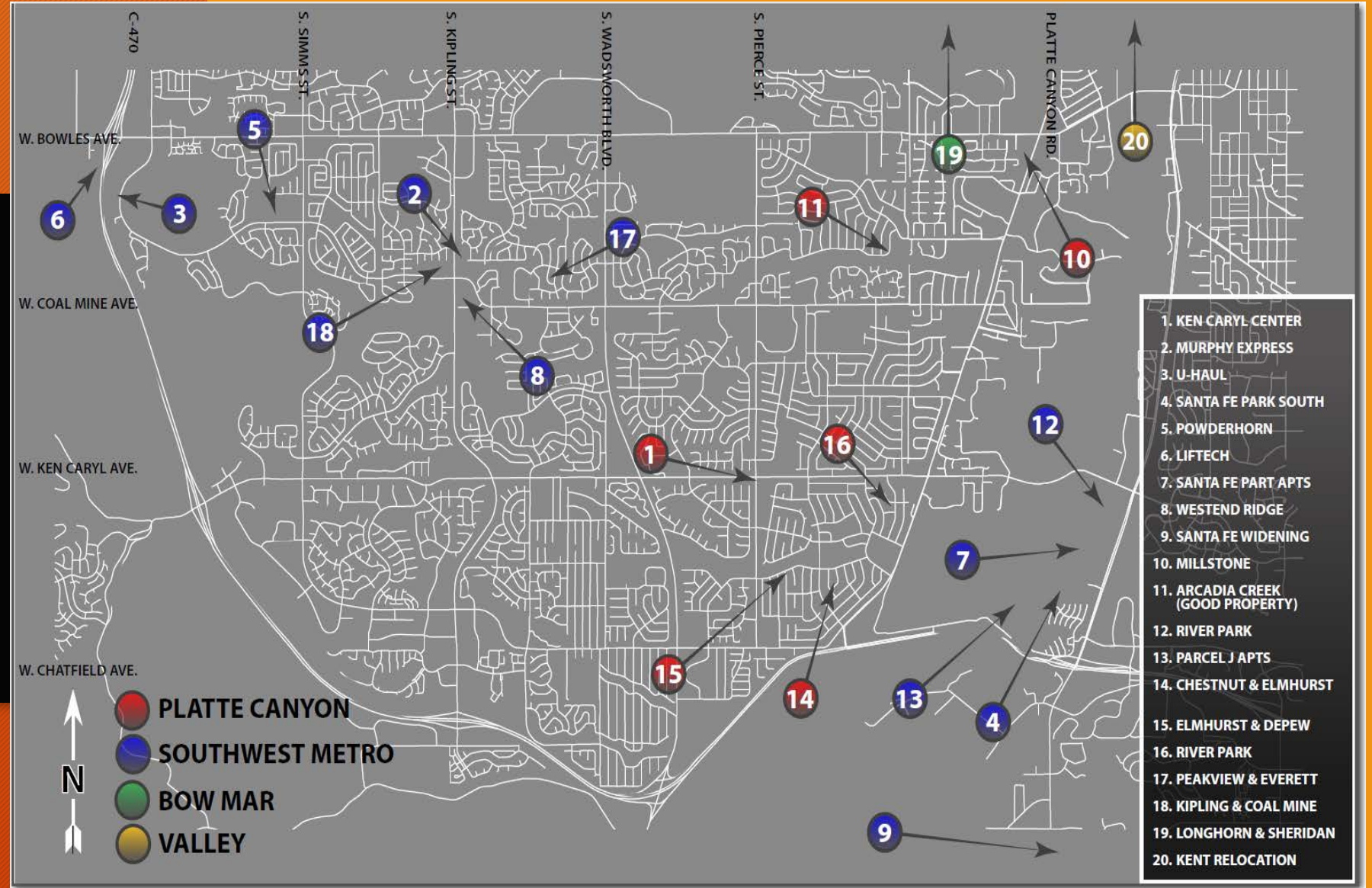


**PLAN REVIEW  
AND  
CONSTRUCTION  
STATUS REPORT  
—FEB - 2022**

SUMMARY of projects in  
design or under construction



# Overall Project Map



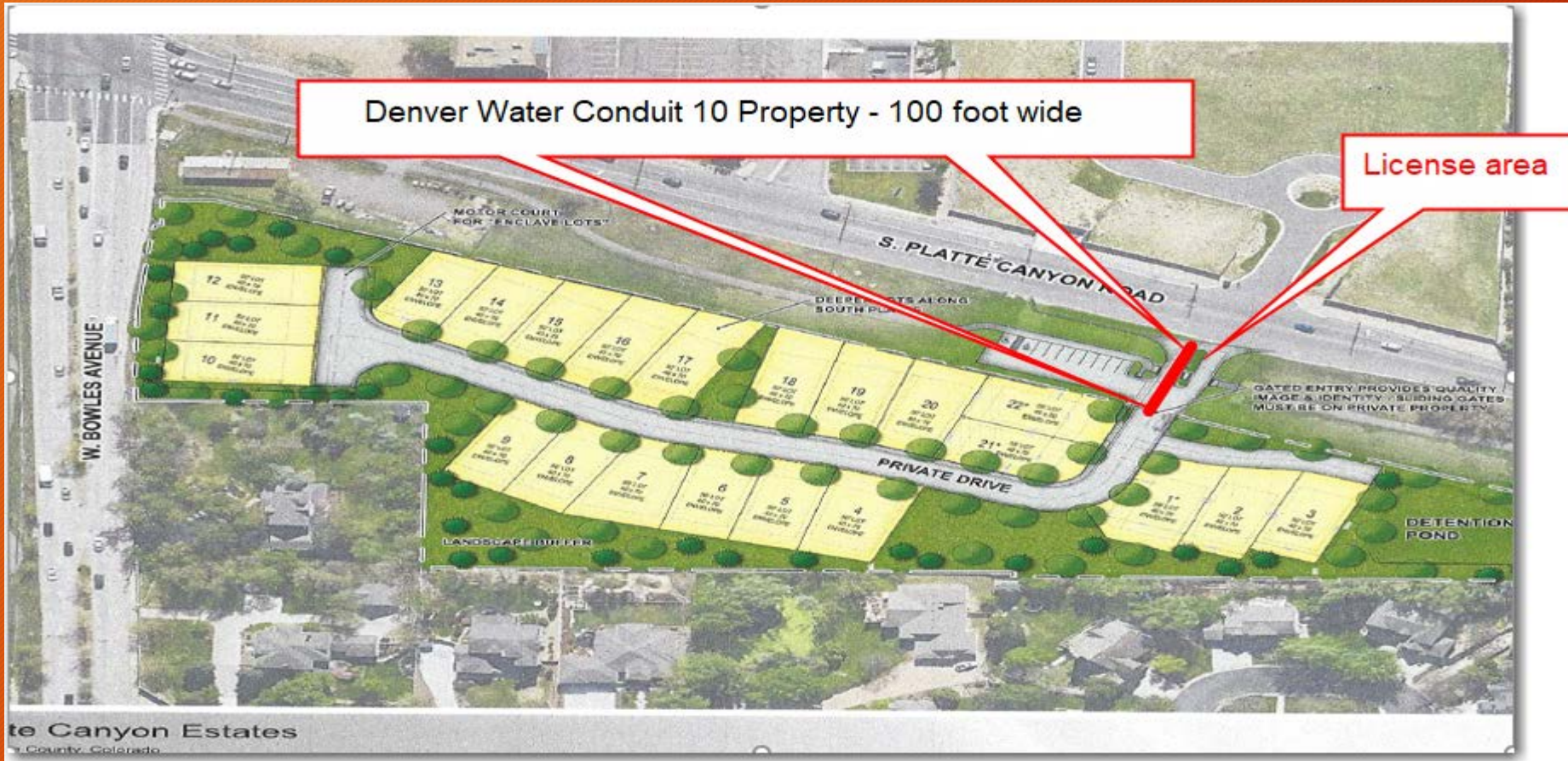
# *NEW DEVELOPMENT PROJECTS IN DESIGN/PLAN REVIEW:*

Below are developer originated, developer funded, projects in various stages of plan review by District Staff, District Engineer and Denver Water

- 1. Murphy Express - Kipling and Coal Mine – Gas Station*
- 2. Ken Caryl Center Fil 2 - Ken Caryl & Pierce – Commercial Development*
- 3. Powderhorn Elementary - Simms and Coal Mine – School Expansion*
- 4. Santa Fe Park Apartments - Mineral & Santa Fe - Multi Family Development*
- 5. River Park - Mineral and Santa Fe – Multi-family and Commercial*
- 6. Parcel J Apartments - Mineral & Santa Fe – Multi Family*
- 7. Santa Fe Park South - Mineral & Santa Fe – Anticipated Revenue - \$3,000,000*
- 8. Millstone at Columbine - Bowles and Platte Canyon – Anticipated Revenue - \$93,000*
- 9. Liftech - C-470 and Bowles (warehouse)*
- 10. Westend Ridge - Coal Mine and Independence – Multi-family - Anticipate Revenue - \$901,000*
- 11. U-Haul - Coal Mine and Bowles (Storage Facility)*
- 12. Blakeland & Santa Fe Dr CDOT (Storage Building)*
- 13. Whistling Hare Distillery – Bowles and C-470*

**The following slides highlight the some of the active projects:**

- PROJECT NAME: Millstone at Columbine
- LOCATION: S. Platte Canyon Rd and W. Bowles Ave
- STATUS: Plans near completion
- SCOPE: 22 Single Family Homes
- License Agreement with DW: With DW for execution
- ANTICIPATED TAP REVENUE PC: sewer - \$29,502 water - \$63,800

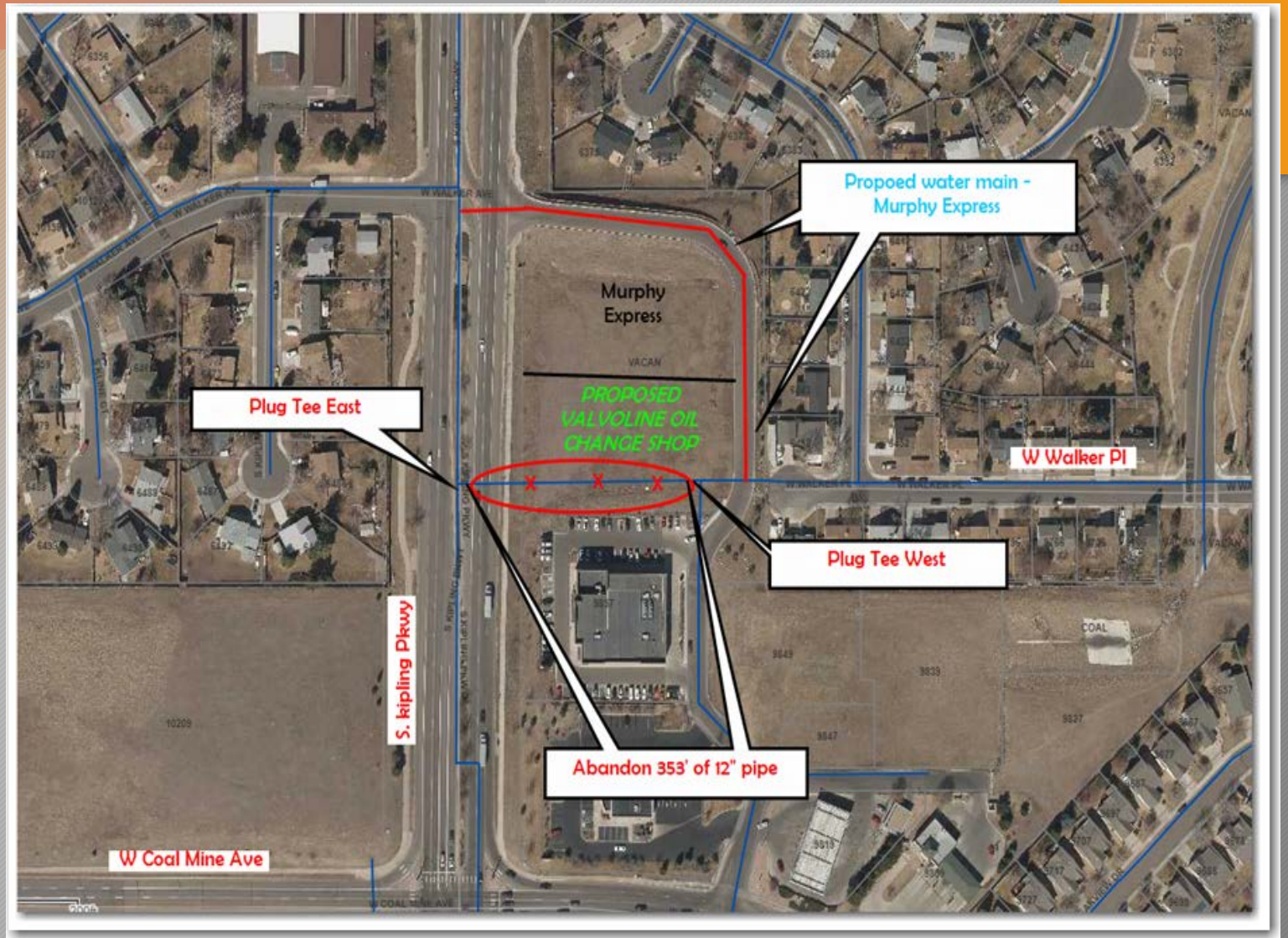


Preliminary Lot Layout

- PROJECT NAME: Murphy Express – Gas Station
- LOCATION: S. Kipling St., 500' South of W. Coal Mine Ave.
- STATUS: In Plan Review at DW – Valvoline asking to abandon south connection
- SCOPE: 732' of 8" PVC Pipe

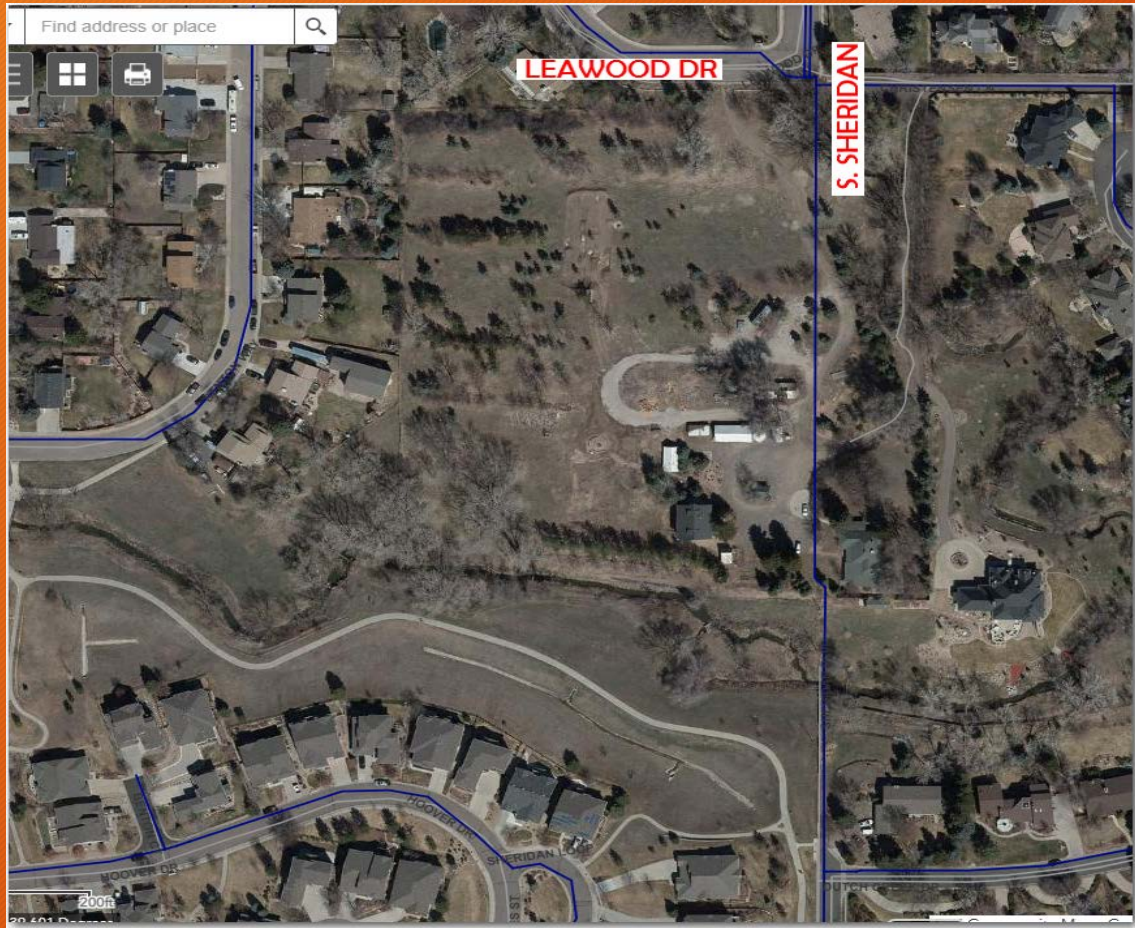


PROJECT LOCATION



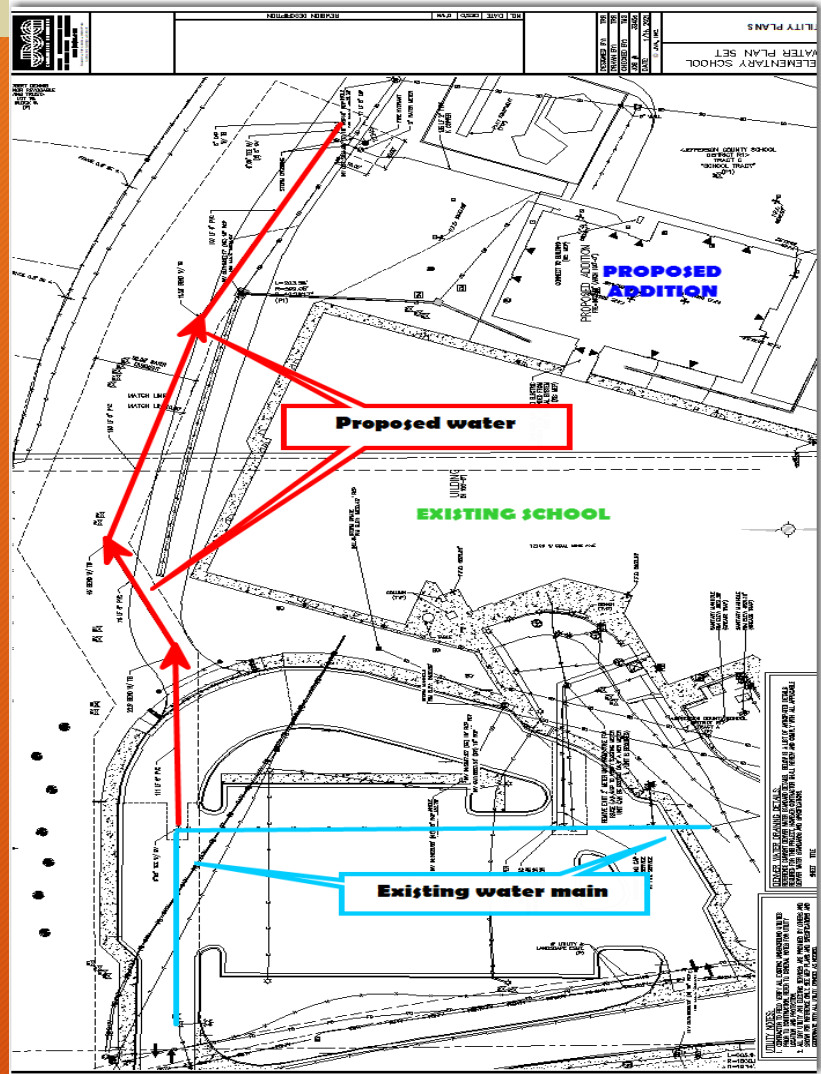
Pipe Abandonment - Adjoining Project

- PROJECT NAME: Arcadia Creek (Good Property)
- LOCATION: W. Leawood Dr and S. Sheridan Blvd
- STATUS: Preliminary Design – East portion of site needs annexation into Platte Canyon
- SCOPE: 25 Single Family homes on 10,000 sq ft lots
- Anticipated Revenue: sewer \$33,000 – water \$72,500

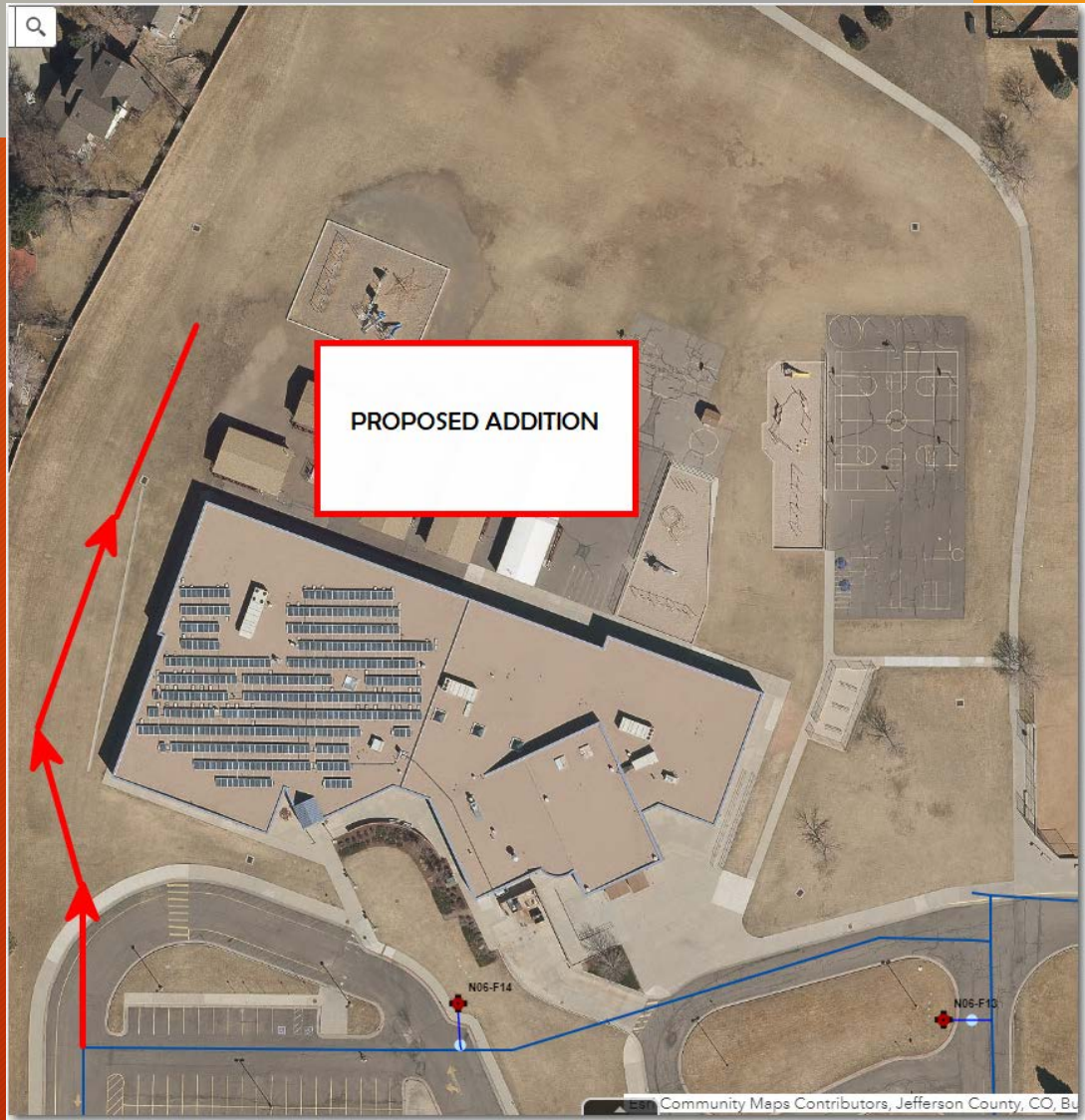


CONCEPTUAL PLAN

- PROJECT NAME: Powderhorn Elementary
- LOCATION: Coal Mine; 1500' West of Simms
- STATUS: Preliminary Design
- SCOPE: Water Main Extension with Hydrant for School Expansion



PROJECT PLAN



School Campus Overview



**THE FOLLOWING ARE 2022 CAPITAL PROJECTS IN DESIGN**



➤ Project Update:

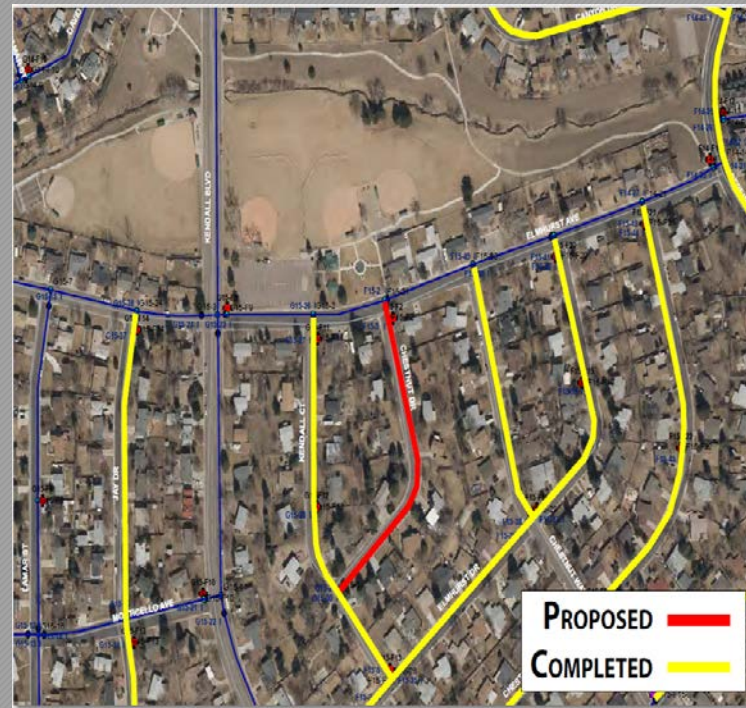
➤ **Platte Canyon Three Water Projects:**

➤ Bid Opening – 3/11/22

➤ 90% design complete – Approval by Denver Water pending



Elmhurst between Lamar and Depew – 2300' 12" PVC



Chestnut and Elmhurst – 821' 6" PVC



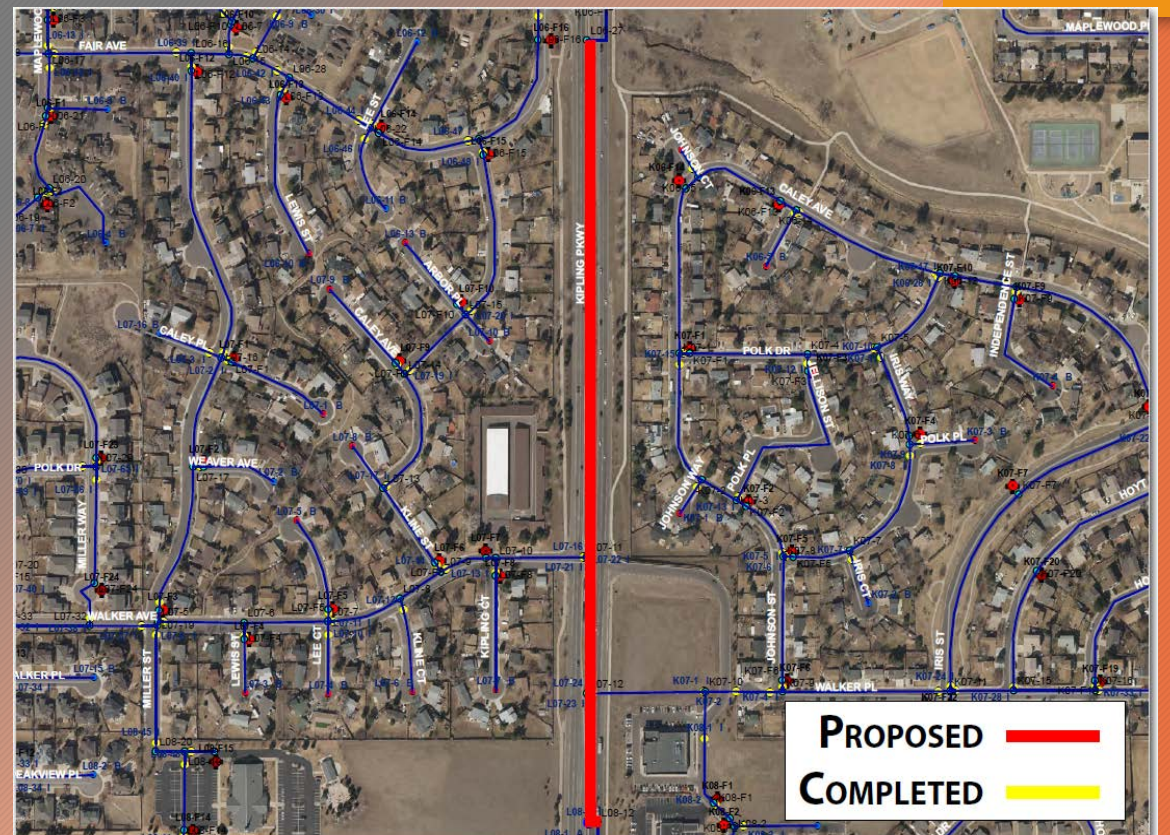
Caryl PI Depew to Ames – 404' 6" PVC

## ➤ SWM – 1 Sewer Project and 1 Water Project

- Bid Opening – 3/11/2022
- 90% design complete – Denver Water Approval Pending



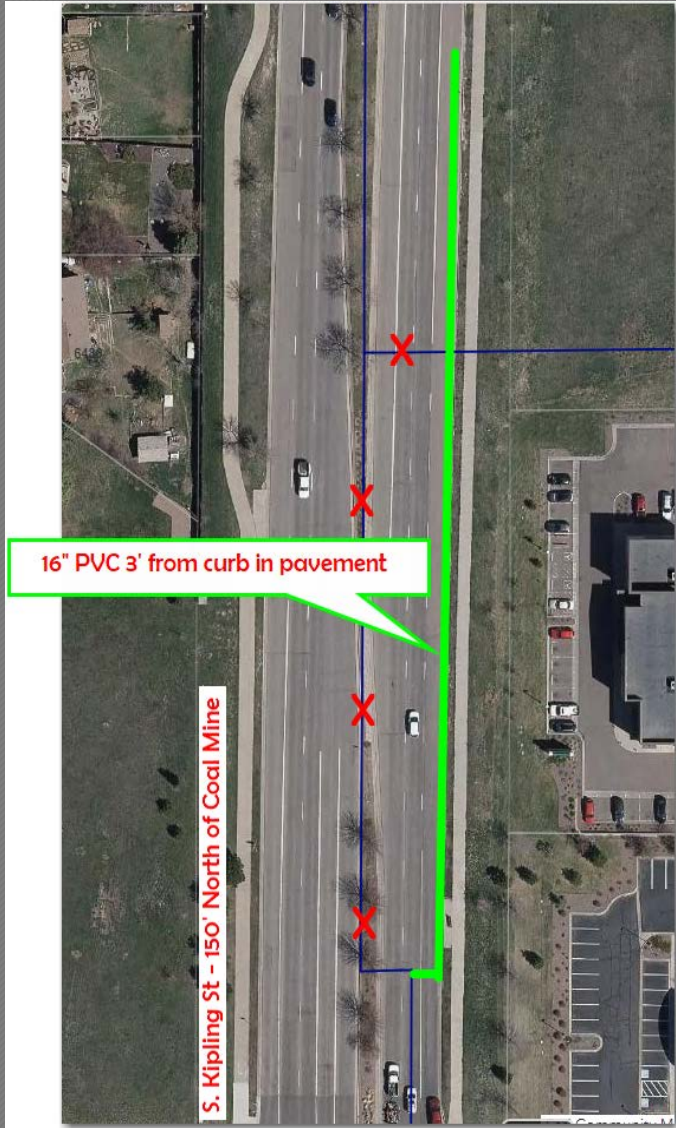
Everitt Way north of Peakview – Replace 227' of 8" Sewer main



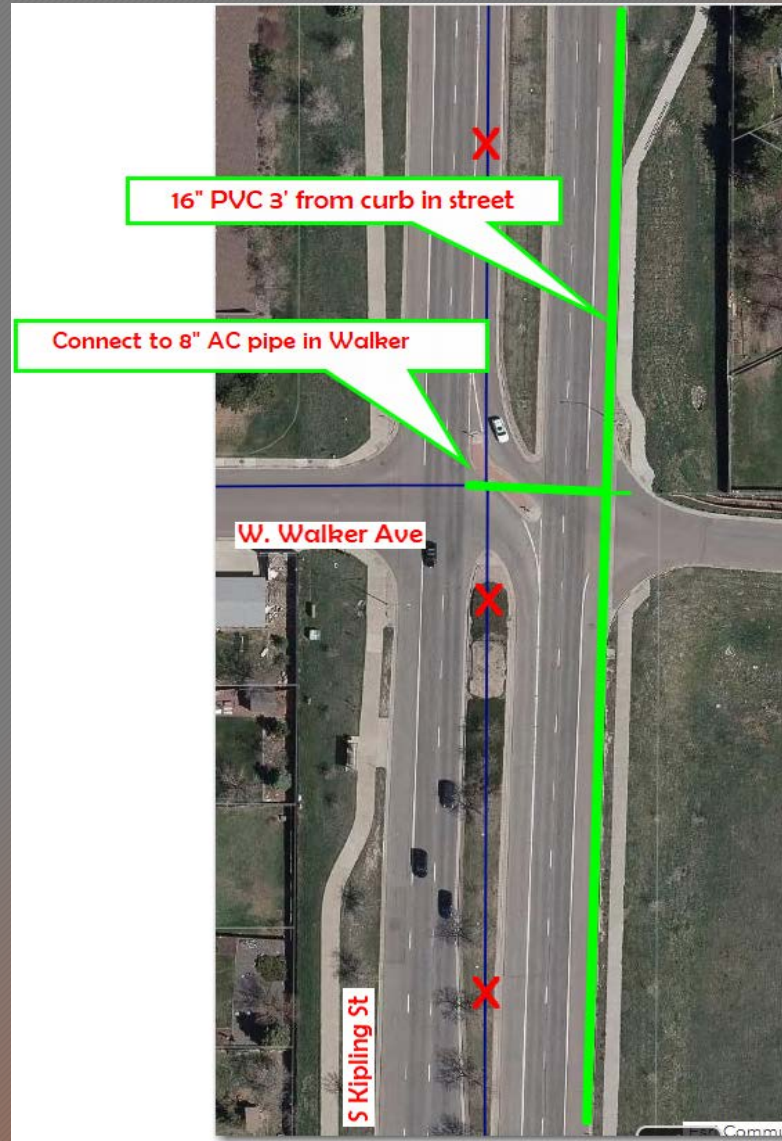
Kipling from Coal Mine to Fair Ave – 2340' of 16" PVC

# ➤ SWM – 16" Water Layout in S. Kipling St.

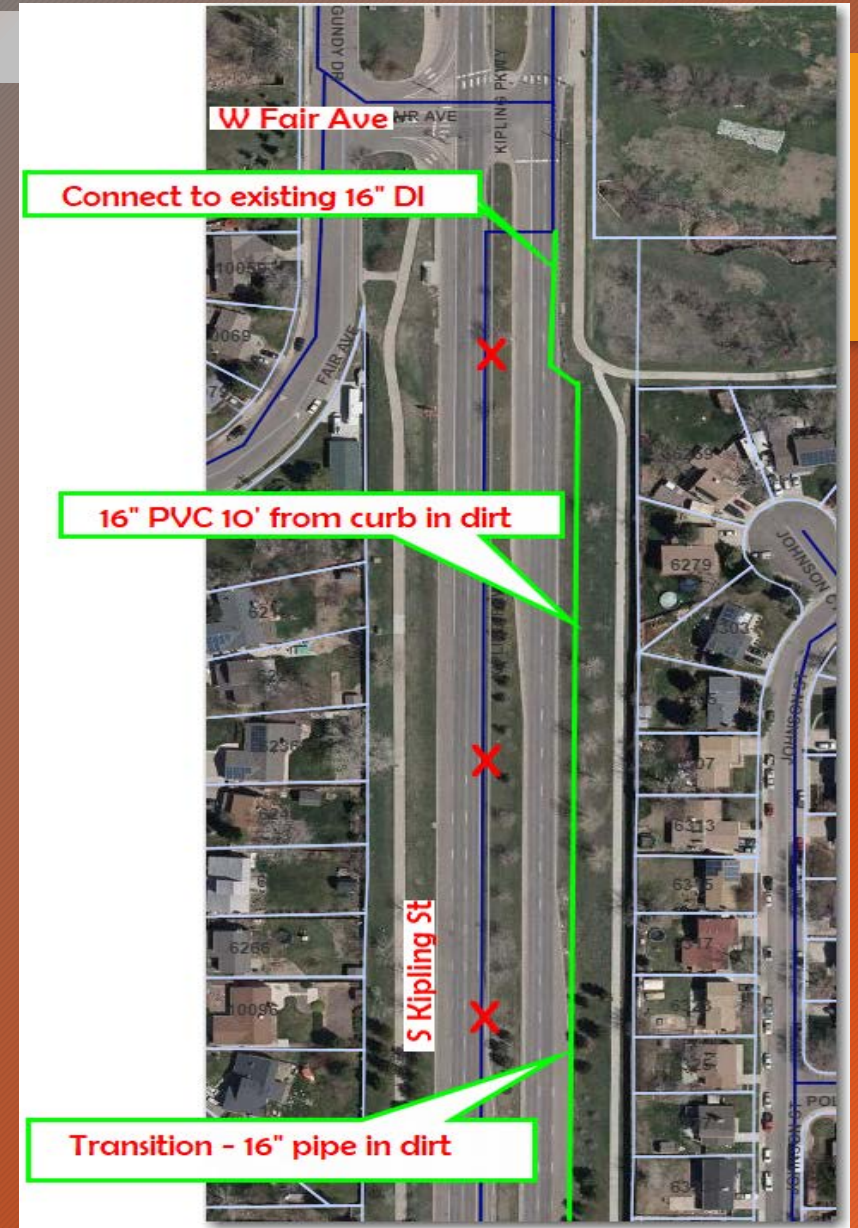
➤ Minimize Traffic Impact – safety and cost



Kipling - Coal Mine to the north



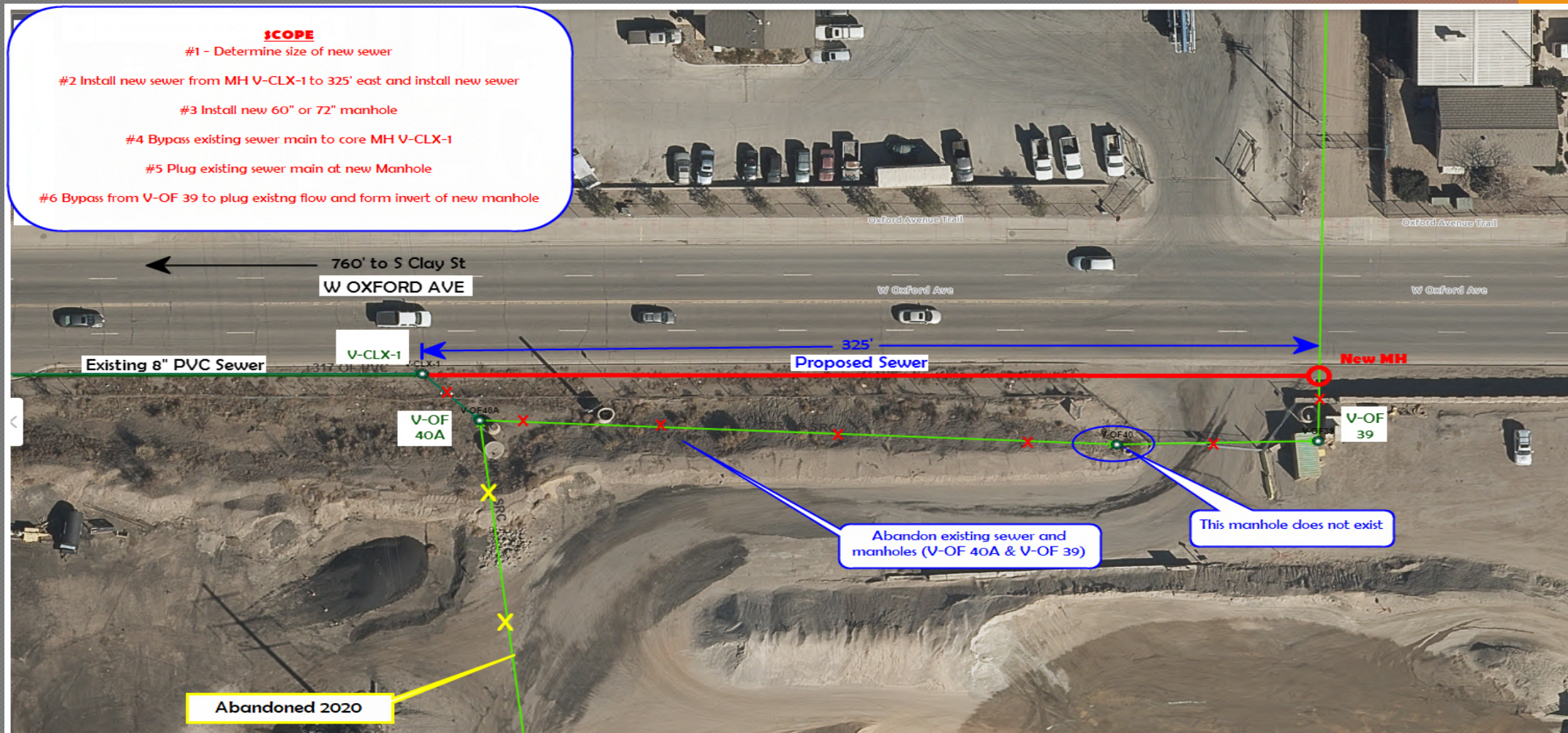
Kipling – Connection at Walker



Kipling – Connection at Fair

# ➤ Valley – Sewer Replacement – North of Kent Property

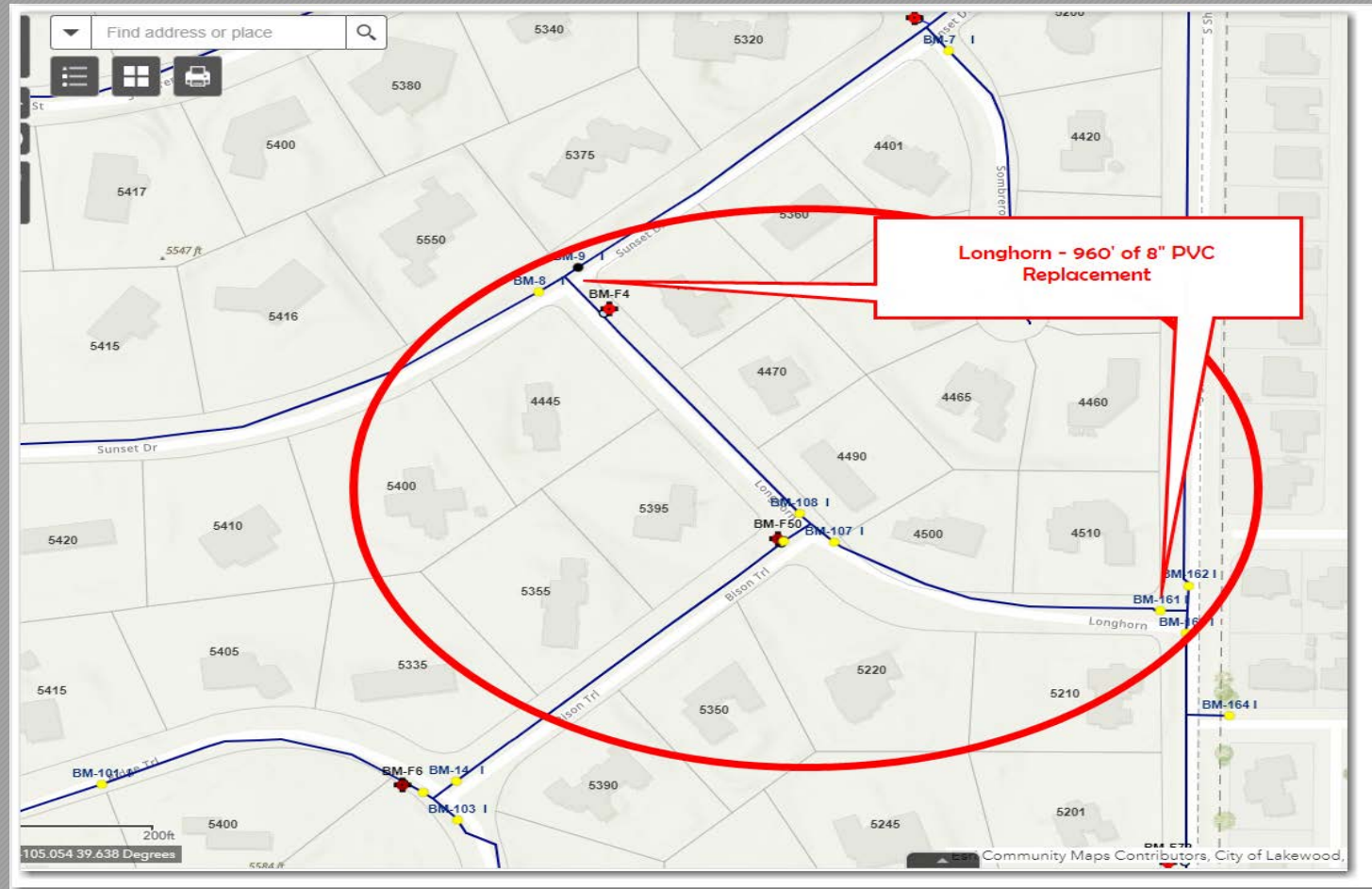
➤ Bid Opening – 3/25/2022



CONCEPTUAL PLAN

## ➤ Bow Mar – 1 Water Project

➤ Bid Opening 5/20/2022



Longhorn – Sunset to Sheridan

QUESTIONS?