



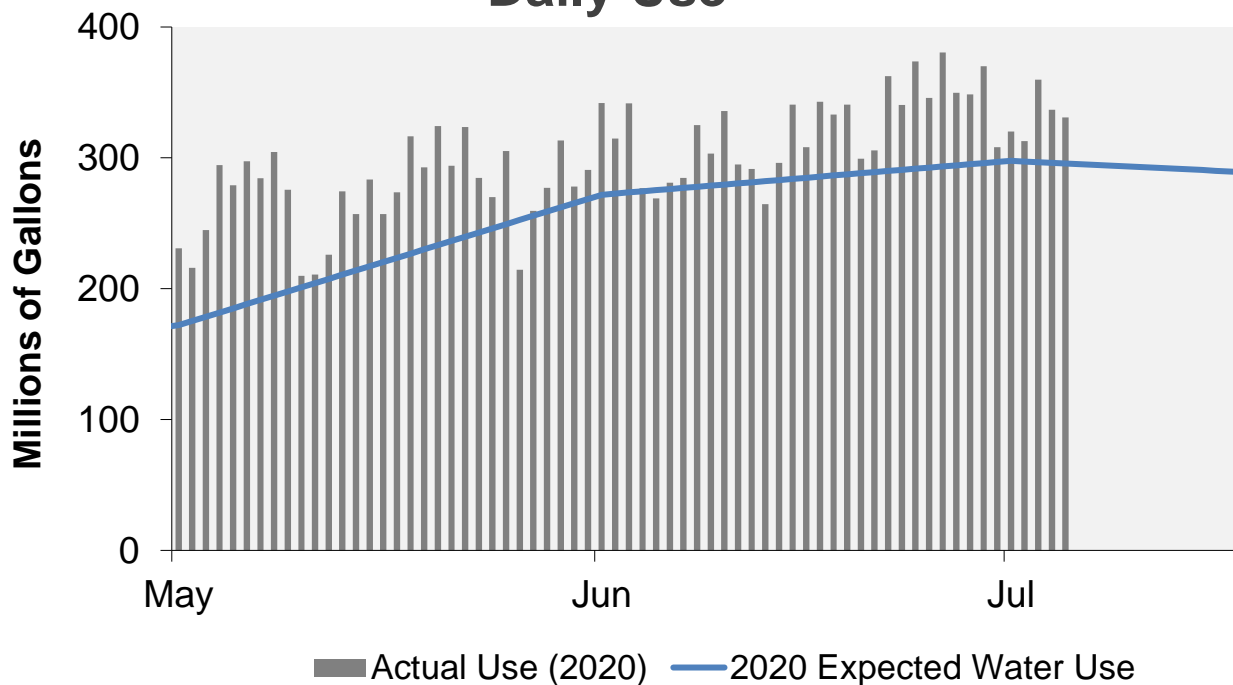
WATER WATCH REPORT

July 20, 2020

Supply Reservoir Contents

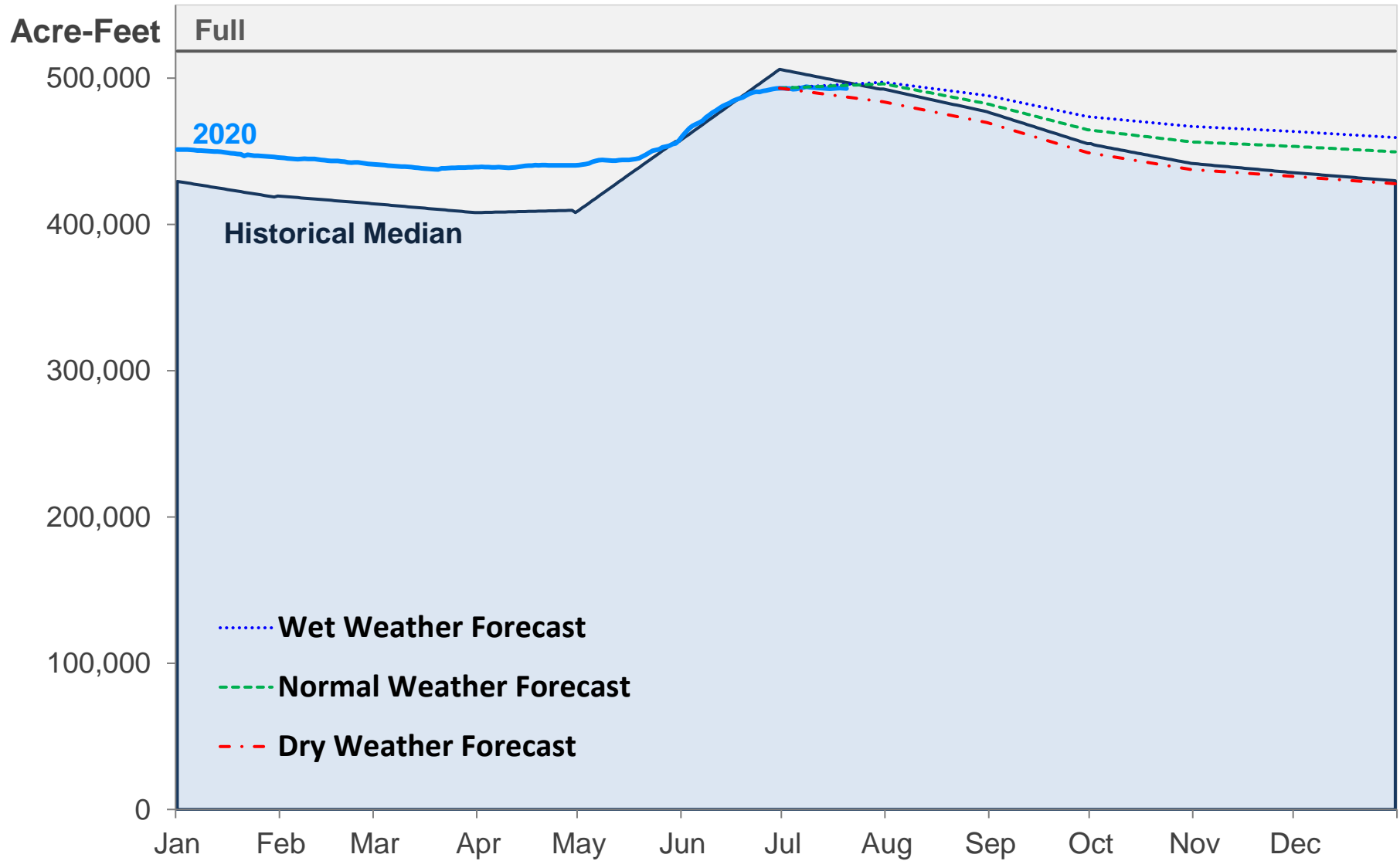
Reservoir	Capacity		Current Usable Contents (acre-feet)	Percent Full		
	(acre-feet)			Last Year	Historical Median	
	Total	Usable	Current			
Antero	19,881	19,826	19,825	100%	100%	100%
Eleven Mile	97,779	97,779	99,727	102%	103%	103%
Cheesman	79,064	79,064	71,965	91%	100%	99%
Marston	19,256	13,133	5,976	45%	83%	76%
Strontia Springs	7,863	7,163	6,328	88%	87%	95%
Chatfield	27,076	10,782	5,529	51%	94%	77%
Dillon	257,304	249,095	246,796	99%	102%	100%
Gross	41,811	29,811	28,798	97%	100%	96%
Ralston	10,776	7,276	5,300	73%	98%	92%
Meadow Creek	5,370	4,520	2,298	51%	96%	89%
Total	566,180	518,449	492,541	95%	101%	96%

Daily Use



July 20, 2020

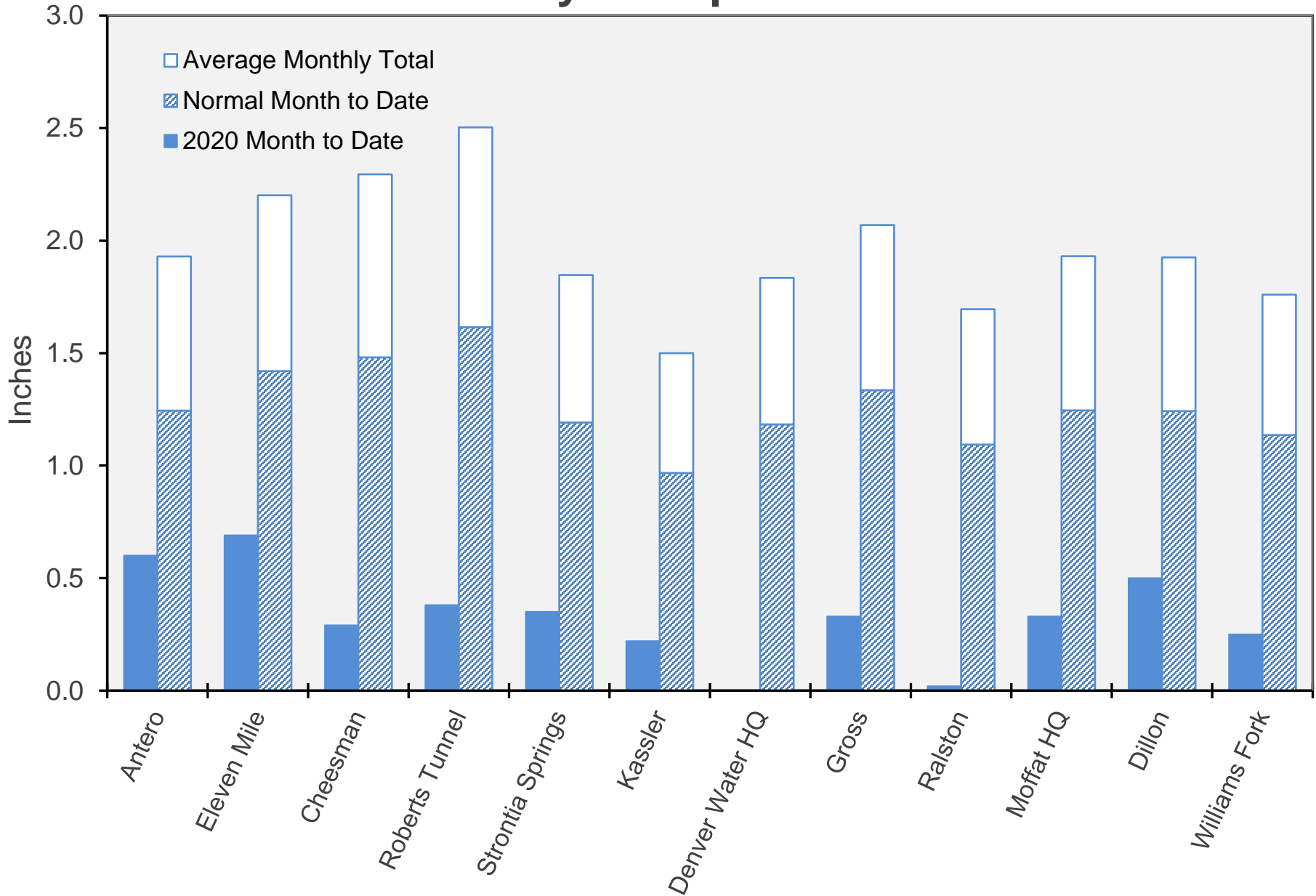
Supply Reservoir Contents



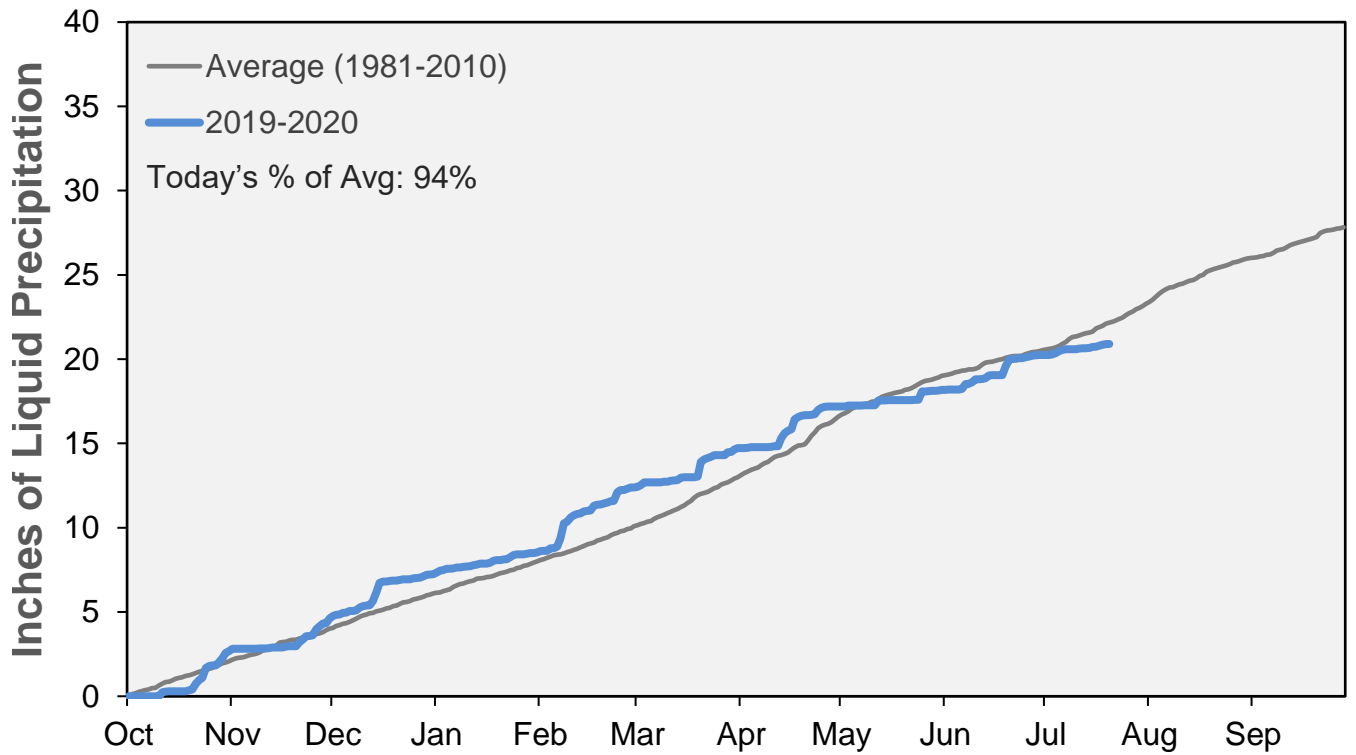
Note: Denver Water forecasts seasonal reservoir storage contents under dry future weather, normal future weather and wet future weather scenarios.

July 20, 2020

July Precipitation

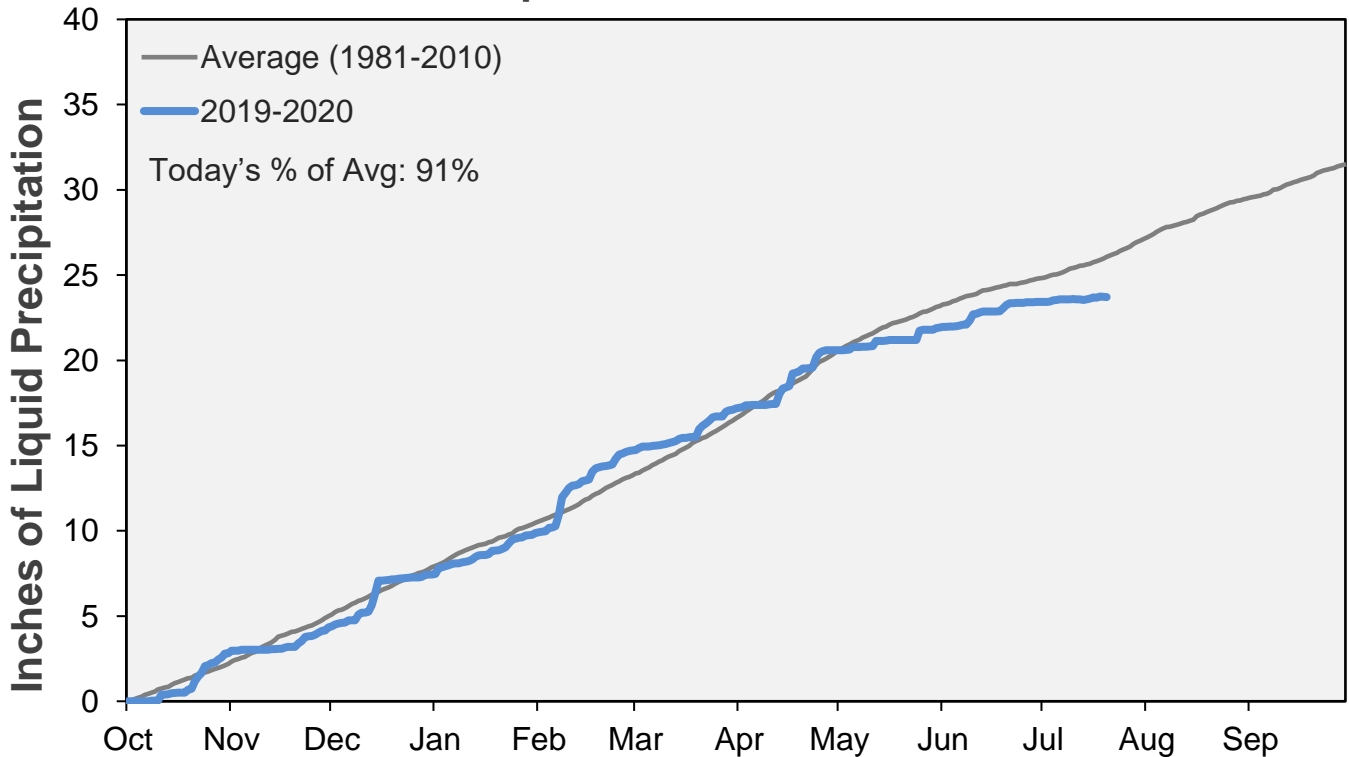


Cumulative Precipitation: South Platte River Watershed



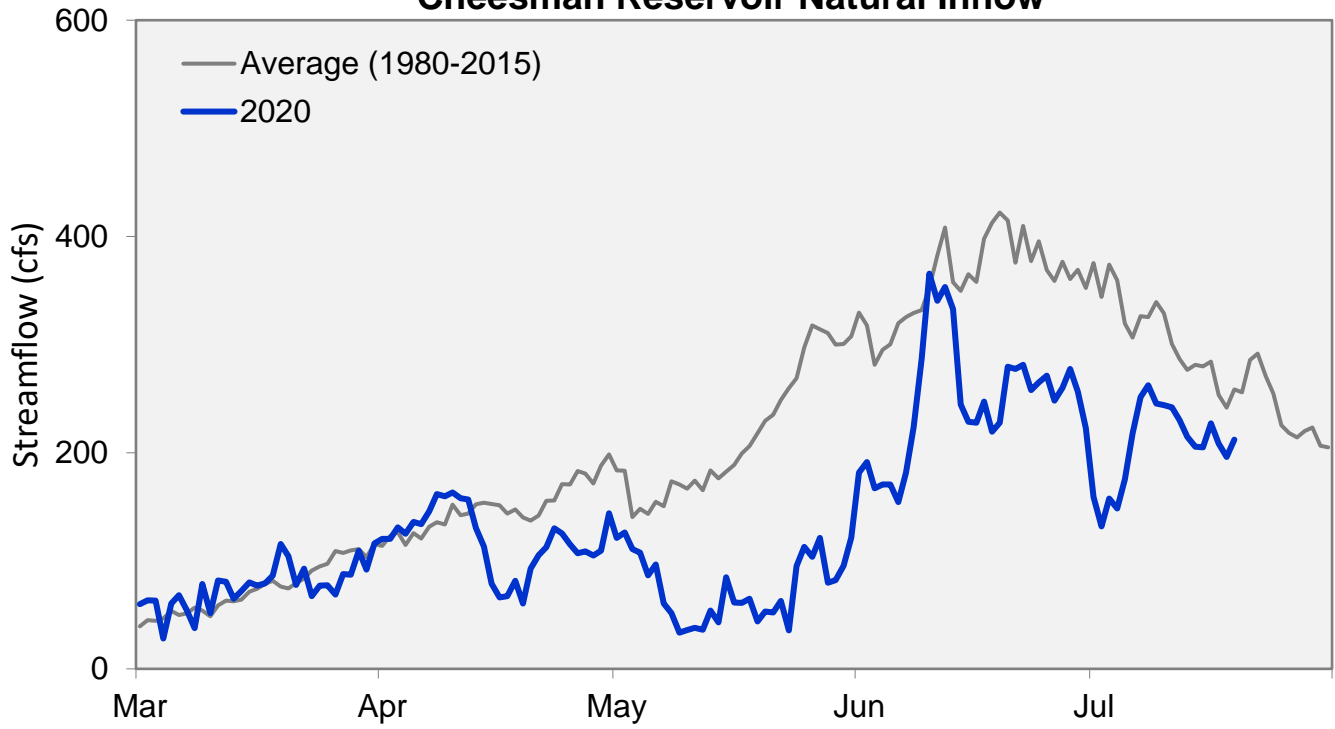
Data are from the 7 SNOTEL stations above Denver Water's Upper South Platte diversion facilities.

Cumulative Precipitation: Colorado River Watershed

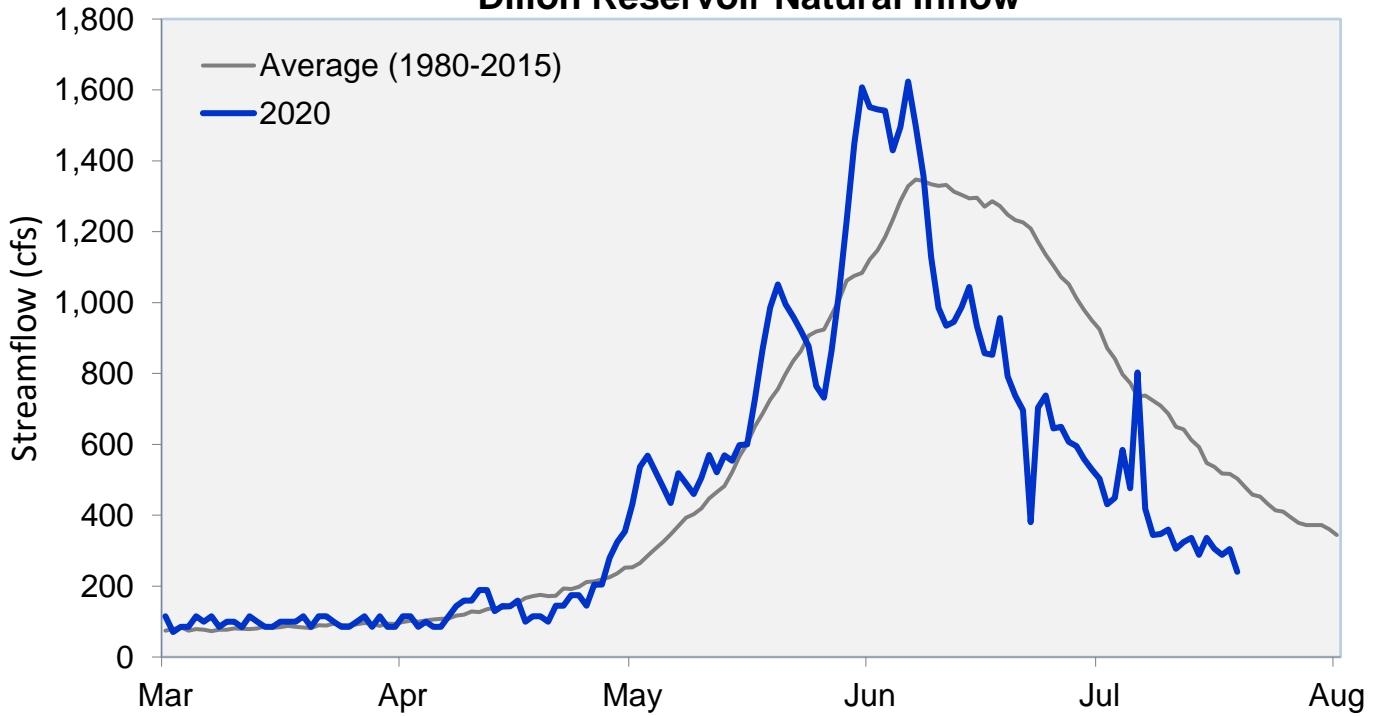


Data are from the 7 SNOTEL stations above Denver Water's Upper Colorado diversion facilities.

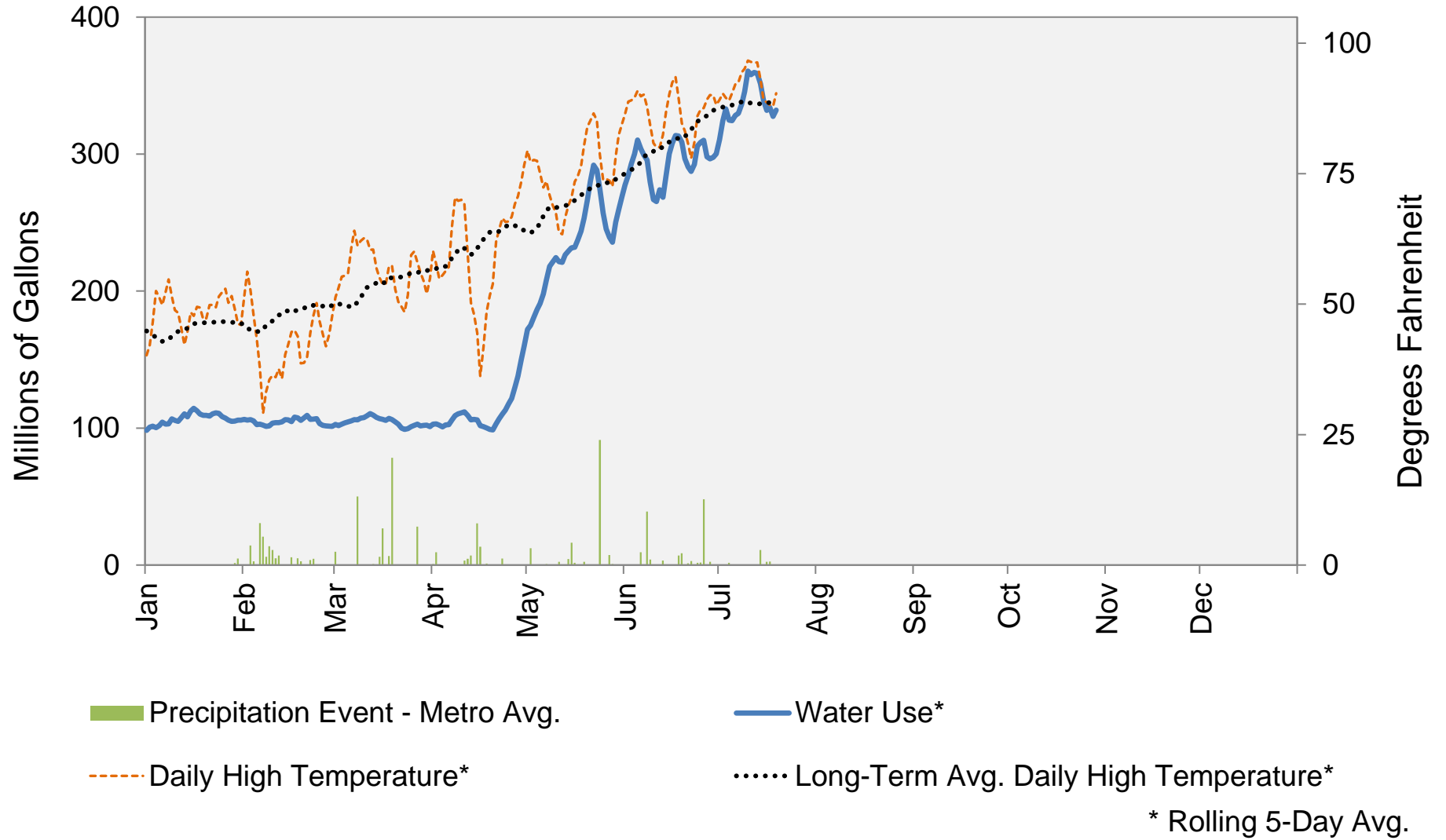
Cheesman Reservoir Natural Inflow



Dillon Reservoir Natural Inflow



2020 Water Use and Weather Conditions



July 20, 2020

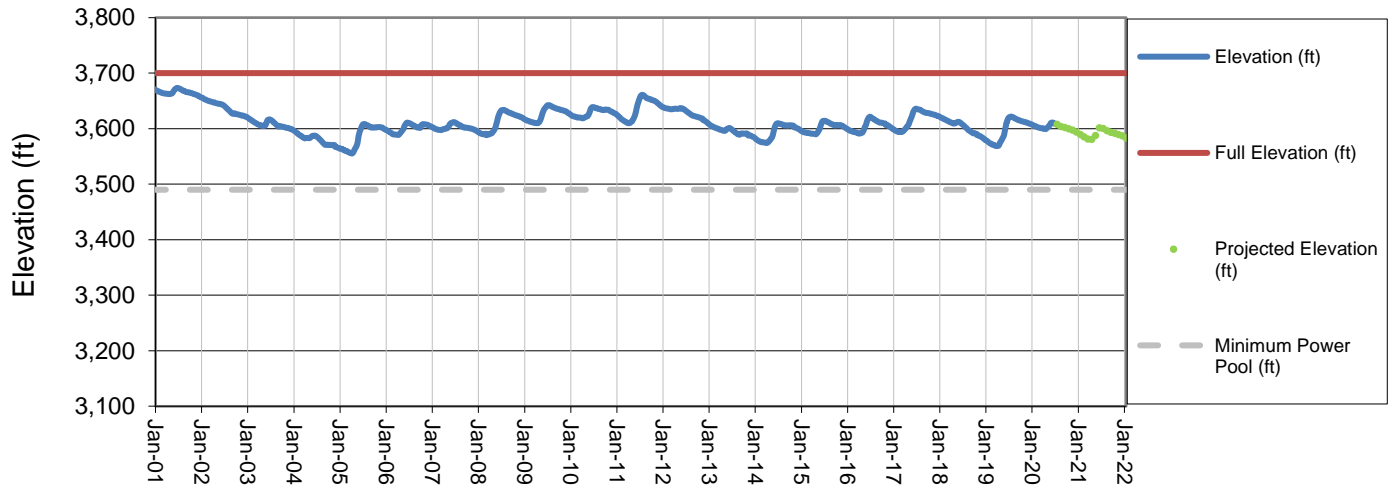
Denver Water Use and Reservoir Contents 2020

	Jan	Feb	Mar	Apr	May	Jun	Jul	Aug	Sep	Oct	Nov	Dec	YTD-Avg
Predicted End-of-Month Supply Reservoir Contents (Full = 518,449 AF)													
Actual End-of-Month Supply Reservoir Contents (AF)	445,828	441,137	439,113	440,306	457,594	493,141	496,100						
Actual % Full	86%	85%	85%	85%	88%	95%	96%						
Historical Median % Full	81%	80%	79%	79%	88%	98%							
2020 Expected Daily Use (MG)	110	109	108	127	172	272	298	282	248	150	109	105	164
Actual Daily Use (MG)	1	97	106	103	109	194	316	343					
	2	106	104	102	97	170	293	333					
	3	103	107	106	100	184	324	341					
	4	102	102	106	98	204	294	299					
	5	99	94	107	106	203	324	306					
	6	110	108	106	110	229	285	363					
	7	99	101	106	114	220	270	341					
	8	105	101	105	117	234	305	374					
	9	121	104	112	104	219	214	346					
D	10	94	104	109	110	220	260	380					
A	11	106	109	112	115	214	277	350					
Y	12	112	102	114	100	218	313	348					
	13	119	104	99	101	262	278	370					
O	14	111	111	104	106	233	291	308					
F	15	114	104	104	108	231	342	320					
	16	117	103	110	94	216	315	313					
M	17	102	117	110	96	245	342	360					
O	18	107	102	107	96	294	277	337					
N	19	106	102	99	101	279	269	331					
T	20	114	113	96	106	297	281						
H	21	114	112	102	116	284	285						
	22	111	103	96	115	305	325						
	23	110	102	103	114	276	303						
	24	104	104	102	116	210	336						
	25	103	95	103	129	211	295						
	26	108	106	106	135	226	291						
	27	103	101	100	156	274	265						
	28	106	101	97	154	257	296						
	29	105	103	104	176	283	341						
	30	106		104	180	257	308						
	31	108		100	274								
Monthly Average	107	104	104	116	239	297	340						178
% of 2020 Expected Daily Use	97%	96%	97%	91%	139%	109%	114%						109%

Notes: 1) "AF" denotes acre-feet. "MG" denotes million gallons. 2) Expected Daily Use is based on historical use with normal weather conditions. 3) The predicted end-of-month supply reservoir contents figures assume normal weather after July 1, 2020. 4) The differences between predicted and actual end-of-month supply reservoir contents are the result of normal estimation error of daily use, supply, evaporation, carriage losses and raw water deliveries. 5) Predicted supply reservoir contents last updated on July 6, 2020. 6) Daily water figures are subject to change.

Lake Powell Report*

Lake Powell Elevation (2001-Current)



* Denver Water gets half of its water supply from the Colorado River and closely monitors conditions at Lake Powell and within the greater Colorado River Basin.