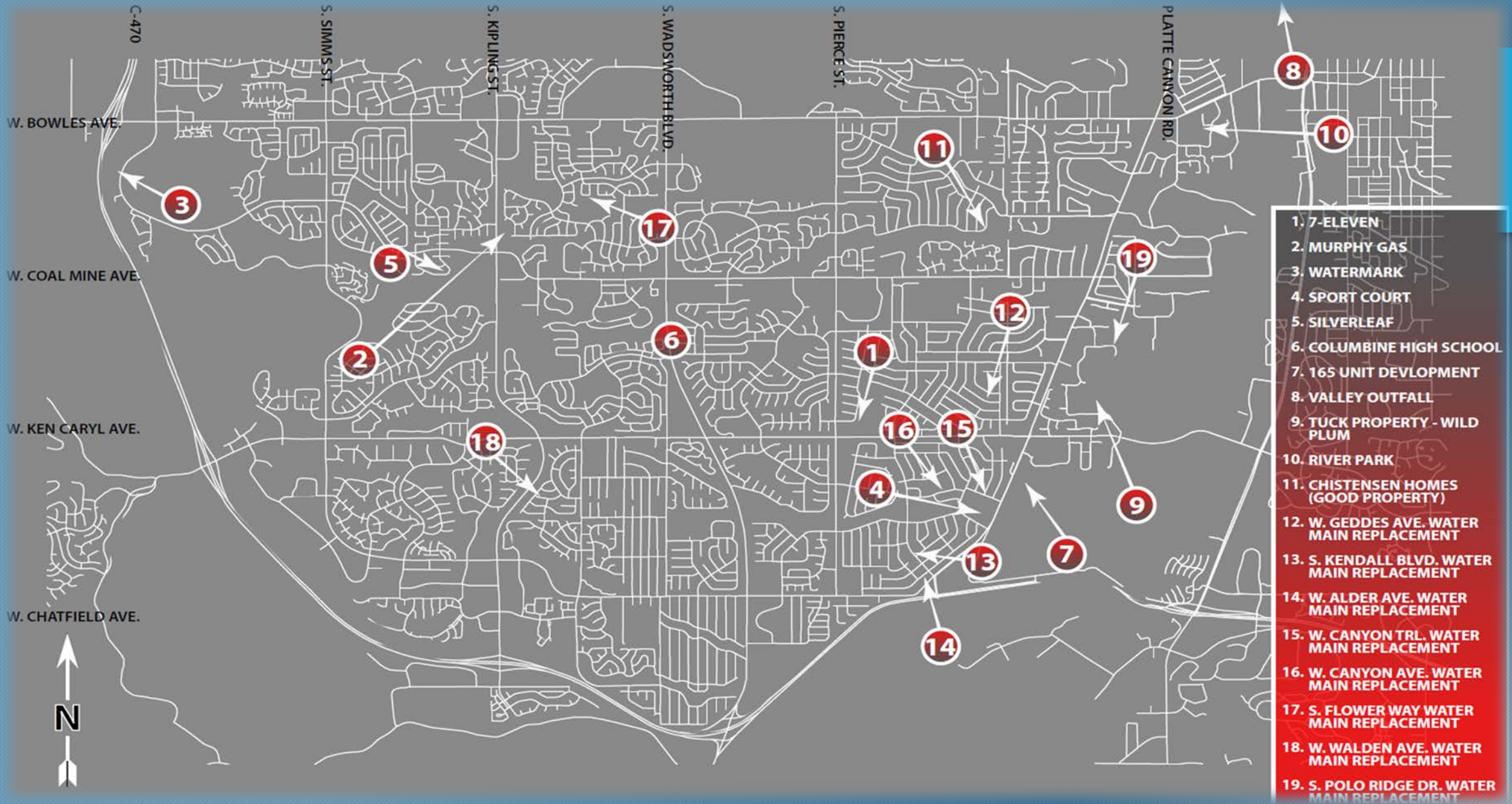


# PLAN REVIEW AND CONSTRUCTION STATUS REPORT – JULY - 2020



SUMMARY of projects in design or under construction

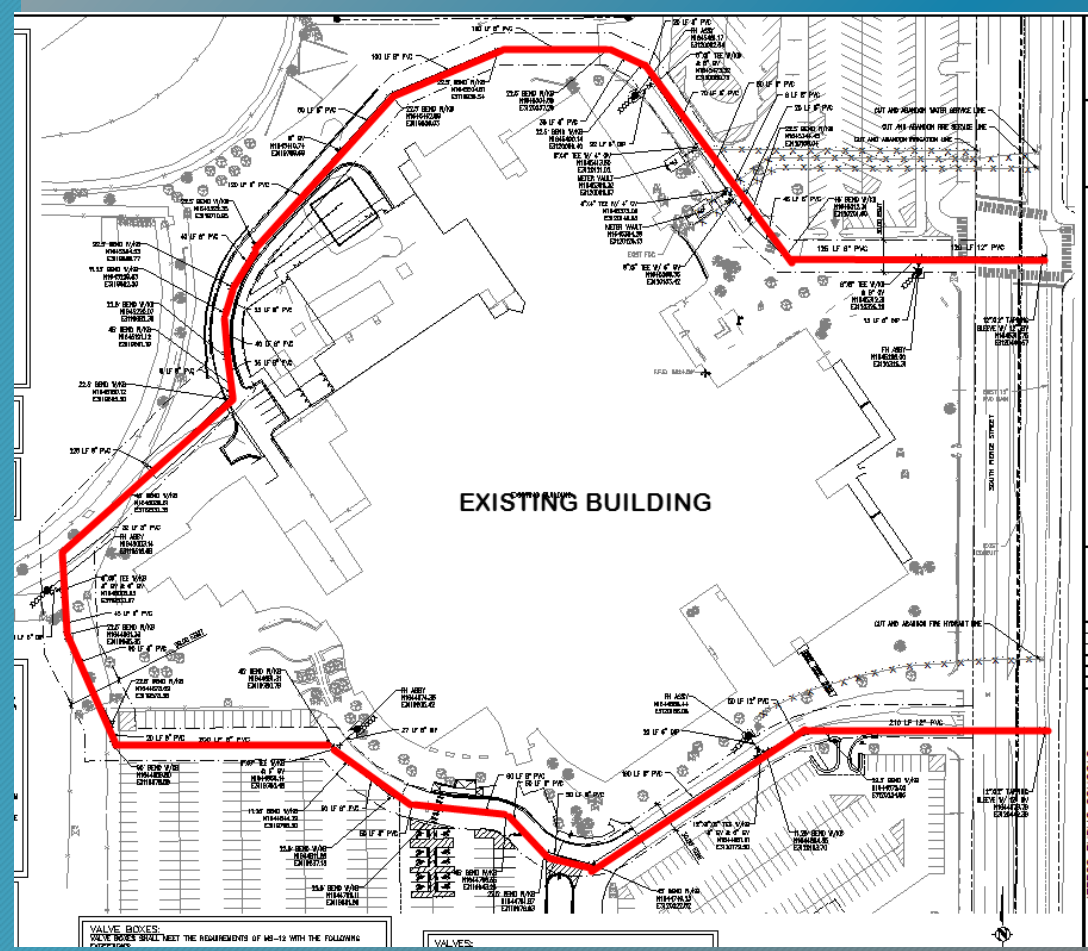


Overall Project Map

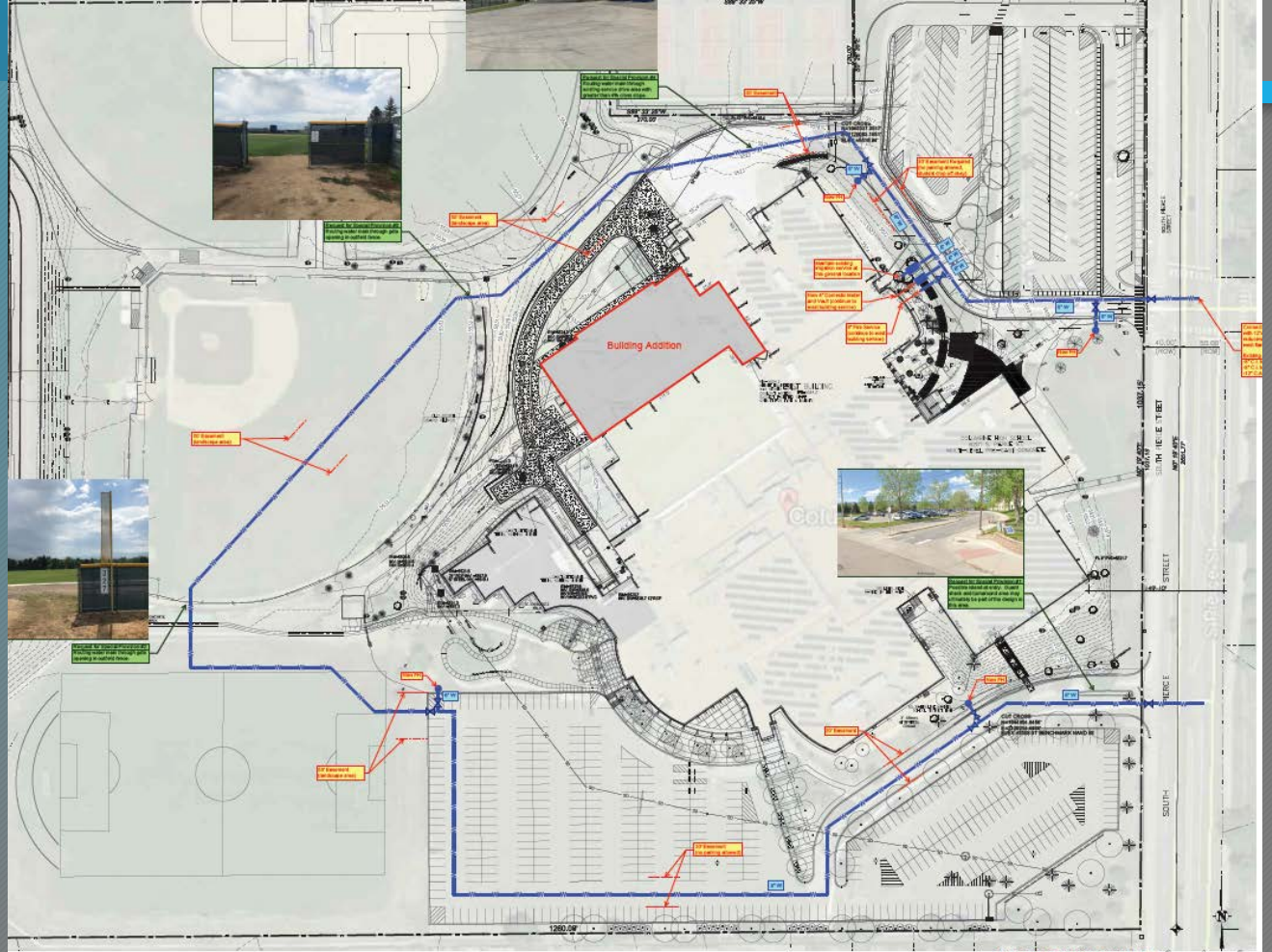


*NEW DEVELOPMENT PROJECTS IN DESIGN/PLAN REVIEW:*

- PROJECT NAME: Columbine High School
- LOCATION: Pierce and Bowles
- STATUS – Project in design, Annexation completed
- SCOPE: 2878' of 8' and 12" Water Main Extension



Proposed Water Pipe Configuration

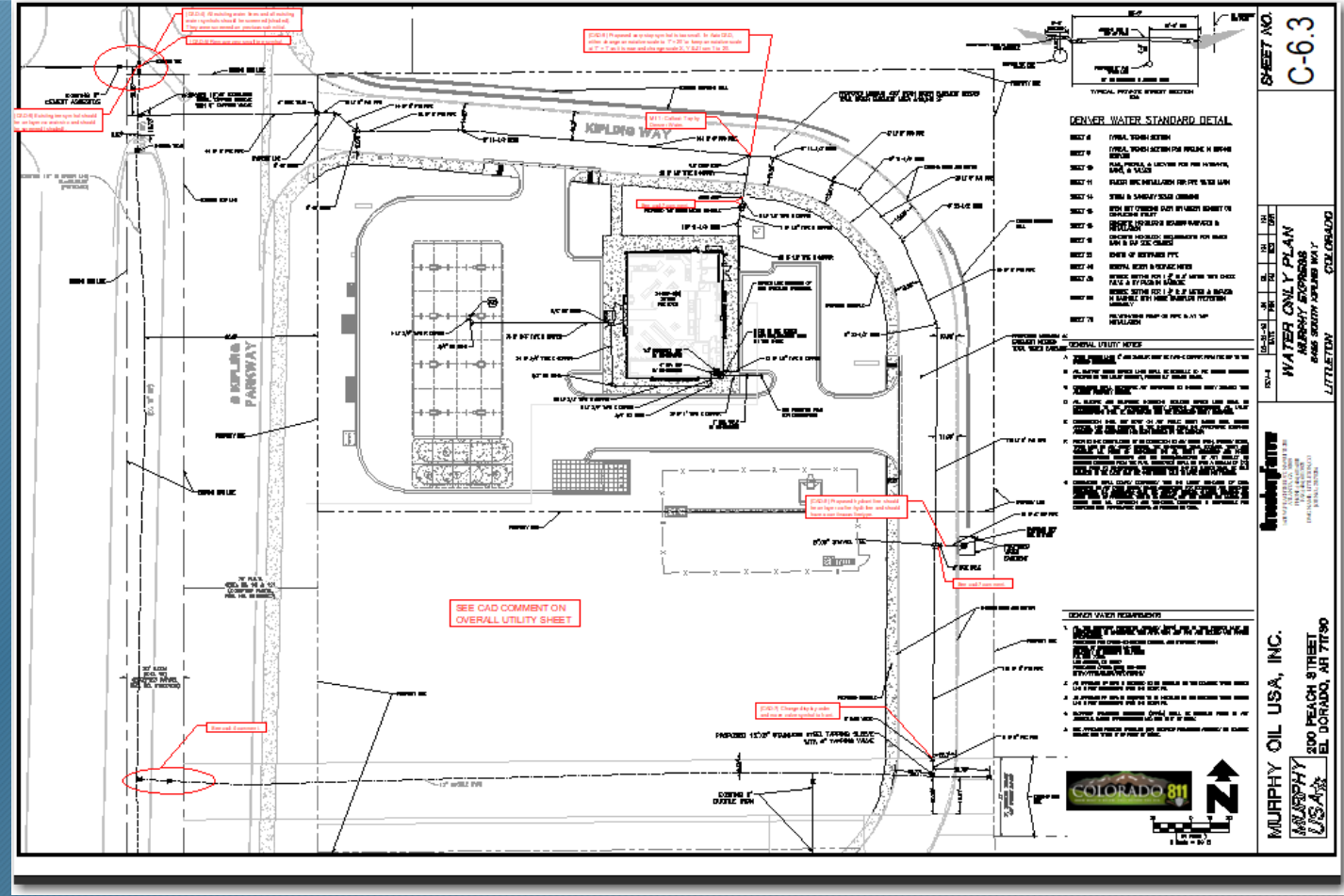


Original Water Pipe Configuration

- PROJECT NAME: Murphy Express – Gas Station
- LOCATION: S. Kipling St., 500' South of W. Coal Mine Ave.
- STATUS: In Plan Review, Murphy Oil will now lease the site which changes the easement and warranty documents
- SCOPE: 732' of 8" PVC Pipe

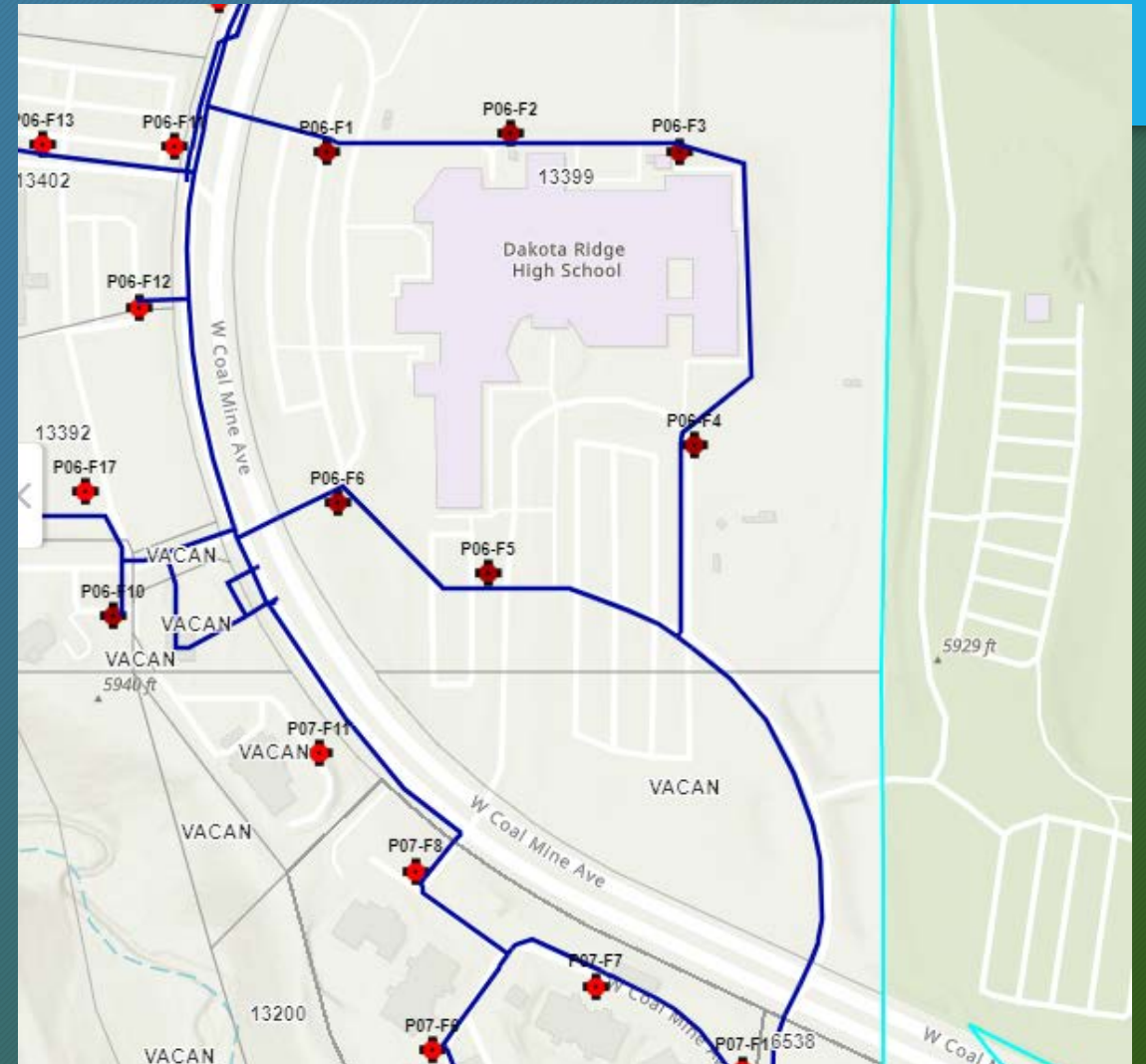
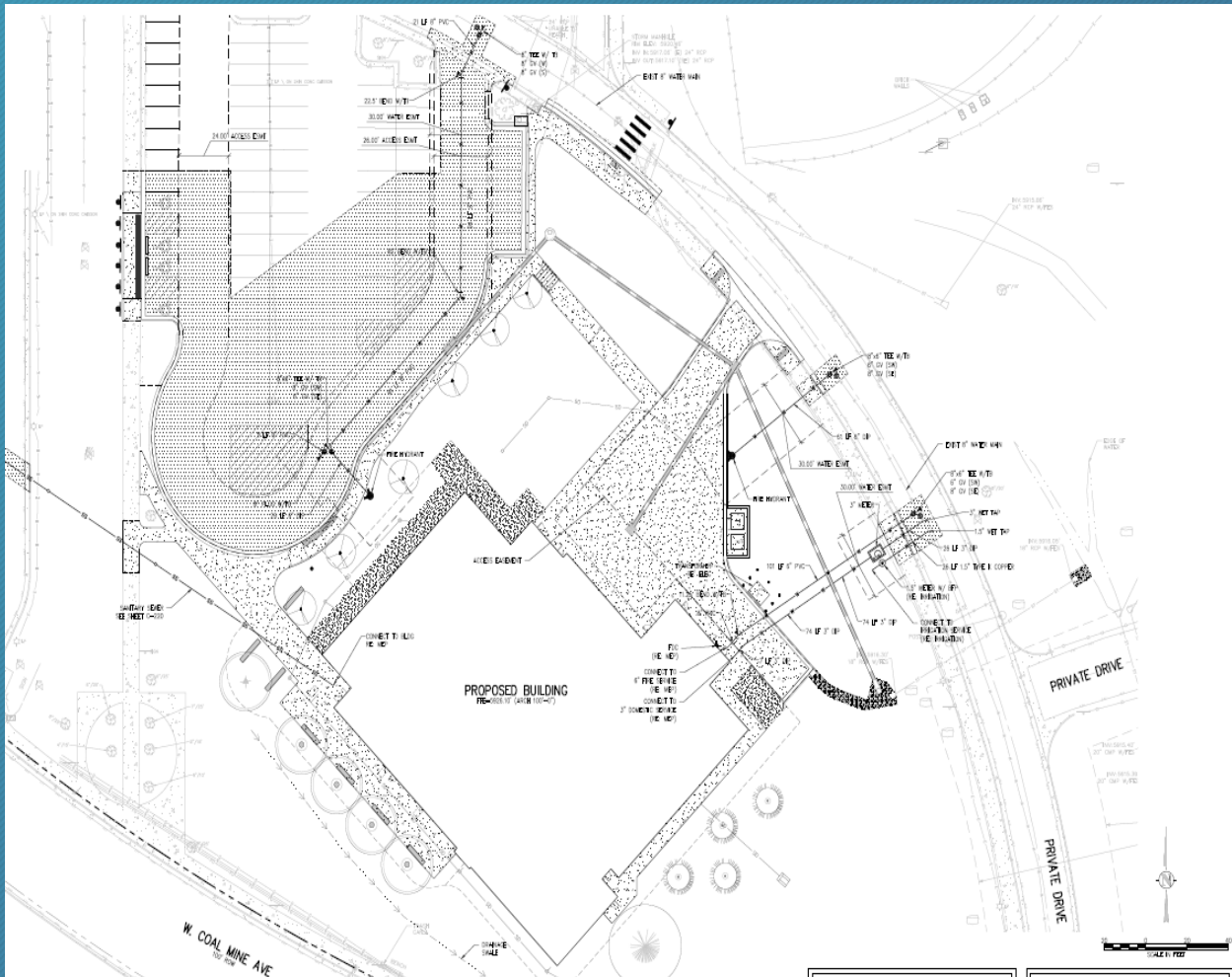


PROJECT LOCATION



PROJECT PLAN

- LOCATION: Coal Mine and Bowles
- PROJECT NAME: Dakota Ridge Warren Tech
- STATUS: In Design – Staff and District engineer review
- SCOPE: Water main installation

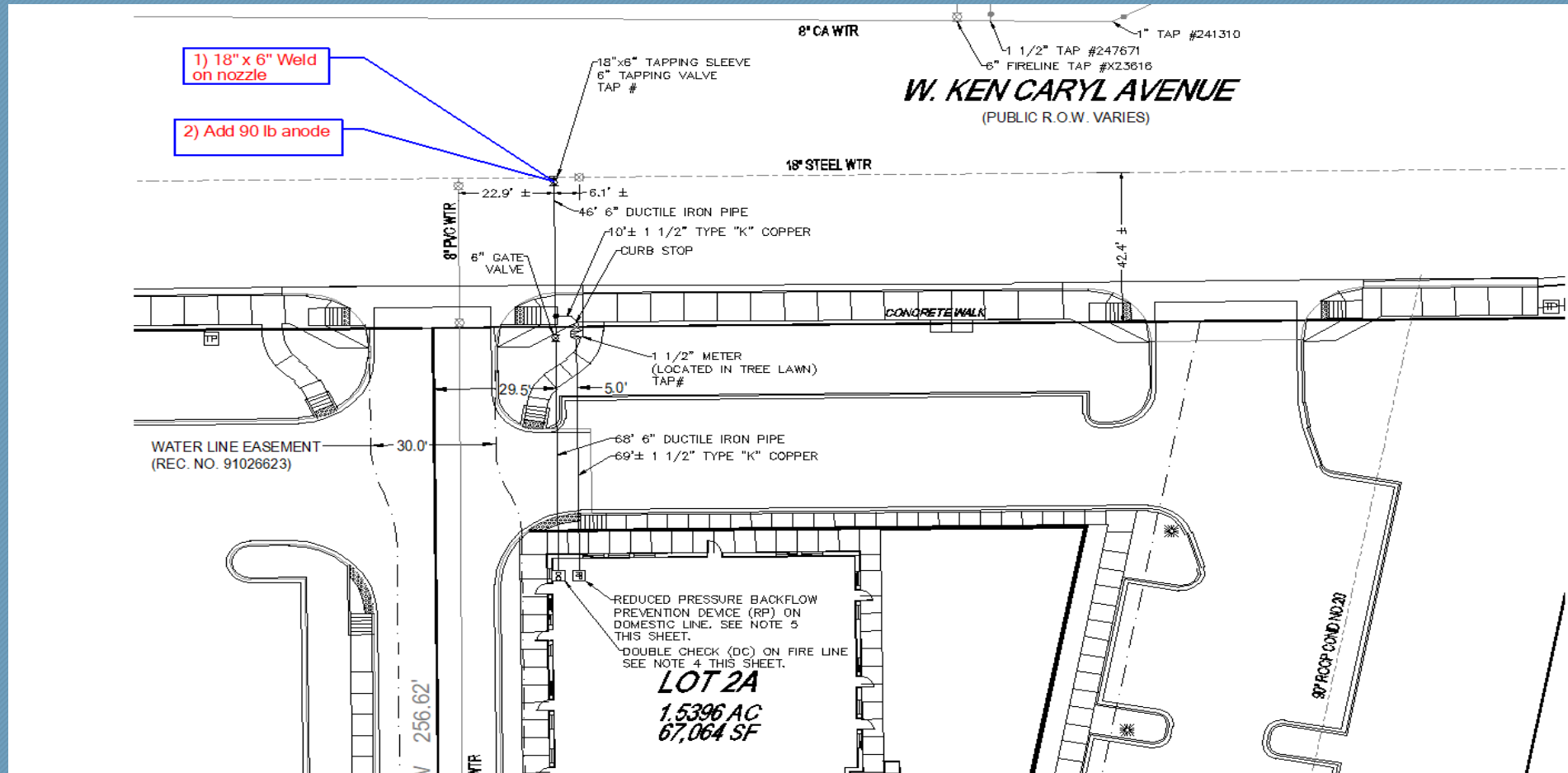


Project Plan



*THE FOLLOWING ARE DEVELOPMENT PROJECTS IN  
VARIOUS STAGES OF CONSTRUCTION*

- LOCATION: Northeast Corner of Pierce and Ken Caryl
- PROJECT NAME: Kiddie Academy
- STATUS: Fireline connection on 18" steel main pending; Excavation for building has begun
- SCOPE: Daycare – New Fireline

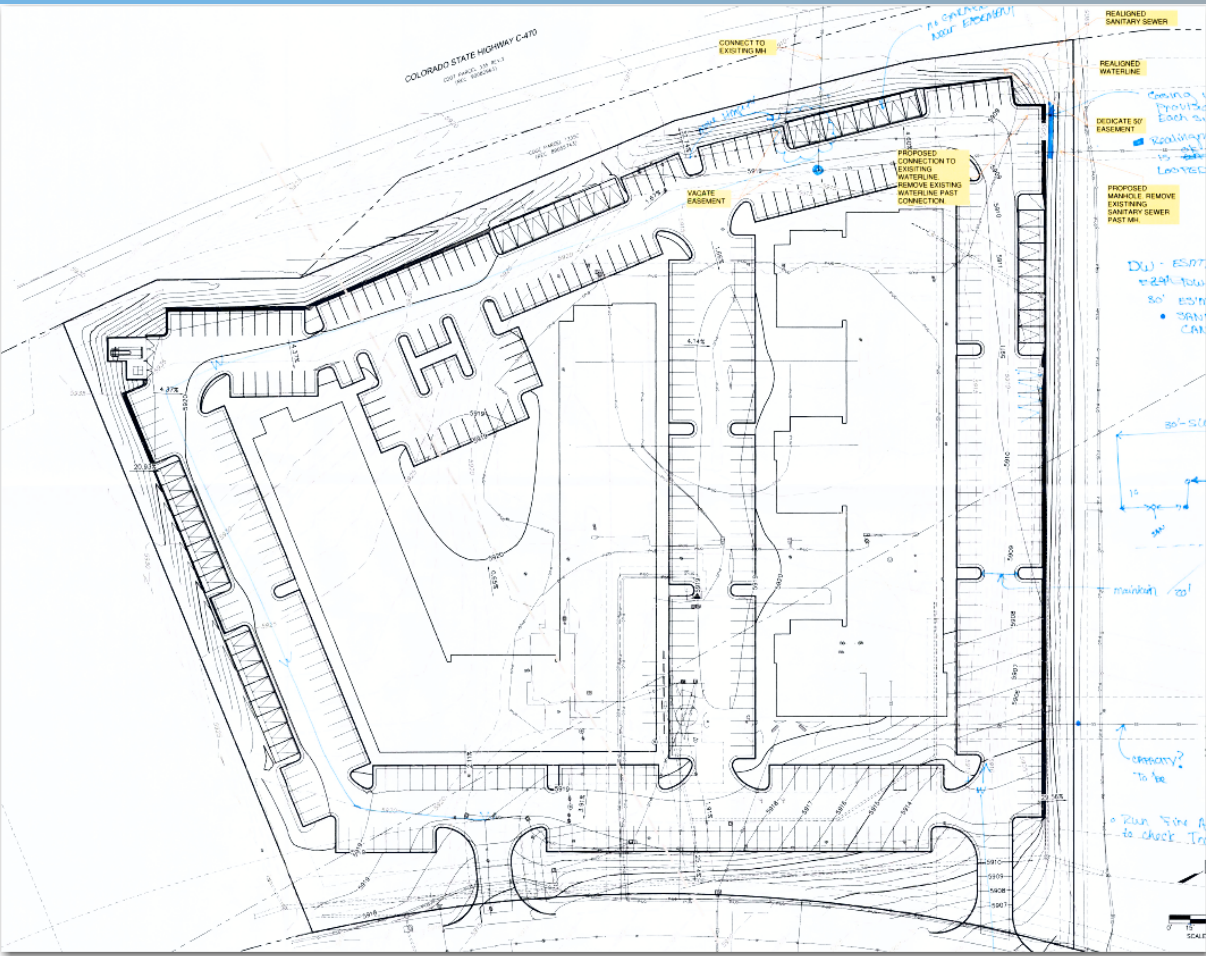


Project Plan



*CONCEPTUAL PROJECTS; RECENT ACTIVITY:*

- **PROJECT NAME:** 244 Unit Apartment Site
- **LOCATION:** West Side of Coal Mine, South of Bowles (Sonic Automotive Site)
- **STATUS:** Preliminary Design – Recent meeting with Denver Water regarding pipe size and looping
- **SCOPE:** Multi Family Development - 241 Units
- **ANTICIPATED TAP REVENUE:** sewer - \$365,838 & water (size TBD) - \$112,000



PROJECT PLAN



PROJECT LOCATION

**THE FOLLOWING ARE 2020 CAPITAL PROJECTS IN DESIGN**

## Valley Sewer Outfall Replacement/Relocation – Lift station construction pumping to force main around landfill

Status – In Construction – Prefabricated lift station placed – utilities to site

### ➤ Schedule:

- 8" Force Main Construction - complete
- Lift Station Delivery - complete
- Xcel (gas and elec) – set pole and transformer – July 20<sup>th</sup>, Gas install unknown
- Set electric meter – end of July – Gas meter unknown
- Test lift station 8/10 – 8/14



Setting Lift Station on Foundation



Suction Pipes from Wet Well



Backup Generator

➤ PC PROJECTS:-

- A. W. Geddes Ave. between S. Chase Ct. and S. Sheridan Ct. (CIP 20-1W)
- B. S. Kendall Blvd. between W. Monticello Ave. and W. Alder Ave. (CIP 20-2W)
- C. W. Alder Ave. between S. Kendall Blvd. and S. Jay Dr. (CIP 20-3W)
- D. W. Canyon Tr. between S. Depew St. and S. Sheridan Ct. (CIP 20-4W) *Start July*
- E. W. Canyon Ave. between W. Canyon Dr. and S. Depew St. (CIP 20-SW)

➤ SWM PROJECTS -

- A. S. Flower Way between W. Arbor Ave. and fire hydrant J06-F23 (CIP 20-1W) **Complete**
- B. W. Walden Ave. between S. Independence Way and S. Hoyt Ct. (CIP 20-2W) **Complete**
- C. Polo Ridge Dr. between Thoroughbred Run and end of the cul-de-sac (CIP 20-3W) **Complete**



Walden Ave 12" Water Trench



Flower Way 6" Water Trench



Polo Club 12" Water Trench

QUESTIONS?